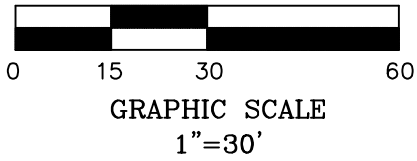


VICINITY MAP (NTS)



LEGEND

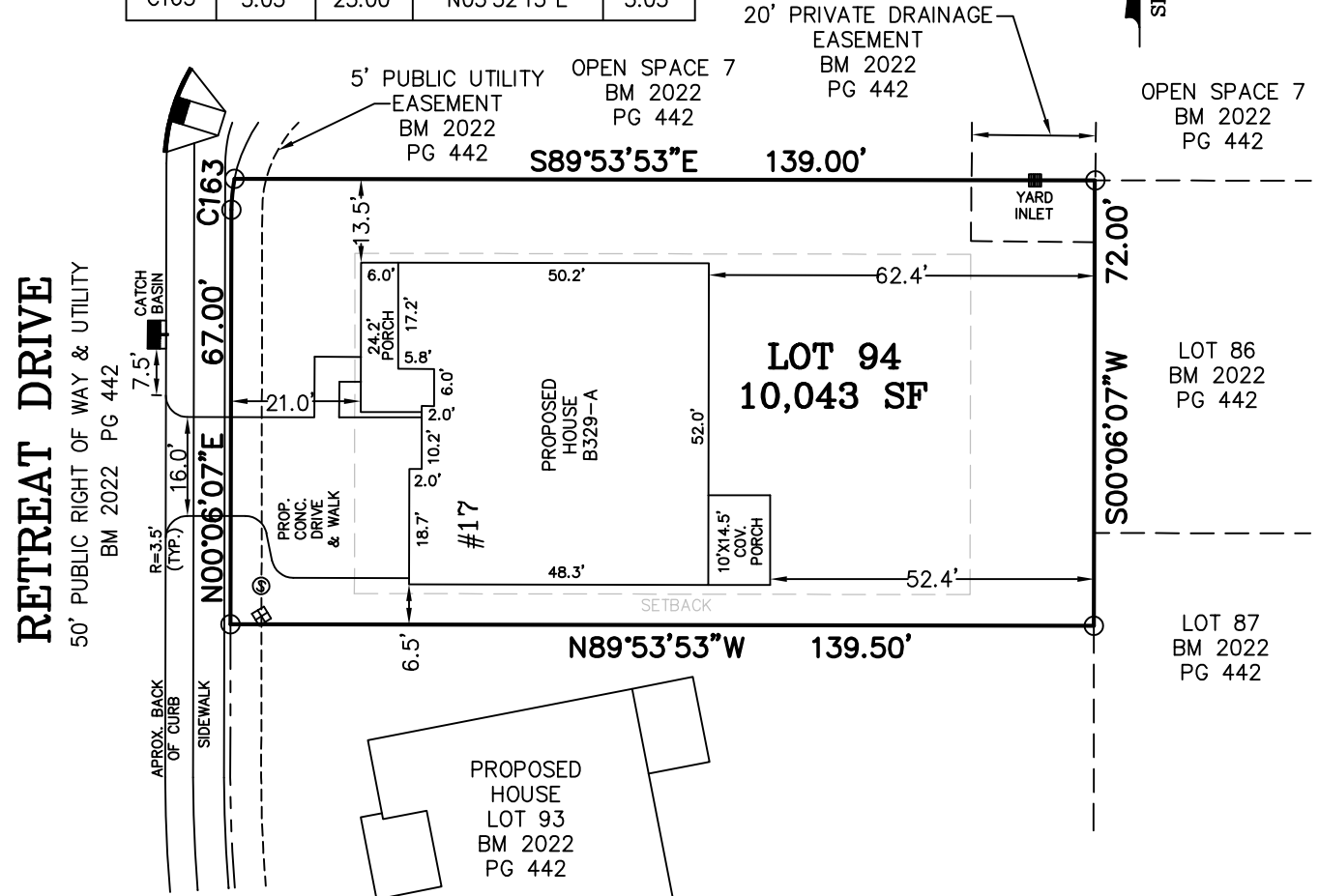
- MATHEMATICAL POINT
- CONTROL CORNER
- ▣ WATER METER
- ⊙ SEWER CLEAN OUT
- ⊗ FIRE HYDRANT

NOTE:
 THE TOTAL ESTIMATED IMPERVIOUS IS WITHIN 5 SF TO THE MAXIMUM ALLOWABLE IMPERVIOUS VALUE OF 3,600 SF. MSS LAND CONSULTANTS WILL NOT BE LIABLE FOR ANY OVERHANGS OR ERROR'S DUE TO THE CONSTRUCTION PROCESS.



CURVE TABLE

CURVE	LENGTH	RADIUS	CHORD BEARING	CHORD
C163	5.03'	25.00'	N05°52'13"E	5.03'



NOTES:
 -REFERENCE HARNETT CO. BM 2022, PG 434-448 FOR BOUNDARY INFORMATION, NORTH INDEX & TIE LINES TO SUBDIVISION CONTROL CORNERS.
 -ZONED: RA-30, RA-40, & CONSERVATION.
 -SETBACKS, PER BM 2022 PG 434:
 43' LOT WIDTH:
 FRONT YARD-20', SIDE YARD-4' & 4' OR 0' & 8', REAR YARD-20', CORNER YARD-12'.
 >43' LOT WIDTH:
 FRONT YARD-20', SIDE YARD-5', REAR YARD-20', CORNER YARD-12'.
 -PROPERTY IS NOT LOCATED WITHIN A SPECIAL FLOOD HAZARD AREA AS SCALED FROM THE NFIP FIRM No. 3720065500L (EFFECTIVE DATE: JULY 19, 2022).

MAXIMUM ALLOWABLE IMPERVIOUS-3,600 SF

TOTAL ESTIMATED IMPERVIOUS-3,595 SF	
SITE	SQ. FT.
HOUSE	2,684
DRIVEWAY	704
LEAD WALK	53
COV. PORCH	145
A/C PAD	9

PERMIT PLAN LOT: 94

SERENITY SUBDIVISION, PHASE 1
 HECTORS CREEK TOWNSHIP, HARNETT COUNTY, NC

SURVEYED FOR
DAVID WEEKLEY HOMES
 1901 N. HARRISON AVENUE, SUITE 200
 CARY, NC 27513



MSS LAND CONSULTANTS, PC
 "Committed to Total Quality Service"
 Firm License: C-2070
 E S T. 1 9 9 8

6118 St. Giles St Phone (919) 510-4464
 (Suite E) Fax (919) 510-9102
 Raleigh, NC 27612 Email: gowersw@mssland.com

I HEREBY CERTIFY THAT THE BUILDING WILL LIE WHOLLY ON THE LOT. THIS PLAT IS OF AN EXISTING PARCEL OF LAND. THIS IS NOT A SURVEY AND NOT FOR RECORDATION PURPOSES.

PRELIMINARY PLAN

WADE A. GOWERS, PLS L-4639

O:_DWHOMES\IDWH-22-02.dwg 04.dwg, Layout1, 11/8/2023 10:30:52 AM, cravwforde, 1:1