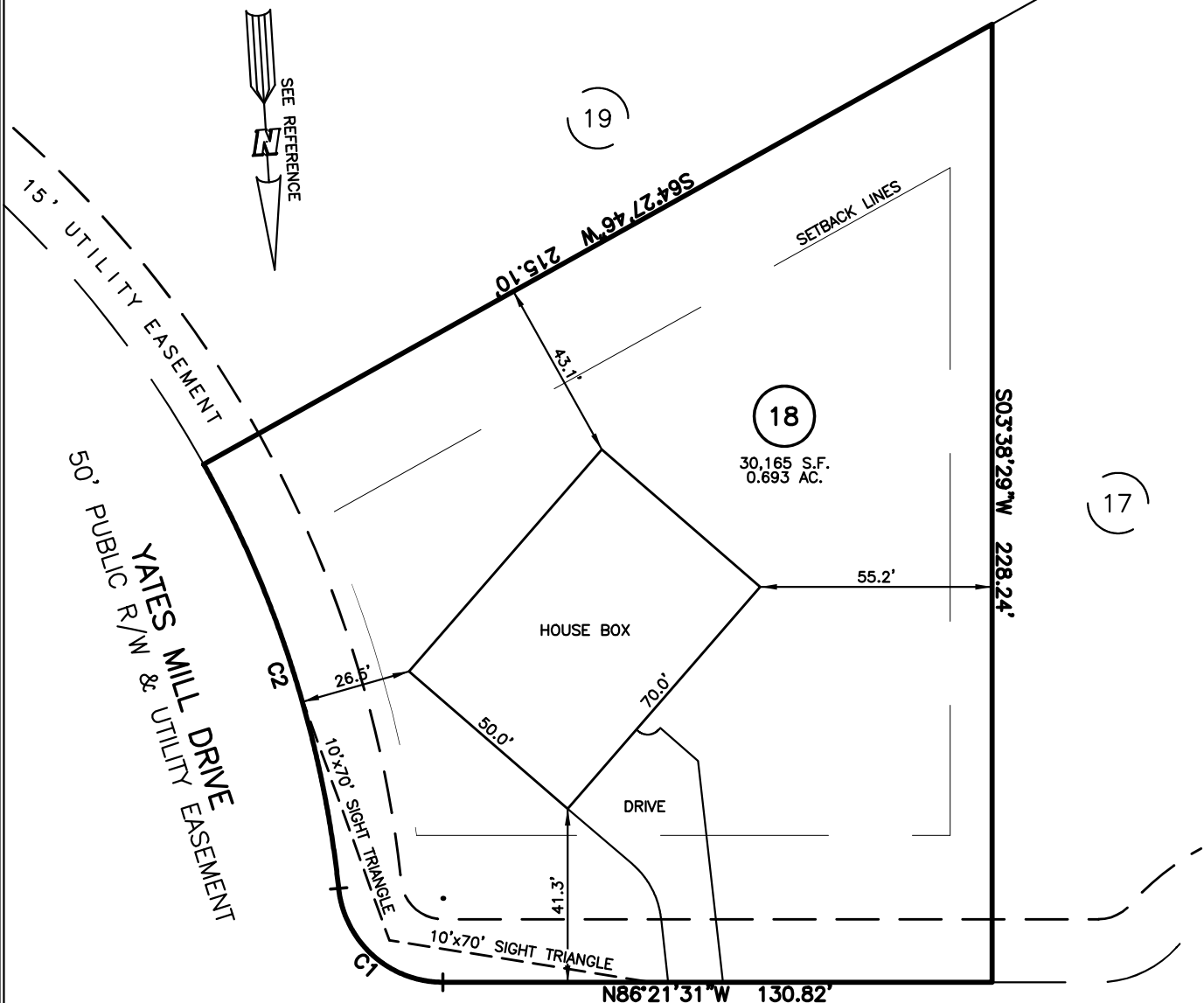


NEW HOME INC., LLC  
 AVENTS CREEK WAY  
 LOT 18, WOODBRIDGE SOUTH  
 BUCKHORN TOWNSHIP, HARNETT COUNTY, NORTH CAROLINA



REFERENCES:  
 P.B. 2023, PGS 92-94

AVENTS CREEK WAY  
 50' PUBLIC R/W & UTILITY EASEMENT

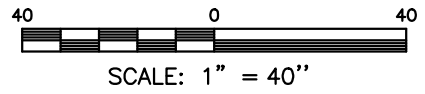
**LEGEND**

- |  |  |
|--|--|
| <ul style="list-style-type: none"> <li>△ AIR CONDITIONER</li> <li>BC BACK of CURB</li> <li>BFP BACK FLOW PREVENTER</li> <li>○ CLEANOUT</li> <li>■ CURB INLET</li> <li>DHS DRILL HOLE SET</li> <li>ECM EXISTING CONCRETE MONUMENT</li> <li>EDH EXISTING DRILL HOLE</li> <li>EIS EXISTING IRON STAKE</li> <li>EIP EXISTING IRON PIPE</li> <li>EM ELECTRIC METER</li> <li>EPK EXISTING PK NAIL</li> <li>ES ELECTRIC STUB</li> <li>FLR FLARED END SECTION</li> <li>FH FIRE HYDRANT</li> <li>FOP FIBER OPTIC PEDESTAL</li> <li>GM GAS METER</li> <li>GUY</li> </ul> | <ul style="list-style-type: none"> <li>INV. INVERT</li> <li>IPS IRON PIPE SET</li> <li>IRS IRON ROD SET</li> <li>○ LIGHT POLE</li> <li>MNS MAGNETIC NAIL SET</li> <li>○ MANHOLE SANITARY SEWER</li> <li>○ MANHOLE STORM SEWER</li> <li>OHV OVERHEAD WIRES</li> <li>PKS PK NAIL SET</li> <li>PNS POINT NOT SET</li> <li>RRS RAIL ROAD SPIKE</li> <li>RRS TELEPHONE PEDESTAL</li> <li>TRANSFORMER</li> <li>CABLE TV PEDESTAL</li> <li>UTILITY POLE</li> <li>WATER METER</li> <li>WATER VALVE</li> <li>YARD INLET</li> <li>( ) FIELD MEASUREMENT</li> </ul> |
|--|--|

| NUM | RADIUS  | ARC     | DELTA     | CHORD BRG   | CHORD   |
|-----|---------|---------|-----------|-------------|---------|
| C1  | 25.00'  | 36.61'  | 83°53'52" | S44°24'35"E | 33.42'  |
| C2  | 265.00' | 106.73' | 23°04'35" | S13°59'56"E | 106.01' |

**SETBACK INFO**

- FRONT: \_\_\_\_\_ 35'
- REAR: \_\_\_\_\_ 25'
- SIDES: \_\_\_\_\_ 10'
- CORNER SIDE: \_\_\_\_\_ 20'



FOR REPRESENTATIVE PURPOSES ONLY  
 NOT FOR PERMITTING, RECORDATION,  
 CONVEYANCE OR SALES

**NOTES**

1. THIS SURVEY SUBJECT TO ANY FACTS THAT MAY BE DISCLOSED BY A FULL AND ACCURATE TITLE SEARCH.
2. THIS MAP MAY NOT BE A CERTIFIED SURVEY AND HAS NOT BEEN REVIEWED BY A LOCAL GOVERNMENT AGENCY FOR COMPLIANCE WITH ANY APPLICABLE LAND DEVELOPMENT REGULATIONS AND HAS NOT BEEN REVIEWED FOR COMPLIANCE WITH RECORDING REQUIREMENTS FOR PLATS.

HOUSE FIT  
 ONLY

DATE: DEC. 06, 2023

F.B. \_\_\_\_\_

**RWK, PA**  
**ENGINEERING ~ SURVEYING**  
 CORPORATE LICENSE: C-1771  
 101 W. MAIN ST., SUITE 202  
 GARNER, NC 27529  
 PHONE (919) 779-4854  
 FAX (919) 779-4056