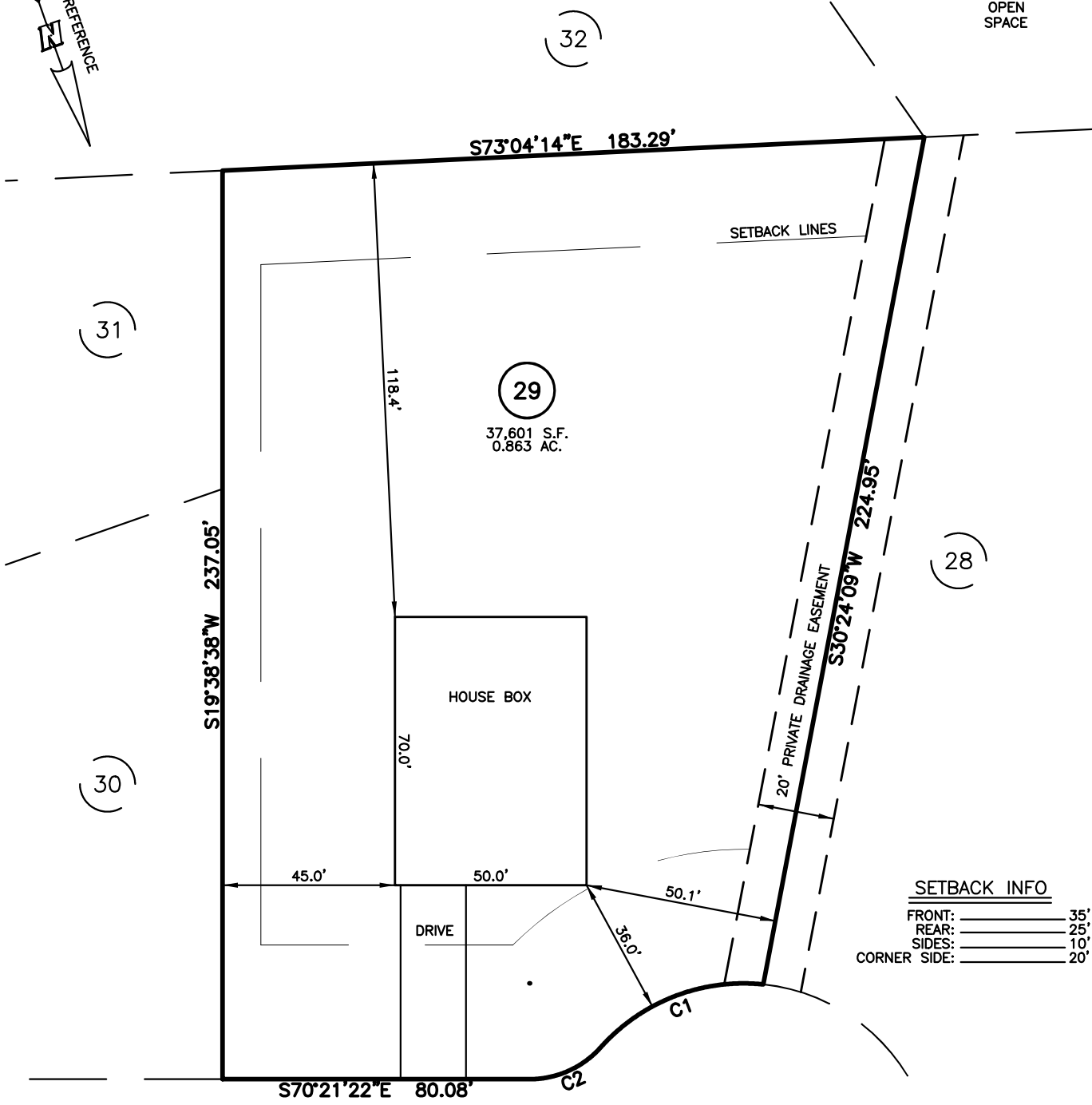
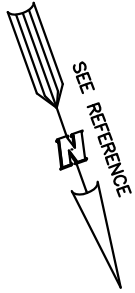


NEW HOME INC., LLC  
 217 SALEM VILLAGE DRIVE  
 LOT 29, WOODBRIDGE SOUTH  
 BUCKHORN TOWNSHIP, HARNETT COUNTY, NORTH CAROLINA



**SETBACK INFO**

FRONT:	35'
REAR:	25'
SIDES:	10'
CORNER SIDE:	20'

**LEGEND**

- |   |  |
|---|--|
| <ul style="list-style-type: none"> <li>▲ AIR CONDITIONER</li> <li>BC BACK OF CURB</li> <li>BFP BACK FLOW PREVENTER</li> <li>○ CLEANOUT</li> <li>■ CURB INLET</li> <li>DHS DRILL HOLE SET</li> <li>ECM EXISTING CONCRETE MONUMENT</li> <li>EDH EXISTING DRILL HOLE</li> <li>EIS EXISTING IRON STAKE</li> <li>EIP EXISTING IRON PIPE</li> <li>EM ELECTRIC METER</li> <li>EPK EXISTING PK NAIL</li> <li>ES ELECTRIC STUB</li> <li>▽ FLARED END SECTION</li> <li>⊕ FIRE HYDRANT</li> <li>⊙ FIBER OPTIC PEDESTAL</li> <li>GM GAS METER</li> <li>→ GUY</li> </ul> | <ul style="list-style-type: none"> <li>INV. INVERT</li> <li>IPS IRON PIPE SET</li> <li>IRS IRON ROD SET</li> <li>□ LIGHT POLE</li> <li>MNS MAGNETIC NAIL SET</li> <li>⊕ MANHOLE SANITARY SEWER</li> <li>⊕ MANHOLE STORM SEWER</li> <li>OHV OVERHEAD WIRES</li> <li>PKS PK NAIL SET</li> <li>PNS POINT NOT SET</li> <li>RRS RAIL ROAD SPIKE</li> <li>⊕ TELEPHONE PEDESTAL</li> <li>⊕ TRANSFORMER</li> <li>⊕ CABLE TV PEDESTAL</li> <li>⊕ UTILITY POLE</li> <li>⊕ WATER METER</li> <li>⊕ WATER VALVE</li> <li>⊕ YARD INLET</li> <li>( ) FIELD MEASUREMENT</li> </ul> |
|---|--|

NUM	RADIUS	ARC	DELTA	CHORD BRG	CHORD
C1	50.00'	47.18'	54°03'57"	N88°29'13"E	45.45'
C2	25.00'	21.03'	48°11'23"	S85°32'56"W	20.41'

**REFERENCES:**

P.B. 2023, PGS 92-94



SCALE: 1" = 40'

**NOTES**

1. THIS SURVEY SUBJECT TO ANY FACTS THAT MAY BE DISCLOSED BY A FULL AND ACCURATE TITLE SEARCH.
2. THIS MAP MAY NOT BE A CERTIFIED SURVEY AND HAS NOT BEEN REVIEWED BY A LOCAL GOVERNMENT AGENCY FOR COMPLIANCE WITH ANY APPLICABLE LAND DEVELOPMENT REGULATIONS AND HAS NOT BEEN REVIEWED FOR COMPLIANCE WITH RECORDING REQUIREMENTS FOR PLATS.

FOR REPRESENTATIVE PURPOSES ONLY  
 NOT FOR PERMITTING, RECORDATION,  
 CONVEYANCE OR SALES

HOUSE FIT  
 ONLY

DATE: DEC. 06, 2023

Q:\FieldLoc

**RWK, PA**  
**ENGINEERING ~ SURVEYING**  
 CORPORATE LICENSE: C-1771  
 101 W. MAIN ST., SUITE 202  
 GARNER, NC 27529  
 PHONE (919) 779-4854  
 FAX (919) 779-4056