

**Plumbing Drop Notes**  
 1. Plumbing drop locations shown are NOT exact.  
 2. Contractor to verify ALL plumbing drop locations prior to setting Floor Trusses.  
 3. Adjust spacing as needed not to exceed 19.2"oc.

**Dimension Notes**  
 1. All exterior wall to wall dimensions are to face of sheathing unless noted otherwise.  
 2. All interior wall dimensions are to face of stud unless noted otherwise.  
 3. All exterior wall to truss dimensions are to face of stud unless noted otherwise.

All Walls Shown Are Considered Load Bearing

= Indicates Left End of Truss ▲ (Reference Engineered Truss Drawing)  
 Do Not Erect Trusses Backwards

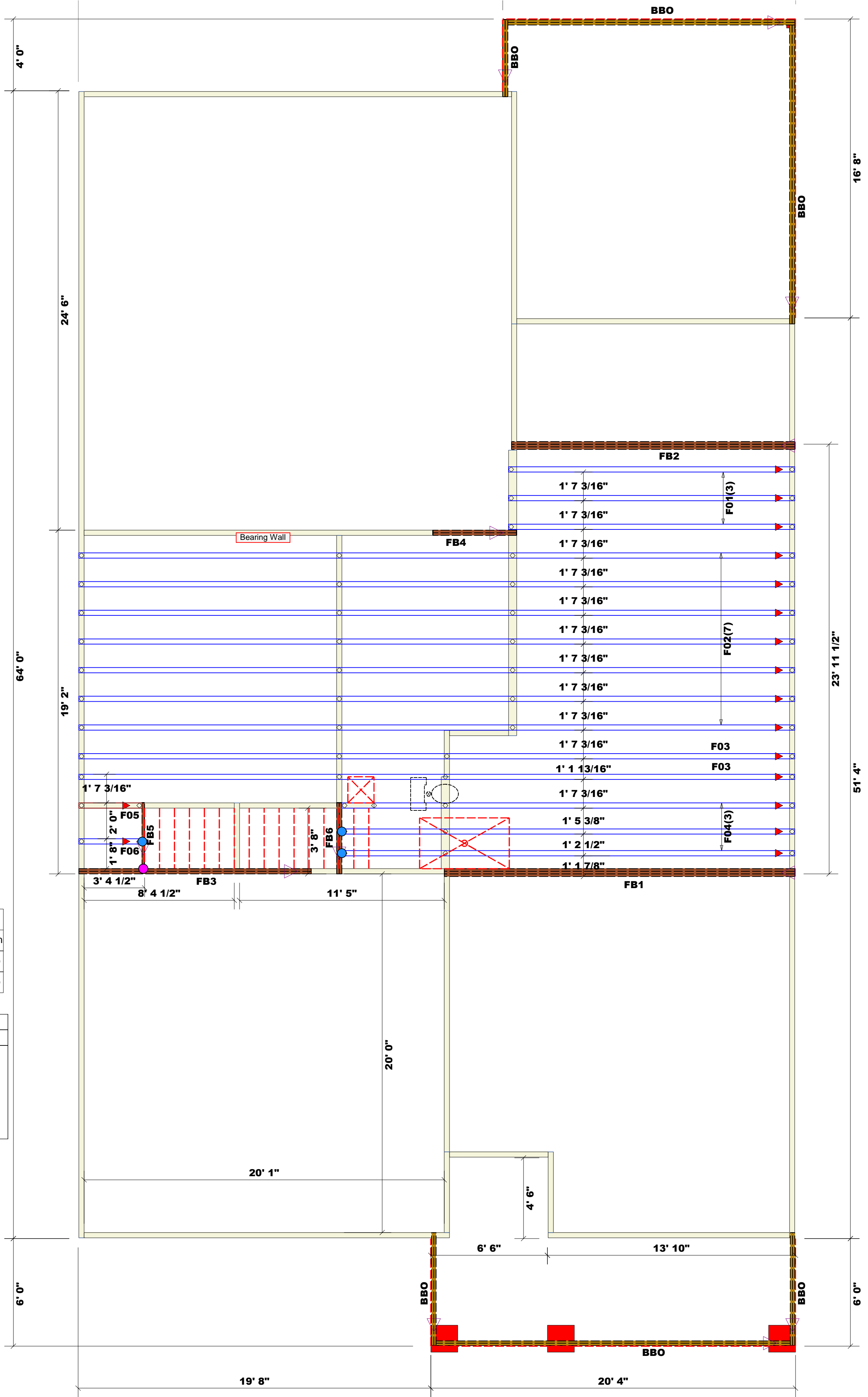
**WALL SCHEDULE**

|                      |  |
|----------------------|--|
| 1st Floor Walls      |  |
| 2nd Floor Walls      |  |
| Non-Bearing Walls    |  |
| Garage Walls Dropped |  |

| Nail Information |            | Connector Information |     |       |          |     |
|------------------|------------|-----------------------|-----|-------|----------|-----|
| Truss            | Header     | Supported Member      | Qty | Manuf | Product  | Sym |
| 16d/3-1/2"       | 16d/3-1/2" | NA                    | 3   | USP   | HUS410   |     |
| 16d/3-1/2"       | 16d/3-1/2" | NA                    | 1   | USP   | IHFL1714 |     |

**Products**

| Net Qty | Plies | Product                 | Length | PlotID |
|---------|-------|-------------------------|--------|--------|
| 2       | 2     | 1-3/4"x 14" LVL Kerto-S | 13' 0" | FB3    |
| 2       | 2     | 1-3/4"x 14" LVL Kerto-S | 5' 0"  | FB4    |
| 1       | 1     | 1-3/4"x 14" LVL Kerto-S | 4' 0"  | FB5    |
| 2       | 2     | 1-3/4"x 14" LVL Kerto-S | 4' 0"  | FB6    |
| 3       | 3     | 1-3/4"x 18" LVL Kerto-S | 20' 0" | FB1    |
| 3       | 3     | 1-3/4"x 18" LVL Kerto-S | 16' 0" | FB2    |



**Truss Placement Plan**  
 SCALE: NTS

▲ = Indicates Left End of Truss (Reference Engineered Truss Drawing)  
 Do NOT Erect Truss Backwards

**LOAD CHART FOR JACK STUDS**  
 (BASED ON TABLES R502.5(1) & (2))  
 NUMBER OF JACK STUDS REQUIRED @ EA END OF HEADERS/BOARDS

| END REACTION (UP TO) @ END OF HEADERS | END REACTION (UP TO) @ END OF HEADERS | END REACTION (UP TO) @ END OF HEADERS |
|---------------------------------------|---------------------------------------|---------------------------------------|
| 1700                                  | 2550                                  | 3400                                  |
| 3400                                  | 5100                                  | 6800                                  |
| 5100                                  | 7650                                  | 10200                                 |
| 6800                                  | 10200                                 | 13600                                 |
| 8500                                  | 12750                                 | 17000                                 |
| 10200                                 | 15300                                 |                                       |
| 11900                                 |                                       |                                       |
| 13600                                 |                                       |                                       |
| 15300                                 |                                       |                                       |

|                  |                           |
|------------------|---------------------------|
| <b>BUILDER</b>   | New Home Inc.             |
| <b>JOB NAME</b>  | Lot 29 Woodbridge South   |
| <b>PLAN</b>      | The Clayton - Low Country |
| <b>SEAL DATE</b> | Seal Date                 |
| <b>QUOTE #</b>   | Quote #                   |
| <b>JOB #</b>     | J0224-0869                |

|                   |                         |
|-------------------|-------------------------|
| <b>CITY / CO.</b> | Fuquay-Varina / Wake    |
| <b>ADDRESS</b>    | 217 Salem Village Drive |
| <b>MODEL</b>      | Floor                   |
| <b>DATE REV.</b>  | 2/16/24                 |
| <b>DRAWN BY</b>   | Johnnie Baggett         |
| <b>SALES REP.</b> | Paul Hawkins            |

**THIS IS A TRUSS PLACEMENT DIAGRAM ONLY.**  
 These trusses are designed as individual building components to be incorporated into the building design at the specification of the building designer. See individual design sheets for each truss design identified on the placement drawing. The building designer is responsible for temporary and permanent bracing of the roof and floor system and for the overall structure. The design of the truss support structure including headers, beams, walls, and columns is the responsibility of the building designer. For general guidance regarding bracing, consult BCS-B1 and BCS-B3 provided with the truss delivery package or online @ sbcindustry.com

Bearing reactions less than or equal to 3000# are deemed to comply with the prescriptive Code requirements. The contractor shall refer to the attached Tables (derived from the prescriptive Code requirements) to determine the minimum foundation size and number of wood studs required to support reactions greater than 3000# but not greater than 15000#. A registered design professional shall be retained to design the support system for any reaction that exceeds those specified in the attached Tables. A registered design professional shall be retained to design the support system for all reactions that exceed 15000#.

Signature: Johnnie Baggett  
 Johnnie Baggett

**comTECH**  
**ROOF & FLOOR TRUSSES & BEAMS**  
 Reilly Road Industrial Park  
 Fayetteville, N.C. 28309  
 Phone: (910) 864-8787  
 Fax: (910) 864-4444