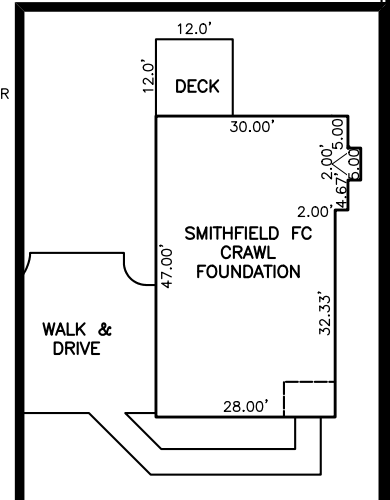


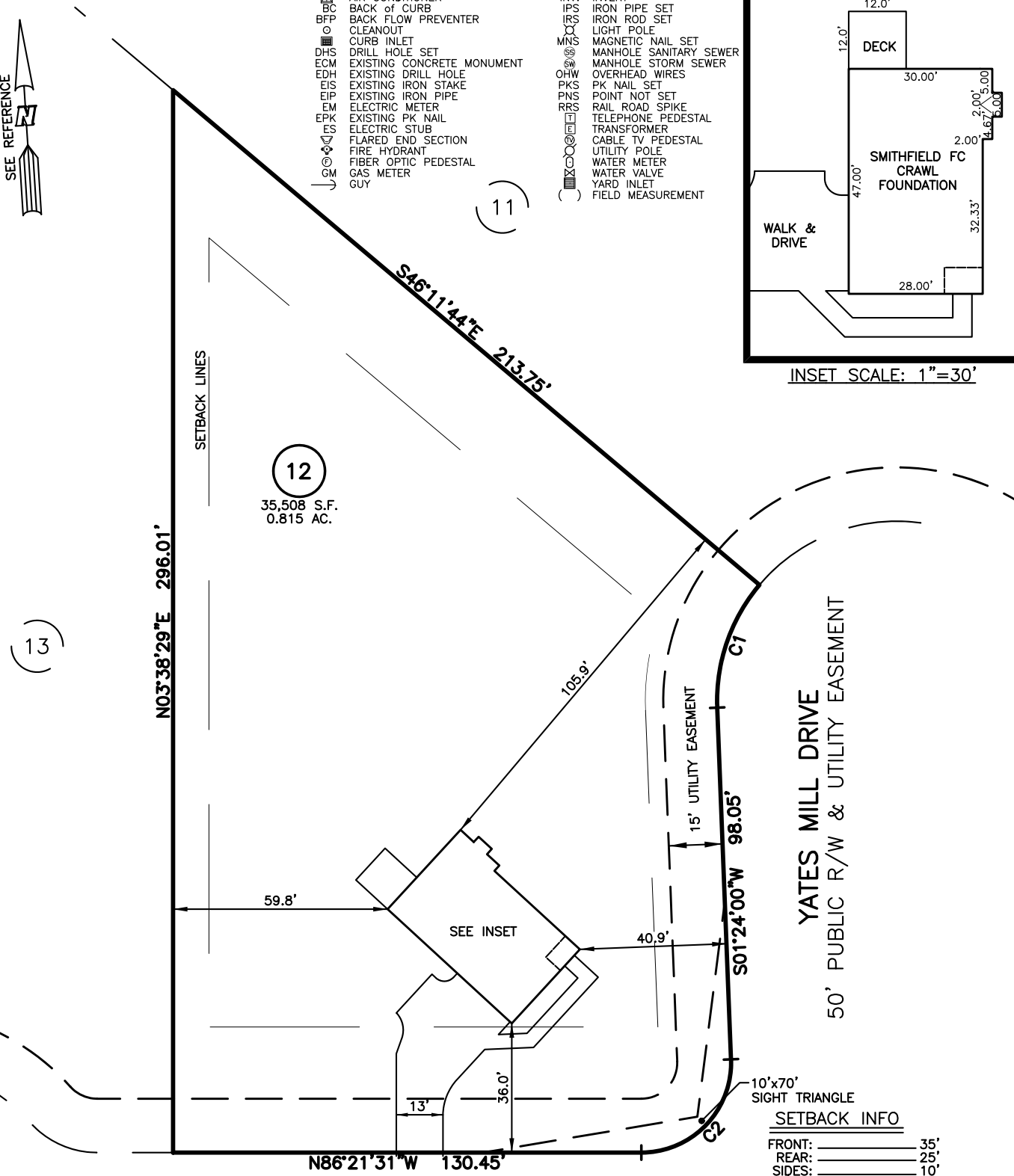
PLOT PLAN FOR
NEW HOME, INC.
 22 AVENTS CREEK WAY
 LOT 12, WOODBRIDGE SOUTH
 BUCKHORN TOWNSHIP, HARNETT COUNTY, NORTH CAROLINA

LEGEND

- | | |
|--------------------------------|--------------------------|
| △ AIR CONDITIONER | INV. INVERT |
| BC BACK OF CURB | IPS IRON PIPE SET |
| BFP BACK FLOW PREVENTER | IRS IRON ROD SET |
| ○ CLEANOUT | ○ LIGHT POLE |
| ■ CURB INLET | MNS MAGNETIC NAIL SET |
| DHS DRILL HOLE SET | ○ MANHOLE SANITARY SEWER |
| ECM EXISTING CONCRETE MONUMENT | ○ MANHOLE STORM SEWER |
| EDH EXISTING DRILL HOLE | OHW OVERHEAD WIRES |
| EIS EXISTING IRON STAKE | PKS PK NAIL SET |
| EIP EXISTING IRON PIPE | PNS POINT NOT SET |
| EM ELECTRIC METER | RRS RAIL ROAD SPIKE |
| EPK EXISTING PK NAIL | ○ TELEPHONE PEDESTAL |
| ES ELECTRIC STUB | ○ TRANSFORMER |
| FLARED END SECTION | ○ CABLE TV PEDESTAL |
| ○ FIRE HYDRANT | ○ UTILITY POLE |
| ○ FIBER OPTIC PEDESTAL | ○ WATER METER |
| ○ GAS METER | ○ WATER VALVE |
| ○ GUY | ○ YARD INLET |
| | () FIELD MEASUREMENT |



INSET SCALE: 1"=30'



SETBACK INFO

FRONT:	35'
REAR:	25'
SIDES:	10'
CORNER SIDE:	20'

REFERENCES:
 P.B. 2023, PGS 92-94

NUM	RADIUS	ARC	DELTA	CHORD BRG	CHORD
C1	50.00'	37.00'	42°24'16"	N22°36'08"E	36.17'
C2	25.00'	40.25'	92°14'29"	S47°31'14"W	36.04'



- NOTES
1. THIS SURVEY SUBJECT TO ANY FACTS THAT MAY BE DISCLOSED BY A FULL AND ACCURATE TITLE SEARCH.
 2. THIS MAP MAY NOT BE A CERTIFIED SURVEY AND HAS NOT BEEN REVIEWED BY A LOCAL GOVERNMENT AGENCY FOR COMPLIANCE WITH ANY APPLICABLE LAND DEVELOPMENT REGULATIONS AND HAS NOT BEEN REVIEWED FOR COMPLIANCE WITH RECORDING REQUIREMENTS FOR PLATS.

IMPERVIOUS SURFACES

HOUSE	1,360 S.F.
WALK & DRIVE	1,090 S.F.
DECK	150 S.F.
TOTAL	2,600 S.F.
MAX. IMPERVIOUS	4,000 S.F.

PLOT PLAN
 PRELIMINARY PLAT- NOT FOR RECORDATION,
 CONVEYANCE OR SALES

DATE: FEB. 28, 2024

REV CODE: 1.FLIP, 2.PLAN, 3.ROTATE, 4.MOVE, 5.SS
 6.SEVERAL OF ABOVE, 7.LAND FEATURE, 8. OTHER

F.B. _____

RWK, PA
 ENGINEERING ~ SURVEYING
 CORPORATE LICENSE: C-1771
 101 W. MAIN ST., SUITE 202
 GARNER, NC 27529
 PHONE (919) 779-4854
 FAX (919) 779-4056