

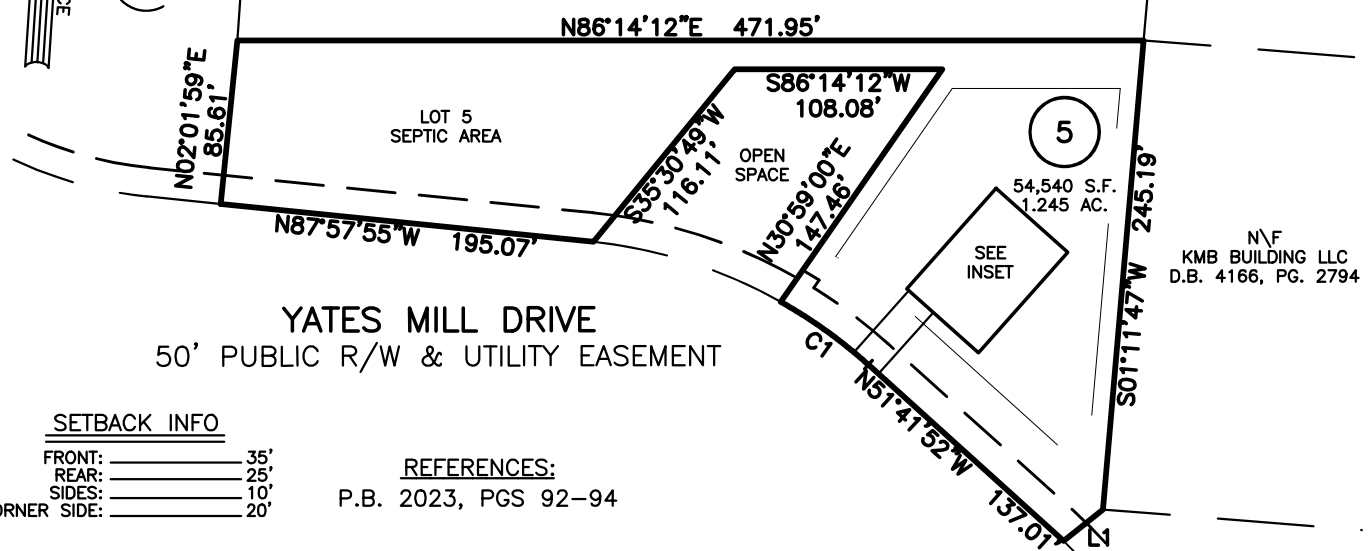
NEW HOME INC., LLC  
 146 YATES MILL DRIVE  
 LOT 5, WOODBRIDGE SOUTH  
 BUCKHORN TOWNSHIP, HARNETT COUNTY, NORTH CAROLINA

LINE	BEARING	DISTANCE
L1	N47°31'35"E	26.25'

NUM	RADIUS	ARC	DELTA	CHORD BRG	CHORD
C1	255.00'	56.22'	12°37'54"	S58°04'51"E	56.10'

N\F  
 RANDY M. & JOSHUA C. JONES  
 D.B. 3515, PG. 836  
 P.B. 2018, PG. 272

N\F  
 JEFFREY MOORE  
 D.B. 2139, PG. 569

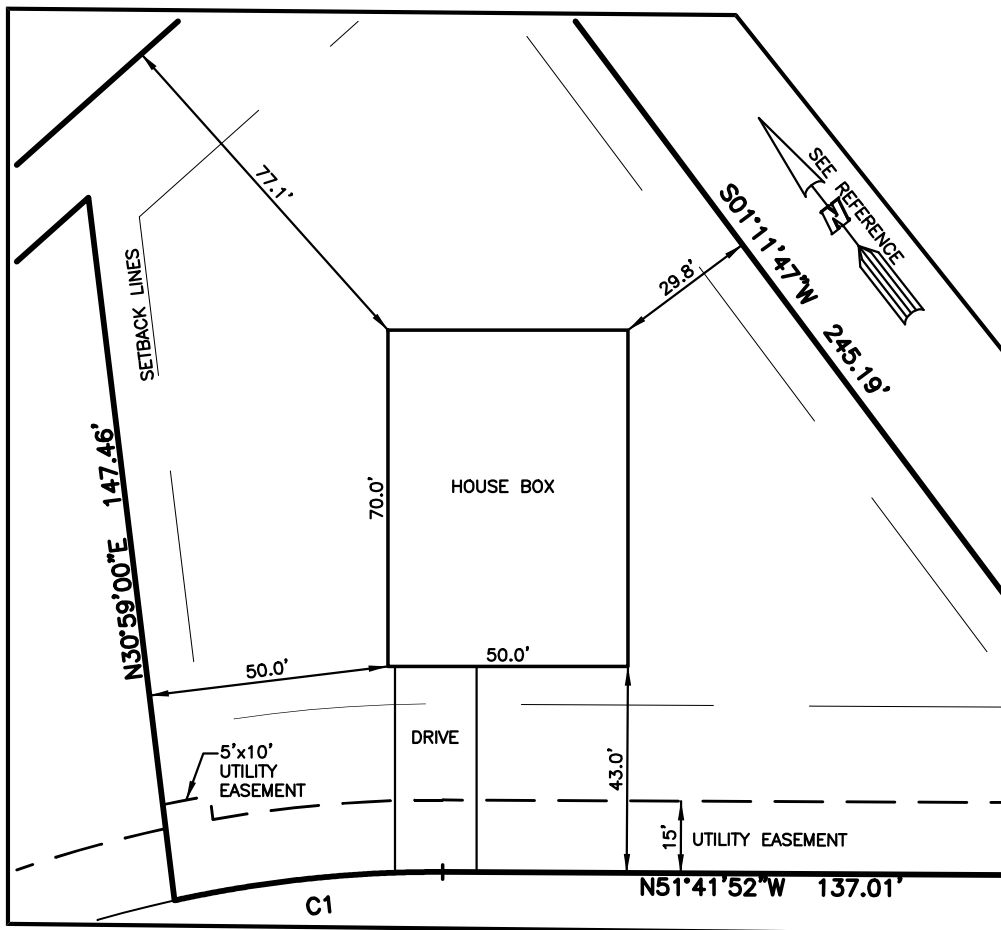


SETBACK INFO

FRONT:	35'
REAR:	25'
SIDES:	10'
CORNER SIDE:	20'

REFERENCES:

P.B. 2023, PGS 92-94



INSET  
 SCALE: 1"=40'

LEGEND

- ▲ AIR CONDITIONER
- BC BACK OF CURB
- BFP BACK FLOW PREVENTER
- CLEANOUT
- CURB INLET
- DHS DRILL HOLE SET
- ECM EXISTING CONCRETE MONUMENT
- EDH EXISTING DRILL HOLE
- EIS EXISTING IRON STAKE
- EIP EXISTING IRON PIPE
- EM ELECTRIC METER
- EPK EXISTING PK NAIL
- ES ELECTRIC STUB
- FLARED END SECTION
- FIRE HYDRANT
- FIBER OPTIC PEDESTAL
- GAS METER
- GUY
- INV INVERT
- IPS IRON PIPE SET
- IRS IRON ROD SET
- LIGHT POLE
- MNS MAGNETIC NAIL SET
- MANHOLE SANITARY SEWER
- MANHOLE STORM SEWER
- OHV OVERHEAD WIRES
- PKS PK NAIL SET
- PNS POINT NOT SET
- RRS RAIL ROAD SPIKE
- TELEPHONE PEDESTAL
- TRANSFORMER
- CABLE TV PEDESTAL
- UTILITY POLE
- WATER METER
- WATER VALVE
- YARD INLET
- ( ) FIELD MEASUREMENT



SCALE: 1" = 100'

FOR REPRESENTATIVE PURPOSES ONLY  
 NOT FOR PERMITTING, RECORDATION,  
 CONVEYANCE OR SALES

NOTES

1. THIS SURVEY SUBJECT TO ANY FACTS THAT MAY BE DISCLOSED BY A FULL AND ACCURATE TITLE SEARCH.
2. THIS MAP MAY NOT BE A CERTIFIED SURVEY AND HAS NOT BEEN REVIEWED BY A LOCAL GOVERNMENT AGENCY FOR COMPLIANCE WITH ANY APPLICABLE LAND DEVELOPMENT REGULATIONS AND HAS NOT BEEN REVIEWED FOR COMPLIANCE WITH RECORDING REQUIREMENTS FOR PLATS.

HOUSE FIT  
 ONLY

DATE: DEC. 06, 2023

F.B. \_\_\_\_\_

**RWK, PA**

ENGINEERING ~ SURVEYING

CORPORATE LICENSE: C-1771  
 101 W. MAIN ST., SUITE 202  
 GARNER, NC 27529  
 PHONE (919) 779-4854  
 FAX (919) 779-4056