

Job 72405466	Truss A	Truss Type Truss	Qty 9	Ply 1	Professional Bldrs / Apex Craftsman RF Job Reference (optional)
-----------------	------------	---------------------	----------	----------	--

UFP Mid Atlantic LLC, 5631 S. NC 62, Burlington, NC, r thomas

Run: 8.62 S Sep 22 2022 Print: 8.620 S Sep 22 2022 MiTek Industries, Inc. Thu Feb 22 16:07:50

Page: 1

ID:V6K3GEJC2T0UfsMLGs58psymmE2-BEBtpkMcl6zHWwITAdVFPQ4UdyJronml5oZbpziYXN

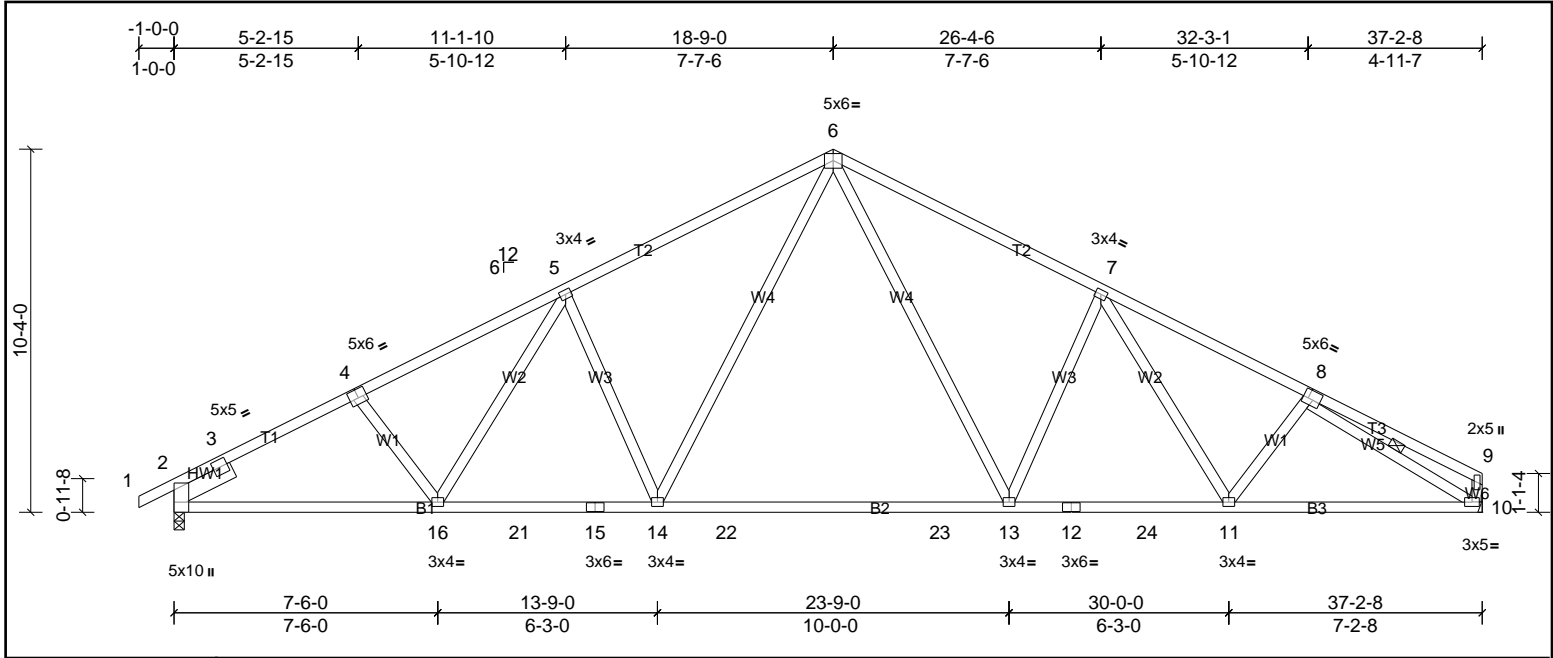


Plate Offsets (X, Y): [4:0-3-0,0-3-0], [8:0-1-12,0-3-0]

Loading	(psf)	Spacing	2-0-0	CSI	DEFL	in	(loc)	l/defl	L/d	PLATES	GRIP	
TCLL (roof)	20.0	Plate Grip DOL	1.15	TC	0.73	Vert(LL)	-0.36	13-14	>999	240	MT20	244/190
TCDL	10.0	Lumber DOL	1.15	BC	0.87	Vert(CT)	-0.66	13-14	>671	180		
BCLL	0.0*	Rep Stress Incr	YES	WB	0.54	Horz(CT)	0.10	10	n/a	n/a		
BCDL	10.0	Code	IRC2015/TPI2014	Matrix-MSH							Weight: 216 lb	FT = 20%

LUMBER	BRACING
TOP CHORD 2x4 SP No.1 *Except* T1:2x4 SP SS, T3:2x4 SP No.2	TOP CHORD Structural wood sheathing directly applied or 2-2-0 oc purlins, except end verticals.
BOT CHORD 2x4 SP No.1 *Except* B3:2x4 SP No.2	BOT CHORD Rigid ceiling directly applied or 8-6-11 oc bracing.
WEBS 2x4 SP No.3	WEBS 1 Row at midpt
SLIDER Left 2x6 SP No.2 -- 1-11-0	
REACTIONS (lb/size) 2=1543/0-3-8, (min. 0-1-13), 10=1482/ Mechanical, (min. 0-1-8) Max Horiz 2=176 (LC 14) Max Uplift 2=224 (LC 10), 10=198 (LC 11)	
FORCES (lb) - Max. Comp./Max. Ten. - All forces 250 (lb) or less except when shown. TOP CHORD 2-3=-307/236, 3-4=-2350/656, 4-5=-2227/666, 5-6=-2078/704, 6-7=-2043/696, 7-8=-2213/660, 8-9=-278/115 BOT CHORD 2-16=-475/1995, 16-21=-380/1935, 15-21=-380/1935, 14-15=-380/1935, 14-22=-158/1408, 22-23=-158/1408, 13-23=-158/1408, 12-13=-369/1893, 12-24=-369/1893, 11-24=-369/1893, 10-11=-460/1905 WEBS 5-14=-535/321, 6-14=-220/840, 7-13=-503/310, 6-13=-204/782, 8-10=-2075/539	

- NOTES**
- Unbalanced roof live loads have been considered for this design.
  - Wind: ASCE 7-10; Vult=130mph (3-second gust) Vasd=103mph; TCCL=6.0psf; BCDL=6.0psf; h=35ft; Cat. II; Exp B; Enclosed; MWFRS (envelope) exterior zone and C-C Exterior (2) zone; cantilever left and right exposed; end vertical left and right exposed; C-C for members and forces & MWFRS for reactions shown; Lumber DOL=1.60 plate grip DOL=1.60
  - This truss has been designed for a 10.0 psf bottom chord live load nonconcurrent with any other live loads.
  - \* This truss has been designed for a live load of 20.0psf on the bottom chord in all areas where a rectangle 3-06-00 tall by 2-00-00 wide will fit between the bottom chord and any other members, with BCDL = 10.0psf.
  - Provide mechanical connection (by others) of truss to bearing plate capable of withstanding 224 lb uplift at joint 2 and 198 lb uplift at joint 10.
  - This truss is designed in accordance with the 2015 International Residential Code sections R502.11.1 and R802.10.2 and referenced standard ANSI/TPI 1.



This design is based upon parameters shown, and is for an individual building component to be installed and loaded vertically. Applicability of design parameters and proper incorporation of component is responsibility of the Building Designer. Building Designer shall verify all design information on this sheet for conformance with conditions and requirements of the specific building and governing codes and ordinances. Building Designer accepts responsibility for the correctness or accuracy of the design information as it may relate to a specific building. Certification is valid only when truss is fabricated by a UFPI plant. Bracing shown is for lateral support of truss members only and does not replace erection and permanent bracing. Refer to Building Component Safety Information (BCSI) for general guidance regarding storage, erection and bracing available from SBCA and Truss Plate Institute.



Job 72405466	Truss A1	Truss Type Truss	Qty 10	Ply 1	Professional Bldrs / Apex Craftsman RF Job Reference (optional)
-----------------	-------------	---------------------	-----------	----------	--

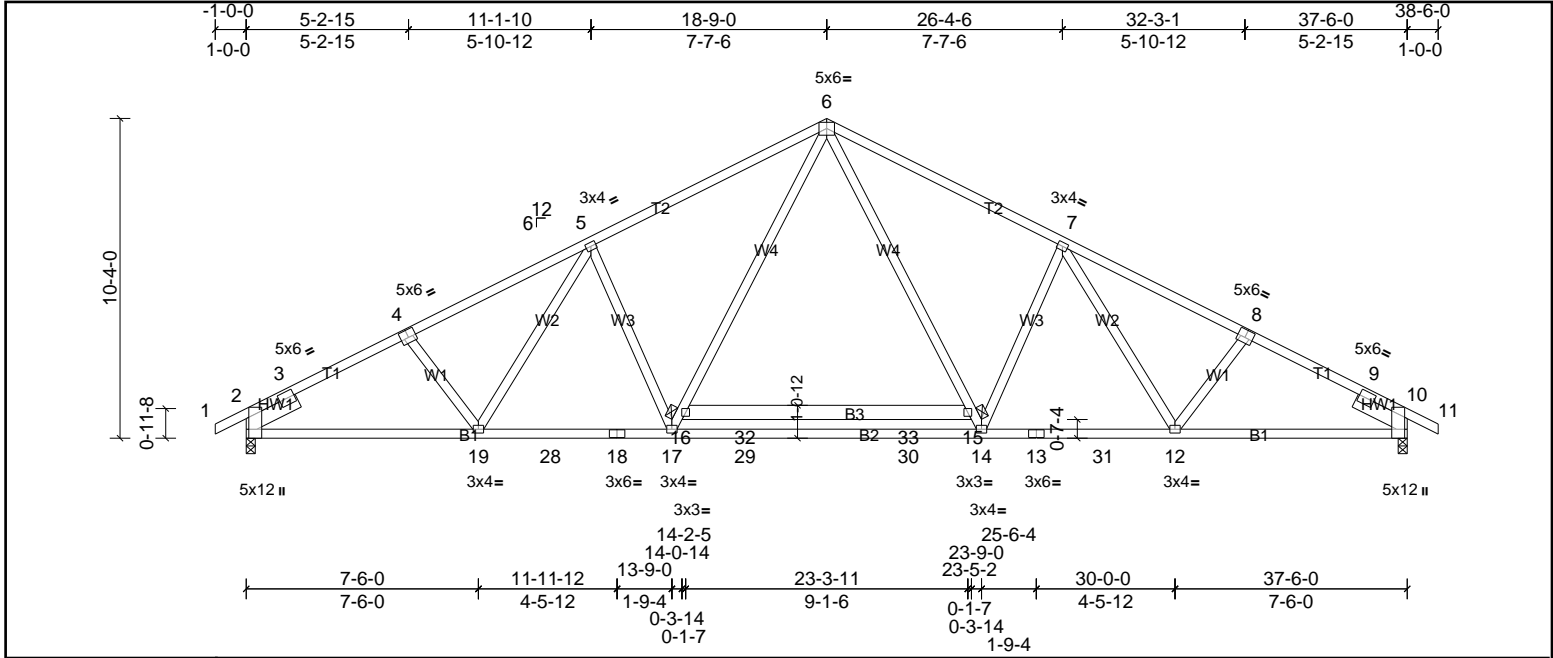


Plate Offsets (X, Y): [2:0-7-9,Edge], [4:0-3-0,0-3-0], [7:0-0-0,0-0-0], [8:0-3-0,0-3-0], [10:0-7-9,Edge]

Loading	(psf)	Spacing	2-0-0	CSI	DEFLL	in	(loc)	l/defl	L/d	PLATES	GRIP	
TCLL (roof)	20.0	Plate Grip DOL	1.15	TC	0.88	Vert(LL)	-0.38	14-17	>999	240	MT20	244/190
TCDL	10.0	Lumber DOL	1.15	BC	0.98	Vert(CT)	-0.72	14-17	>621	180		
BCLL	0.0*	Rep Stress Incr	YES	WB	0.57	Horz(CT)	0.16	10	n/a	n/a		
BCDL	10.0	Code	IRC2015/TPI2014	Matrix-MSH							Weight: 236 lb	FT = 20%

LUMBER	BRACING
TOP CHORD 2x4 SP No.1 *Except* T1:2x4 SP SS	TOP CHORD Structural wood sheathing directly applied or 2-2-0 oc purlins.
BOT CHORD 2x4 SP No.1 *Except* B3:2x6 SP No.2	BOT CHORD Rigid ceiling directly applied or 2-2-0 oc bracing. Except:
WEBS 2x4 SP No.3	6-0-0 oc bracing: 15-16
SLIDER Left 2x6 SP No.2 -- 1-11-0, Right 2x6 SP No.2 -- 1-11-0	
<b>REACTIONS</b>	
(lb/size) 2=1654/0-3-8, (min. 0-2-0), 10=1654/0-3-8, (min. 0-2-0)	
Max Horiz 2=172 (LC 11)	
Max Uplift 2=168 (LC 10), 10=168 (LC 11)	
Max Grav 2=1680 (LC 2), 10=1680 (LC 2)	
<b>FORCES</b>	
(lb) - Max. Comp./Max. Ten. - All forces 250 (lb) or less except when shown.	
TOP CHORD 2-3=-291/292, 3-4=-2650/561, 4-5=-2555/570, 5-6=-2440/596, 6-7=-2440/596, 7-8=-2555/570, 8-9=-2650/561, 9-10=-187/292	
BOT CHORD 2-19=-376/2256, 19-28=-268/2253, 18-28=-268/2253, 17-18=-268/2253, 17-29=-59/1781, 29-30=-59/1781, 14-30=-59/1781, 13-14=-268/2253, 13-31=-268/2253, 12-31=-268/2253, 10-12=-376/2255	
WEBS 5-17=-525/327, 16-17=-217/795, 6-16=-161/1003, 6-15=-161/1003, 14-15=-217/795, 7-14=-525/327	

- NOTES**
- Unbalanced roof live loads have been considered for this design.
  - Wind: ASCE 7-10; Vult=130mph (3-second gust) Vasd=103mph; TCCL=6.0psf; BCDL=6.0psf; h=35ft; Cat. II; Exp B; Enclosed; MWFRS (envelope) exterior zone and C-C Exterior (2) zone; cantilever left and right exposed; end vertical left and right exposed; C-C for members and forces & MWFRS for reactions shown; Lumber DOL=1.60 plate grip DOL=1.60
  - This truss has been designed for a 10.0 psf bottom chord live load nonconcurrent with any other live loads.
  - \* This truss has been designed for a live load of 20.0psf on the bottom chord in all areas where a rectangle 3-06-0 tall by 2-00-00 wide will fit between the bottom chord and any other members, with BCDL = 10.0psf.
  - Provide mechanical connection (by others) of truss to bearing plate capable of withstanding 168 lb uplift at joint 2 and 168 lb uplift at joint 10.
  - This truss is designed in accordance with the 2015 International Residential Code sections R502.11.1 and R802.10.2 and referenced standard ANSI/TPI 1.



Job 72405466	Truss A1G	Truss Type Truss	Qty 1	Ply 1	Professional Bldrs / Apex Craftsman RF Job Reference (optional)
-----------------	--------------	---------------------	----------	----------	--

UFP Mid Atlantic LLC, 5631 S. NC 62, Burlington, NC, r thomas

Run: 8.62 S Sep 22 2022 Print: 8.620 S Sep 22 2022 MiTek Industries, Inc. Thu Feb 22 16:07:51

Page: 1

ID:88XACXF3ExOBZ5TOTJVz6pyymE7-gRIF14NE3Q5884KfKlL0eocngMr6XKKRzIY67FziYXM

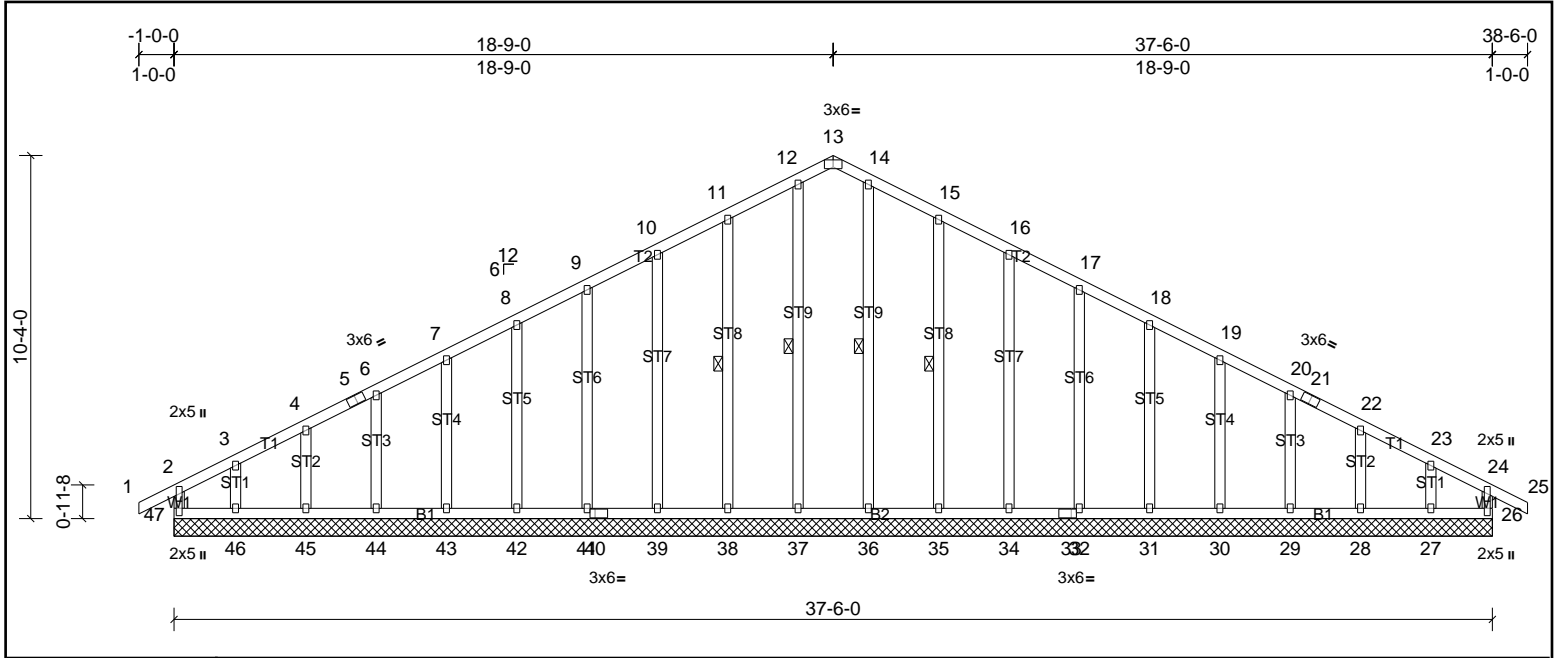


Plate Offsets (X, Y): [13:0-3-0,Edge], [33:0-1-12,0-1-8], [40:0-1-12,0-1-8]

Loading	(psf)	Spacing	2-0-0	CSI	DEFL	in	(loc)	l/defl	L/d	PLATES	GRIP	
TCLL (roof)	20.0	Plate Grip DOL	1.15	TC	0.20	Vert(LL)	n/a	-	n/a	999	MT20	244/190
TCDL	10.0	Lumber DOL	1.15	BC	0.10	Vert(CT)	n/a	-	n/a	999		
BCLL	0.0*	Rep Stress Incr	YES	WB	0.13	Horz(CT)	0.01	26	n/a	n/a		
BCDL	10.0	Code	IRC2015/TPI2014	Matrix-MR							Weight: 265 lb	FT = 20%

LUMBER		BRACING	
TOP CHORD	2x4 SP No.2	TOP CHORD	Structural wood sheathing directly applied or 6-0-0 oc purlins, except end verticals.
BOT CHORD	2x4 SP No.2	BOT CHORD	Rigid ceiling directly applied or 10-0-0 oc bracing.
WEBS	2x4 SP No.3	WEBS	1 Row at midpt
OTHERS	2x4 SP No.3		12-37, 14-36, 11-38, 15-35

**REACTIONS** All bearings 37-6-0.  
 (lb) - Max Horiz 47=-153 (LC 8)  
 Max Uplift All uplift 100 (lb) or less at joint(s) 26, 28, 29, 30, 31, 32, 34, 35, 38, 39, 41, 42, 43, 44, 45, 47 except 27=-137 (LC 11), 46=-155 (LC 10)  
 Max Grav All reactions 250 (lb) or less at joint(s) 26, 27, 28, 29, 30, 31, 32, 34, 35, 36, 37, 38, 39, 41, 42, 43, 44, 45, 46, 47

**FORCES** (lb) - Max. Comp./Max. Ten. - All forces 250 (lb) or less except when shown.  
 TOP CHORD 10-11=-103/263, 11-12=-126/329, 12-13=-113/288, 13-14=-113/288, 14-15=-126/329, 15-16=-103/263

- NOTES**
- Unbalanced roof live loads have been considered for this design.
  - Wind: ASCE 7-10; Vult=130mph (3-second gust) Vasd=103mph; TCCL=6.0psf; BCCL=6.0psf; h=35ft; Cat. II; Exp B; Enclosed; MWFRS (envelope) exterior zone and C-C Exterior (2) zone; cantilever left and right exposed; end vertical left and right exposed; C-C for members and forces & MWFRS for reactions shown; Lumber DOL=1.60 plate grip DOL=1.60
  - Truss designed for wind loads in the plane of the truss only.
  - All plates are 2x3 MT20 unless otherwise indicated.
  - Gable requires continuous bottom chord bearing.
  - Truss to be fully sheathed from one face or securely braced against lateral movement (i.e. diagonal web).
  - Gable studs spaced at 2-0-0 oc.
  - This truss has been designed for a 10.0 psf bottom chord live load nonconcurrent with any other live loads.
  - \* This truss has been designed for a live load of 20.0psf on the bottom chord in all areas where a rectangle 3-06-00 tall by 2-00-00 wide will fit between the bottom chord and any other members.
  - Provide mechanical connection (by others) of truss to bearing plate capable of withstanding 100 lb uplift at joint(s) 47, 26, 38, 39, 41, 42, 43, 44, 45, 35, 34, 32, 31, 30, 29, 28 except (jt=lb) 46=155, 27=136.
  - This truss is designed in accordance with the 2015 International Residential Code sections R502.11.1 and R802.10.2 and referenced standard ANSI/TPI 1.



This design is based upon parameters shown, and is for an individual building component to be installed and loaded vertically. Applicability of design parameters and proper incorporation of component is responsibility of the Building Designer. Building Designer shall verify all design information on this sheet for conformance with conditions and requirements of the specific building and governing codes and ordinances. Building Designer accepts responsibility for the correctness or accuracy of the design information as it may relate to a specific building. Certification is valid only when truss is fabricated by a UFPI plant. Bracing shown is for lateral support of truss members only and does not replace erection and permanent bracing. Refer to Building Component Safety Information (BCSI) for general guidance regarding storage, erection and bracing available from SBCA and Truss Plate Institute.



Job 72405466	Truss AG	Truss Type Truss	Qty 1	Ply 1	Professional Bldrs / Apex Craftsman RF Job Reference (optional)
-----------------	-------------	---------------------	----------	----------	--

UFP Mid Atlantic LLC, 5631 S. NC 62, Burlington, NC, r thomas

Run: 8.620 S Sep 22 2022 Print: 8.620 S Sep 22 2022 MiTek Industries, Inc. Thu Feb 22 16:07:52

Page: 1

ID:ZjClrZHyXsmmQYCz8R3gjRyymE4-8dJeEPOsqjD?IEvrH2XtKr9yOIBGGnabCPHfghziYXL

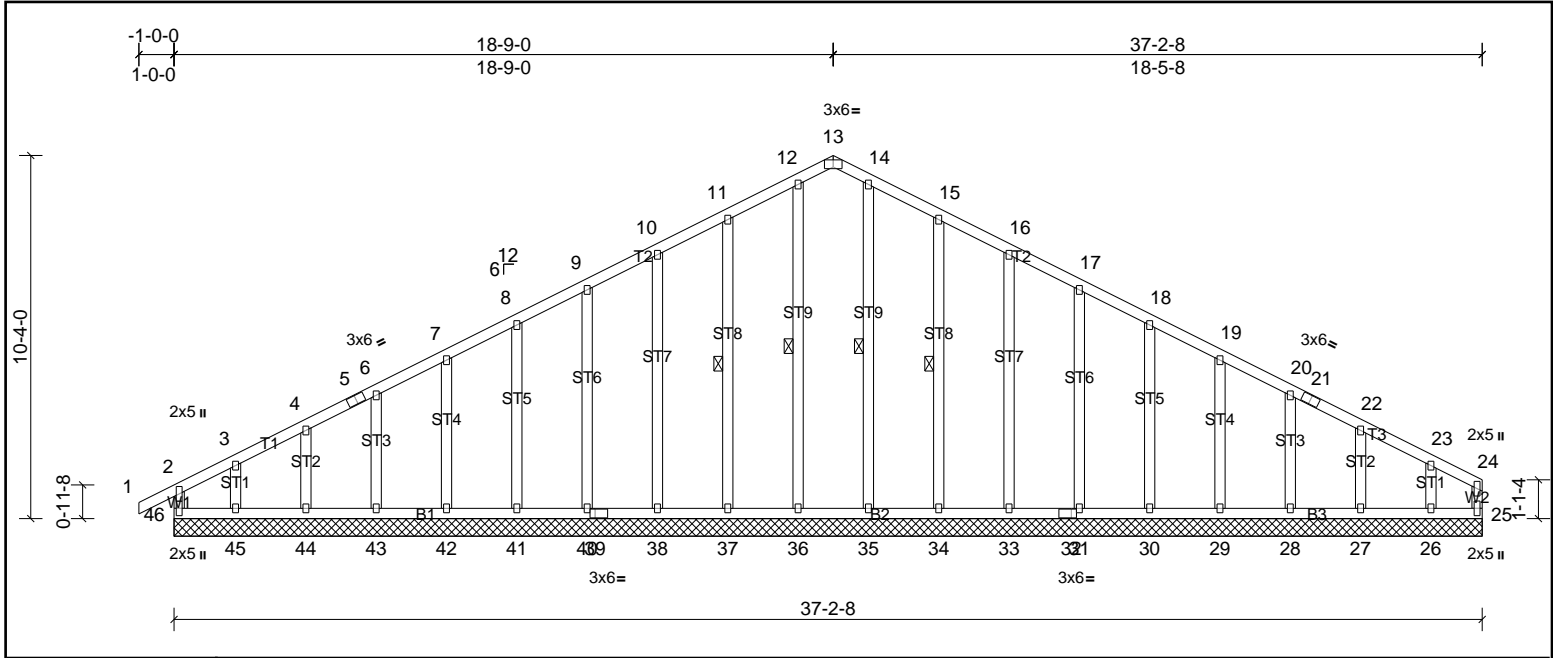


Plate Offsets (X, Y): [13:0-3-0,Edge], [32:0-1-12,0-1-8], [39:0-1-12,0-1-8]

Loading	(psf)	Spacing	2-0-0	CSI	DEFL	in	(loc)	l/defl	L/d	PLATES	GRIP	
TCLL (roof)	20.0	Plate Grip DOL	1.15	TC	0.20	Vert(LL)	n/a	-	n/a	999	MT20	244/190
TCDL	10.0	Lumber DOL	1.15	BC	0.10	Vert(CT)	n/a	-	n/a	999		
BCLL	0.0*	Rep Stress Incr	YES	WB	0.13	Horz(CT)	0.01	25	n/a	n/a		
BCDL	10.0	Code	IRC2015/TPI2014	Matrix-MR							Weight: 262 lb	FT = 20%

LUMBER	BRACING
TOP CHORD 2x4 SP No.2	TOP CHORD Structural wood sheathing directly applied or 6-0-0 oc purlins, except end verticals.
BOT CHORD 2x4 SP No.2	BOT CHORD Rigid ceiling directly applied or 10-0-0 oc bracing.
WEBS 2x4 SP No.3	WEBS 1 Row at midpt
OTHERS 2x4 SP No.3	

**REACTIONS** All bearings 37-2-8.  
 (lb) - Max Horiz 46=161 (LC 7)  
 Max Uplift All uplift 100 (lb) or less at joint(s) 25, 27, 28, 29, 30, 31, 33, 34, 37, 38, 40, 41, 42, 43, 44, 46 except 26=158 (LC 11), 45=157 (LC 10)  
 Max Grav All reactions 250 (lb) or less at joint(s) 25, 26, 27, 28, 29, 30, 31, 33, 34, 35, 36, 37, 38, 40, 41, 42, 43, 44, 45, 46

**FORCES** (lb) - Max. Comp./Max. Ten. - All forces 250 (lb) or less except when shown.  
 TOP CHORD 10-11=-110/266, 11-12=-134/332, 12-13=-118/290, 13-14=-118/290, 14-15=-134/332, 15-16=-110/266

- NOTES**
- Unbalanced roof live loads have been considered for this design.
  - Wind: ASCE 7-10; Vult=130mph (3-second gust) Vasd=103mph; TCCL=6.0psf; BCCL=6.0psf; h=35ft; Cat. II; Exp B; Enclosed; MWFRS (envelope) exterior zone and C-C Exterior (2) zone; cantilever left and right exposed; end vertical left and right exposed; C-C for members and forces & MWFRS for reactions shown; Lumber DOL=1.60 plate grip DOL=1.60
  - Truss designed for wind loads in the plane of the truss only.
  - All plates are 2x3 MT20 unless otherwise indicated.
  - Gable requires continuous bottom chord bearing.
  - Truss to be fully sheathed from one face or securely braced against lateral movement (i.e. diagonal web).
  - Gable studs spaced at 2-0-0 oc.
  - This truss has been designed for a 10.0 psf bottom chord live load nonconcurrent with any other live loads.
  - \* This truss has been designed for a live load of 20.0psf on the bottom chord in all areas where a rectangle 3-06-00 tall by 2-00-00 wide will fit between the bottom chord and any other members.
  - Provide mechanical connection (by others) of truss to bearing plate capable of withstanding 100 lb uplift at joint(s) 46, 25, 37, 38, 40, 41, 42, 43, 44, 34, 33, 31, 30, 29, 28, 27 except (it=lb) 45=156, 26=158.
  - This truss is designed in accordance with the 2015 International Residential Code sections R502.11.1 and R802.10.2 and referenced standard ANSI/TPI 1.



This design is based upon parameters shown, and is for an individual building component to be installed and loaded vertically. Applicability of design parameters and proper incorporation of component is responsibility of the Building Designer. Building Designer shall verify all design information on this sheet for conformance with conditions and requirements of the specific building and governing codes and ordinances. Building Designer accepts responsibility for the correctness or accuracy of the design information as it may relate to a specific building. Certification is valid only when truss is fabricated by a UFPI plant. Bracing shown is for lateral support of truss members only and does not replace erection and permanent bracing. Refer to Building Component Safety Information (BCSI) for general guidance regarding storage, erection and bracing available from SBCA and Truss Plate Institute.



Job 72405466	Truss B	Truss Type Truss	Qty 3	Ply 1	Professional Bldrs / Apex Craftsman RF Job Reference (optional)
-----------------	------------	---------------------	----------	----------	--

UFP Mid Atlantic LLC, 5631 S. NC 62, Burlington, NC, r thomas

Run: 8.620 S Sep 22 2022 Print: 8.620 S Sep 22 2022 MiTek Industries, Inc. Thu Feb 22 16:07:52

Page: 1

ID:dL5YQtGh?FW2AF2a100Ce0yymE6-8dJeEPOsqjD?IEvrH2XtKr9sBlzcGmQbCPHfghziYXL

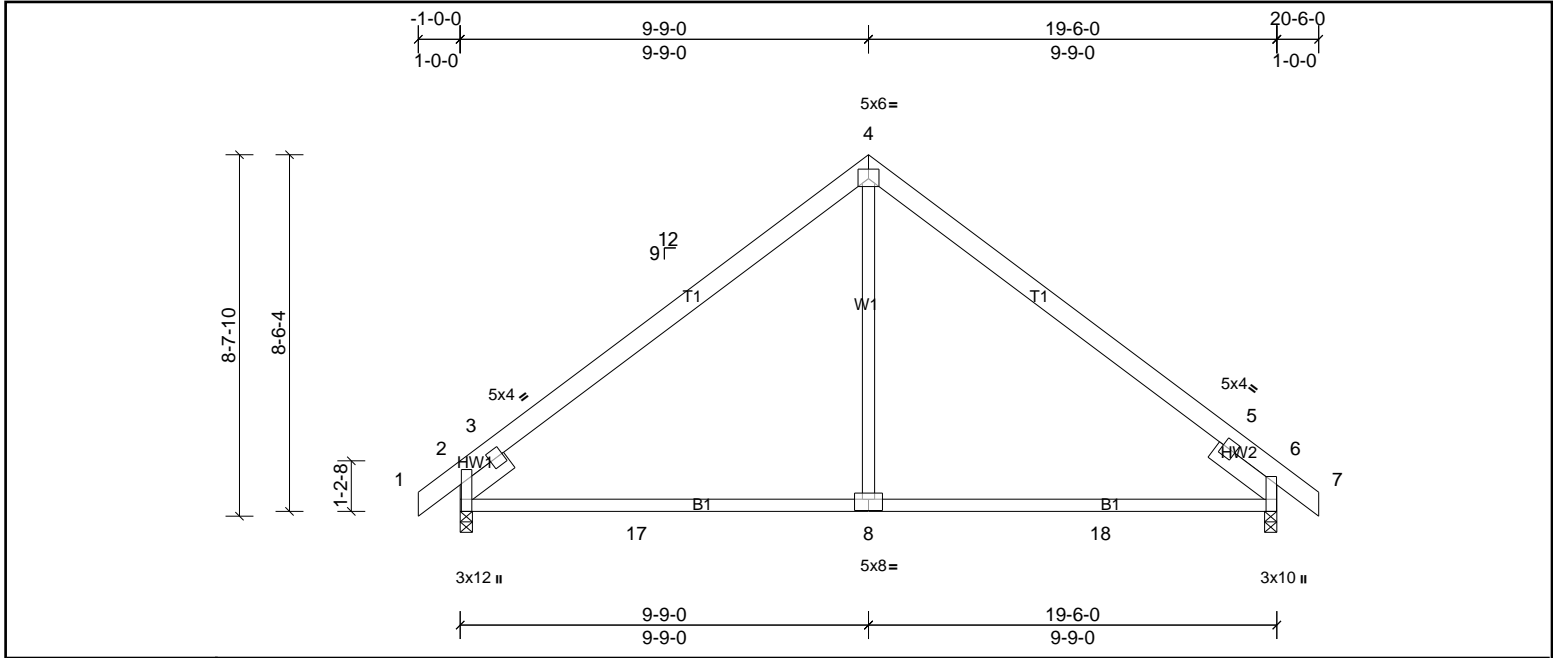


Plate Offsets (X, Y): [2:0-7-10,Edge], [6:0-7-10,Edge], [8:0-4-0,0-3-4]

Loading	(psf)	Spacing	2-0-0	CSI	DEFL	in	(loc)	l/defl	L/d	PLATES	GRIP
TCLL (roof)	20.0	Plate Grip DOL	1.15	TC	Vert(LL)	-0.18	8-15	>999	240	MT20	244/190
TCDL	10.0	Lumber DOL	1.15	BC	Vert(CT)	-0.30	8-15	>775	180		
BCLL	0.0*	Rep Stress Incr	YES	WB	Horz(CT)	-0.07	2	n/a	n/a		
BCDL	10.0	Code	IRC2015/TPI2014	Matrix-MSH						Weight: 113 lb	FT = 20%

LUMBER		BRACING	
TOP CHORD	2x6 SP No.2	TOP CHORD	Structural wood sheathing directly applied or 6-0-0 oc purlins.
BOT CHORD	2x4 SP No.2	BOT CHORD	Rigid ceiling directly applied or 2-2-0 oc bracing.
WEBS	2x4 SP No.3		
SLIDER	Left 2x6 SP No.2 -- 1-6-0, Right 2x6 SP No.2 -- 1-11-0		
<b>REACTIONS</b>	(lb/size) 2=840/0-3-8, (min. 0-1-8), 6=840/0-3-8, (min. 0-1-8)		
	Max Horiz 2=208 (LC 8)		
	Max Uplift 2=111 (LC 10), 6=111 (LC 11)		
	Max Grav 2=932 (LC 17), 6=932 (LC 18)		
<b>FORCES</b>	(lb) - Max. Comp./Max. Ten. - All forces 250 (lb) or less except when shown.		
TOP CHORD	2-3=-495/0, 3-4=-972/189, 4-5=-962/190, 5-6=-419/0		
BOT CHORD	2-17=-261/716, 8-17=-14/716, 8-18=-14/716, 6-18=-14/716		
WEBS	4-8=0/540		

- NOTES**
- 1) Unbalanced roof live loads have been considered for this design.
  - 2) Wind: ASCE 7-10; Vult=130mph (3-second gust) Vasd=103mph; TCCL=6.0psf; BCDL=6.0psf; h=35ft; Cat. II; Exp B; Enclosed; MWFRS (envelope) exterior zone and C-C Exterior (2) zone; cantilever left and right exposed; end vertical left and right exposed; C-C for members and forces & MWFRS for reactions shown; Lumber DOL=1.60 plate grip DOL=1.60
  - 3) This truss has been designed for a 10.0 psf bottom chord live load nonconcurrent with any other live loads.
  - 4) \* This truss has been designed for a live load of 20.0psf on the bottom chord in all areas where a rectangle 3-06-00 tall by 2-00-00 wide will fit between the bottom chord and any other members, with BCDL = 10.0psf.
  - 5) Provide mechanical connection (by others) of truss to bearing plate capable of withstanding 111 lb uplift at joint 2 and 111 lb uplift at joint 6.
  - 6) This truss is designed in accordance with the 2015 International Residential Code sections R502.11.1 and R802.10.2 and referenced standard ANSI/TPI 1.





Job 72405466	Truss BG	Truss Type Truss	Qty 1	Ply 1	Professional Bldrs / Apex Craftsman RF Job Reference (optional)
-----------------	-------------	---------------------	----------	----------	--

UFP Mid Atlantic LLC, 5631 S. NC 62, Burlington, NC, r thomas

Run: 8.62 S Sep 22 2022 Print: 8.620 S Sep 22 2022 MiTek Industries, Inc. Thu Feb 22 16:07:52

Page: 1

ID:dL5YQtGh?FW2AF2a100CeOyymE6-8dJeEPOsqjD?IEvrH2XtKr9yAIAsgnKbCPHfghziYXL

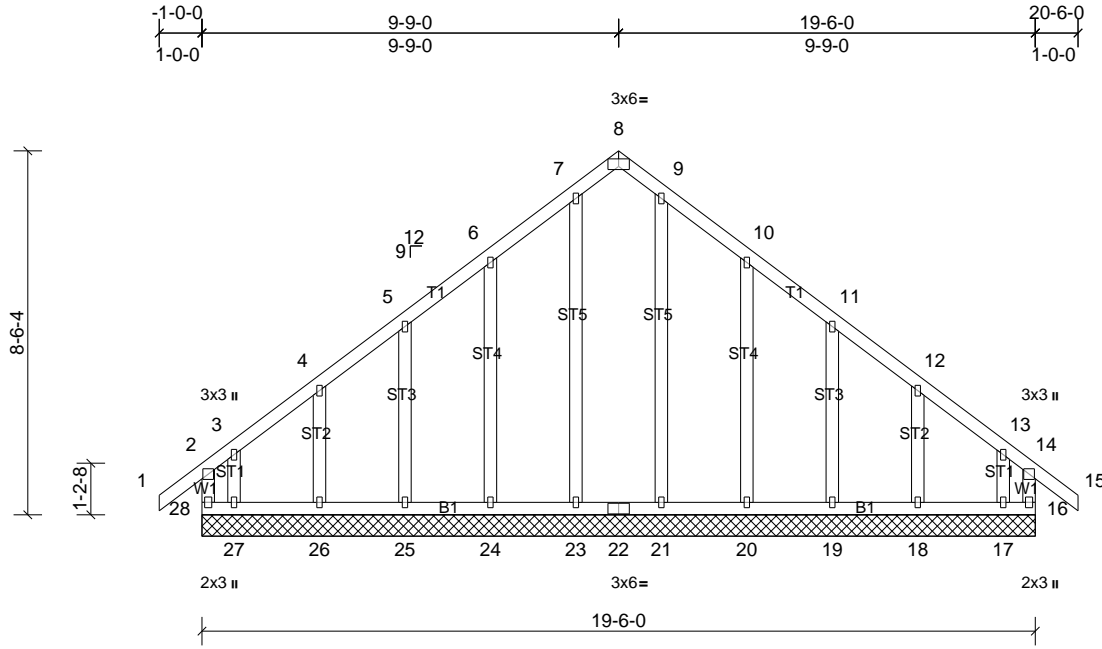


Plate Offsets (X, Y): [8:0-3-0,Edge]

Loading	(psf)	Spacing	2-0-0	CSI	DEFL	in	(loc)	l/defl	L/d	PLATES	GRIP	
TCLL (roof)	20.0	Plate Grip DOL	1.15	TC	0.22	Vert(LL)	n/a	-	n/a	999	MT20	244/190
TCDL	10.0	Lumber DOL	1.15	BC	0.13	Vert(CT)	n/a	-	n/a	999		
BCLL	0.0*	Rep Stress Incr	YES	WB	0.15	Horz(CT)	0.00	16	n/a	n/a		
BCDL	10.0	Code	IRC2015/TPI2014	Matrix-MR							Weight: 135 lb	FT = 20%

**LUMBER**  
TOP CHORD 2x4 SP No.2  
BOT CHORD 2x4 SP No.2  
WEBS 2x4 SP No.3  
OTHERS 2x4 SP No.3

**BRACING**  
TOP CHORD Structural wood sheathing directly applied or 6'-0-0 oc purlins, except end verticals.  
BOT CHORD Rigid ceiling directly applied or 10'-0-0 oc bracing.

**REACTIONS** All bearings 19'-6-0.  
(lb) - Max Horiz 28=-246 (LC 8)  
Max Uplift All uplift 100 (lb) or less at joint(s) 18, 19, 25, 26 except 16=-187 (LC 9), 17=-287 (LC 11), 20=-112 (LC 11), 24=-111 (LC 10), 27=-303 (LC 10), 28=-238 (LC 8)  
Max Grav All reactions 250 (lb) or less at joint(s) 18, 19, 20, 21, 23, 24, 25, 26 except 16=289 (LC 11), 17=259 (LC 9), 27=296 (LC 8), 28=332 (LC 7)

**FORCES** (lb) - Max. Comp./Max. Ten. - All forces 250 (lb) or less except when shown.

- NOTES**
- Unbalanced roof live loads have been considered for this design.
  - Wind: ASCE 7-10; Vult=130mph (3-second gust) Vasd=103mph; TCDL=6.0psf; BCDL=6.0psf; h=35ft; Cat. II; Exp B; Enclosed; MWFRS (envelope) exterior zone and C-C Exterior (2) zone; cantilever left and right exposed; end vertical left and right exposed; C-C for members and forces & MWFRS for reactions shown; Lumber DOL=1.60 plate grip DOL=1.60
  - Truss designed for wind loads in the plane of the truss only.
  - All plates are 1.5x3 MT20 unless otherwise indicated.
  - Gable requires continuous bottom chord bearing.
  - Truss to be fully sheathed from one face or securely braced against lateral movement (i.e. diagonal web).
  - Gable studs spaced at 2'-0-0 oc.
  - This truss has been designed for a 10.0 psf bottom chord live load nonconcurrent with any other live loads.
  - \* This truss has been designed for a live load of 20.0psf on the bottom chord in all areas where a rectangle 3'-0-0 tall by 2'-0-0 wide will fit between the bottom chord and any other members.
  - Provide mechanical connection (by others) of truss to bearing plate capable of withstanding 100 lb uplift at joint(s) 25, 26, 19, 18 except (jt=lb) 28=237, 16=187, 24=110, 27=302, 20=112, 17=286.
  - This truss is designed in accordance with the 2015 International Residential Code sections R502.11.1 and R802.10.2 and referenced standard ANSI/TPI 1.



This design is based upon parameters shown, and is for an individual building component to be installed and loaded vertically. Applicability of design parameters and proper incorporation of component is responsibility of the Building Designer. Building Designer shall verify all design information on this sheet for conformance with conditions and requirements of the specific building and governing codes and ordinances. Building Designer accepts responsibility for the correctness or accuracy of the design information as it may relate to a specific building. Certification is valid only when truss is fabricated by a UFPI plant. Bracing shown is for lateral support of truss members only and does not replace erection and permanent bracing. Refer to Building Component Safety Information (BCSI) for general guidance regarding storage, erection and bracing available from SBCA and Truss Plate Institute.



Job 72405466	Truss BL	Truss Type Truss	Qty 1	Ply 2	Professional Bldrs / Apex Craftsman RF Job Reference (optional)
-----------------	-------------	---------------------	----------	----------	--

UFP Mid Atlantic LLC, 5631 S. NC 62, Burlington, NC, r thomas

Run: 8.62 S Sep 22 2022 Print: 8.620 S Sep 22 2022 MiTek Industries, Inc. Thu Feb 22 16:07:53

Page: 1

ID:zluRTajqpn8KH0xYqZcNL4yymE1-8dJeEP0sqjD?IEvrH2XtKr9sKI?XGc4bCPHghziYXL

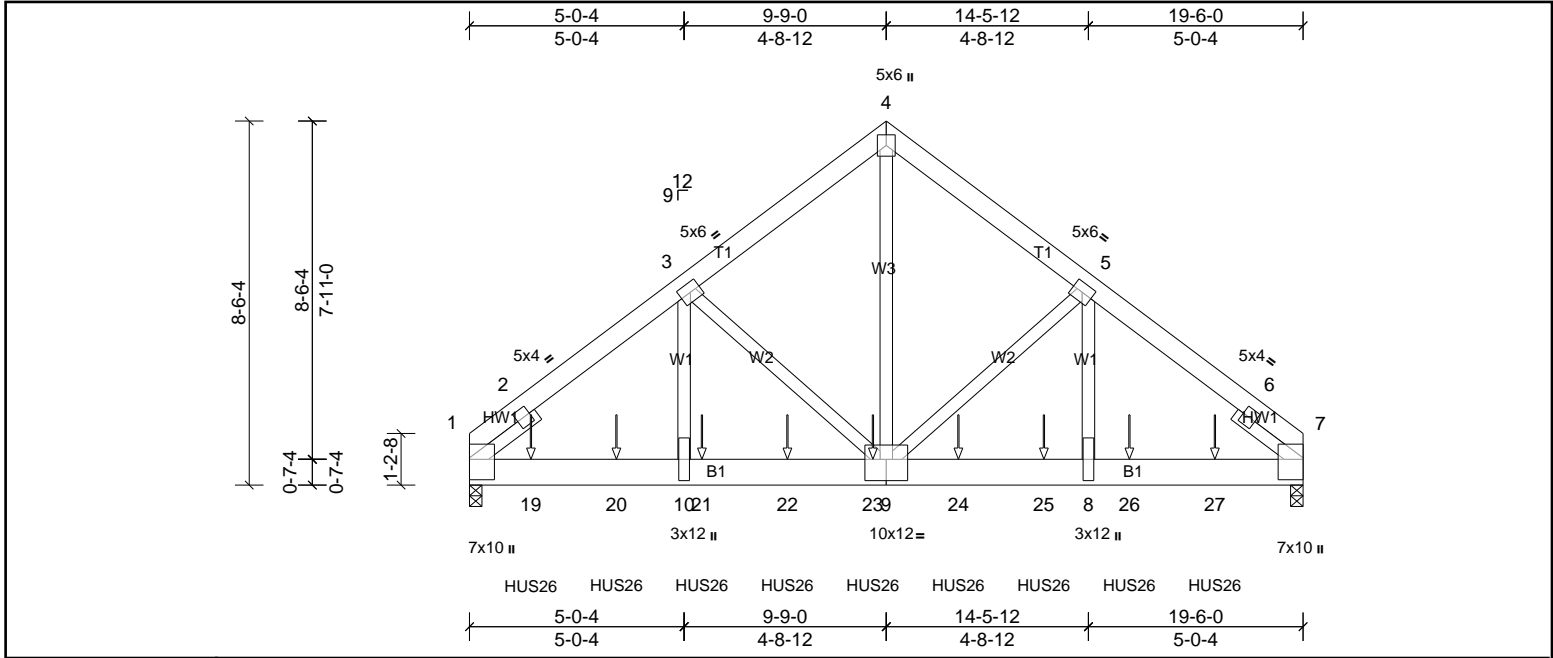


Plate Offsets (X, Y): [9:0-6-0,0-6-0]

Loading	(psf)	Spacing	2-0-0	CSI	DEFL	in	(loc)	l/defl	L/d	PLATES	GRIP	
TCLL (roof)	20.0	Plate Grip DOL	1.15	TC	0.59	Vert(LL)	-0.09	8-9	>999	240	MT20	244/190
TCDL	10.0	Lumber DOL	1.15	BC	0.86	Vert(CT)	-0.18	8-9	>999	180		
BCLL	0.0*	Rep Stress Incr	NO	WB	0.87	Horz(CT)	0.05	7	n/a	n/a		
BCDL	10.0	Code	IRC2015/TPI2014	Matrix-MSH							Weight: 329 lb	FT = 20%

LUMBER		BRACING	
TOP CHORD	2x6 SP No.2	TOP CHORD	Structural wood sheathing directly applied or 4-6-4 oc purlins.
BOT CHORD	2x8 SP No.1	BOT CHORD	Rigid ceiling directly applied or 10-0-0 oc bracing.
WEBS	2x4 SP No.3 *Except* W3:2x4 SP No.2		
SLIDER	Left 2x4 SP No.3 -- 1-11-0, Right 2x4 SP No.3 -- 1-11-0		
<b>REACTIONS</b>	(lb/size)	1=7568/0-3-8, (req. 0-4-7), 7=7147/0-3-8, (req. 0-4-3)	
	Max Horiz	1=189 (LC 24)	
	Max Uplift	1=1063 (LC 8), 7=1003 (LC 9)	
<b>FORCES</b>	(lb) - Max. Comp./Max. Ten. - All forces 250 (lb) or less except when shown.		
TOP CHORD	1-2=-6002/790, 2-3=-8607/1233, 3-4=-6375/995, 4-5=-6373/995, 5-6=-8546/1225, 6-7=-5649/771		
BOT CHORD	1-19=-1005/6697, 19-20=-1005/6697, 10-20=-1005/6697, 10-21=-1005/6697, 21-22=-1005/6697, 22-23=-1005/6697, 9-23=-1005/6697, 9-24=-896/6640, 24-25=-896/6640, 8-25=-896/6640, 8-26=-896/6640, 26-27=-896/6640, 7-27=-896/6640		
WEBS	4-9=-1046/7071, 5-9=-2123/454, 5-8=-366/2785, 3-9=-2200/464, 3-10=-375/2860		

- NOTES**
- 2-ply truss to be connected together with 10d (0.131"x3") nails as follows:  
Top chords connected as follows: 2x6 - 2 rows staggered at 0-9-0 oc.  
Bottom chords connected as follows: 2x8 - 2 rows staggered at 0-7-0 oc.  
Web connected as follows: 2x4 - 1 row at 0-9-0 oc.
  - All loads are considered equally applied to all plies, except if noted as front (F) or back (B) face in the LOAD CASE(S) section. Ply to ply connections have been provided to distribute only loads noted as (F) or (B), unless otherwise indicated.
  - Unbalanced roof live loads have been considered for this design.
  - Wind: ASCE 7-10; Vult=130mph (3-second gust) Vasd=103mph; TCDL=6.0psf; BCDL=6.0psf; h=35ft; Cat. II; Exp B; Enclosed; MWFRS (envelope) exterior zone; cantilever left and right exposed; end vertical left and right exposed; Lumber DOL=1.60 plate grip DOL=1.60
  - This truss has been designed for a 10.0 psf bottom chord live load nonconcurrent with any other live loads.
  - \* This truss has been designed for a live load of 20.0psf on the bottom chord in all areas where a rectangle 3-06-00 tall by 2-00-00 wide will fit between the bottom chord and any other members.
  - WARNING: Required bearing size at joint(s) 1, 7 greater than input bearing size.
  - Provide mechanical connection (by others) of truss to bearing plate capable of withstanding 1063 lb uplift at joint 1 and 1003 lb uplift at joint 7.
  - This truss is designed in accordance with the 2015 International Residential Code sections R502.11.1 and R802.10.2 and referenced standard ANSI/TPI 1.
  - Use Simpson Strong-Tie HUS26 (14-10d Girder, 4-10d Truss) or equivalent spaced at 2-0-0 oc max. starting at 1-5-4 from the left end to 17-5-4 to connect truss(es) to front face of bottom chord.
  - Fill all nail holes where hanger is in contact with lumber.

**LOAD CASE(S)** Standard

1) Dead + Roof Live (balanced): Lumber Increase=1.15, Plate Increase=1.15
Uniform Loads (lb/ft)
Vert: 1-4=-60, 4-7=-60, 11-15=-20
Concentrated Loads (lb)
Vert: 19=-1462 (F), 20=-1462 (F), 21=-1462 (F), 22=-1462 (F), 23=-1462 (F), 24=-1462 (F), 25=-1462 (F), 26=-1462 (F), 27=-1462 (F)



This design is based upon parameters shown, and is for an individual building component to be installed and loaded vertically. Applicability of design parameters and proper incorporation of component is responsibility of the Building Designer. Building Designer shall verify all design information on this sheet for conformance with conditions and requirements of the specific building and governing codes and ordinances. Building Designer accepts responsibility for the correctness or accuracy of the design information as it may relate to a specific building. Certification is valid only when truss is fabricated by a UFPI plant. Bracing shown is for lateral support of truss members only and does not replace erection and permanent bracing. Refer to Building Component Safety Information (BCSI) for general guidance regarding storage, erection and bracing available from SBCA and Truss Plate Institute.



Job 72405466	Truss DGV	Truss Type Truss	Qty 1	Ply 1	Professional Bldrs / Apex Craftsman RF Job Reference (optional)
-----------------	--------------	---------------------	----------	----------	--

UFPI Mid Atlantic LLC, 5631 S. NC 62, Burlington, NC, r thomas

Run: 8.62 S Sep 22 2022 Print: 8.620 S Sep 22 2022 MiTek Industries, Inc. Thu Feb 22 16:07:53

Page: 1

ID:KGhKWINzeJndNnpVc7CY27yymDy-cpt0RIOVb1LrNOU2rm36t3ip9Xu?GikR31DC7ziYXK

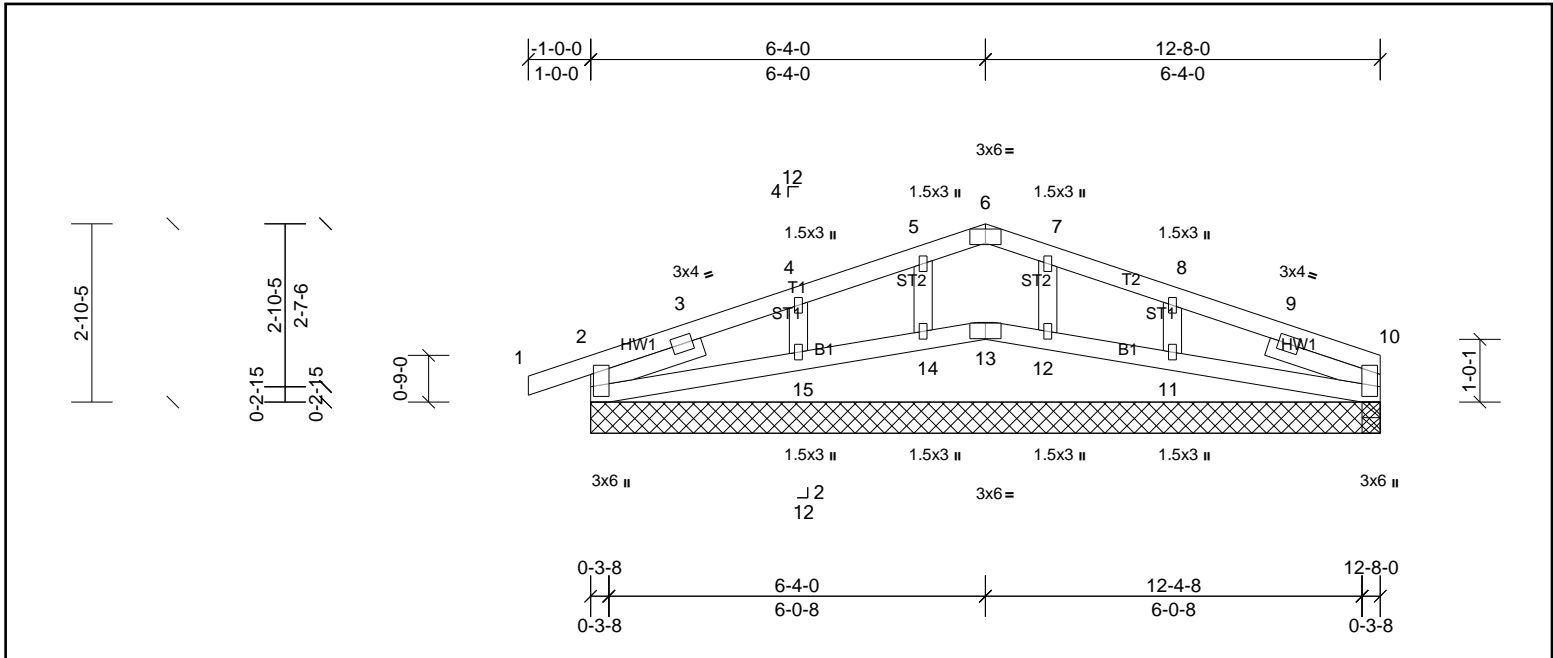


Plate Offsets (X, Y): [2:0-1-12,0-0-8], [6:0-3-0,Edge], [10:0-1-12,0-0-8]

Loading	(psf)	Spacing	2-0-0	CSI	DEFL	in	(loc)	l/defl	L/d	PLATES	GRIP	
TCLL (roof)	20.0	Plate Grip DOL	1.15	TC	0.10	Vert(LL)	0.00	11-18	>999	240	MT20	244/190
TCDL	10.0	Lumber DOL	1.15	BC	0.08	Vert(CT)	-0.01	11-18	>999	180		
BCLL	0.0*	Rep Stress Incr	YES	WB	0.04	Horz(CT)	0.00	2	n/a	n/a		
BCDL	10.0	Code	IRC2015/TPI2014	Matrix-MSH							Weight: 53 lb	FT = 20%

LUMBER	BRACING
TOP CHORD 2x4 SP No.2	TOP CHORD Structural wood sheathing directly applied or 6-0-0 oc purlins.
BOT CHORD 2x4 SP No.2	BOT CHORD Rigid ceiling directly applied or 10-0-0 oc bracing.
OTHERS 2x4 SP No.3	
SLIDER Left 2x4 SP No.3 -- 1-11-0, Right 2x4 SP No.3 -- 1-11-0	

**REACTIONS** All bearings 12-8-0.  
 (lb) - Max Horiz 2=48 (LC 14), 20=48 (LC 14)  
 Max Uplift All uplift 100 (lb) or less at joint(s) 2, 10, 11, 12, 14, 15, 16, 20  
 Max Grav All reactions 250 (lb) or less at joint(s) 2, 10, 12, 13, 14, 15, 16, 20 except 11=260 (LC 22)

**FORCES** (lb) - Max. Comp./Max. Ten. - All forces 250 (lb) or less except when shown.

- NOTES**
- Unbalanced roof live loads have been considered for this design.
  - Wind: ASCE 7-10; Vult=130mph (3-second gust) Vasd=103mph; TCCL=6.0psf; BCDL=6.0psf; h=35ft; Cat. II; Exp B; Enclosed; MWFRS (envelope) exterior zone and C-C Exterior (2) zone; cantilever left and right exposed; end vertical left and right exposed; C-C for members and forces & MWFRS for reactions shown; Lumber DOL=1.60 plate grip DOL=1.60
  - Truss designed for wind loads in the plane of the truss only.
  - All plates are 1.5x3 MT20 unless otherwise indicated.
  - Gable studs spaced at 2-0-0 oc.
  - This truss has been designed for a 10.0 psf bottom chord live load nonconcurrent with any other live loads.
  - \* This truss has been designed for a live load of 20.0psf on the bottom chord in all areas where a rectangle 3-06-00 tall by 2-00-00 wide will fit between the bottom chord and any other members.
  - Provide mechanical connection (by others) of truss to bearing plate capable of withstanding 100 lb uplift at joint(s) 10, 2, 14, 12, 15, 11, 10, 2.
  - This truss is designed in accordance with the 2015 International Residential Code sections R502.11.1 and R802.10.2 and referenced standard ANSI/TPI 1.





Job 72405466	Truss DV	Truss Type Truss	Qty 5	Ply 1	Professional Bldrs / Apex Craftsman RF Job Reference (optional)
-----------------	-------------	---------------------	----------	----------	--

UFP Mid Atlantic LLC, 5631 S. NC 62, Burlington, NC, r thomas

Run: 8.620 S Sep 22 2022 Print: 8.620 S Sep 22 2022 MiTek Industries, Inc. Thu Feb 22 16:07:53

Page: 1

ID:Gep4xzPDAx1Ld5zukYE07YymDw-cpt0RIOVb1LrNOU2m36t3i409Ry?E2kr31DC7ziYXK

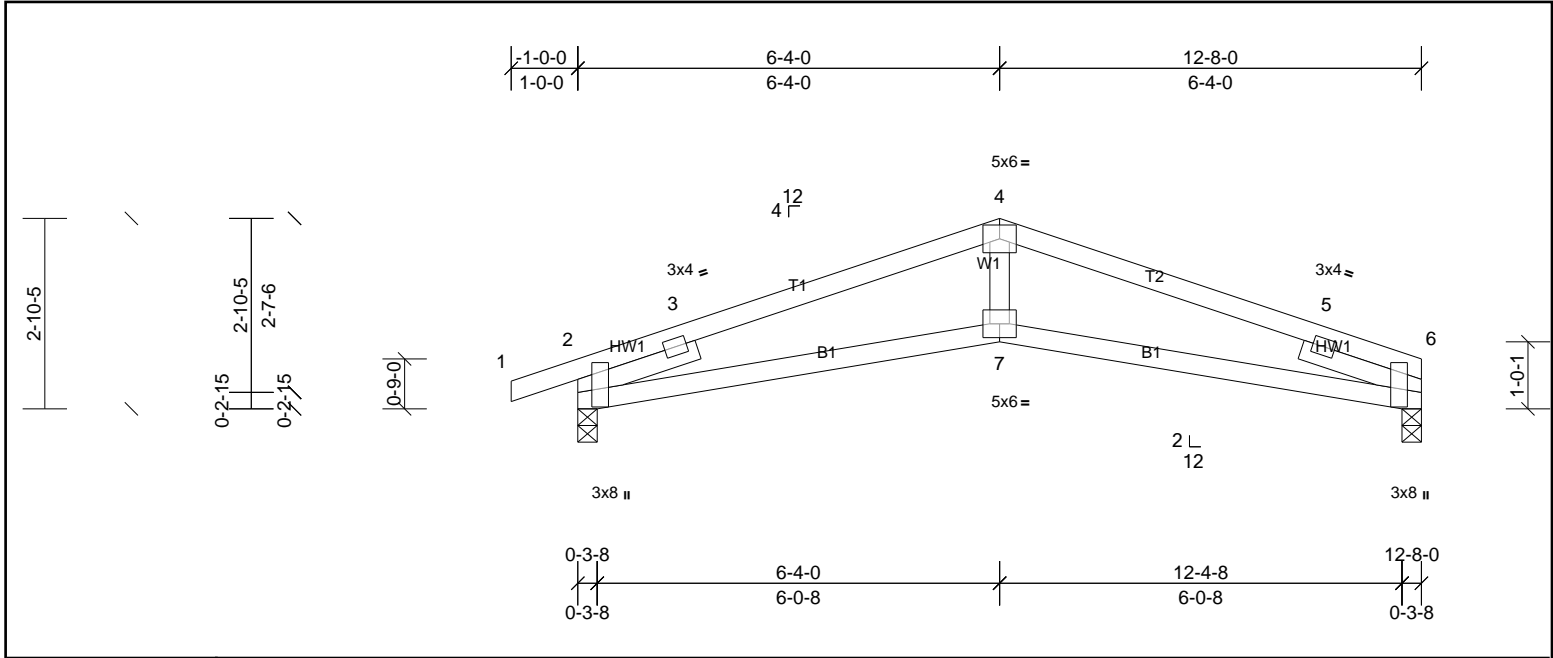


Plate Offsets (X, Y): [2:0-5-0,Edge], [6:0-2-10,Edge]

Loading	(psf)	Spacing	2-0-0	CSI	DEFL	in	(loc)	l/defl	L/d	PLATES	GRIP	
TCLL (roof)	20.0	Plate Grip DOL	1.15	TC	0.40	Vert(LL)	-0.05	7-10	>999	240	MT20	244/190
TCDL	10.0	Lumber DOL	1.15	BC	0.46	Vert(CT)	-0.10	7-10	>999	180		
BCLL	0.0*	Rep Stress Incr	YES	WB	0.18	Horz(CT)	0.04	6	n/a	n/a		
BCDL	10.0	Code	IRC2015/TPI2014	Matrix-MSH							Weight: 49 lb	FT = 20%

LUMBER	BRACING
TOP CHORD 2x4 SP No.2	TOP CHORD Structural wood sheathing directly applied or 4-10-12 oc purlins.
BOT CHORD 2x4 SP No.2	BOT CHORD Rigid ceiling directly applied or 10-0-0 oc bracing.
WEBS 2x4 SP No.3	
SLIDER Left 2x4 SP No.3 -- 1-11-0, Right 2x4 SP No.3 -- 1-11-0	
<b>REACTIONS</b>	
(lb/size) 2=569/0-3-8, (min. 0-1-8), 6=504/0-3-8, (min. 0-1-8)	
Max Horiz 2=48 (LC 14)	
Max Uplift 2=123 (LC 6), 6=80 (LC 7)	
<b>FORCES</b>	
(lb) - Max. Comp./Max. Ten. - All forces 250 (lb) or less except when shown.	
TOP CHORD 2-3=-407/0, 3-4=-1159/365, 4-5=-1110/365, 5-6=-384/0	
BOT CHORD 2-7=-285/1072, 6-7=-285/1073	
WEBS 4-7=-40/452	

- NOTES**
- Unbalanced roof live loads have been considered for this design.
  - Wind: ASCE 7-10; Vult=130mph (3-second gust) Vasd=103mph; TCCL=6.0psf; BCDL=6.0psf; h=35ft; Cat. II; Exp B; Enclosed; MWFRS (envelope) exterior zone and C-C Exterior (2) zone; cantilever left and right exposed; end vertical left and right exposed; C-C for members and forces & MWFRS for reactions shown; Lumber DOL=1.60 plate grip DOL=1.60
  - This truss has been designed for a 10.0 psf bottom chord live load nonconcurrent with any other live loads.
  - \* This truss has been designed for a live load of 20.0psf on the bottom chord in all areas where a rectangle 3-06-00 tall by 2-00-00 wide will fit between the bottom chord and any other members.
  - Bearing at joint(s) 6, 2 considers parallel to grain value using ANSI/TPI 1 angle to grain formula. Building designer should verify capacity of bearing surface.
  - Provide mechanical connection (by others) of truss to bearing plate capable of withstanding 80 lb uplift at joint 6 and 123 lb uplift at joint 2.
  - This truss is designed in accordance with the 2015 International Residential Code sections R502.11.1 and R802.10.2 and referenced standard ANSI/TPI 1.



This design is based upon parameters shown, and is for an individual building component to be installed and loaded vertically. Applicability of design parameters and proper incorporation of component is responsibility of the Building Designer. Building Designer shall verify all design information on this sheet for conformance with conditions and requirements of the specific building and governing codes and ordinances. Building Designer accepts responsibility for the correctness or accuracy of the design information as it may relate to a specific building. Certification is valid only when truss is fabricated by a UFPI plant. Bracing shown is for lateral support of truss members only and does not replace erection and permanent bracing. Refer to Building Component Safety Information (BCSI) for general guidance regarding storage, erection and bracing available from SBCA and Truss Plate Institute.



Job 72405466	Truss E2	Truss Type Truss	Qty 1	Ply 2	Professional Bldrs / Apex Craftsman RF Job Reference (optional)
-----------------	-------------	---------------------	----------	----------	--

UFP Mid Atlantic LLC, 5631 S. NC 62, Burlington, NC, r thomas

Run: 8.62 S Sep 22 2022 Print: 8.620 S Sep 22 2022 MiTek Industries, Inc. Thu Feb 22 16:07:53

Page: 1

ID:tHzXSRaHEURcTDQncbeK6\_yyUif-cpt0RIOVb1LrNOU2rm36t3i6j9P2?DrkR31DC7ziYXK

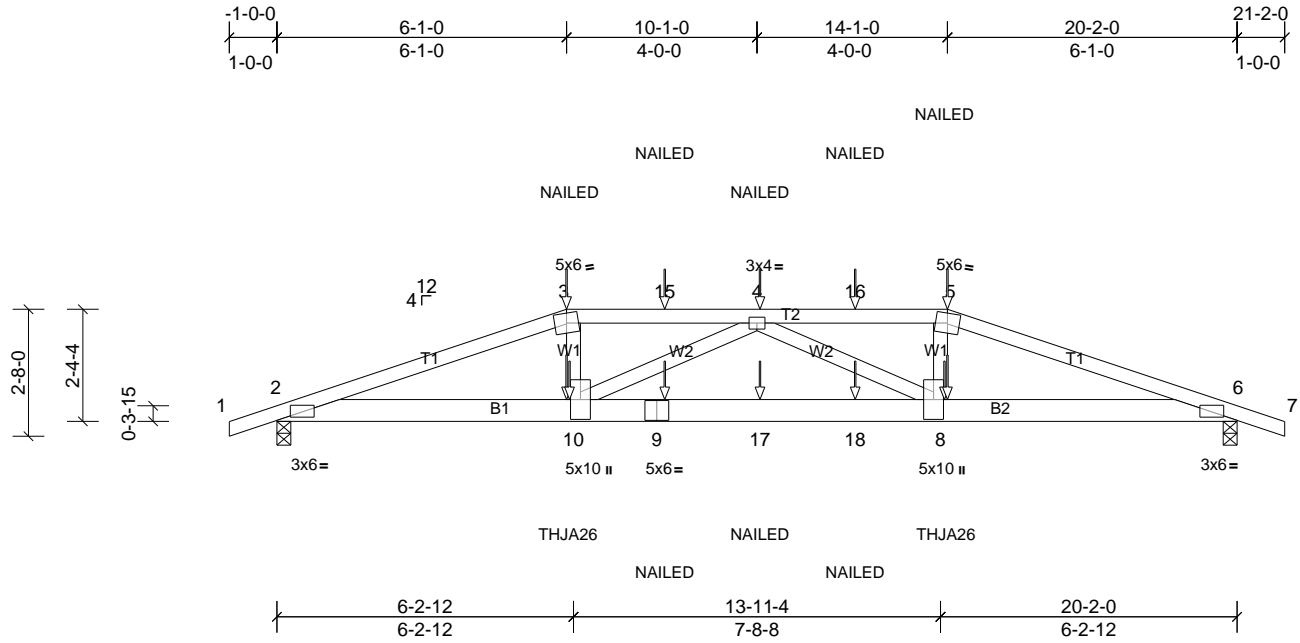


Plate Offsets (X, Y): [2:0-3-6,0-0-13], [6:0-3-6,0-0-13]

Loading	(psf)	Spacing	2-0-0	CSI	DEFLL	in	(loc)	l/defl	L/d	PLATES	GRIP	
TCLL (roof)	20.0	Plate Grip DOL	1.15	TC	0.30	Vert(LL)	-0.10	8-10	>999	240	MT20	244/190
TCDL	10.0	Lumber DOL	1.15	BC	0.58	Vert(CT)	-0.21	8-10	>999	180		
BCLL	0.0*	Rep Stress Incr	NO	WB	0.19	Horz(CT)	0.04	6	n/a	n/a		
BCDL	10.0	Code	IRC2015/TPI2014	Matrix-MSH							Weight: 197 lb	FT = 20%

LUMBER	BRACING
TOP CHORD 2x4 SP No.2	TOP CHORD Structural wood sheathing directly applied or 5-10-13 oc purlins, except 2-0-0 oc purlins (6-0-0 max.): 3-5.
BOT CHORD 2x6 SP No.2	BOT CHORD Rigid ceiling directly applied or 10-0-0 oc bracing.
WEBS 2x4 SP No.3	

**REACTIONS** (lb/size) 2=1605/0-3-8, (min. 0-1-8), 6=1606/0-3-8, (min. 0-1-8)  
 Max Horiz 2=41 (LC 25)  
 Max Uplift 2=348 (LC 4), 6=348 (LC 5)

**FORCES** (lb) - Max. Comp./Max. Ten. - All forces 250 (lb) or less except when shown.  
 TOP CHORD 2-3=-4190/764, 3-15=-3997/751, 4-15=-3997/751, 4-16=-4001/753, 5-16=-4001/753, 5-6=-4195/765  
 BOT CHORD 2-10=-684/3928, 9-10=-884/4459, 9-17=-884/4459, 17-18=-884/4459, 8-18=-884/4459, 6-8=-648/3932  
 WEBS 3-10=-68/942, 5-8=-67/940, 4-10=-613/274, 4-8=-608/272

- NOTES**
- 2-ply truss to be connected together with 10d (0.131"x3") nails as follows:  
 Top chords connected as follows: 2x4 - 1 row at 0-9-0 oc.  
 Bottom chords connected as follows: 2x6 - 2 rows staggered at 0-9-0 oc.  
 Web connected as follows: 2x4 - 1 row at 0-6-0 oc, Except member 4-10 2x4 - 1 row at 0-9-0 oc, Except member 4-8 2x4 - 1 row at 0-9-0 oc.
  - All loads are considered equally applied to all plies, except if noted as front (F) or back (B) face in the LOAD CASE(S) section. Ply to ply connections have been provided to distribute only loads noted as (F) or (B), unless otherwise indicated.
  - Unbalanced roof live loads have been considered for this design.
  - Wind: ASCE 7-10; Vult=130mph (3-second gust) Vasd=103mph; TCDDL=6.0psf; BCDL=6.0psf; h=35ft; Cat. II; Exp B; Enclosed; MWFRS (envelope) exterior zone; cantilever left and right exposed; end vertical left and right exposed; Lumber DOL=1.60 plate grip DOL=1.60
  - Provide adequate drainage to prevent water ponding.
  - This truss has been designed for a 10.0 psf bottom chord live load nonconcurrent with any other live loads.
  - \* This truss has been designed for a live load of 20.0psf on the bottom chord in all areas where a rectangle 3-06-00 tall by 2-00-00 wide will fit between the bottom chord and any other members.
  - Provide mechanical connection (by others) of truss to bearing plate capable of withstanding 348 lb uplift at joint 2 and 348 lb uplift at joint 6.
  - This truss is designed in accordance with the 2015 International Residential Code sections R502.11.1 and R802.10.2 and referenced standard ANSI/TPI 1.
  - Graphical purlin representation does not depict the size or the orientation of the purlin along the top and/or bottom chord.
  - Use Simpson Strong-Tie THJA26 (THJA26 on 2 ply, Right Hand Hip) or equivalent at 6-1-6 from the left end to connect truss(es) to back face of bottom chord.
  - Use Simpson Strong-Tie THJA26 (THJA26 on 2 ply, Left Hand Hip) or equivalent at 14-0-10 from the left end to connect truss(es) to back face of bottom chord.
  - Fill all nail holes where hanger is in contact with lumber.
  - "NAILED" indicates 3-10d (0.148"x3") or 3-12d (0.148"x3.25") toe-nails per NDS guidelines.

**LOAD CASE(S)** Standard

1) Dead + Roof Live (balanced): Lumber Increase=1.15, Plate Increase=1.15  
 Uniform Loads (lb/ft)  
 Vert: 1-3=-60, 3-5=-60, 5-7=-60, 2-6=-20  
 Concentrated Loads (lb)  
 Vert: 3=-96 (B), 5=-96 (B), 9=-59 (B), 10=-411 (B), 8=-411 (B), 4=-96 (B), 15=-96 (B), 16=-96 (B), 17=-59 (B), 18=-59 (B)



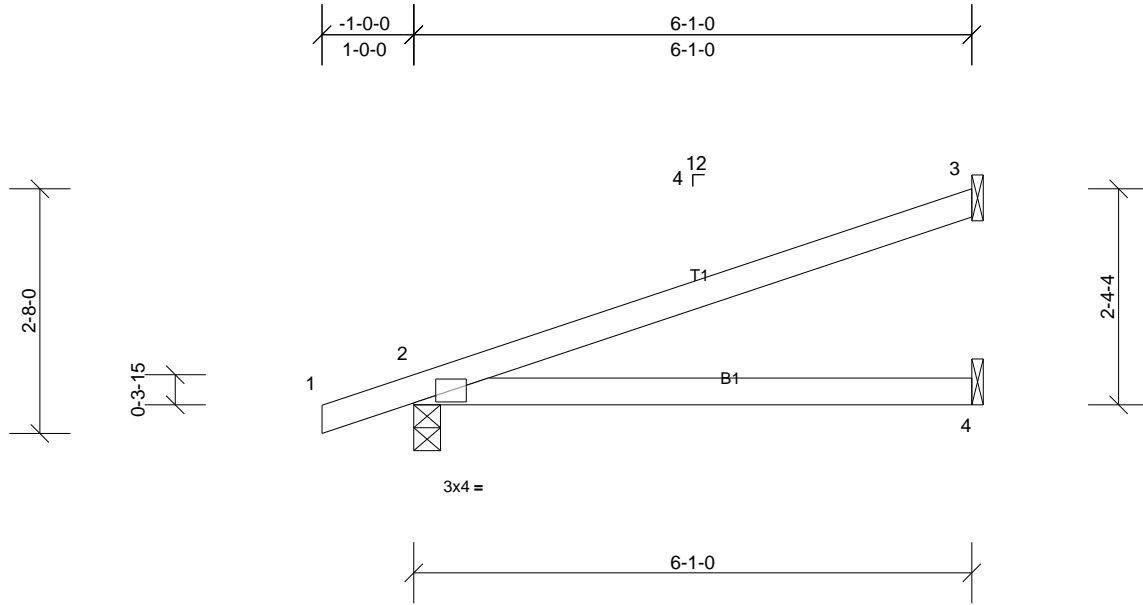
Job 72405466	Truss J	Truss Type Truss	Qty 5	Ply 1	Professional Bldrs / Apex Craftsman RF Job Reference (optional)
-----------------	------------	---------------------	----------	----------	--

UFP Mid Atlantic LLC, 5631 S. NC 62, Burlington, NC, r thomas

Run: 8.620 S Sep 22 2022 Print: 8.620 S Sep 22 2022 MiTek Industries, Inc. Thu Feb 22 16:07:54

Page: 1

ID:RY3\_HvUVznmKlrl3yvvezgyUkQ-40ROf5P7MLTI?X3EPTaLPGEDiZofkj7ufjmmkaziYXJ



Loading	(psf)	Spacing	2-0-0	CSI	DEFL	in	(loc)	l/defl	L/d	PLATES	GRIP	
TCLL (roof)	20.0	Plate Grip DOL	1.15	TC	0.54	Vert(LL)	0.07	4-7	>999	240	MT20	244/190
TCDL	10.0	Lumber DOL	1.15	BC	0.43	Vert(CT)	-0.14	4-7	>534	180		
BCLL	0.0*	Rep Stress Incr	YES	WB	0.00	Horz(CT)	0.00	2	n/a	n/a		
BCDL	10.0	Code	IRC2015/TPI2014	Matrix-MSH							Weight: 20 lb	FT = 20%

**LUMBER**

TOP CHORD 2x4 SP No.2  
BOT CHORD 2x4 SP No.2

**BRACING**

TOP CHORD Structural wood sheathing directly applied or 6-1-0 oc purlins.  
BOT CHORD Rigid ceiling directly applied or 10-0-0 oc bracing.

**REACTIONS**

(lb/size) 2=306/0-3-8, (min. 0-1-8), 3=156/ Mechanical, (min. 0-1-8), 4=79/  
Mechanical, (min. 0-1-8)  
Max Horiz 2=99 (LC 6)  
Max Uplift 2=81 (LC 6), 3=75 (LC 10)  
Max Grav 2=306 (LC 1), 3=156 (LC 1), 4=110 (LC 3)

**FORCES**

(lb) - Max. Comp./Max. Ten. - All forces 250 (lb) or less except when shown.

**NOTES**

- 1) Wind: ASCE 7-10; Vult=130mph (3-second gust) Vasd=103mph; TCCL=6.0psf; BCDL=6.0psf; h=35ft; Cat. II; Exp B; Enclosed; MWFRS (envelope) exterior zone and C-C Exterior (2) zone; cantilever left and right exposed ; end vertical left and right exposed; C-C for members and forces & MWFRS for reactions shown; Lumber DOL=1.60 plate grip DOL=1.60
- 2) This truss has been designed for a 10.0 psf bottom chord live load nonconcurrent with any other live loads.
- 3) \* This truss has been designed for a live load of 20.0psf on the bottom chord in all areas where a rectangle 3-06-00 tall by 2-00-00 wide will fit between the bottom chord and any other members.
- 4) Provide mechanical connection (by others) of truss to bearing plate capable of withstanding 75 lb uplift at joint 3 and 81 lb uplift at joint 2.
- 5) This truss is designed in accordance with the 2015 International Residential Code sections R502.11.1 and R802.10.2 and referenced standard ANSI/TPI 1.



This design is based upon parameters shown, and is for an individual building component to be installed and loaded vertically. Applicability of design parameters and proper incorporation of component is responsibility of the Building Designer. Building Designer shall verify all design information on this sheet for conformance with conditions and requirements of the specific building and governing codes and ordinances. Building Designer accepts responsibility for the correctness or accuracy of the design information as it may relate to a specific building. Certification is valid only when truss is fabricated by a UFPI plant. Bracing shown is for lateral support of truss members only and does not replace erection and permanent bracing. Refer to Building Component Safety Information (BCSI) for general guidance regarding storage, erection and bracing available from SBCA and Truss Plate Institute.



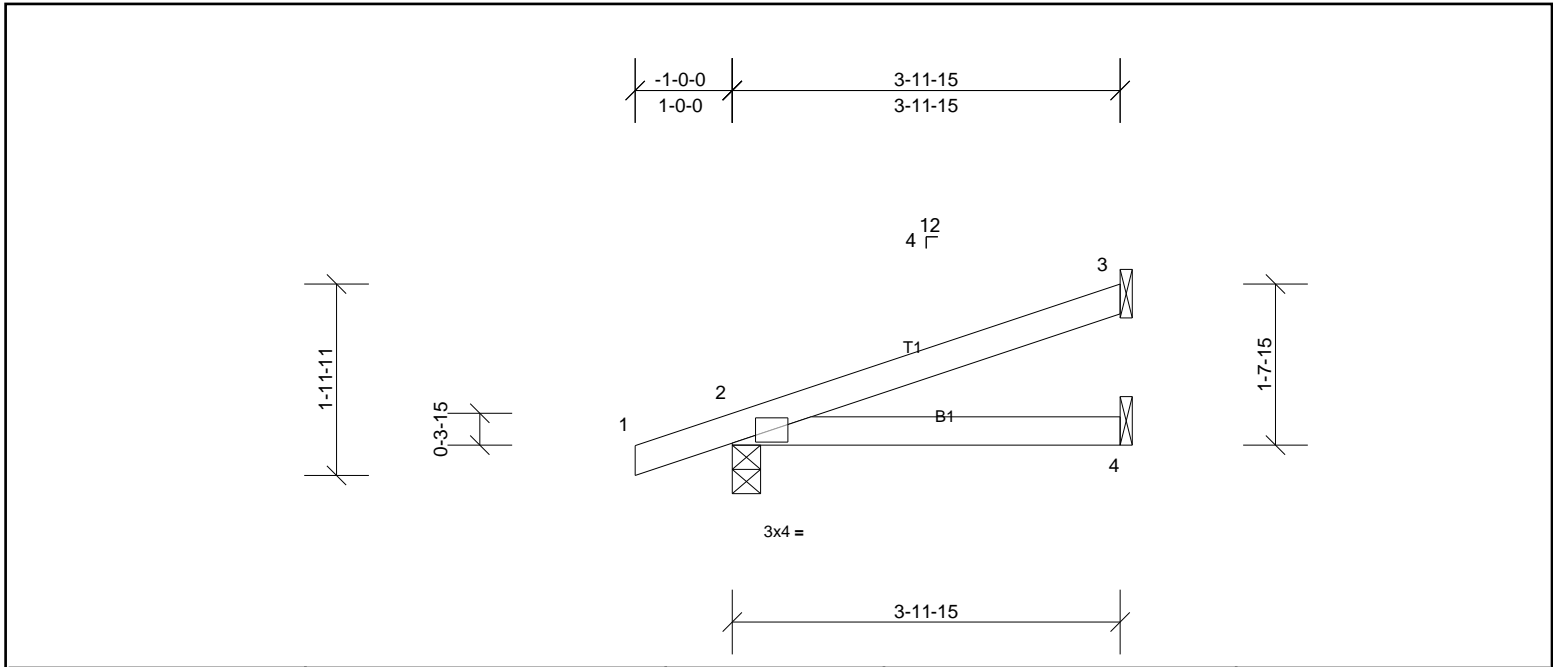
Job 72405466	Truss J1	Truss Type Truss	Qty 4	Ply 1	Professional Bldrs / Apex Craftsman RF Job Reference (optional)
-----------------	-------------	---------------------	----------	----------	--

UFP Mid Atlantic LLC, 5631 S. NC 62, Burlington, NC, r thomas

Run: 8.62 S Sep 22 2022 Print: 8.620 S Sep 22 2022 MiTek Industries, Inc. Thu Feb 22 16:07:54

Page: 1

ID:NxBkibWIVOA2Y9SR4JhC35yyUkO-40ROf5P7MLT1?X3EPTaLPGEI3Zslkj7ufjmmkaziYXJ



Loading	(psf)	Spacing	2-0-0	CSI	DEFL	in	(loc)	l/defl	L/d	PLATES	GRIP	
TCLL (roof)	20.0	Plate Grip DOL	1.15	TC	0.19	Vert(LL)	0.01	4-7	>999	240	MT20	244/190
TCDL	10.0	Lumber DOL	1.15	BC	0.17	Vert(CT)	-0.02	4-7	>999	180		
BCLL	0.0*	Rep Stress Incr	YES	WB	0.00	Horz(CT)	0.00	2	n/a	n/a		
BCDL	10.0	Code	IRC2015/TPI2014	Matrix-MP							Weight: 14 lb	FT = 20%

LUMBER		BRACING	
TOP CHORD	2x4 SP No.2	TOP CHORD	Structural wood sheathing directly applied or 3-11-15 oc purlins.
BOT CHORD	2x4 SP No.2	BOT CHORD	Rigid ceiling directly applied or 10-0-0 oc bracing.
<b>REACTIONS</b>	(lb/size)	2=225/0-3-8, (min. 0-1-8), 3=98/ Mechanical, (min. 0-1-8), 4=52/ Mechanical, (min. 0-1-8)	
	Max Horiz	2=71 (LC 6)	
	Max Uplift	2=-71 (LC 6), 3=-46 (LC 10)	
	Max Grav	2=225 (LC 1), 3=98 (LC 1), 4=70 (LC 3)	

**FORCES** (lb) - Max. Comp./Max. Ten. - All forces 250 (lb) or less except when shown.

- NOTES**
- 1) Wind: ASCE 7-10; Vult=130mph (3-second gust) Vasd=103mph; TC DL=6.0psf; BC DL=6.0psf; h=35ft; Cat. II; Exp B; Enclosed; MWFRS (envelope) exterior zone and C-C Exterior (2) zone; cantilever left and right exposed; end vertical left and right exposed; C-C for members and forces & MWFRS for reactions shown; Lumber DOL=1.60 plate grip DOL=1.60
  - 2) This truss has been designed for a 10.0 psf bottom chord live load nonconcurrent with any other live loads.
  - 3) \* This truss has been designed for a live load of 20.0psf on the bottom chord in all areas where a rectangle 3-06-00 tall by 2-00-00 wide will fit between the bottom chord and any other members.
  - 4) Provide mechanical connection (by others) of truss to bearing plate capable of withstanding 46 lb uplift at joint 3 and 71 lb uplift at joint 2.
  - 5) This truss is designed in accordance with the 2015 International Residential Code sections R502.11.1 and R802.10.2 and referenced standard ANSI/TPI 1.



This design is based upon parameters shown, and is for an individual building component to be installed and loaded vertically. Applicability of design parameters and proper incorporation of component is responsibility of the Building Designer. Building Designer shall verify all design information on this sheet for conformance with conditions and requirements of the specific building and governing codes and ordinances. Building Designer accepts responsibility for the correctness or accuracy of the design information as it may relate to a specific building. Certification is valid only when truss is fabricated by a UFPI plant. Bracing shown is for lateral support of truss members only and does not replace erection and permanent bracing. Refer to Building Component Safety Information (BCSI) for general guidance regarding storage, erection and bracing available from SBCA and Truss Plate Institute.



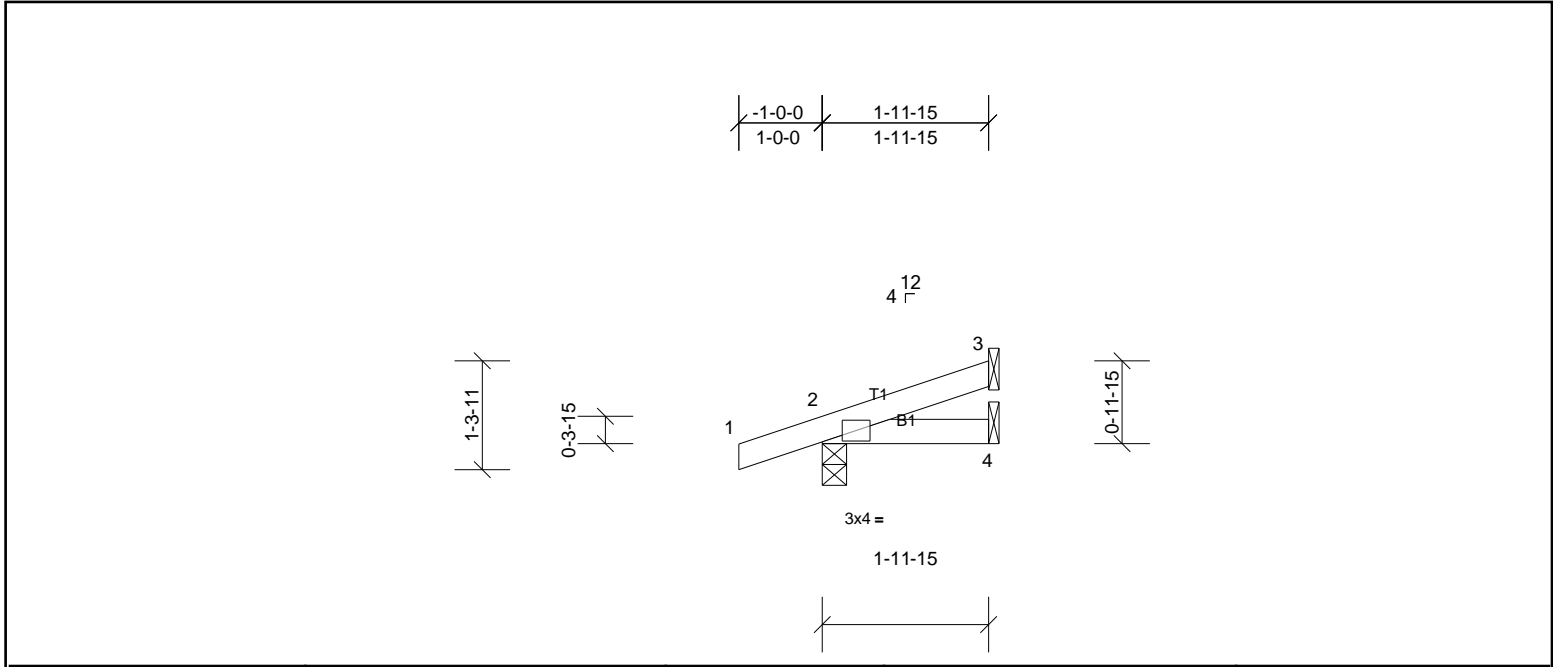
Job 72405466	Truss J2	Truss Type Truss	Qty 4	Ply 1	Professional Bldrs / Apex Craftsman RF Job Reference (optional)
-----------------	-------------	---------------------	----------	----------	--

UFP Mid Atlantic LLC, 5631 S. NC 62, Burlington, NC, r thomas

Run: 8.62 S Sep 22 2022 Print: 8.620 S Sep 22 2022 MiTek Industries, Inc. Thu Feb 22 16:07:54

Page: 1

ID:oWttKdYdnJYcPdB0ISEvgjyyUkL-40ROf5P7MLT?X3EPTaLPGEK2Zuwkj7ufjmmkaziYXJ



Loading	(psf)	Spacing	2-0-0	CSI	DEFL	in	(loc)	l/defl	L/d	PLATES	GRIP	
TCLL (roof)	20.0	Plate Grip DOL	1.15	TC	0.07	Vert(LL)	0.00	7	>999	240	MT20	244/190
TCDL	10.0	Lumber DOL	1.15	BC	0.03	Vert(CT)	0.00	4-7	>999	180		
BCLL	0.0*	Rep Stress Incr	YES	WB	0.00	Horz(CT)	0.00	3	n/a	n/a		
BCDL	10.0	Code	IRC2015/TPI2014	Matrix-MP							Weight: 8 lb	FT = 20%

LUMBER		BRACING	
TOP CHORD	2x4 SP No.2	TOP CHORD	Structural wood sheathing directly applied or 1-11-15 oc purlins.
BOT CHORD	2x4 SP No.2	BOT CHORD	Rigid ceiling directly applied or 10-0-0 oc bracing.
<b>REACTIONS</b>	(lb/size)	2=154/0-3-8, (min. 0-1-8), 3=41/ Mechanical, (min. 0-1-8), 4=23/ Mechanical, (min. 0-1-8)	
	Max Horiz	2=45 (LC 6)	
	Max Uplift	2=65 (LC 6), 3=-18 (LC 10)	
	Max Grav	2=154 (LC 1), 3=41 (LC 1), 4=32 (LC 3)	

**FORCES** (lb) - Max. Comp./Max. Ten. - All forces 250 (lb) or less except when shown.

- NOTES**
- 1) Wind: ASCE 7-10; Vult=130mph (3-second gust) Vasd=103mph; TCCL=6.0psf; BCCL=6.0psf; h=35ft; Cat. II; Exp B; Enclosed; MWFRS (envelope) exterior zone and C-C Exterior (2) zone; cantilever left and right exposed ; end vertical left and right exposed; C-C for members and forces & MWFRS for reactions shown; Lumber DOL=1.60 plate grip DOL=1.60
  - 2) This truss has been designed for a 10.0 psf bottom chord live load nonconcurrent with any other live loads.
  - 3) \* This truss has been designed for a live load of 20.0psf on the bottom chord in all areas where a rectangle 3-06-00 tall by 2-00-00 wide will fit between the bottom chord and any other members.
  - 4) Provide mechanical connection (by others) of truss to bearing plate capable of withstanding 18 lb uplift at joint 3 and 65 lb uplift at joint 2.
  - 5) This truss is designed in accordance with the 2015 International Residential Code sections R502.11.1 and R802.10.2 and referenced standard ANSI/TPI 1.



This design is based upon parameters shown, and is for an individual building component to be installed and loaded vertically. Applicability of design parameters and proper incorporation of component is responsibility of the Building Designer. Building Designer shall verify all design information on this sheet for conformance with conditions and requirements of the specific building and governing codes and ordinances. Building Designer accepts responsibility for the correctness or accuracy of the design information as it may relate to a specific building. Certification is valid only when truss is fabricated by a UFPI plant. Bracing shown is for lateral support of truss members only and does not replace erection and permanent bracing. Refer to Building Component Safety Information (BCSI) for general guidance regarding storage, erection and bracing available from SBCA and Truss Plate Institute.





Job 72405466	Truss KJ	Truss Type Truss	Qty 2	Ply 1	Professional Bldrs / Apex Craftsman RF Job Reference (optional)
-----------------	-------------	---------------------	----------	----------	--

UFP Mid Atlantic LLC, 5631 S. NC 62, Burlington, NC, r thomas

Run: 8.62 S Sep 22 2022 Print: 8.620 S Sep 22 2022 MiTek Industries, Inc. Thu Feb 22 16:07:54

Page: 1

ID:C4Y?zfbW4EwBG4vbQaoclMyyUkl-40ROf5P7MLTi?X3EPTaLPG6mZhBkj7ufjmmkaziYXJ

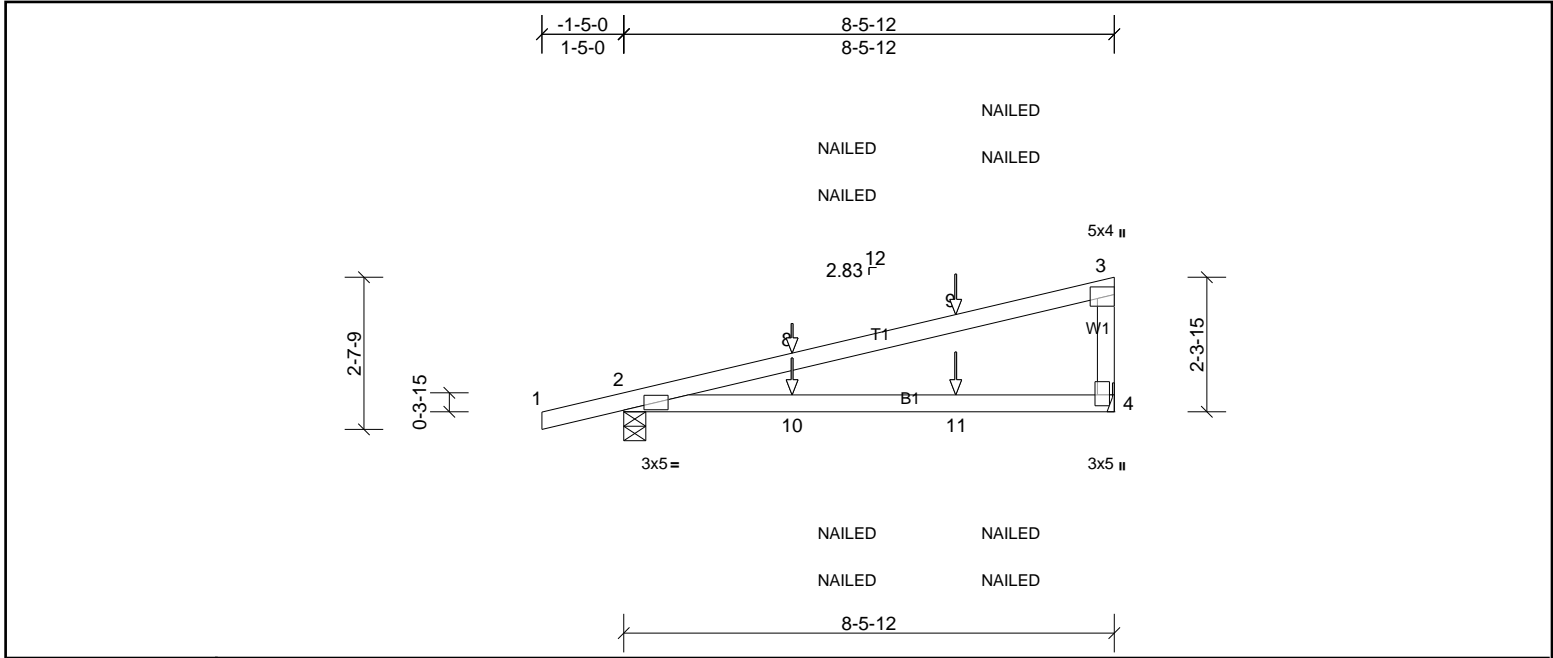


Plate Offsets (X, Y): [4:0-2-4,0-0-8]

Loading	(psf)	Spacing	2-0-0	CSI	DEFL	in	(loc)	l/defl	L/d	PLATES	GRIP	
TCLL (roof)	20.0	Plate Grip DOL	1.15	TC	0.98	Vert(LL)	-0.17	4-7	>582	240	MT20	244/190
TCDL	10.0	Lumber DOL	1.15	BC	0.84	Vert(CT)	-0.38	4-7	>261	180		
BCLL	0.0*	Rep Stress Incr	NO	WB	0.00	Horz(CT)	0.01	2	n/a	n/a		
BCDL	10.0	Code	IRC2015/TPI2014	Matrix-MSH							Weight: 30 lb	FT = 20%

LUMBER		BRACING	
TOP CHORD	2x4 SP No.1	TOP CHORD	Structural wood sheathing directly applied or 6-0-0 oc purlins, except end verticals.
BOT CHORD	2x4 SP No.2	BOT CHORD	Rigid ceiling directly applied or 10-0-0 oc bracing.
WEBS	2x4 SP No.3		

REACTIONS	(lb/size)	2=455/0-4-9, (min. 0-1-8), 4=380/ Mechanical, (min. 0-1-8)
	Max Horiz	2=97 (LC 19)
	Max Uplift	2=123 (LC 4), 4=74 (LC 8)

FORCES	(lb) - Max. Comp./Max. Ten. - All forces 250 (lb) or less except when shown.
TOP CHORD	2-8=-268/3

- NOTES**
- 1) Wind: ASCE 7-10; Vult=130mph (3-second gust) Vasd=103mph; TCDL=6.0psf; BCDL=6.0psf; h=35ft; Cat. II; Exp B; Enclosed; MWFRS (envelope) exterior zone; cantilever left and right exposed; end vertical left exposed; Lumber DOL=1.60 plate grip DOL=1.60
  - 2) This truss has been designed for a 10.0 psf bottom chord live load nonconcurrent with any other live loads.
  - 3) \* This truss has been designed for a live load of 20.0psf on the bottom chord in all areas where a rectangle 3-06-00 tall by 2-00-00 wide will fit between the bottom chord and any other members.
  - 4) Provide mechanical connection (by others) of truss to bearing plate capable of withstanding 74 lb uplift at joint 4 and 123 lb uplift at joint 2.
  - 5) This truss is designed in accordance with the 2015 International Residential Code sections R502.11.1 and R802.10.2 and referenced standard ANSI/TPI 1.
  - 6) "NAILED" indicates Girder: 3-10d (0.148" x 3") toe-nails per NDS guidelines.
  - 7) In the LOAD CASE(S) section, loads applied to the face of the truss are noted as front (F) or back (B).

LOAD CASE(S)	Standard
1)	Dead + Roof Live (balanced): Lumber Increase=1.15, Plate Increase=1.15
	Uniform Loads (lb/ft)
	Vert: 1-3=-60, 4-5=-20
	Concentrated Loads (lb)
	Vert: 9=-26 (F=-13, B=-13), 10=-11 (F=-6, B=-6), 11=-47 (F=-23, B=-23)



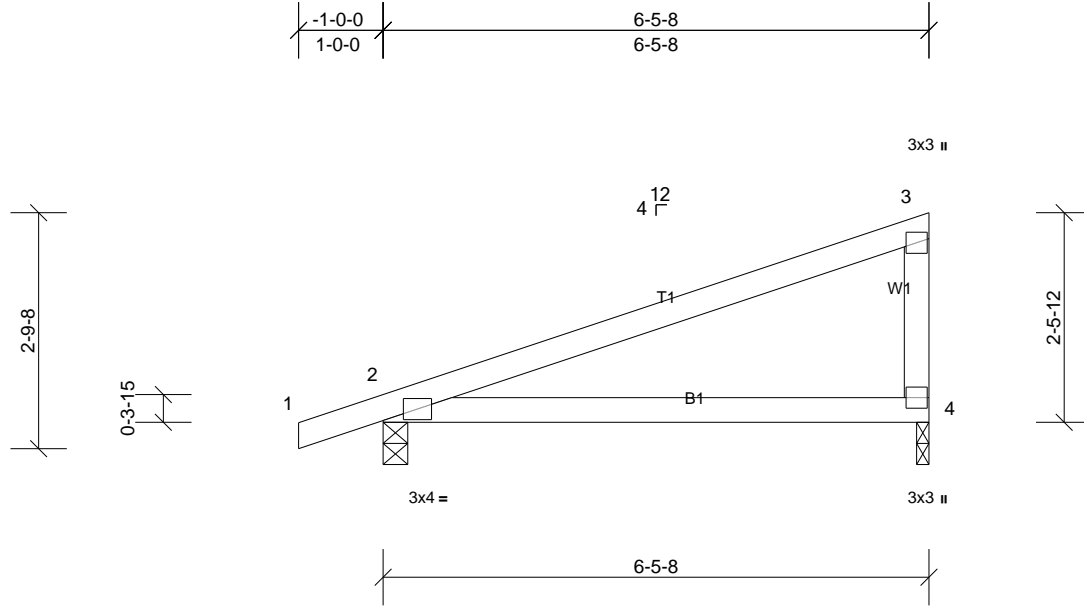
Job 72405466	Truss M1	Truss Type Truss	Qty 10	Ply 1	Professional Bldrs / Apex Craftsman RF Job Reference (optional)
-----------------	-------------	---------------------	-----------	----------	--

UFP Mid Atlantic LLC, 5631 S. NC 62, Burlington, NC, r thomas

Run: 8.62 S Sep 22 2022 Print: 8.620 S Sep 22 2022 MiTek Industries, Inc. Thu Feb 22 16:07:54

Page: 1

ID:s47yJyNLt0emldEJ3PhJWwymDz-40ROf5P7MLTi?X3EPTaLPGEEEmZo0kj7ufjmmkaziYXJ



Loading	(psf)	Spacing	2-0-0	CSI	DEFL	in	(loc)	l/defl	L/d	PLATES	GRIP	
TCLL (roof)	20.0	Plate Grip DOL	1.15	TC	0.47	Vert(LL)	0.06	4-7	>999	240	MT20	244/190
TCDL	10.0	Lumber DOL	1.15	BC	0.41	Vert(CT)	-0.11	4-7	>661	180		
BCLL	0.0*	Rep Stress Incr	YES	WB	0.00	Horz(CT)	0.00	2	n/a	n/a		
BCDL	10.0	Code	IRC2015/TPI2014	Matrix-MSH							Weight: 24 lb	FT = 20%

**LUMBER**

TOP CHORD 2x4 SP No.2  
 BOT CHORD 2x4 SP No.2  
 WEBS 2x4 SP No.3

**BRACING**

TOP CHORD Structural wood sheathing directly applied or 6-0-0 oc purlins, except end verticals.  
 BOT CHORD Rigid ceiling directly applied or 10-0-0 oc bracing.

**REACTIONS**

(lb/size) 2=317/0-3-8, (min. 0-1-8), 4=248/0-1-12, (min. 0-1-8)  
 Max Horiz 2=103 (LC 6)  
 Max Uplift 2=83 (LC 6), 4=64 (LC 10)

**FORCES**

(lb) - Max. Comp./Max. Ten. - All forces 250 (lb) or less except when shown.

**NOTES**

- 1) Wind: ASCE 7-10; Vult=130mph (3-second gust) Vasd=103mph; TC DL=6.0psf; BCDL=6.0psf; h=35ft; Cat. II; Exp B; Enclosed; MWFRS (envelope) exterior zone and C-C Exterior (2) zone; cantilever left and right exposed; end vertical left exposed; C-C for members and forces & MWFRS for reactions shown; Lumber DOL=1.60 plate grip DOL=1.60
- 2) This truss has been designed for a 10.0 psf bottom chord live load nonconcurrent with any other live loads.
- 3) \* This truss has been designed for a live load of 20.0psf on the bottom chord in all areas where a rectangle 3-06-00 tall by 2-00-00 wide will fit between the bottom chord and any other members.
- 4) Provide mechanical connection (by others) of truss to bearing plate at joint(s) 4.
- 5) Provide mechanical connection (by others) of truss to bearing plate capable of withstanding 64 lb uplift at joint 4 and 83 lb uplift at joint 2.
- 6) This truss is designed in accordance with the 2015 International Residential Code sections R502.11.1 and R802.10.2 and referenced standard ANSI/TPI 1.



This design is based upon parameters shown, and is for an individual building component to be installed and loaded vertically. Applicability of design parameters and proper incorporation of component is responsibility of the Building Designer. Building Designer shall verify all design information on this sheet for conformance with conditions and requirements of the specific building and governing codes and ordinances. Building Designer accepts responsibility for the correctness or accuracy of the design information as it may relate to a specific building. Certification is valid only when truss is fabricated by a UFPI plant. Bracing shown is for lateral support of truss members only and does not replace erection and permanent bracing. Refer to Building Component Safety Information (BCSI) for general guidance regarding storage, erection and bracing available from SBCA and Truss Plate Institute.



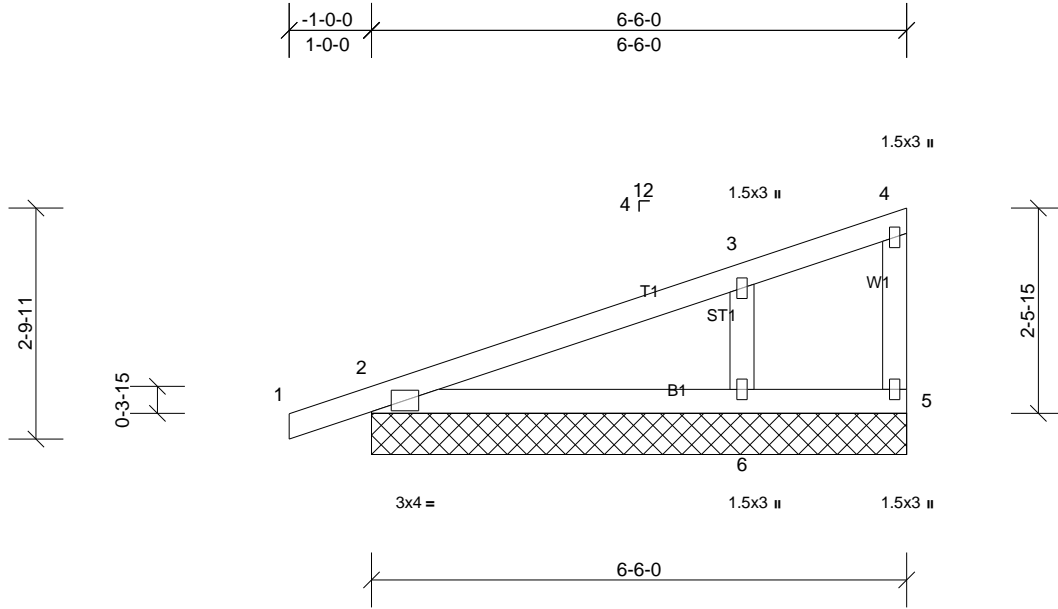
Job 72405466	Truss M1G	Truss Type Truss	Qty 1	Ply 1	Professional Bldrs / Apex Craftsman RF Job Reference (optional)
-----------------	--------------	---------------------	----------	----------	--

UFP Mid Atlantic LLC, 5631 S. NC 62, Burlington, NC, r thomas

Run: 8.62 S Sep 22 2022 Print: 8.620 S Sep 22 2022 MiTek Industries, Inc. Thu Feb 22 16:07:54

Page: 1

ID:s47yJyNLt0emldEJ3PhJWwymDz-40ROf5P7MLTi?X3EPTaLPGEIGZoGkjGufjmmkaziYXJ



Loading	(psf)	Spacing	2-0-0	CSI	DEFL	in	(loc)	l/defl	L/d	PLATES	GRIP
TCLL (roof)	20.0	Plate Grip DOL	1.15	TC	0.24	Vert(LL)	n/a	-	n/a	999	244/190
TCDL	10.0	Lumber DOL	1.15	BC	0.39	Vert(CT)	n/a	-	n/a	999	
BCLL	0.0*	Rep Stress Incr	YES	WB	0.06	Horz(CT)	0.00	2	n/a	n/a	
BCDL	10.0	Code	IRC2015/TPI2014	Matrix-MSH						Weight: 26 lb	FT = 20%

**LUMBER**  
TOP CHORD 2x4 SP No.2  
BOT CHORD 2x4 SP No.2  
WEBS 2x4 SP No.3  
OTHERS 2x4 SP No.3

**BRACING**  
TOP CHORD Structural wood sheathing directly applied or 6'-0'-0" oc purlins, except end verticals.  
BOT CHORD Rigid ceiling directly applied or 6'-0'-0" oc bracing.

**REACTIONS** All bearings 6'-6'-0".  
(lb) - Max Horiz 2=103 (LC 6), 7=103 (LC 6)  
Max Uplift All uplift 100 (lb) or less at joint(s) 2, 6, 7  
Max Grav All reactions 250 (lb) or less at joint(s) 2, 5, 7 except 6=350 (LC 1)

**FORCES** (lb) - Max. Comp./Max. Ten. - All forces 250 (lb) or less except when shown.  
**WEBS** 3-6=-270/187

- NOTES**
- 1) Wind: ASCE 7-10; Vult=130mph (3-second gust) Vasd=103mph; TCCL=6.0psf; BCCL=6.0psf; h=35ft; Cat. II; Exp B; Enclosed; MWFRS (envelope) exterior zone and C-C Exterior (2) zone; cantilever left and right exposed; end vertical left exposed; C-C for members and forces & MWFRS for reactions shown; Lumber DOL=1.60 plate grip DOL=1.60
  - 2) Truss designed for wind loads in the plane of the truss only.
  - 3) Gable requires continuous bottom chord bearing.
  - 4) Gable studs spaced at 2'-0'-0" oc.
  - 5) This truss has been designed for a 10.0 psf bottom chord live load nonconcurrent with any other live loads.
  - 6) \* This truss has been designed for a live load of 20.0psf on the bottom chord in all areas where a rectangle 3'-0"-6'-0" tall by 2'-0"-0" wide will fit between the bottom chord and any other members.
  - 7) Provide mechanical connection (by others) of truss to bearing plate capable of withstanding 100 lb uplift at joint(s) 2, 6, 2.
  - 8) This truss is designed in accordance with the 2015 International Residential Code sections R502.11.1 and R802.10.2 and referenced standard ANSI/TPI 1.



This design is based upon parameters shown, and is for an individual building component to be installed and loaded vertically. Applicability of design parameters and proper incorporation of component is responsibility of the Building Designer. Building Designer shall verify all design information on this sheet for conformance with conditions and requirements of the specific building and governing codes and ordinances. Building Designer accepts responsibility for the correctness or accuracy of the design information as it may relate to a specific building. Certification is valid only when truss is fabricated by a UFPI plant. Bracing shown is for lateral support of truss members only and does not replace erection and permanent bracing. Refer to Building Component Safety Information (BCSI) for general guidance regarding storage, erection and bracing available from SBCA and Truss Plate Institute.



Job 72405466	Truss P	Truss Type Truss	Qty 7	Ply 1	Professional Bldrs / Apex Craftsman RF Job Reference (optional)
-----------------	------------	---------------------	----------	----------	--

UFP Mid Atlantic LLC, 5631 S. NC 62, Burlington, NC, r thomas

Run: 8.62 S Sep 22 2022 Print: 8.620 S Sep 22 2022 MiTek Industries, Inc. Thu Feb 22 16:07:55

Page: 1

ID:KGhKWINzeJndNnpVc7CY27yymDy-YC?msRQI7ebZcheQzB5ayUnP9z80T5i1uNWKGOziYXI

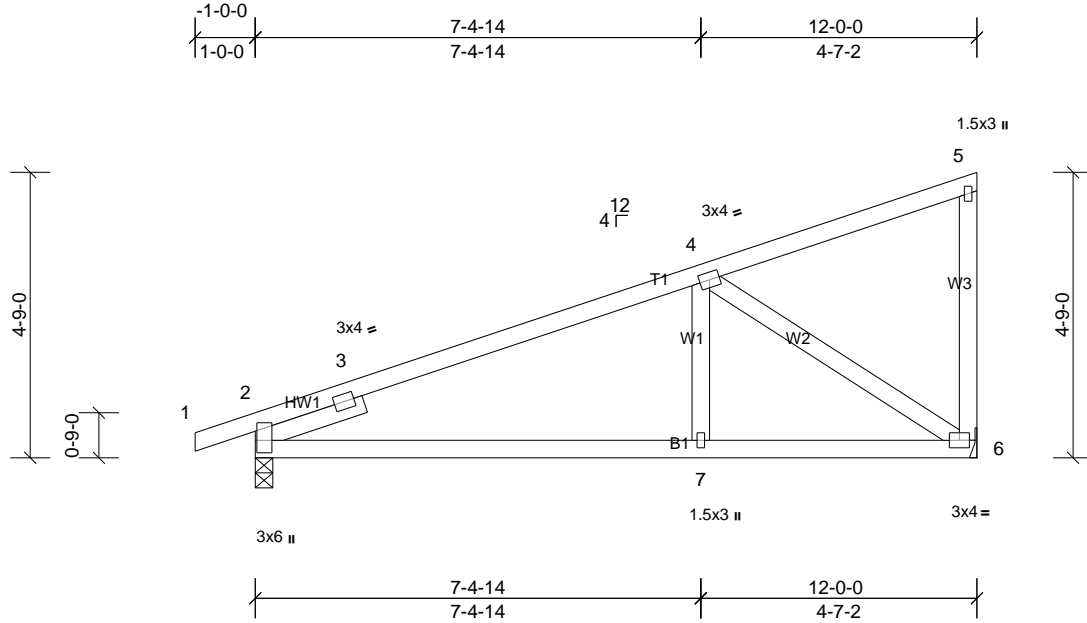


Plate Offsets (X, Y): [2:0-4-5,0-0-5]

Loading	(psf)	Spacing	2-0-0	CSI	DEFL	in	(loc)	l/defl	L/d	PLATES	GRIP	
TCLL (roof)	20.0	Plate Grip DOL	1.15	TC	0.49	Vert(LL)	0.06	7-10	>999	240	MT20	244/190
TCDL	10.0	Lumber DOL	1.15	BC	0.42	Vert(CT)	-0.12	7-10	>999	180		
BCLL	0.0*	Rep Stress Incr	YES	WB	0.36	Horz(CT)	0.02	2	n/a	n/a		
BCDL	10.0	Code	IRC2015/TPI2014	Matrix-MSH							Weight: 59 lb	FT = 20%

LUMBER	BRACING
TOP CHORD 2x4 SP No.2	TOP CHORD Structural wood sheathing directly applied or 6-0-0 oc purlins, except end verticals.
BOT CHORD 2x4 SP No.2	BOT CHORD Rigid ceiling directly applied or 10-0-0 oc bracing.
WEBS 2x4 SP No.3	
SLIDER Left 2x4 SP No.3 -- 1-11-0	

**REACTIONS** (lb/size) 2=537/0-3-8, (min. 0-1-8), 6=472/ Mechanical, (min. 0-1-8)  
 Max Horiz 2=178 (LC 6)  
 Max Uplift 2=108 (LC 6), 6=129 (LC 10)

**FORCES** (lb) - Max. Comp./Max. Ten. - All forces 250 (lb) or less except when shown.  
 TOP CHORD 2-3=-368/0, 3-4=-590/124  
 BOT CHORD 2-7=-332/560, 6-7=-238/560  
 WEBS 4-7=0/271, 4-6=-666/285

- NOTES**
- 1) Wind: ASCE 7-10; Vult=130mph (3-second gust) Vasd=103mph; TCDL=6.0psf; BCDL=6.0psf; h=35ft; Cat. II; Exp B; Enclosed; MWFRS (envelope) exterior zone and C-C Exterior (2) zone; cantilever left and right exposed; end vertical left exposed; C-C for members and forces & MWFRS for reactions shown; Lumber DOL=1.60 plate grip DOL=1.60
  - 2) This truss has been designed for a 10.0 psf bottom chord live load nonconcurrent with any other live loads.
  - 3) \* This truss has been designed for a live load of 20.0psf on the bottom chord in all areas where a rectangle 3-06-00 tall by 2-00-00 wide will fit between the bottom chord and any other members.
  - 4) Provide mechanical connection (by others) of truss to bearing plate capable of withstanding 108 lb uplift at joint 2 and 129 lb uplift at joint 6.
  - 5) This truss is designed in accordance with the 2015 International Residential Code sections R502.11.1 and R802.10.2 and referenced standard ANSI/TPI 1.



This design is based upon parameters shown, and is for an individual building component to be installed and loaded vertically. Applicability of design parameters and proper incorporation of component is responsibility of the Building Designer. Building Designer shall verify all design information on this sheet for conformance with conditions and requirements of the specific building and governing codes and ordinances. Building Designer accepts responsibility for the correctness or accuracy of the design information as it may relate to a specific building. Certification is valid only when truss is fabricated by a UFPI plant. Bracing shown is for lateral support of truss members only and does not replace erection and permanent bracing. Refer to Building Component Safety Information (BCSI) for general guidance regarding storage, erection and bracing available from SBCA and Truss Plate Institute.



Job 72405466	Truss P1	Truss Type Truss	Qty 1	Ply 1	Professional Bldrs / Apex Craftsman RF Job Reference (optional)
-----------------	-------------	---------------------	----------	----------	--

UFP Mid Atlantic LLC, 5631 S. NC 62, Burlington, NC, r thomas

Run: 8.62 S Sep 22 2022 Print: 8.620 S Sep 22 2022 MiTek Industries, Inc. Thu Feb 22 16:07:55

Page: 1

ID:KGhKWInZeJndNpVc7CY27yymDy-YC?msRQI7ebZcheQzB5ayUnP8z81T501uNWKGOziYXI

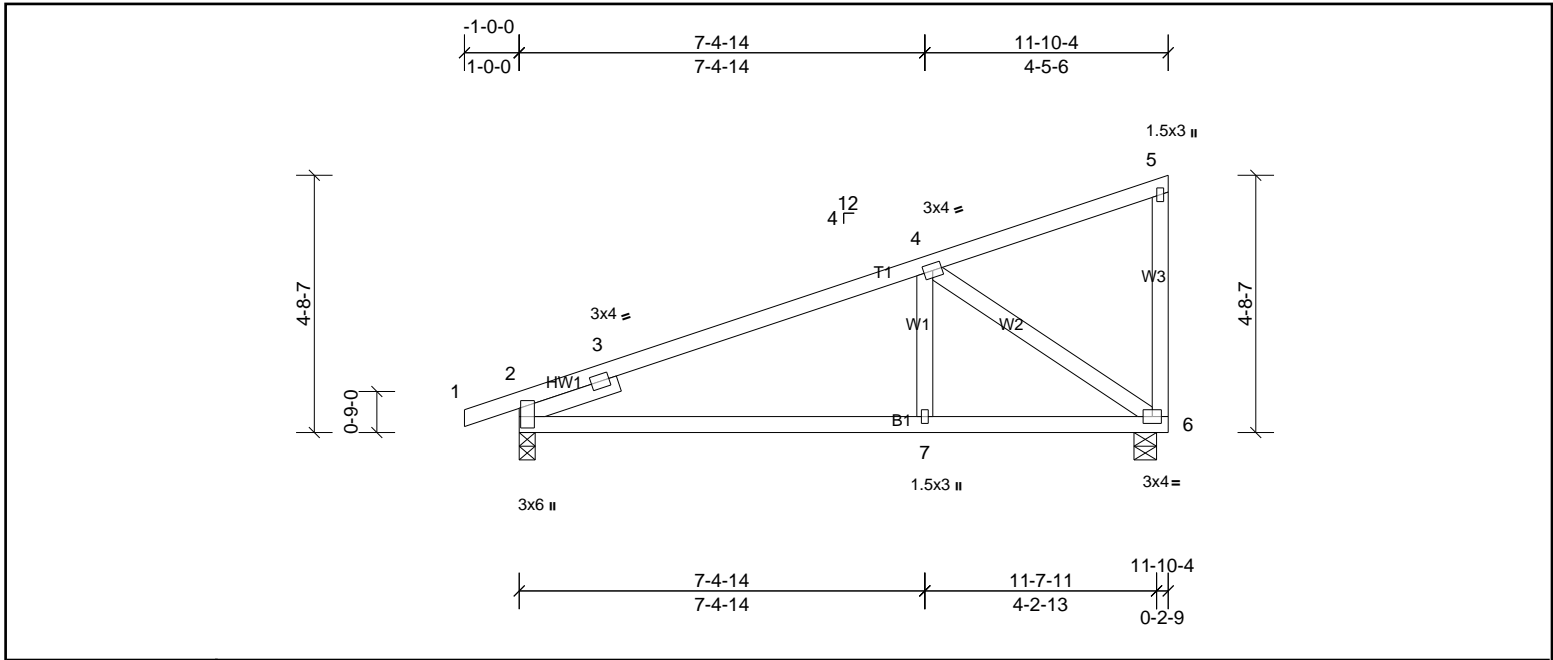


Plate Offsets (X, Y): [2:0-4-5,0-0-5]

Loading	(psf)	Spacing		CSI		DEFL	in	(loc)	l/defl	L/d	PLATES	GRIP
TCLL (roof)	20.0	Plate Grip DOL	2-0-0	TC	0.49	Vert(LL)	0.06	7-10	>999	240	MT20	244/190
TCDL	10.0	Lumber DOL	1.15	BC	0.42	Vert(CT)	-0.12	7-10	>999	180		
BCLL	0.0*	Rep Stress Incr	YES	WB	0.34	Horz(CT)	0.02	2	n/a	n/a		
BCDL	10.0	Code	IRC2015/TPI2014	Matrix-MSH							Weight: 58 lb	FT = 20%

LUMBER		BRACING	
TOP CHORD	2x4 SP No.2	TOP CHORD	Structural wood sheathing directly applied or 6-0-0 oc purlins, except end verticals.
BOT CHORD	2x4 SP No.2	BOT CHORD	Rigid ceiling directly applied or 10-0-0 oc bracing.
WEBS	2x4 SP No.3		
SLIDER	Left 2x4 SP No.3 -- 1-11-0		
<b>REACTIONS</b>	(lb/size) 2=531/0-3-8, (min. 0-1-8), 6=466/0-4-15, (min. 0-1-8)		
	Max Horiz 2=176 (LC 6)		
	Max Uplift 2=107 (LC 6), 6=128 (LC 10)		
<b>FORCES</b>	(lb) - Max. Comp./Max. Ten. - All forces 250 (lb) or less except when shown.		
TOP CHORD	2-3=-367/0, 3-4=-575/122		
BOT CHORD	2-7=-332/545, 6-7=-234/545		
WEBS	4-7=0/270, 4-6=-656/283		

- NOTES**
- 1) Wind: ASCE 7-10; Vult=130mph (3-second gust) Vasd=103mph; TCDL=6.0psf; BCDL=6.0psf; h=35ft; Cat. II; Exp B; Enclosed; MWFRS (envelope) exterior zone and C-C Exterior (2) zone; cantilever left and right exposed; end vertical left exposed; C-C for members and forces & MWFRS for reactions shown; Lumber DOL=1.60 plate grip DOL=1.60
  - 2) This truss has been designed for a 10.0 psf bottom chord live load nonconcurrent with any other live loads.
  - 3) \* This truss has been designed for a live load of 20.0psf on the bottom chord in all areas where a rectangle 3-06-00 tall by 2-00-00 wide will fit between the bottom chord and any other members.
  - 4) Provide mechanical connection (by others) of truss to bearing plate capable of withstanding 107 lb uplift at joint 2 and 128 lb uplift at joint 6.
  - 5) This truss is designed in accordance with the 2015 International Residential Code sections R502.11.1 and R802.10.2 and referenced standard ANSI/TPI 1.



This design is based upon parameters shown, and is for an individual building component to be installed and loaded vertically. Applicability of design parameters and proper incorporation of component is responsibility of the Building Designer. Building Designer shall verify all design information on this sheet for conformance with conditions and requirements of the specific building and governing codes and ordinances. Building Designer accepts responsibility for the correctness or accuracy of the design information as it may relate to a specific building. Certification is valid only when truss is fabricated by a UFPI plant. Bracing shown is for lateral support of truss members only and does not replace erection and permanent bracing. Refer to Building Component Safety Information (BCSI) for general guidance regarding storage, erection and bracing available from SBCA and Truss Plate Institute.





Job 72405466	Truss PL	Truss Type Truss	Qty 1	Ply 1	Professional Bldrs / Apex Craftsman RF Job Reference (optional)
-----------------	-------------	---------------------	----------	----------	--

UFP Mid Atlantic LLC, 5631 S. NC 62, Burlington, NC, r thomas

Run: 8.62 S Sep 22 2022 Print: 8.620 S Sep 22 2022 MiTek Industries, Inc. Thu Feb 22 16:07:55

Page: 1

ID:Gep4xzPDax1Ld5zukYE07YymDw-YC?msRQl7ebZcheQzB5ayUnOTz8HT9X1uNWKGOziYXI

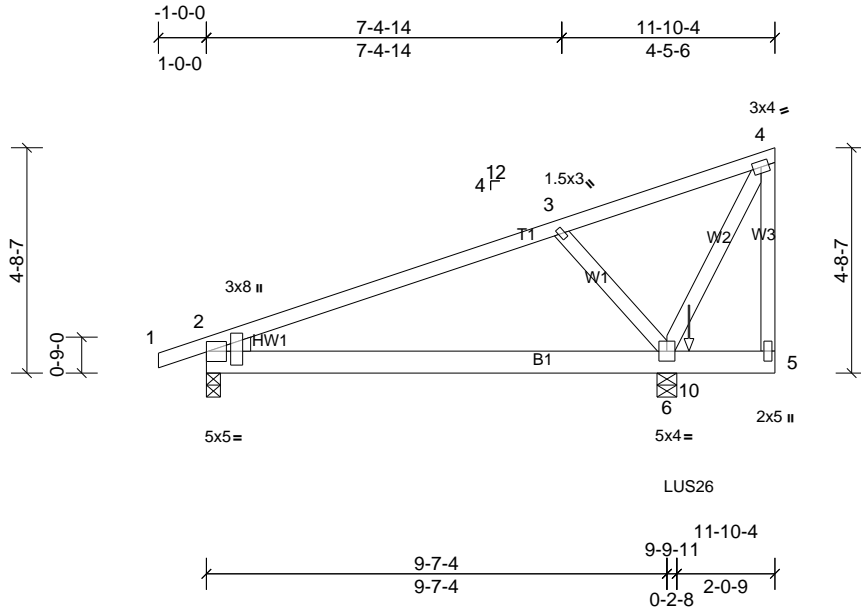


Plate Offsets (X, Y): [2:Edge,0-2-6], [2:0-3-5,0-6-1]

Loading	(psf)	Spacing		2-0-0	CSI		DEFL	in	(loc)	l/defl	L/d	PLATES	GRIP
TCLL (roof)	20.0	Plate Grip DOL		1.15	TC	0.54	Vert(LL)	-0.05	6-9	>999	240	MT20	244/190
TCDL	10.0	Lumber DOL		1.15	BC	0.40	Vert(CT)	-0.11	6-9	>999	180		
BCLL	0.0*	Rep Stress Incr			WB	0.12	Horz(CT)	0.01	2	n/a	n/a		
BCDL	10.0	Code	IRC2015/TPI2014		Matrix-MSH							Weight: 67 lb	FT = 20%

**LUMBER**

TOP CHORD 2x4 SP No.2  
 BOT CHORD 2x6 SP No.2  
 WEBS 2x4 SP No.3  
 WEDGE Left: 2x4 SP No.2

**BRACING**

TOP CHORD Structural wood sheathing directly applied or 6-0-0 oc purlins, except end verticals.  
 BOT CHORD Rigid ceiling directly applied or 6-0-0 oc bracing.

**REACTIONS**

(lb/size) 2=406/0-3-8, (min. 0-1-8), 6=1075/0-4-15, (min. 0-1-8)  
 Max Horiz 2=176 (LC 4)  
 Max Uplift 2=87 (LC 19), 6=250 (LC 8)

**FORCES**

(lb) - Max. Comp./Max. Ten. - All forces 250 (lb) or less except when shown.  
 TOP CHORD 2-3=-280/27  
 WEBS 3-6=-396/205

**NOTES**

- 1) Wind: ASCE 7-10; Vult=130mph (3-second gust) Vasd=103mph; TCCL=6.0psf; BCDL=6.0psf; h=35ft; Cat. II; Exp B; Enclosed; MWFRS (envelope) exterior zone; end vertical left exposed; Lumber DOL=1.60 plate grip DOL=1.60
- 2) This truss has been designed for a 10.0 psf bottom chord live load nonconcurrent with any other live loads.
- 3) \* This truss has been designed for a live load of 20.0psf on the bottom chord in all areas where a rectangle 3-06-00 tall by 2-00-00 wide will fit between the bottom chord and any other members.
- 4) Provide mechanical connection (by others) of truss to bearing plate capable of withstanding 87 lb uplift at joint 2 and 250 lb uplift at joint 6.
- 5) This truss is designed in accordance with the 2015 International Residential Code sections R502.11.1 and R802.10.2 and referenced standard ANSI/TPI 1.
- 6) Use Simpson Strong-Tie LUS26 (4-10d Girder, 3-10d Truss, Single Ply Girder) or equivalent at 10-0-12 from the left end to connect truss(es) to front face of bottom chord.
- 7) Fill all nail holes where hanger is in contact with lumber.
- 8) In the LOAD CASE(S) section, loads applied to the face of the truss are noted as front (F) or back (B).

**LOAD CASE(S)**

Standard

- 1) Dead + Roof Live (balanced): Lumber Increase=1.15, Plate Increase=1.15  
 Uniform Loads (lb/ft)  
 Vert: 1-4=-60, 5-7=-20  
 Concentrated Loads (lb)  
 Vert: 10=-484 (F)



This design is based upon parameters shown, and is for an individual building component to be installed and loaded vertically. Applicability of design parameters and proper incorporation of component is responsibility of the Building Designer. Building Designer shall verify all design information on this sheet for conformance with conditions and requirements of the specific building and governing codes and ordinances. Building Designer accepts responsibility for the correctness or accuracy of the design information as it may relate to a specific building. Certification is valid only when truss is fabricated by a UFPI plant. Bracing shown is for lateral support of truss members only and does not replace erection and permanent bracing. Refer to Building Component Safety Information (BCSI) for general guidance regarding storage, erection and bracing available from SBCA and Truss Plate Institute.



Job 72405466	Truss V1	Truss Type Truss	Qty 1	Ply 1	Professional Bldrs / Apex Craftsman RF Job Reference (optional)
-----------------	-------------	---------------------	----------	----------	--

UFP Mid Atlantic LLC, 5631 S. NC 62, Burlington, NC, r thomas

Run: 8.62 S Sep 22 2022 Print: 8.620 S Sep 22 2022 MiTek Industries, Inc. Thu Feb 22 16:07:55

Page: 1

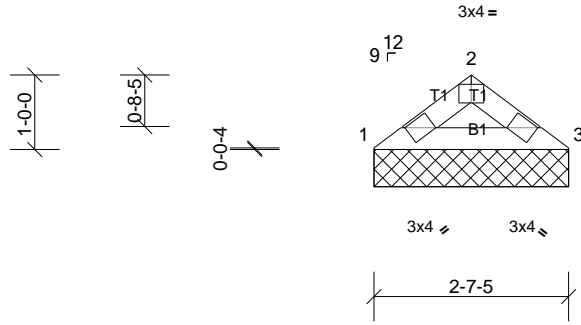
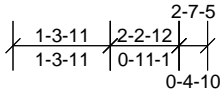


Plate Offsets (X, Y): [2:0-2-0,Edge]

Loading	(psf)	Spacing	2-0-0	CSI	DEFL	in	(loc)	l/defl	L/d	PLATES	GRIP	
TCLL (roof)	20.0	Plate Grip DOL	1.15	TC	0.05	Vert(LL)	n/a	-	n/a	999	MT20	244/190
TCDL	10.0	Lumber DOL	1.15	BC	0.05	Vert(TL)	n/a	-	n/a	999		
BCLL	0.0*	Rep Stress Incr	YES	WB	0.00	Horiz(TL)	0.00	3	n/a	n/a		
BCDL	10.0	Code	IRC2015/TPI2014	Matrix-MP							Weight: 7 lb	FT = 20%

**LUMBER**

TOP CHORD 2x4 SP No.2  
BOT CHORD 2x4 SP No.2

**BRACING**

TOP CHORD Structural wood sheathing directly applied or 2-7-5 oc purlins.  
BOT CHORD Rigid ceiling directly applied or 10-0-0 oc bracing.

**REACTIONS**

(lb/size) 1=104/2-7-5, (min. 0-1-8), 3=104/2-7-5, (min. 0-1-8)  
Max Horiz 1=21 (LC 6)  
Max Uplift 1=13 (LC 10), 3=13 (LC 11)

**FORCES**

(lb) - Max. Comp./Max. Ten. - All forces 250 (lb) or less except when shown.

**NOTES**

- Unbalanced roof live loads have been considered for this design.
- Wind: ASCE 7-10; Vult=130mph (3-second gust) Vasd=103mph; TCDL=6.0psf; BCDL=6.0psf; h=35ft; Cat. II; Exp B; Enclosed; MWFRS (envelope) exterior zone and C-C Exterior (2) zone; cantilever left and right exposed; end vertical left and right exposed; C-C for members and forces & MWFRS for reactions shown; Lumber DOL=1.60 plate grip DOL=1.60
- Gable requires continuous bottom chord bearing.
- This truss has been designed for a 10.0 psf bottom chord live load nonconcurrent with any other live loads.
- \* This truss has been designed for a live load of 20.0psf on the bottom chord in all areas where a rectangle 3-06-00 tall by 2-00-00 wide will fit between the bottom chord and any other members.
- Provide mechanical connection (by others) of truss to bearing plate capable of withstanding 13 lb uplift at joint 1 and 13 lb uplift at joint 3.
- This truss is designed in accordance with the 2015 International Residential Code sections R502.11.1 and R802.10.2 and referenced standard ANSI/TPI 1.



This design is based upon parameters shown, and is for an individual building component to be installed and loaded vertically. Applicability of design parameters and proper incorporation of component is responsibility of the Building Designer. Building Designer shall verify all design information on this sheet for conformance with conditions and requirements of the specific building and governing codes and ordinances. Building Designer accepts responsibility for the correctness or accuracy of the design information as it may relate to a specific building. Certification is valid only when truss is fabricated by a UFPI plant. Bracing shown is for lateral support of truss members only and does not replace erection and permanent bracing. Refer to Building Component Safety Information (BCSI) for general guidance regarding storage, erection and bracing available from SBCA and Truss Plate Institute.



Job 72405466	Truss V2	Truss Type Truss	Qty 1	Ply 1	Professional Bldrs / Apex Craftsman RF Job Reference (optional)
-----------------	-------------	---------------------	----------	----------	--

UFP Mid Atlantic LLC, 5631 S. NC 62, Burlington, NC, r thomas

Run: 8.62 S Sep 22 2022 Print: 8.620 S Sep 22 2022 MiTek Industries, Inc. Thu Feb 22 16:07:55

Page: 1

ID:ZjClrZHyXsmmQYCz8R3gjRyymE4-YC?msRQI7ebZcheQzB5ayUnUuzCETAN1uNWKG0ziYXI

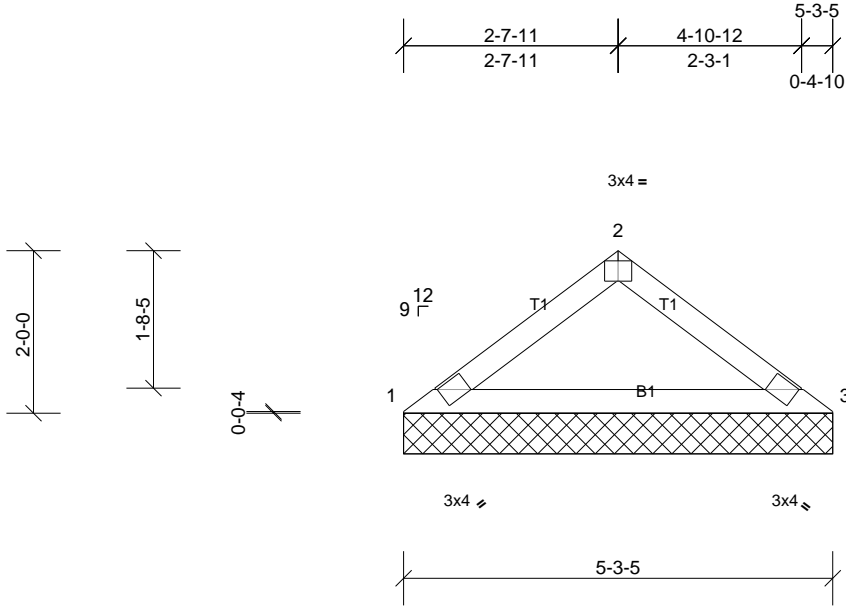


Plate Offsets (X, Y): [2:0-2-0,Edge]

Loading	(psf)	Spacing	2-0-0	CSI	DEFL	in	(loc)	l/defl	L/d	PLATES	GRIP	
TCLL (roof)	20.0	Plate Grip DOL	1.15	TC	0.19	Vert(LL)	n/a	-	n/a	999	MT20	244/190
TCDL	10.0	Lumber DOL	1.15	BC	0.15	Vert(TL)	n/a	-	n/a	999		
BCLL	0.0*	Rep Stress Incr	YES	WB	0.00	Horiz(TL)	0.01	3	n/a	n/a		
BCDL	10.0	Code	IRC2015/TPI2014	Matrix-MSH							Weight: 16 lb	FT = 20%

**LUMBER**

TOP CHORD 2x4 SP No.2  
BOT CHORD 2x4 SP No.2

**BRACING**

TOP CHORD Structural wood sheathing directly applied or 5-3-5 oc purlins.  
BOT CHORD Rigid ceiling directly applied or 10-0-0 oc bracing.

**REACTIONS**

(lb/size) 1=211/5-3-5, (min. 0-1-8), 3=211/5-3-5, (min. 0-1-8)  
Max Horiz 1=47 (LC 8)  
Max Uplift 1=26 (LC 10), 3=26 (LC 11)

**FORCES**

(lb) - Max. Comp./Max. Ten. - All forces 250 (lb) or less except when shown.  
TOP CHORD 1-2=-316/76  
BOT CHORD 1-3=-51/251

**NOTES**

- 1) Unbalanced roof live loads have been considered for this design.
- 2) Wind: ASCE 7-10; Vult=130mph (3-second gust) Vasd=103mph; TCDL=6.0psf; BCDL=6.0psf; h=35ft; Cat. II; Exp B; Enclosed; MWFRS (envelope) exterior zone and C-C Exterior (2) zone; cantilever left and right exposed; end vertical left and right exposed; C-C for members and forces & MWFRS for reactions shown; Lumber DOL=1.60 plate grip DOL=1.60
- 3) Gable requires continuous bottom chord bearing.
- 4) This truss has been designed for a 10.0 psf bottom chord live load nonconcurrent with any other live loads.
- 5) \* This truss has been designed for a live load of 20.0psf on the bottom chord in all areas where a rectangle 3-06-00 tall by 2-00-00 wide will fit between the bottom chord and any other members.
- 6) Provide mechanical connection (by others) of truss to bearing plate capable of withstanding 26 lb uplift at joint 1 and 26 lb uplift at joint 3.
- 7) This truss is designed in accordance with the 2015 International Residential Code sections R502.11.1 and R802.10.2 and referenced standard ANSI/TPI 1.



This design is based upon parameters shown, and is for an individual building component to be installed and loaded vertically. Applicability of design parameters and proper incorporation of component is responsibility of the Building Designer. Building Designer shall verify all design information on this sheet for conformance with conditions and requirements of the specific building and governing codes and ordinances. Building Designer accepts responsibility for the correctness or accuracy of the design information as it may relate to a specific building. Certification is valid only when truss is fabricated by a UFPI plant. Bracing shown is for lateral support of truss members only and does not replace erection and permanent bracing. Refer to Building Component Safety Information (BCSI) for general guidance regarding storage, erection and bracing available from SBCA and Truss Plate Institute.



Job 72405466	Truss V3	Truss Type Truss	Qty 1	Ply 1	Professional Bldrs / Apex Craftsman RF Job Reference (optional)
-----------------	-------------	---------------------	----------	----------	--

UFP Mid Atlantic LLC, 5631 S. NC 62, Burlington, NC, r thomas

Run: 8.62 S Sep 22 2022 Print: 8.620 S Sep 22 2022 MiTek Industries, Inc. Thu Feb 22 16:07:55

Page: 1

ID:ZjClrZHxSmmQYCz8R3gjRyymE4-YC?msRQI7ebZcheQzB5ayUnQ7z8aTAN1uNWKG0ziYXI

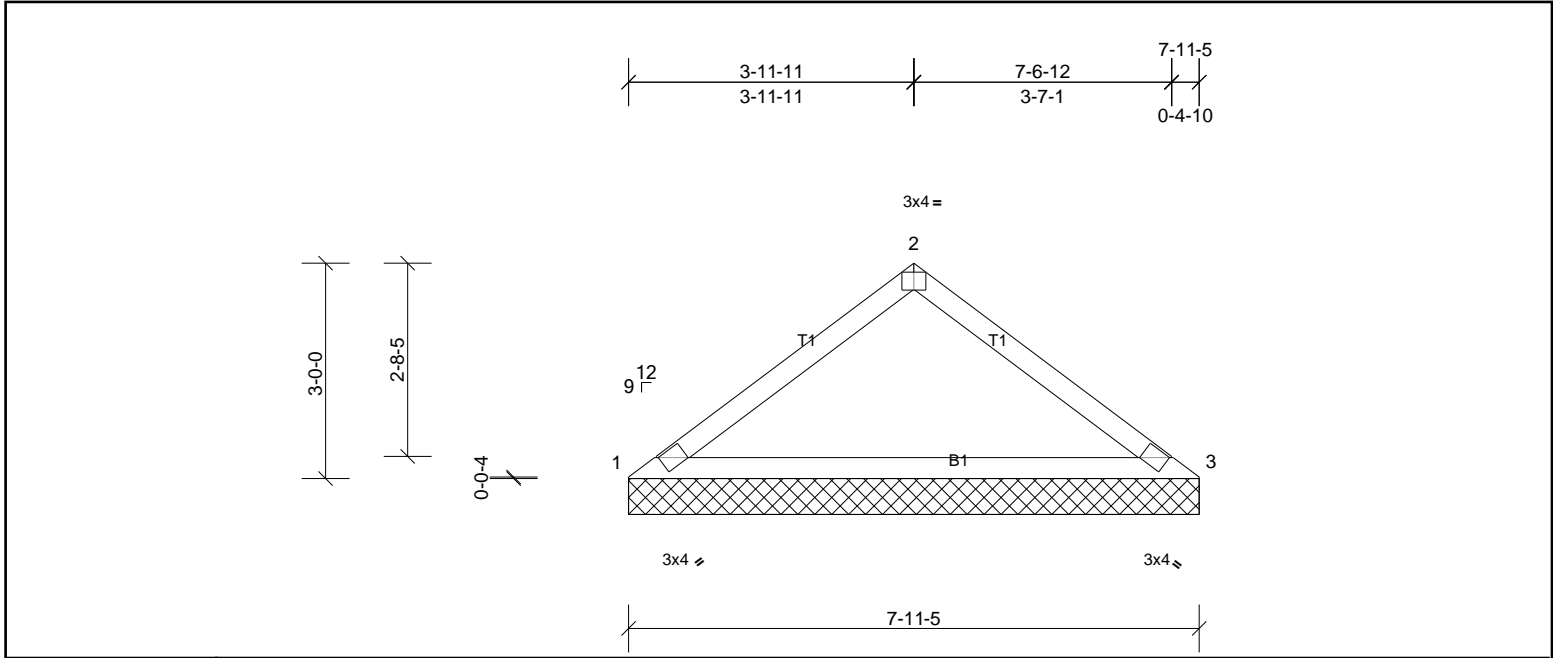


Plate Offsets (X, Y): [2:0-2-0,Edge]

Loading	(psf)	Spacing	2-0-0	CSI	DEFL	in	(loc)	l/defl	L/d	PLATES	GRIP	
TCLL (roof)	20.0	Plate Grip DOL	1.15	TC	0.43	Vert(LL)	n/a	-	n/a	999	MT20	244/190
TCDL	10.0	Lumber DOL	1.15	BC	0.39	Vert(TL)	n/a	-	n/a	999		
BCLL	0.0*	Rep Stress Incr	YES	WB	0.00	Horiz(TL)	0.02	3	n/a	n/a		
BCDL	10.0	Code	IRC2015/TPI2014	Matrix-MSH							Weight: 25 lb	FT = 20%

LUMBER		BRACING	
TOP CHORD	2x4 SP No.2	TOP CHORD	Structural wood sheathing directly applied or 6-0-0 oc purlins.
BOT CHORD	2x4 SP No.2	BOT CHORD	Rigid ceiling directly applied or 10-0-0 oc bracing.
<b>REACTIONS</b>	(lb/size) 1=318/7-11-5, (min. 0-1-8), 3=318/7-11-5, (min. 0-1-8) Max Horiz 1=73 (LC 7) Max Uplift 1=39 (LC 10), 3=39 (LC 11)		
<b>FORCES</b>	(lb) - Max. Comp./Max. Ten. - All forces 250 (lb) or less except when shown.		
TOP CHORD	1-2=-494/102, 2-3=-292/102		
BOT CHORD	1-3=-80/393		

- NOTES**
- Unbalanced roof live loads have been considered for this design.
  - Wind: ASCE 7-10; Vult=130mph (3-second gust) Vasd=103mph; TCDL=6.0psf; BCDL=6.0psf; h=35ft; Cat. II; Exp B; Enclosed; MWFRS (envelope) exterior zone and C-C Exterior (2) zone; cantilever left and right exposed; end vertical left and right exposed; C-C for members and forces & MWFRS for reactions shown; Lumber DOL=1.60 plate grip DOL=1.60
  - Gable requires continuous bottom chord bearing.
  - This truss has been designed for a 10.0 psf bottom chord live load nonconcurrent with any other live loads.
  - \* This truss has been designed for a live load of 20.0psf on the bottom chord in all areas where a rectangle 3-06-00 tall by 2-00-00 wide will fit between the bottom chord and any other members.
  - Provide mechanical connection (by others) of truss to bearing plate capable of withstanding 39 lb uplift at joint 1 and 39 lb uplift at joint 3.
  - This truss is designed in accordance with the 2015 International Residential Code sections R502.11.1 and R802.10.2 and referenced standard ANSI/TPI 1.



This design is based upon parameters shown, and is for an individual building component to be installed and loaded vertically. Applicability of design parameters and proper incorporation of component is responsibility of the Building Designer. Building Designer shall verify all design information on this sheet for conformance with conditions and requirements of the specific building and governing codes and ordinances. Building Designer accepts responsibility for the correctness or accuracy of the design information as it may relate to a specific building. Certification is valid only when truss is fabricated by a UFPI plant. Bracing shown is for lateral support of truss members only and does not replace erection and permanent bracing. Refer to Building Component Safety Information (BCSI) for general guidance regarding storage, erection and bracing available from SBCA and Truss Plate Institute.



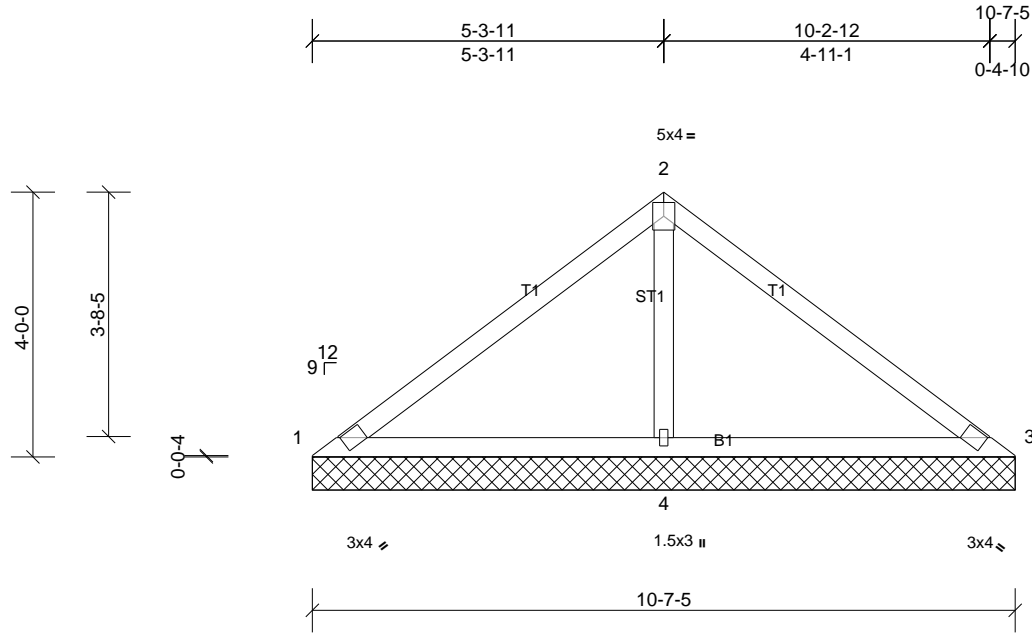
Job 72405466	Truss V4	Truss Type Truss	Qty 1	Ply 1	Professional Bldrs / Apex Craftsman RF Job Reference (optional)
-----------------	-------------	---------------------	----------	----------	--

UFP Mid Atlantic LLC, 5631 S. NC 62, Burlington, NC, r thomas

Run: 8.62 S Sep 22 2022 Print: 8.620 S Sep 22 2022 MiTek Industries, Inc. Thu Feb 22 16:07:56

Page: 1

ID:ZjClrZHyXsmmQYCz8R3gjRyymE4-0OZ84nRNtyjQErdDwucpVhKcMNVACabA71FtpSziYXH



Loading	(psf)	Spacing	2-0-0	CSI	DEFL	in	(loc)	l/defl	L/d	PLATES	GRIP	
TCLL (roof)	20.0	Plate Grip DOL	1.15	TC	0.33	Vert(LL)	n/a	-	n/a	999	MT20	244/190
TCDL	10.0	Lumber DOL	1.15	BC	0.30	Vert(TL)	n/a	-	n/a	999		
BCLL	0.0*	Rep Stress Incr	YES	WB	0.19	Horiz(TL)	0.00	3	n/a	n/a		
BCDL	10.0	Code	IRC2015/TPI2014	Matrix-MSH							Weight: 39 lb	FT = 20%

LUMBER		BRACING	
TOP CHORD	2x4 SP No.2	TOP CHORD	Structural wood sheathing directly applied or 10-0-0 oc purlins.
BOT CHORD	2x4 SP No.2	BOT CHORD	Rigid ceiling directly applied or 6-0-0 oc bracing.
OTHERS	2x4 SP No.3		

REACTIONS	(lb/size)	1=17/10-7-5, (min. 0-1-8), 3=17/10-7-5, (min. 0-1-8), 4=814/10-7-5, (min. 0-1-8)
Max Horiz	1=99 (LC 7)	
Max Uplift	1=41 (LC 22), 3=41 (LC 21), 4=148 (LC 10)	
Max Grav	1=66 (LC 21), 3=66 (LC 22), 4=814 (LC 1)	

FORCES	(lb) - Max. Comp./Max. Ten. - All forces 250 (lb) or less except when shown.
TOP CHORD	1-2=-119/373, 2-3=-119/373
BOT CHORD	1-4=-307/170, 3-4=-307/170
WEBS	2-4=-632/251

- NOTES**
- Unbalanced roof live loads have been considered for this design.
  - Wind: ASCE 7-10; Vult=130mph (3-second gust) Vasd=103mph; TCCL=6.0psf; BCDL=6.0psf; h=35ft; Cat. II; Exp B; Enclosed; MWFRS (envelope) exterior zone and C-C Exterior (2) zone; cantilever left and right exposed; end vertical left and right exposed; C-C for members and forces & MWFRS for reactions shown; Lumber DOL=1.60 plate grip DOL=1.60
  - Gable requires continuous bottom chord bearing.
  - This truss has been designed for a 10.0 psf bottom chord live load nonconcurrent with any other live loads.
  - \* This truss has been designed for a live load of 20.0psf on the bottom chord in all areas where a rectangle 3-06-00 tall by 2-00-00 wide will fit between the bottom chord and any other members.
  - Provide mechanical connection (by others) of truss to bearing plate capable of withstanding 41 lb uplift at joint 1, 41 lb uplift at joint 3 and 148 lb uplift at joint 4.
  - This truss is designed in accordance with the 2015 International Residential Code sections R502.11.1 and R802.10.2 and referenced standard ANSI/TPI 1.



This design is based upon parameters shown, and is for an individual building component to be installed and loaded vertically. Applicability of design parameters and proper incorporation of component is responsibility of the Building Designer. Building Designer shall verify all design information on this sheet for conformance with conditions and requirements of the specific building and governing codes and ordinances. Building Designer accepts responsibility for the correctness or accuracy of the design information as it may relate to a specific building. Certification is valid only when truss is fabricated by a UFPI plant. Bracing shown is for lateral support of truss members only and does not replace erection and permanent bracing. Refer to Building Component Safety Information (BCSI) for general guidance regarding storage, erection and bracing available from SBCA and Truss Plate Institute.





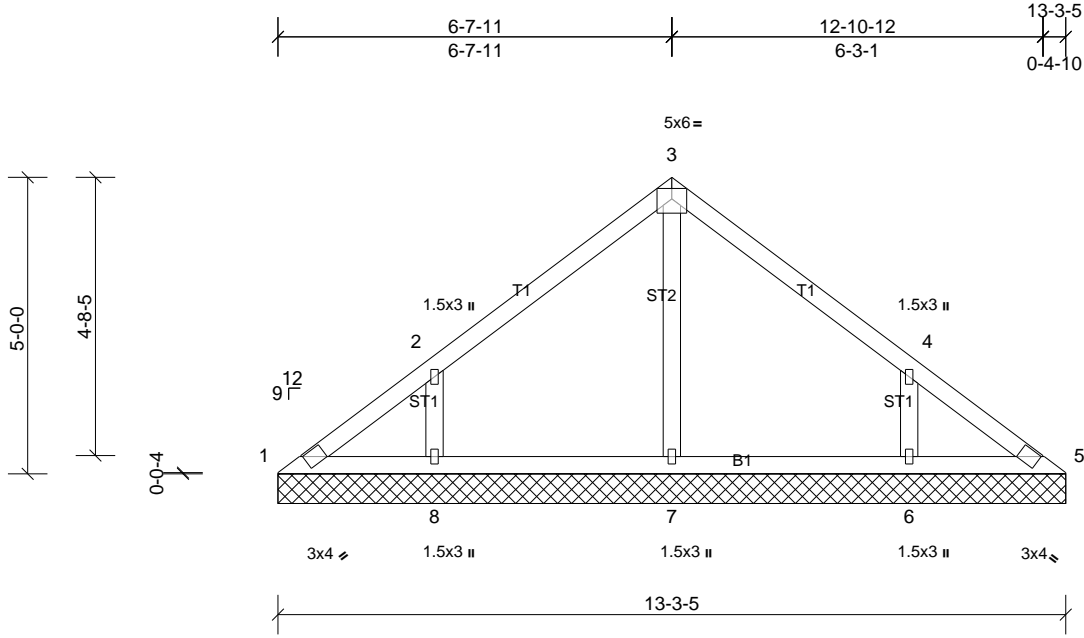
Job 72405466	Truss V5	Truss Type Truss	Qty 1	Ply 1	Professional Bldrs / Apex Craftsman RF Job Reference (optional)
-----------------	-------------	---------------------	----------	----------	--

UFP Mid Atlantic LLC, 5631 S. NC 62, Burlington, NC, r thomas

Run: 8.62 S Sep 22 2022 Print: 8.620 S Sep 22 2022 MiTek Industries, Inc. Thu Feb 22 16:07:56

Page: 1

ID:1wmg2vlaHAud1in9i9avGfyymE3-0OZ84nRNtjQErDdWucpVhKeTNZ0CclA71FtpSziYXH



Loading	(psf)	Spacing	2-0-0	CSI	DEFL	in	(loc)	l/defl	L/d	PLATES	GRIP	
TCLL (roof)	20.0	Plate Grip DOL	1.15	TC	0.20	Vert(LL)	n/a	-	n/a	999	MT20	244/190
TCDL	10.0	Lumber DOL	1.15	BC	0.12	Vert(TL)	n/a	-	n/a	999		
BCLL	0.0*	Rep Stress Incr	YES	WB	0.08	Horiz(TL)	0.00	5	n/a	n/a		
BCDL	10.0	Code	IRC2015/TPI2014	Matrix-MSH							Weight: 54 lb	FT = 20%

**LUMBER**  
TOP CHORD 2x4 SP No.2  
BOT CHORD 2x4 SP No.2  
OTHERS 2x4 SP No.3

**BRACING**  
TOP CHORD Structural wood sheathing directly applied or 6-0-0 oc purlins.  
BOT CHORD Rigid ceiling directly applied or 10-0-0 oc bracing.

**REACTIONS** All bearings 13-3-5.  
(lb) - Max Horiz 1=-125 (LC 8)  
Max Uplift All uplift 100 (lb) or less at joint(s) 1 except 6=-150 (LC 11), 8=-152 (LC 10)  
Max Grav All reactions 250 (lb) or less at joint(s) 1, 5 except 6=341 (LC 18), 7=274 (LC 1), 8=344 (LC 17)

**FORCES** (lb) - Max. Comp./Max. Ten. - All forces 250 (lb) or less except when shown.  
**WEBS** 2-8=-272/196, 4-6=-272/195

- NOTES**
- Unbalanced roof live loads have been considered for this design.
  - Wind: ASCE 7-10; Vult=130mph (3-second gust) Vasd=103mph; TCCL=6.0psf; BCDL=6.0psf; h=35ft; Cat. II; Exp B; Enclosed; MWFRS (envelope) exterior zone and C-C Exterior (2) zone; cantilever left and right exposed; end vertical left and right exposed; C-C for members and forces & MWFRS for reactions shown; Lumber DOL=1.60 plate grip DOL=1.60
  - Gable requires continuous bottom chord bearing.
  - This truss has been designed for a 10.0 psf bottom chord live load nonconcurrent with any other live loads.
  - \* This truss has been designed for a live load of 20.0psf on the bottom chord in all areas where a rectangle 3-06-00 tall by 2-00-00 wide will fit between the bottom chord and any other members.
  - Provide mechanical connection (by others) of truss to bearing plate capable of withstanding 100 lb uplift at joint(s) 1 except (jt=lb) 8=152, 6=149.
  - This truss is designed in accordance with the 2015 International Residential Code sections R502.11.1 and R802.10.2 and referenced standard ANSI/TPI 1.



This design is based upon parameters shown, and is for an individual building component to be installed and loaded vertically. Applicability of design parameters and proper incorporation of component is responsibility of the Building Designer. Building Designer shall verify all design information on this sheet for conformance with conditions and requirements of the specific building and governing codes and ordinances. Building Designer accepts responsibility for the correctness or accuracy of the design information as it may relate to a specific building. Certification is valid only when truss is fabricated by a UFPI plant. Bracing shown is for lateral support of truss members only and does not replace erection and permanent bracing. Refer to Building Component Safety Information (BCSI) for general guidance regarding storage, erection and bracing available from SBCA and Truss Plate Institute.



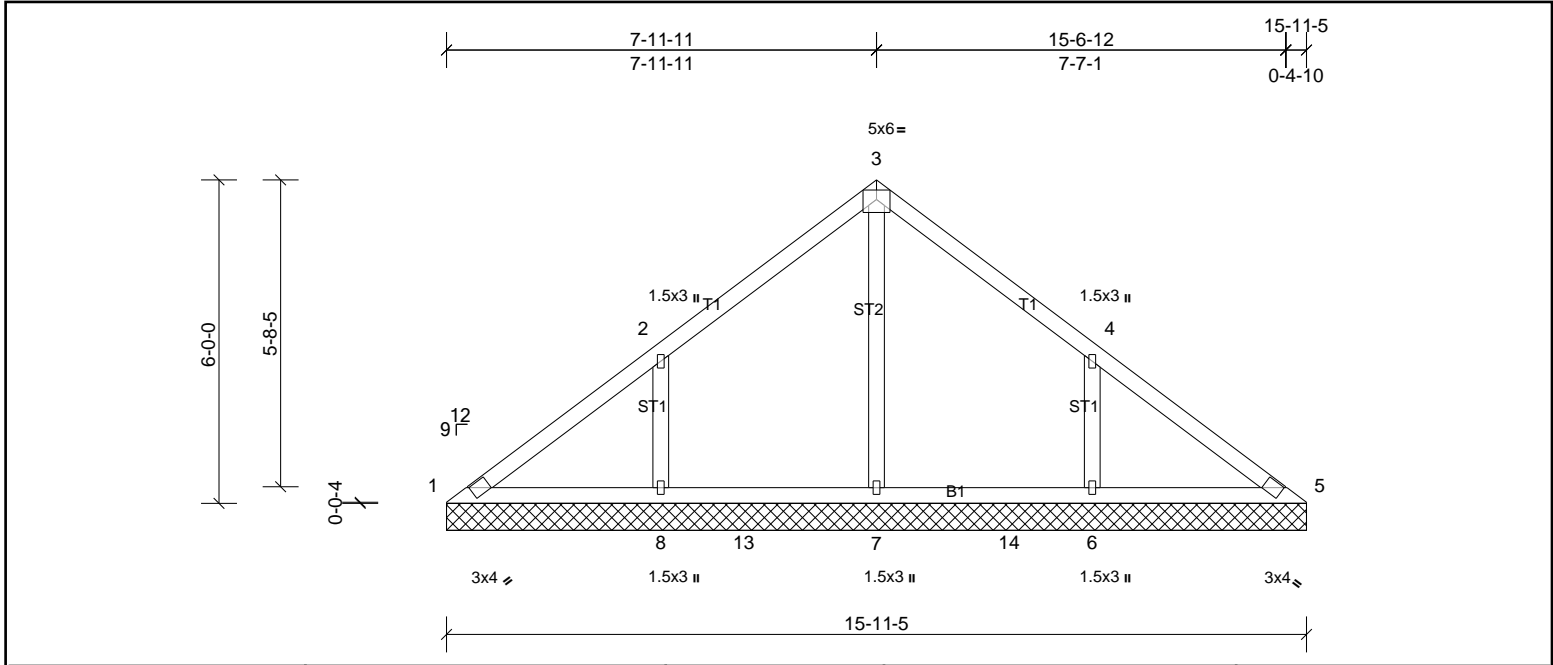
Job 72405466	Truss V6	Truss Type Truss	Qty 1	Ply 1	Professional Bldrs / Apex Craftsman RF Job Reference (optional)
-----------------	-------------	---------------------	----------	----------	--

UFP Mid Atlantic LLC, 5631 S. NC 62, Burlington, NC, r thomas

Run: 8.62 S Sep 22 2022 Print: 8.620 S Sep 22 2022 MiTek Industries, Inc. Thu Feb 22 16:07:56

Page: 1

ID:1wmg2vlaHAud1in9I9avGfyymE3-0OZ84nRNtyjQErDdWucpVhKewNYWCbvA71FtpSziYXH



Loading	(psf)	Spacing	2-0-0	CSI	DEFL	in	(loc)	l/defl	L/d	PLATES	GRIP	
TCLL (roof)	20.0	Plate Grip DOL	1.15	TC	0.23	Vert(LL)	n/a	-	n/a	999	MT20	244/190
TCDL	10.0	Lumber DOL	1.15	BC	0.15	Vert(TL)	n/a	-	n/a	999		
BCLL	0.0*	Rep Stress Incr	YES	WB	0.17	Horiz(TL)	0.00	5	n/a	n/a		
BCDL	10.0	Code	IRC2015/TPI2014	Matrix-MSH							Weight: 67 lb	FT = 20%

LUMBER	BRACING
TOP CHORD 2x4 SP No.2	TOP CHORD Structural wood sheathing directly applied or 10-0-0 oc purlins.
BOT CHORD 2x4 SP No.2	BOT CHORD Rigid ceiling directly applied or 6-0-0 oc bracing.
OTHERS 2x4 SP No.3	

REACTIONS
All bearings 15-11-5.
(lb) - Max Horiz 1=150 (LC 7)
Max Uplift All uplift 100 (lb) or less at joint(s) 1 except 6=177 (LC 11), 8=180 (LC 10)
Max Grav All reactions 250 (lb) or less at joint(s) 1, 5 except 6=421 (LC 18), 7=441 (LC 17), 8=424 (LC 17)

FORCES
(lb) - Max. Comp./Max. Ten. - All forces 250 (lb) or less except when shown.

WEBS
3-7=276/4, 2-8=300/213, 4-6=300/212

- NOTES**
- Unbalanced roof live loads have been considered for this design.
  - Wind: ASCE 7-10; Vult=130mph (3-second gust) Vasd=103mph; TCCL=6.0psf; BCDL=6.0psf; h=35ft; Cat. II; Exp B; Enclosed; MWFRS (envelope) exterior zone and C-C Exterior (2) zone; cantilever left and right exposed; end vertical left and right exposed; C-C for members and forces & MWFRS for reactions shown; Lumber DOL=1.60 plate grip DOL=1.60
  - Gable requires continuous bottom chord bearing.
  - This truss has been designed for a 10.0 psf bottom chord live load nonconcurrent with any other live loads.
  - \* This truss has been designed for a live load of 20.0psf on the bottom chord in all areas where a rectangle 3-06-00 tall by 2-00-00 wide will fit between the bottom chord and any other members, with BCDL = 10.0psf.
  - Provide mechanical connection (by others) of truss to bearing plate capable of withstanding 100 lb uplift at joint(s) 1 except (jt=lb) 8=179, 6=177.
  - This truss is designed in accordance with the 2015 International Residential Code sections R502.11.1 and R802.10.2 and referenced standard ANSI/TPI 1.



This design is based upon parameters shown, and is for an individual building component to be installed and loaded vertically. Applicability of design parameters and proper incorporation of component is responsibility of the Building Designer. Building Designer shall verify all design information on this sheet for conformance with conditions and requirements of the specific building and governing codes and ordinances. Building Designer accepts responsibility for the correctness or accuracy of the design information as it may relate to a specific building. Certification is valid only when truss is fabricated by a UFPI plant. Bracing shown is for lateral support of truss members only and does not replace erection and permanent bracing. Refer to Building Component Safety Information (BCSI) for general guidance regarding storage, erection and bracing available from SBCA and Truss Plate Institute.



Job 72405466	Truss V7	Truss Type Truss	Qty 1	Ply 1	Professional Bldrs / Apex Craftsman RF Job Reference (optional)
-----------------	-------------	---------------------	----------	----------	--

UFPI Mid Atlantic LLC, 5631 S. NC 62, Burlington, NC, r thomas

Run: 8.62 S Sep 22 2022 Print: 8.620 S Sep 22 2022 MiTek Industries, Inc. Thu Feb 22 16:07:56

Page: 1

ID:1wmg2vlaHAud1in9i9avGfyymE3-0OZ84nRNtyjQErDdWucpVhKcGNX7CYKA71FtpSziYXH

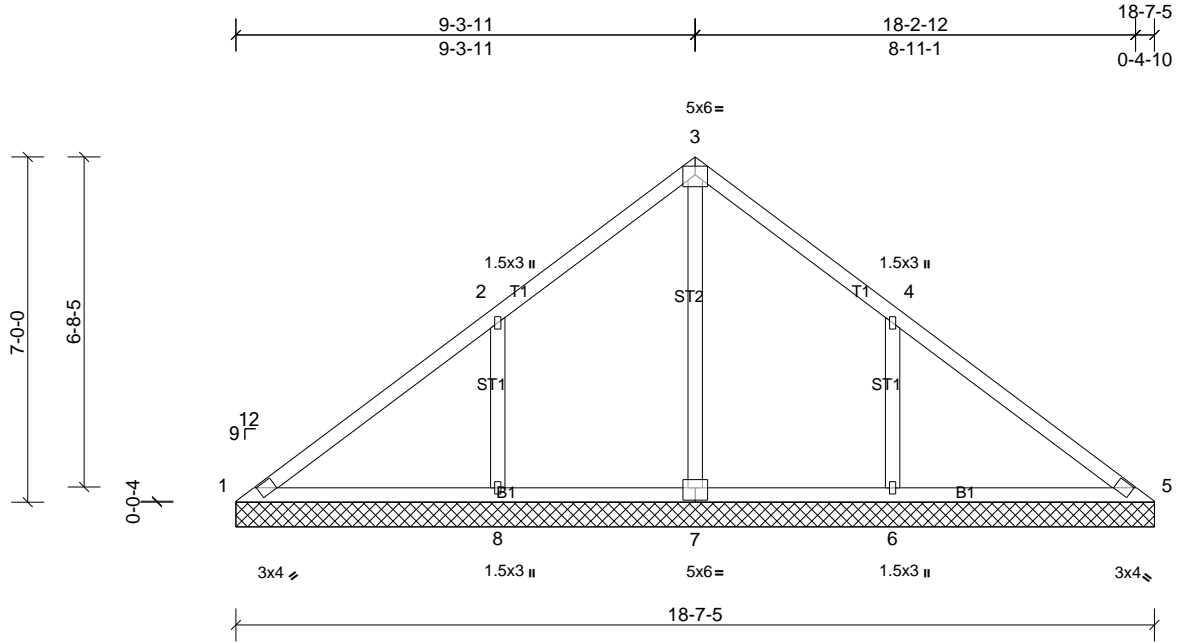


Plate Offsets (X, Y): [7:0-3-0,0-3-0]

Loading	(psf)	Spacing	2-0-0	CSI	DEFL	in	(loc)	l/defl	L/d	PLATES	GRIP	
TCLL (roof)	20.0	Plate Grip DOL	1.15	TC	0.34	Vert(LL)	n/a	-	n/a	999	MT20	244/190
TCDL	10.0	Lumber DOL	1.15	BC	0.24	Vert(TL)	n/a	-	n/a	999		
BCLL	0.0*	Rep Stress Incr	YES	WB	0.34	Horiz(TL)	0.00	5	n/a	n/a		
BCDL	10.0	Code	IRC2015/TPI2014	Matrix-MSH							Weight: 81 lb	FT = 20%

**LUMBER**  
 TOP CHORD 2x4 SP No.2  
 BOT CHORD 2x4 SP No.2  
 OTHERS 2x4 SP No.3

**BRACING**  
 TOP CHORD Structural wood sheathing directly applied or 10-0-0 oc purlins.  
 BOT CHORD Rigid ceiling directly applied or 6-0-0 oc bracing.

**REACTIONS**  
 All bearings 18-7-5.  
 (lb) - Max Horiz 1=-176 (LC 6)  
 Max Uplift All uplift 100 (lb) or less at joint(s) 1 except 6=-214 (LC 11), 8=-216 (LC 10)  
 Max Grav All reactions 250 (lb) or less at joint(s) 1, 5 except 6=541 (LC 18), 7=545 (LC 17), 8=544 (LC 17)

**FORCES**  
 (lb) - Max. Comp./Max. Ten. - All forces 250 (lb) or less except when shown.  
 TOP CHORD 1-2=-163/315, 4-5=-118/270  
 WEBS 3-7=-393/11, 2-8=-353/248, 4-6=-353/247

- NOTES**
- 1) Unbalanced roof live loads have been considered for this design.
  - 2) Wind: ASCE 7-10; Vult=130mph (3-second gust) Vasd=103mph; TC DL=6.0psf; BCDL=6.0psf; h=35ft; Cat. II; Exp B; Enclosed; MWFRS (envelope) exterior zone and C-C Exterior (2) zone; cantilever left and right exposed; end vertical left and right exposed; C-C for members and forces & MWFRS for reactions shown; Lumber DOL=1.60 plate grip DOL=1.60
  - 3) Gable requires continuous bottom chord bearing.
  - 4) This truss has been designed for a 10.0 psf bottom chord live load nonconcurrent with any other live loads.
  - 5) \* This truss has been designed for a live load of 20.0psf on the bottom chord in all areas where a rectangle 3-06-00 tall by 2-00-00 wide will fit between the bottom chord and any other members, with BCDL = 10.0psf.
  - 6) Provide mechanical connection (by others) of truss to bearing plate capable of withstanding 100 lb uplift at joint(s) 1 except (jt=lb) 8=216, 6=213.
  - 7) This truss is designed in accordance with the 2015 International Residential Code sections R502.11.1 and R802.10.2 and referenced standard ANSI/TPI 1.



This design is based upon parameters shown, and is for an individual building component to be installed and loaded vertically. Applicability of design parameters and proper incorporation of component is responsibility of the Building Designer. Building Designer shall verify all design information on this sheet for conformance with conditions and requirements of the specific building and governing codes and ordinances. Building Designer accepts responsibility for the correctness or accuracy of the design information as it may relate to a specific building. Certification is valid only when truss is fabricated by a UFPI plant. Bracing shown is for lateral support of truss members only and does not replace erection and permanent bracing. Refer to Building Component Safety Information (BCSI) for general guidance regarding storage, erection and bracing available from SBCA and Truss Plate Institute.



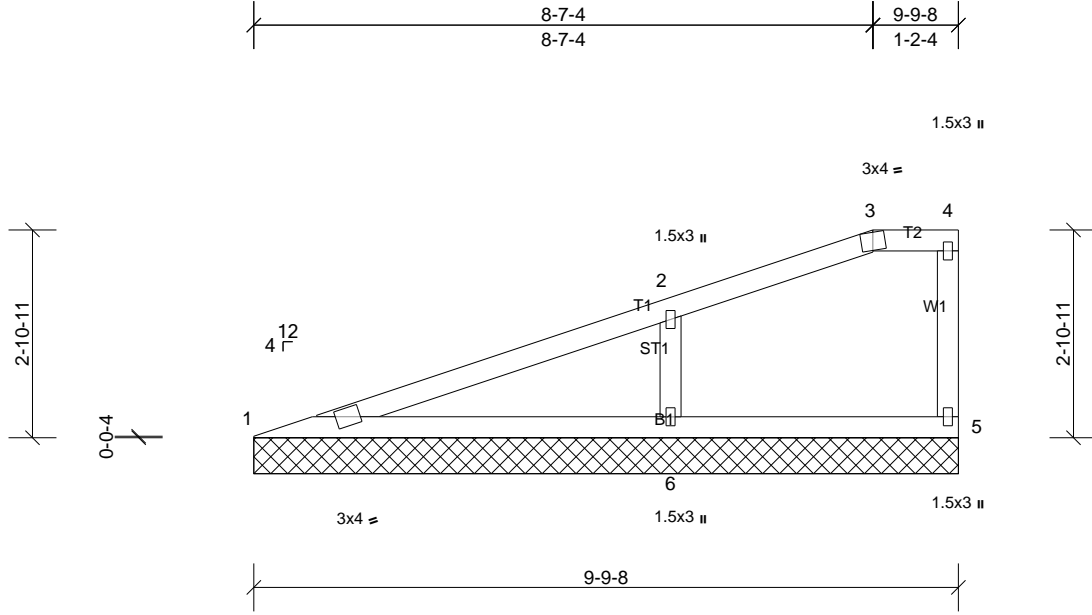
Job 72405466	Truss V8	Truss Type Truss	Qty 1	Ply 1	Professional Bldrs / Apex Craftsman RF Job Reference (optional)
-----------------	-------------	---------------------	----------	----------	--

UFP Mid Atlantic LLC, 5631 S. NC 62, Burlington, NC, r thomas

Run: 8.62 S Sep 22 2022 Print: 8.620 S Sep 22 2022 MiTek Industries, Inc. Thu Feb 22 16:07:56

Page: 1

ID:KGhKWInzeJndNnpVc7CY27yymDy-0OZ84nRNtjQErDdWucpVhKcJNVTCcZA71FtpSziYXH



Loading	(psf)	Spacing	2-0-0	CSI	DEFL	in	(loc)	l/defl	L/d	PLATES	GRIP	
TCLL (roof)	20.0	Plate Grip DOL	1.15	TC	0.34	Vert(LL)	n/a	-	n/a	999	MT20	244/190
TCDL	10.0	Lumber DOL	1.15	BC	0.34	Vert(TL)	n/a	-	n/a	999		
BCLL	0.0*	Rep Stress Incr	YES	WB	0.07	Horiz(TL)	0.01	5	n/a	n/a		
BCDL	10.0	Code	IRC2015/TPI2014	Matrix-MSH							Weight: 34 lb	FT = 20%

LUMBER	BRACING
TOP CHORD 2x4 SP No.2	TOP CHORD Structural wood sheathing directly applied or 6-0-0 oc purlins, except end
BOT CHORD 2x4 SP No.2	verticals, and 2-0-0 oc purlins (6-0-0 max.); 3-4.
WEBS 2x4 SP No.3	BOT CHORD Rigid ceiling directly applied or 6-0-0 oc bracing.
OTHERS 2x4 SP No.3	

REACTIONS	(lb/size)
	1=189/9-9-8, (min. 0-1-8), 5=90/9-9-8, (min. 0-1-8), 6=493/9-9-8, (min. 0-1-8)
	Max Horiz 1=111 (LC 6)
	Max Uplift 1=-15 (LC 6), 5=-22 (LC 6), 6=-121 (LC 6)

FORCES	(lb) - Max. Comp./Max. Ten. - All forces 250 (lb) or less except when shown.
TOP CHORD	1-2=-411/56
BOT CHORD	1-6=-181/384
WEBS	2-6=-331/227

- NOTES**
- 1) Wind: ASCE 7-10; Vult=130mph (3-second gust) Vasd=103mph; TCDL=6.0psf; BCDL=6.0psf; h=35ft; Cat. II; Exp B; Enclosed; MWFRS (envelope) exterior zone and C-C Exterior (2) zone; cantilever left and right exposed; end vertical left exposed; C-C for members and forces & MWFRS for reactions shown; Lumber DOL=1.60 plate grip DOL=1.60
  - 2) Truss designed for wind loads in the plane of the truss only.
  - 3) Provide adequate drainage to prevent water ponding.
  - 4) Gable requires continuous bottom chord bearing.
  - 5) Gable studs spaced at 4-0-0 oc.
  - 6) This truss has been designed for a 10.0 psf bottom chord live load nonconcurrent with any other live loads.
  - 7) \* This truss has been designed for a live load of 20.0psf on the bottom chord in all areas where a rectangle 3-06-00 tall by 2-00-00 wide will fit between the bottom chord and any other members.
  - 8) Provide mechanical connection (by others) of truss to bearing plate capable of withstanding 22 lb uplift at joint 5, 15 lb uplift at joint 1 and 121 lb uplift at joint 6.
  - 9) This truss is designed in accordance with the 2015 International Residential Code sections R502.11.1 and R802.10.2 and referenced standard ANSI/TPI 1.
  - 10) Graphical purlin representation does not depict the size or the orientation of the purlin along the top and/or bottom chord.



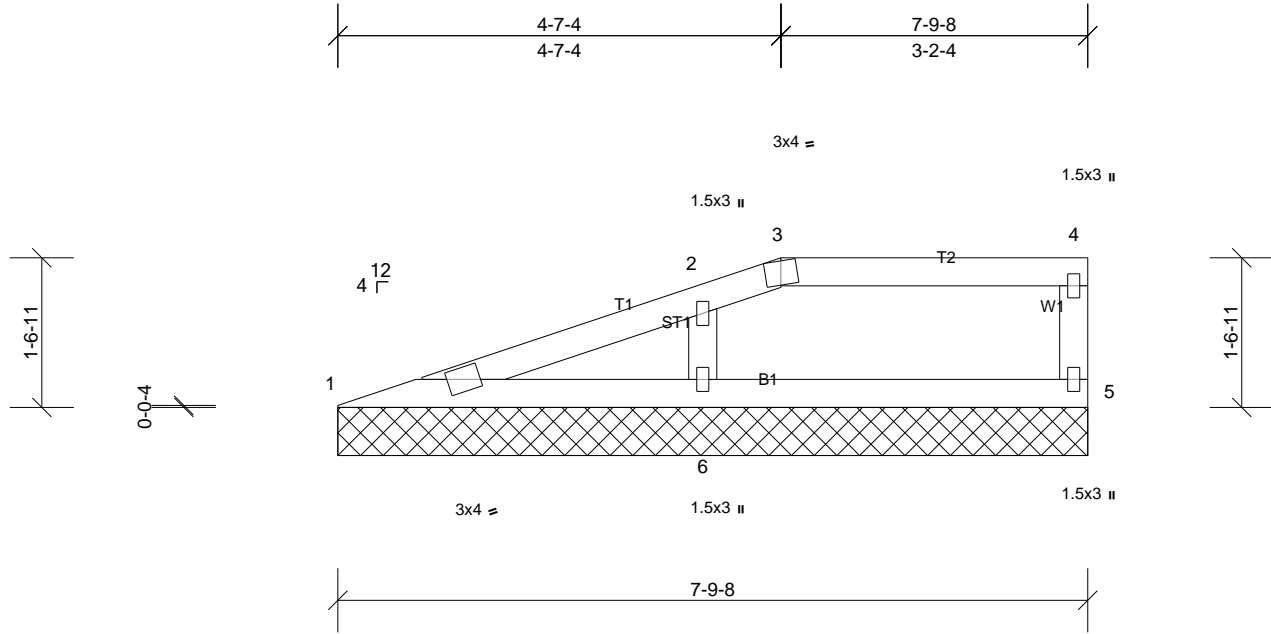
Job 72405466	Truss V9	Truss Type Truss	Qty 1	Ply 1	Professional Bldrs / Apex Craftsman RF Job Reference (optional)
-----------------	-------------	---------------------	----------	----------	--

UFP Mid Atlantic LLC, 5631 S. NC 62, Burlington, NC, r thomas

Run: 8.62 S Sep 22 2022 Print: 8.620 S Sep 22 2022 MiTek Industries, Inc. Thu Feb 22 16:07:56

Page: 1

ID:KGhKWInZeJndNnpVc7CY27yymDy-00Z84nRNtjyQErDdWucpVhKfsNYdCdIA71FtpSziYXH



Loading	(psf)	Spacing	2-0-0	CSI	DEFL	in	(loc)	l/defl	L/d	PLATES	GRIP
TCLL (roof)	20.0	Plate Grip DOL	1.15	TC	0.17	Vert(LL)	n/a	-	n/a	999	244/190
TCDL	10.0	Lumber DOL	1.15	BC	0.14	Vert(TL)	n/a	-	n/a	999	
BCLL	0.0*	Rep Stress Incr	YES	WB	0.06	Horiz(TL)	0.00	5	n/a	n/a	
BCDL	10.0	Code	IRC2015/TPI2014	Matrix-MSH						Weight: 25 lb	FT = 20%

**LUMBER**

TOP CHORD 2x4 SP No.2  
 BOT CHORD 2x4 SP No.2  
 WEBS 2x4 SP No.3  
 OTHERS 2x4 SP No.3

**BRACING**

TOP CHORD Structural wood sheathing directly applied or 6-0-0 oc purlins, except end verticals, and 2-0-0 oc purlins (6-0-0 max.); 3-4.  
 BOT CHORD Rigid ceiling directly applied or 10-0-0 oc bracing.

**REACTIONS**

(lb/size) 1=125/7-9-8, (min. 0-1-8), 5=128/7-9-8, (min. 0-1-8), 6=358/7-9-8, (min. 0-1-8)  
 Max Horiz 1=57 (LC 6)  
 Max Uplift 1=-16 (LC 10), 5=30 (LC 7), 6=83 (LC 6)

**FORCES**

(lb) - Max. Comp./Max. Ten. - All forces 250 (lb) or less except when shown.

**NOTES**

- 1) Wind: ASCE 7-10; Vult=130mph (3-second gust) Vasd=103mph; TCCL=6.0psf; BCDL=6.0psf; h=35ft; Cat. II; Exp B; Enclosed; MWFRS (envelope) exterior zone and C-C Exterior (2) zone; cantilever left and right exposed; end vertical left exposed; C-C for members and forces & MWFRS for reactions shown; Lumber DOL=1.60 plate grip DOL=1.60
- 2) Provide adequate drainage to prevent water ponding.
- 3) Gable requires continuous bottom chord bearing.
- 4) This truss has been designed for a 10.0 psf bottom chord live load nonconcurrent with any other live loads.
- 5) \* This truss has been designed for a live load of 20.0psf on the bottom chord in all areas where a rectangle 3-06-00 tall by 2-00-00 wide will fit between the bottom chord and any other members.
- 6) Provide mechanical connection (by others) of truss to bearing plate capable of withstanding 30 lb uplift at joint 5, 16 lb uplift at joint 1 and 83 lb uplift at joint 6.
- 7) This truss is designed in accordance with the 2015 International Residential Code sections R502.11.1 and R802.10.2 and referenced standard ANSI/TPI 1.
- 8) Graphical purlin representation does not depict the size or the orientation of the purlin along the top and/or bottom chord.



This design is based upon parameters shown, and is for an individual building component to be installed and loaded vertically. Applicability of design parameters and proper incorporation of component is responsibility of the Building Designer. Building Designer shall verify all design information on this sheet for conformance with conditions and requirements of the specific building and governing codes and ordinances. Building Designer accepts responsibility for the correctness or accuracy of the design information as it may relate to a specific building. Certification is valid only when truss is fabricated by a UFPI plant. Bracing shown is for lateral support of truss members only and does not replace erection and permanent bracing. Refer to Building Component Safety Information (BCSI) for general guidance regarding storage, erection and bracing available from SBCA and Truss Plate Institute.

