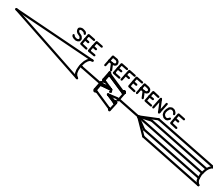


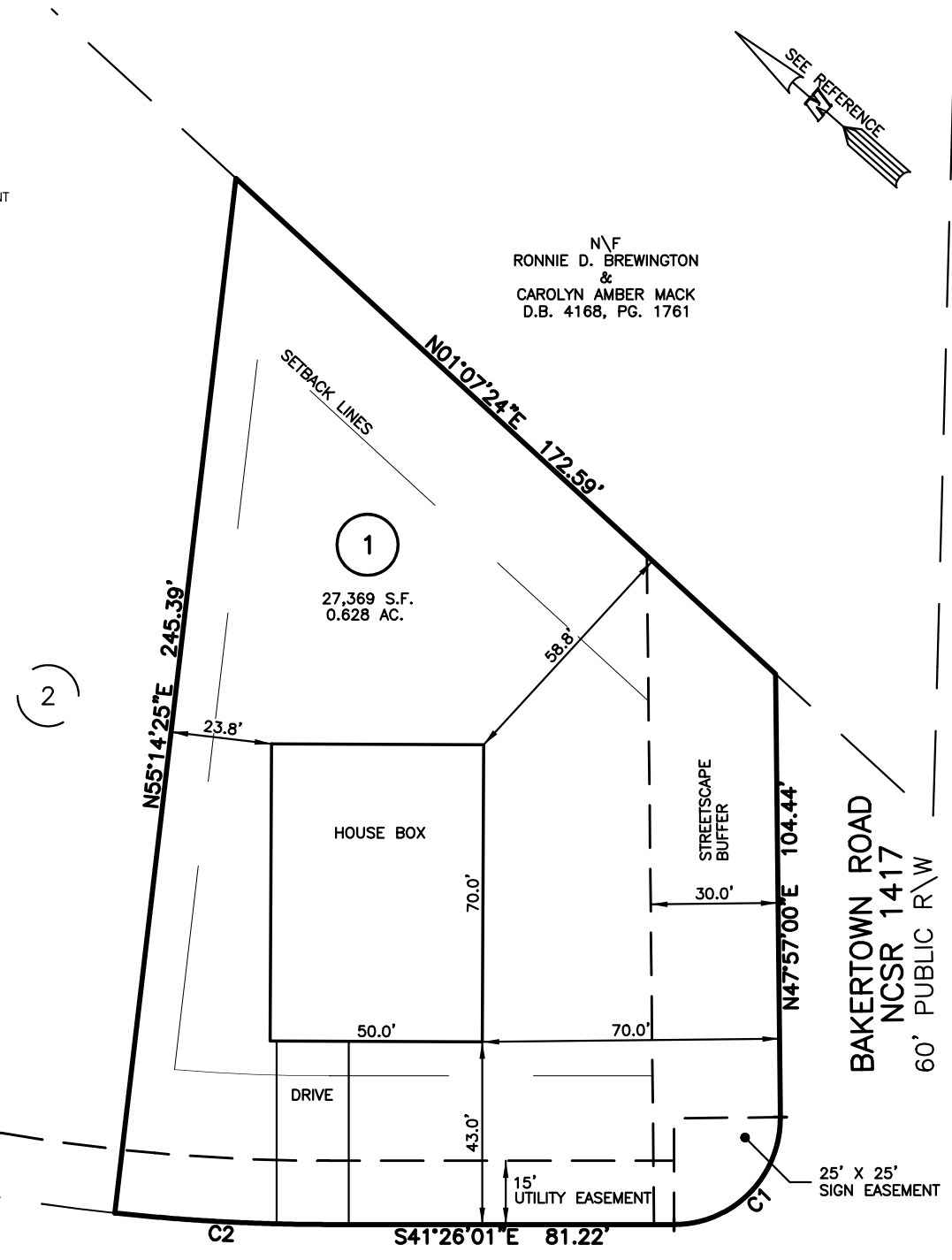
NEW HOME INC., LLC
 20 YATES MILL DRIVE
 LOT 1, WOODBRIDGE SOUTH
 BUCKHORN TOWNSHIP, HARNETT COUNTY, NORTH CAROLINA



LEGEND

- △ AIR CONDITIONER
- BC BACK OF CURB
- BFP BACK FLOW PREVENTER
- CLEANOUT
- CURB INLET
- DHS DRILL HOLE SET
- ECM EXISTING CONCRETE MONUMENT
- EDH EXISTING DRILL HOLE
- EIS EXISTING IRON STAKE
- EIP EXISTING IRON PIPE
- EM ELECTRIC METER
- EPK EXISTING PK NAIL
- ES ELECTRIC STUB
- FLS FLARED END SECTION
- FH FIRE HYDRANT
- FOP FIBER OPTIC PEDESTAL
- GM GAS METER
- GUY GUY
- INV. INVERT
- IPS IRON PIPE SET
- IRS IRON ROD SET
- LP LIGHT POLE
- MNS MAGNETIC NAIL SET
- MS MANHOLE SANITARY SEWER
- MSW MANHOLE STORM SEWER
- OHV OVERHEAD WIRES
- PKS PK NAIL SET
- PNS POINT NOT SET
- RRS RAIL ROAD SPIKE
- TEP TELEPHONE PEDESTAL
- TRF TRANSFORMER
- CTV CABLE TV PEDESTAL
- UP UTILITY POLE
- WM WATER METER
- WV WATER VALVE
- YI YARD INLET
- FM FIELD MEASUREMENT

N\F
 RONNIE D. BREWINGTON
 &
 CAROLYN AMBER MACK
 D.B. 4168, PG. 1761



YATES MILL DRIVE
 50' PUBLIC R/W & UTILITY EASEMENT

NUM	RADIUS	ARC	DELTA	CHORD BRG	CHORD
C1	25.00'	39.54'	90°37'00"	N86°44'31"W	35.55'
C2	475.00'	50.65'	6°06'34"	S38°22'44"E	50.63'

REFERENCES:
 P.B. 2023, PGS 92-94

SETBACK INFO

FRONT:	35'
REAR:	25'
SIDES:	10'
CORNER SIDE:	20'



SCALE: 1" = 40'

NOTES

1. THIS SURVEY SUBJECT TO ANY FACTS THAT MAY BE DISCLOSED BY A FULL AND ACCURATE TITLE SEARCH.
2. THIS MAP MAY NOT BE A CERTIFIED SURVEY AND HAS NOT BEEN REVIEWED BY A LOCAL GOVERNMENT AGENCY FOR COMPLIANCE WITH ANY APPLICABLE LAND DEVELOPMENT REGULATIONS AND HAS NOT BEEN REVIEWED FOR COMPLIANCE WITH RECORDING REQUIREMENTS FOR PLATS.

FOR REPRESENTATIVE PURPOSES ONLY
 NOT FOR PERMITTING, RECORDATION,
 CONVEYANCE OR SALES

HOUSE FIT
 ONLY

DATE: DEC. 06, 2023

F.B. _____

RWK, PA
 ENGINEERING ~ SURVEYING
 CORPORATE LICENSE: C-1771
 101 W. MAIN ST., SUITE 202
 GARNER, NC 27529
 PHONE (919) 779-4854
 FAX (919) 779-4056