

**THIS LAYOUT IS INTENDED FOR THE PURPOSE OF TRUSS LOCATION AND PLACEMENT ONLY. REFER TO THE BUILDING PLANS FOR ACTUAL BUILDING CONSTRUCTION.**



DEDICATED TO QUALITY AND EXCELLENCE  
200 EMMETT ROAD  
DUNN, NORTH CAROLINA 28334  
PHONE: 910-892-8400

PROJECT: **LOT 166 BIRCHWOOD GROVE**

CUSTOMER: **KB HOME**

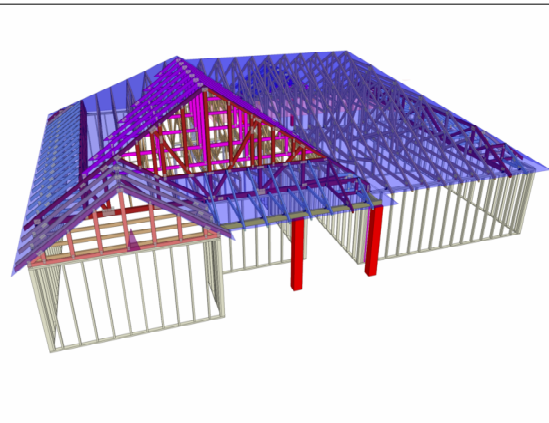
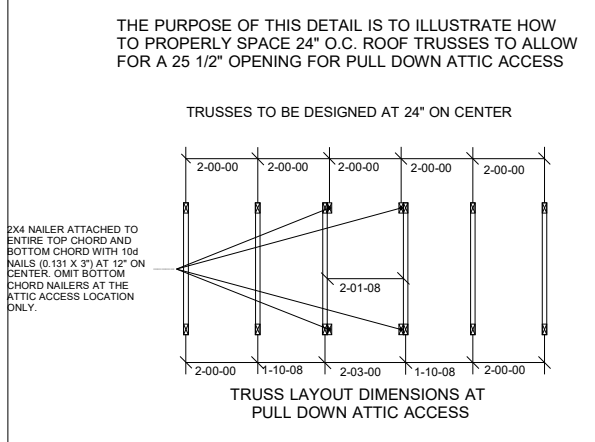
MODEL: **150-1446 - ELEVATION C - VOLUME CEILING - 10X10 SCREENED COVERED PORCH - GR**

QUOTE #: **06467**    PRINT DATE: **11/8/2023**    DRAWN BY: **MIKE BOLT**    SCALE: **N.T.S**

TOP LIVE LOAD:  
TOP DEAD LOAD:  
BOTTOM DEAD LOAD:  
WIND SPEED:

GENERAL NOTES:  
DO NOT CUT OR MODIFY TRUSSES  
TRUSSES ARE SPACED 24" ON CENTER UNLESS OTHERWISE NOTED  
REFER TO THE INDIVIDUAL TRUSS DESIGN DRAWINGS FOR THE LOCATION OF LATERAL BRACING AND MULTI-PLY CONNECTION REQUIREMENTS.  
PER ANSI TPI 1-2002 THE TRUSS ENGINEER IS RESPONSIBLE FOR TRUSS TO TRUSS CONNECTIONS AND TRUSS PLY TO PLY CONNECTIONS. THIS TRUSS PLACEMENT PLAN RECOMMENDS TRUSS TO BEARING CONNECTIONS AND TRUSS TO BEAM CONNECTIONS WHICH SHALL BE REVIEWED BY THE BUILDING DESIGNER. IT IS THE RESPONSIBILITY OF THE BUILDING DESIGNER TO RESOLVE ALL ROOF FORCES ADEQUATELY TO THE FOUNDATION.

Truss Connector Total List		
Qty	Product	Manuf
1	HHUS26-2	Simpson
12	HUS26	Simpson
1	LUS24	Simpson



1st Level Roof Area 2691.54	2nd Level Roof Area 0
--------------------------------	--------------------------

