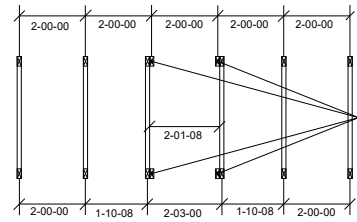


**THIS LAYOUT IS INTENDED FOR THE PURPOSE OF TRUSS LOCATION AND PLACEMENT ONLY. REFER TO THE BUILDING PLANS FOR ACTUAL BUILDING CONSTRUCTION.**

THE PURPOSE OF THIS DETAIL IS TO ILLUSTRATE HOW TO PROPERLY SPACE 24" O.C. ROOF TRUSSES TO ALLOW FOR A 25 1/2" OPENING FOR PULL DOWN ATTIC ACCESS

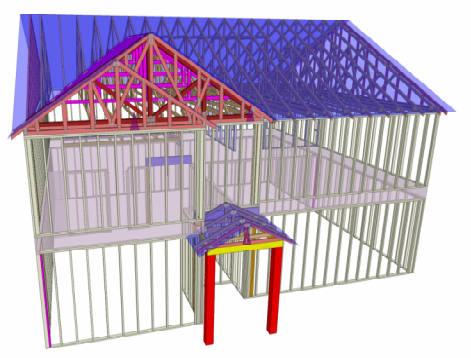
TRUSSES TO BE DESIGNED AT 24" ON CENTER



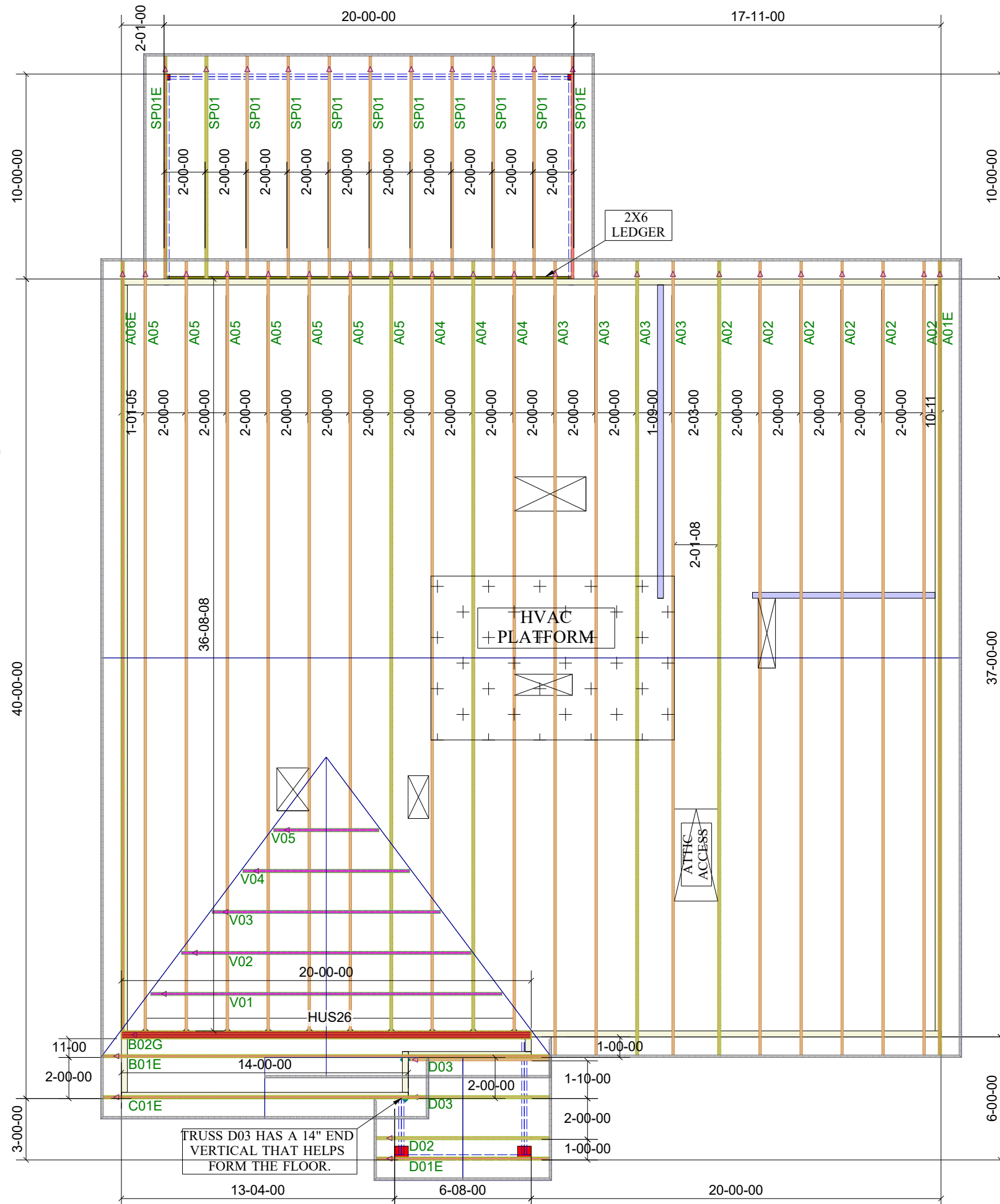
TRUSS LAYOUT DIMENSIONS AT PULL DOWN ATTIC ACCESS

2x4 NAILER ATTACHED TO ENTIRE TOP CHORD AND BOTTOM CHORD WITH 10d NAILS @ 12" X 37" AT 12" ON CENTER. OMIT BOTTOM CHORD NAILERS AT THE ATTIC ACCESS LOCATION ONLY.

Truss Connector Total List		
Manuf	Product	Qty
MiTek	HUS26	10



1st Level Roof Area 0  
2nd Level Roof Area 0



DEDICATED TO QUALITY AND EXCELLENCE  
200 EMMETT ROAD  
DUNN, NORTH CAROLINA 28334  
PHONE: 910-892-8400

PROJECT: LOT 60 BIRCHWOOD GROVE

CUSTOMER: KB HOME

MODEL: 240-2539 - ELEVATION A - 10X20 SCREENED COVERED PATIO

QUOTE #: 39217  
PRINT DATE: 9/12/2023  
DRAWN BY: Mike Bolt  
SCALE: N.T.S

TOP LIVE LOAD: 20  
TOP DEAD LOAD: 10  
BOTTOM DEAD LOAD: 10  
WIND SPEED: 130

GENERAL NOTES:

- DO NOT CUT OR MODIFY TRUSSES
- TRUSSES ARE SPACED 24" ON CENTER UNLESS OTHERWISE NOTED
- REFER TO THE INDIVIDUAL TRUSS DESIGN DRAWINGS FOR THE LOCATION OF LATERAL BRACING AND MULTI-PLY CONNECTION REQUIREMENTS.
- PER ANSI TPI 1-2002 THE TRUSS ENGINEER IS RESPONSIBLE FOR TRUSS TO TRUSS CONNECTIONS AND TRUSS PLY TO PLY CONNECTIONS. THIS TRUSS PLAN RECOMMENDS TRUSS TO BEARING CONNECTIONS AND TRUSS TO BEAM CONNECTIONS WHICH SHALL BE REVIEWED BY THE BUILDING DESIGNER. IT IS THE RESPONSIBILITY OF THE BUILDING DESIGNER TO RESOLVE ALL ROOF FORCES ADEQUATELY TO THE FOUNDATION.