

DN01 DO NOT cut, notch or drill flanges

DN04 DO NOT cut holes near bearing support

Minimum distance per Boise joist hole chart.

F05 23/32" min. plywood/OSB or rimboard closure

Nail with 8d nails into each flange. BCI® joist blocking required for cantilever.

F05-A

Inverted hanger. BCI (A/B) joist blocking required for cantilever. 8d nails @ 6" o.c.

F06

Load bearing wall above (stacked over wall below). BCI® Joist Blocking. See Boise literature for vertical load capacity.

F16-C

Web stiffeners are not required when top flange is laterally supported by joist hanger. 0.6 X Joist depth.

F07

See Boise literature for vertical load capacity. Nail Boise Rimboard to BCI® joist with 8d nail into each flange. Boise I-Joist can be offset up to 3" to avoid vertical plumbing.

F08

Solid block all posts from above to bearing below.

F08-A

Solid block all posts from above to bearing below.

F09

Load bearing wall above (stacked over wall below). 2x block. Backer block (12" wide min.) Nail with 10-10d nails. Install tight to top flange.

F10

Joist hanger. Filler block. Nail with 10-10d nails. Backer block required where top mount hanger load exceeds 250 lbs. Install tight to top flange.

F16-E

Stiffeners are required on both sides of the web when: - Hangers with side nailing. - Any hanger with sides not containing the top flange of the joist. - Web stiffener nailed with 3 - 3" (10d) nails for 9 1/2" joists, and 5 - 3" (10d) nails for 14" & 16" joists. For Point Load from above: Install web stiffeners tight against top flange with 1/8" gap between bottom flange.

F58-B Double BCI® Joist Connection

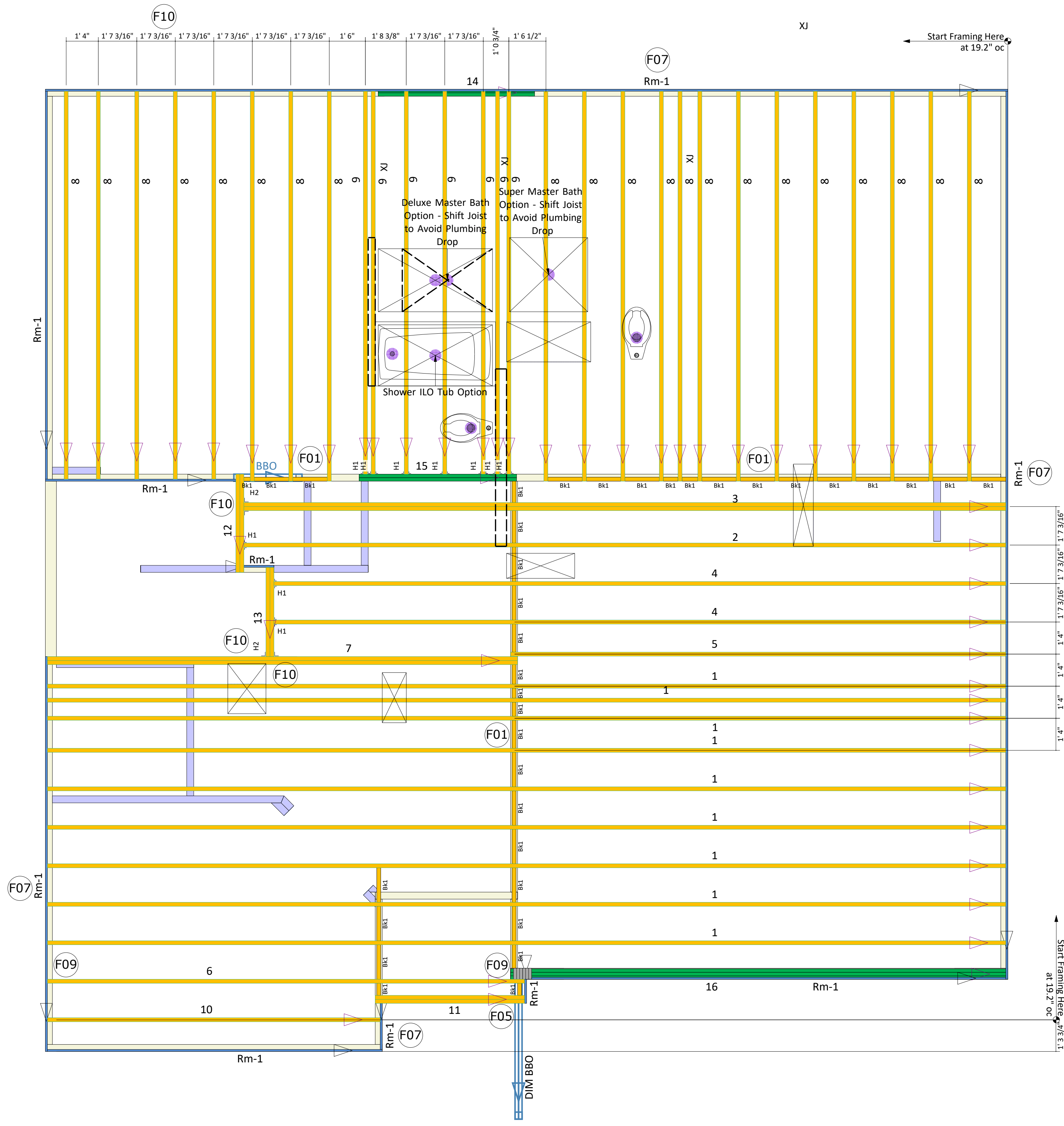
Filler Block (see chart). Web-Filler Nailing 12" OC. Connection valid for all applications. Contact Boise EWP Engineering for specific conditions.

Backer and Filler Block Dimensions		
BCI® Joist Series	Backer Block Thickness	Filler Block Thickness
5000s 1.8	3/4" or 7/8" wood panels	Two 3/4" wood panels or 2 x ...
6000s 1.8	1-1/8" or two 1/2" wood panels	2 x ... + 5/8" or 3/4" wood panel
6500s 1.8	1-1/8" or two 1/2" wood panels	2 x ... + 5/8" or 3/4" wood panel
60 2.0	1-1/8" or two 1/2" wood panels	2 x ... + 5/8" or 3/4" wood panel
90 2.0	2 x ... lumber	Double 2 x ... lumber

Second Floor Layout

Products					
PlotID	Length	Product	Plies	Net Qty	Fab Type
1	40' 0"	14" BCI® 5000s-1.8	1	9	MFD
2	32' 0"	14" BCI® 5000s-1.8	1	1	MFD
3	32' 0"	14" BCI® 5000s-1.8	2	2	MFD
4	31' 0"	14" BCI® 5000s-1.8	1	2	MFD
5	21' 0"	14" BCI® 5000s-1.8	1	1	MFD
6	20' 0"	14" BCI® 5000s-1.8	1	1	MFD
7	20' 0"	14" BCI® 5000s-1.8	2	2	MFD
8	17' 0"	14" BCI® 5000s-1.8	1	21	MFD
9	16' 0"	14" BCI® 5000s-1.8	1	7	MFD
10	14' 0"	14" BCI® 5000s-1.8	1	1	MFD
11	7' 0"	14" BCI® 5000s-1.8	2	2	MFD
12	5' 0"	14" BCI® 5000s-1.8	2	2	MFD
13	4' 0"	14" BCI® 5000s-1.8	2	2	MFD
14	8' 0"	1-3/4" x 9-1/4" VERSA-LAM® LVL 2.1E 3100 SP	2	2	FF
15	8' 0"	1-3/4" x 14" VERSA-LAM® LVL 2.1E 3100 SP	2	2	FF
16	22' 0"	1-3/4" x 16" VERSA-LAM® LVL 2.1E 3100 SP	3	3	FF
Rm-1	12' 0"	1" x 14" BC RIM BOARD OSB	1	13	FF
Bk1	2' 0"	14" BCI® 5000s-1.8	1	22	MFD

Connector Summary			
PlotID	Qty	Manuf	Product
H1	10	Simpson	IUS2.06/14
H2	2	Simpson	MIU4.12/11



Indicates "NO CUT END" === Material to be Trimmed from OTHER END ONLY

***** ANY Concealed Flange Hangers MUST be installed PRIOR to Setting the Carried Members! *****

International Residential Code - R502.8.2 Engineered Wood Products - - - Cuts, notches and holes bored in trusses, laminated veneer lumber, glue-laminated members or I-joists are not permitted unless such penetrations are specifically considered in the design of the member or meet the manufacturers guidelines.

Builder or framer should review this material placement layout prior to beginning construction of floor system. This layout DOES NOT supersede the plan set.

Dimensions to any obstructions are approximate and should be field verified. Any discrepancies will be reported prior to floor installation.

Squash blocks shall be installed under all point loads, and are to be greater than or equal to the dimensions of the post transferring the load from above.

All materials, (EWP, hangers etc.) shall be installed per manufacturer specific installation guides.

Plan Information	
Lot Number:	60 Birchwood Grove
Model:	2539 A
Builder:	KB Home
Boise BC FRAMER II / SAPHIRE Structure	
Plan Date:	03/25/2021
Structural Date:	11/18/2022
Not To Scale	By: CK
Sheet: 2/4	Current Date: 12/06/2022