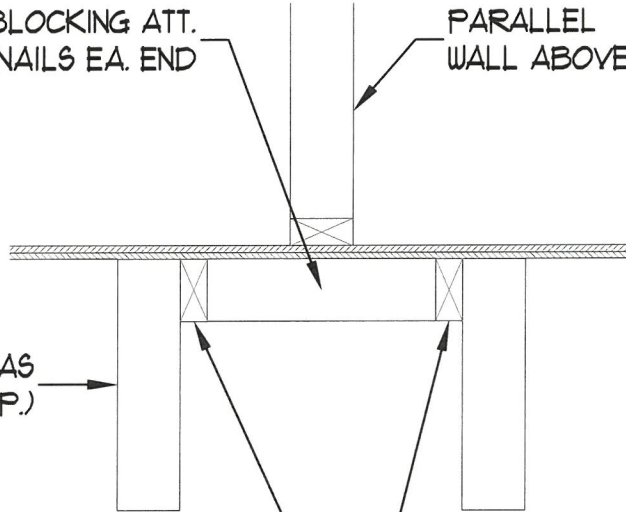


2 x 4 @ 16" O.C. BLOCKING ATT.  
w/ (2) 12d TOE NAILS EA. END

PARALLEL  
WALL ABOVE

FLOOR TRUSSES AS  
SPECIFIED (TYP.)



CONT. 2 x 4 SCAB ATT. TO  
ALL TRUSS MEMBERS w/ (1)  
ROW OF 12d NAILS @ 4" O.C.

AN EXTRA TRUSS IS NOT REQUIRED WHEN FLOOR TRUSSES WITHIN THE NORMAL LAYOUT ARE POSITIONED BENEATH PARALLEL WALLS ABOVE. BY SEALING THE TRUSS DRAWINGS, THE ENGINEER OF RECORD FOR THE TRUSS SYSTEM ACKNOWLEDGES THE TRUSSES ARE DESIGNED FOR ALL IMPOSED LOADS INCLUDING THE ADDED DEAD LOAD OF THE WALL.

### TRUSS BLOCKING DETAIL

(INSTALL 2 x 4 @ 16" O.C. BLOCKING BETWEEN ADJACENT TRUSSES UNDER WALLS PARALLEL TO FLOOR TRUSSES WHERE WALL LENGTH EXCEEDS 1/3 OF TRUSS SPAN. TRUSS DESIGNER TO DESIGN ADJACENT TRUSSES FOR ADDITIONAL LOADING FROM WALLS.)



**J.S. THOMPSON  
ENGINEERING, INC.**  
331 EAST 8TH STREET, SUITE 2100, NC 27601  
PHONE: (919) 766-9919 FAX: (919) 766-9921  
N.C. LICENSE NO. C-1731

TRUSS BLOCKING DETAIL  
DAVIDSON HOMES, LLC

STATE: FEBRUARY 6, 2024  
SCALE: AS NOTED  
DRAWN BY: JAG  
ENGINEERED BY: JAG

SHEET: 2 OF: 2

S-1  
TRUSS DETAIL