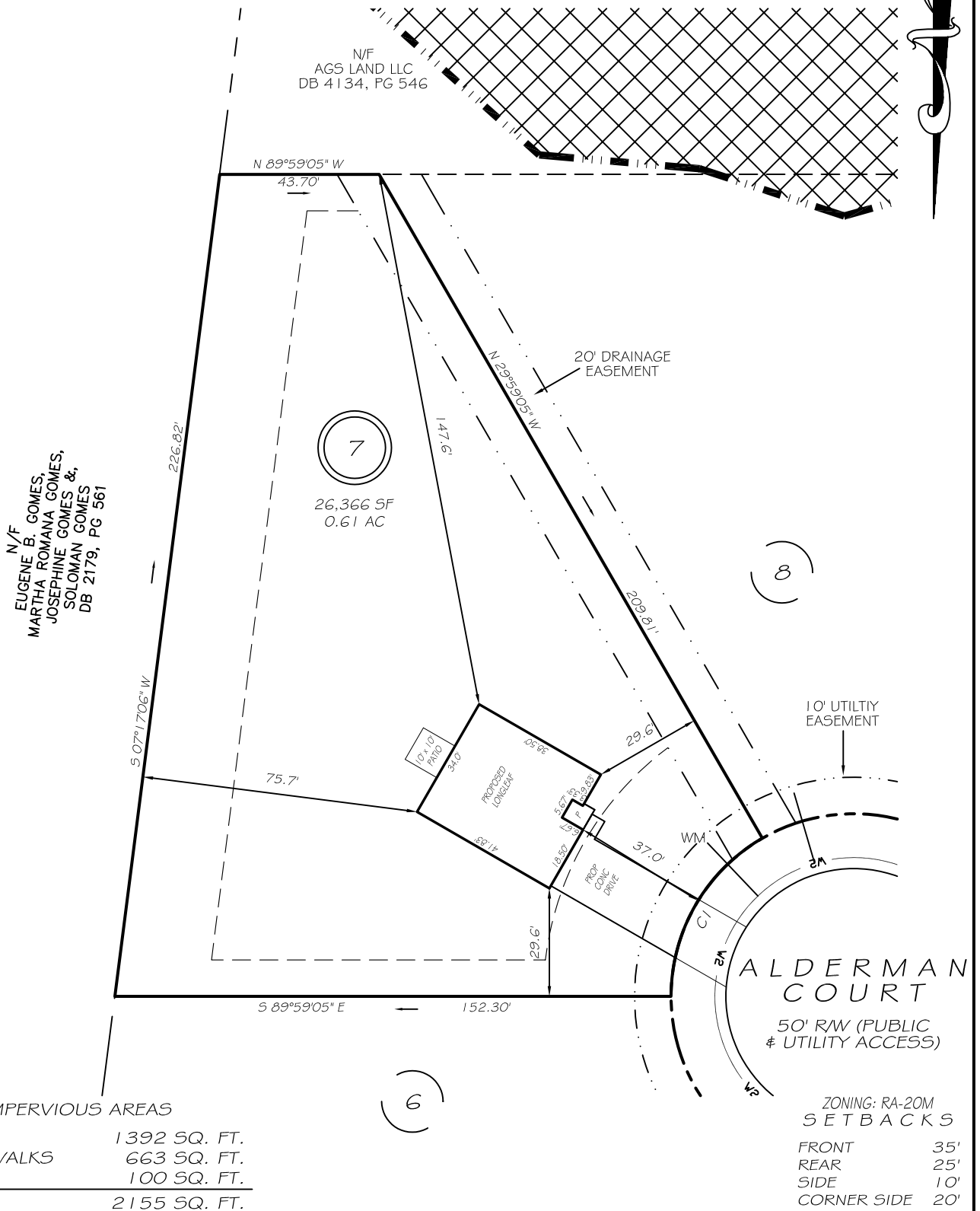


I, MICHAEL P. GRIFFIN, certify that under my direction and supervision this map was drawn from an actual field survey; that the error of closure of the survey as calculated by coordinates is 1: 10,000+; that the area shown hereon was calculated by coordinates.

Witness my hand and seal this day of MONTH 2023.

BK 2023 PAGE 561
HARNETT CO. REGISTRY



N/F
EUGENE B. GOMES,
MARTHA ROMANA GOMES,
JOSEPHINE GOMES &
SOLOMAN GOMES
DB 2179, PG 561

N/F
AGS LAND LLC
DB 4134, PG 546

7
26,366 SF
0.61 AC

8

6

ALDERMAN COURT
50' RW (PUBLIC & UTILITY ACCESS)

ZONING: RA-20M
SETBACKS
FRONT 35'
REAR 25'
SIDE 10'
CORNER SIDE 20'

IMPERVIOUS AREAS

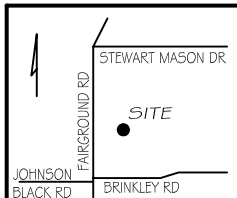
HOUSE	1392 SQ. FT.
DRIVE & WALKS	663 SQ. FT.
PATIO	100 SQ. FT.
TOTAL	2155 SQ. FT.

CI R=50.00' L=52.36' S30°00'55"W 50.00'

PRELIMINARY
NOT FOR RECORDATION,
SALES OR CONVEYANCE

LEGEND

EIP	EXISTING IRON PIPE	FES	FLARED END SECTION
IPS	IRON PIPE SET	WM	WATER METER
R/W	RIGHT OF WAY	CO	CLEAN OUT
N/F	NOW OR FORMERLY	FH	FIRE HYDRANT
EIS	EXISTING IRON STAKE	CB	CATCH BASIN



GLS INC GRIFFIN LAND SURVEYING, INC.
P.O. BOX 148
FUQUAY-VARINA, NC 27526
(919) - 567 - 1963

DRAWN BY KDF	DATE 11/15/23
CHECKED BY MPG	SCALE 1" = 40'

PLOT PLAN
FOR
BEN STOUT
CONSTRUCTION
FAIRGROUND FARMS
LOT 7
ALDERMAN COURT
DUNN, N.C.
HARNETT COUNTY AVERASBORO TOWNSHIP