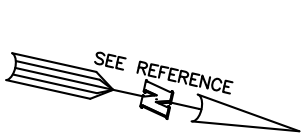
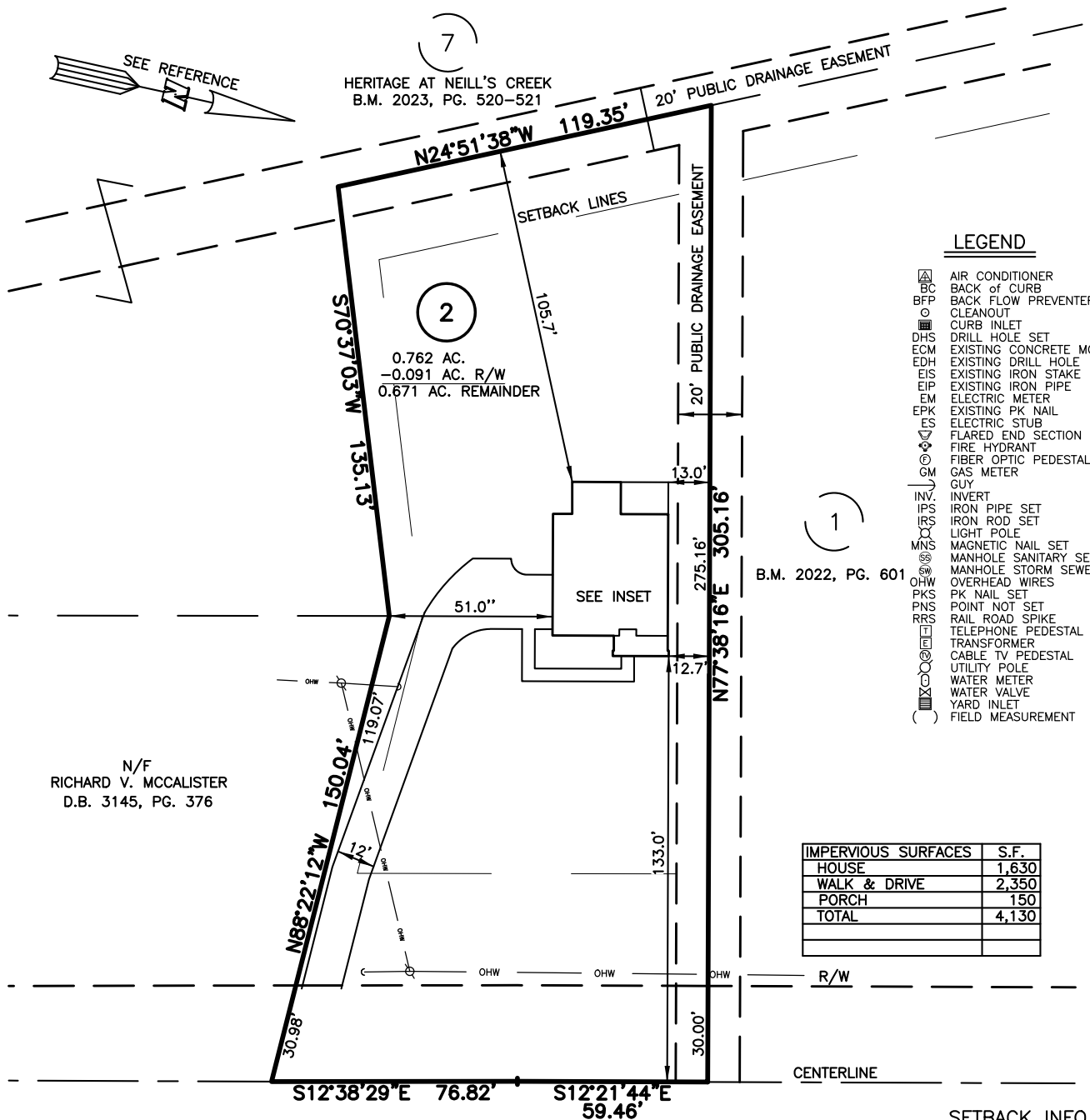


PLOT PLAN FOR  
**NEW HOME, INC.**  
 1701 NEILL'S CREEK ROAD  
 LOT 2B, HERITAGE AT NEILL'S CREEK SUBDIVISION (NOTE 3)  
 NEILL'S CREEK TOWNSHIP, HARNETT COUNTY, NORTH CAROLINA



(7)  
 HERITAGE AT NEILL'S CREEK  
 B.M. 2023, PG. 520-521



**LEGEND**

- ⊠ AIR CONDITIONER
- BC BACK of CURB
- BFP BACK FLOW PREVENTER
- CLEANOUT
- ⊠ CURB INLET
- DHS DRILL HOLE SET
- ECM EXISTING CONCRETE MONUMENT
- EDH EXISTING DRILL HOLE
- EIS EXISTING IRON STAKE
- EIP EXISTING IRON PIPE
- EM ELECTRIC METER
- EPK EXISTING PK NAIL
- ES ELECTRIC STUB
- FLARED END SECTION
- FIRE HYDRANT
- FIBER OPTIC PEDESTAL
- GM GAS METER
- GUY
- INV. INVERT
- IPS IRON PIPE SET
- IRS IRON ROD SET
- LIGHT POLE
- MNS MAGNETIC NAIL SET
- ⊠ MANHOLE SANITARY SEWER
- ⊠ MANHOLE STORM SEWER
- OHW OVERHEAD WIRES
- PKS PK NAIL SET
- PNS POINT NOT SET
- RRS RAIL ROAD SPIKE
- ⊠ TELEPHONE PEDESTAL
- ⊠ TRANSFORMER
- ⊠ CABLE TV PEDESTAL
- UTILITY POLE
- WATER METER
- WATER VALVE
- ⊠ YARD INLET
- ( ) FIELD MEASUREMENT

(1)  
 B.M. 2022, PG. 601

N/F  
 RICHARD V. MCCALISTER  
 D.B. 3145, PG. 376

IMPERVIOUS SURFACES	S.F.
HOUSE	1,630
WALK & DRIVE	2,350
PORCH	150
<b>TOTAL</b>	<b>4,130</b>

**SETBACK INFO**

- FRONT: 35'
- REAR: 25'
- SIDES: 10'
- CORNER SIDE: 20'

**REFERENCES:**

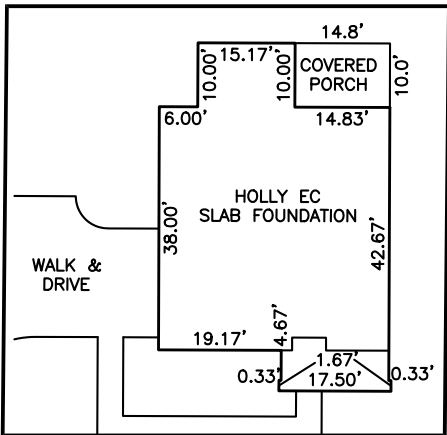
B.M. 2022, PG. 601



SCALE: 1" = 50'

**NOTES**

1. THIS SURVEY SUBJECT TO ANY FACTS THAT MAY BE DISCLOSED BY A FULL AND ACCURATE TITLE SEARCH.
2. THIS MAP MAY NOT BE A CERTIFIED SURVEY AND HAS NOT BEEN REVIEWED BY A LOCAL GOVERNMENT AGENCY FOR COMPLIANCE WITH ANY APPLICABLE LAND DEVELOPMENT REGULATIONS AND HAS NOT BEEN REVIEWED FOR COMPLIANCE WITH RECORDING REQUIREMENTS FOR PLATS.
3. RECORDED AS LOT 1 OF "LOT RECOMBINATION FOR HLM, LEGACY PARTNERSHIP, LLC." B.M. 2022, PG. 601.



INSET  
 SCALE: 1" = 30'

PLOT PLAN  
 PRELIMINARY PLAT- NOT FOR RECORDATION,  
 CONVEYANCE OR SALES

REV CODE: 1.FLIP, 2.PLAN, 3.ROTATE, 4.MOVE, 5.SS  
 6.SEVERAL OF ABOVE, 7.LAND FEATURE, 8. OTHER

DATE: NOV. 2, 2023

F.B. \_\_\_\_\_

RWK, PA

**ENGINEERING ~ SURVEYING**

CORPORATE LICENSE: C-1771  
 101 W. MAIN ST., SUITE 202  
 GARNER, NC 27529  
 PHONE (919) 779-4854  
 FAX (919) 779-4056