



COMMENTS: \_\_\_\_\_

LANDSCAPE POSITIONS	GROUP	TEXTURES	.1955 LTAR	CONSISTENCE MOIST	WET
R-RIDGE	I	S-SAND	1.2 - 0.8	VFR-VERY FRIABLE	NS-NON-STICKY
S-SHOULDER SLOPE		LS-LOAMY SAND		FR-FRIABLE	SS-SLIGHTLY STICKY
L-LINEAR SLOPE				FI-FIRM	S-STICKY
FS-FOOT SLOPE	II	SL-SANDY LOAM	0.8 - 0.6	VFI-VERY FIRM	VS-VERY STICKY
N-NOSE SLOPE		L-LOAM		EFI-EXTREMELY FIRM	NP-NON-PLASTIC
H-HEAD SLOPE					SP-SLIGHTLY STICKY
CC-CONCLAVE SLOPE	III	SI-SILT	0.6 - 0.3		P-PLASTIC
CV-CONVEX SLOPE		SIL-SILT LOAM			VP-VERY PLASTIC
T-TERRACE		CL-CLAY LOAM			
FP-FLOOD PLAN		SCL-SANDY CLAY LOAM			
	IV	SIC-SILTY CLAY	0.4 - 0.1		
		C-CLAY			
		SC-SANDY CLAY			

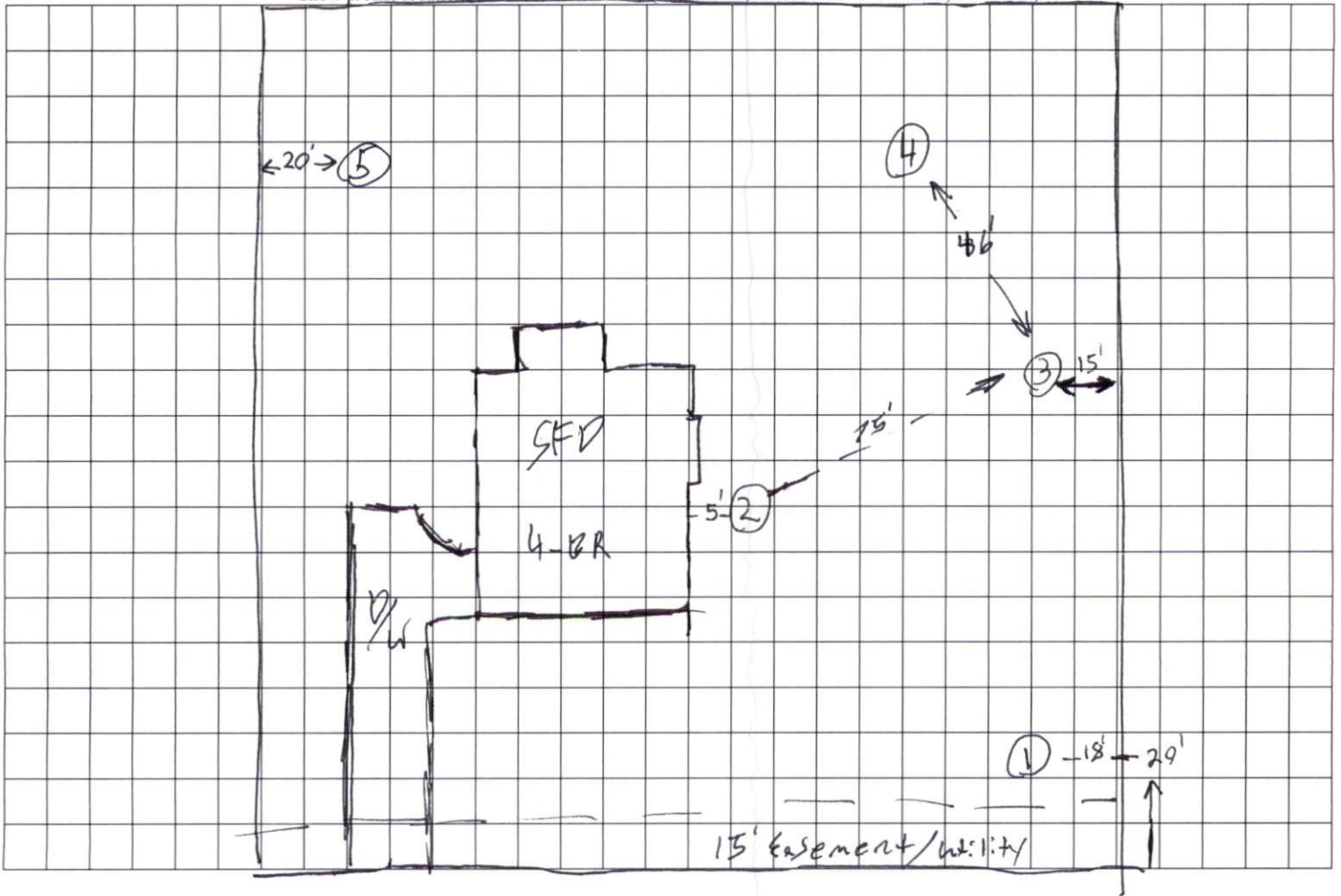
STRUCTURE

- SG-SINGLE GRAIN
- M- MASSIVE
- CR-CRUMB
- GR-GRANULAR
- SBK-SUBANGULAR BLOCKY
- ABK-ANGULAR BLOCKY
- PL-PLATY
- PR-PRISMATIC

MINERALOGY

- SLIGHTLY EXPANSIVE
- EXPANSIVE

Show profile locations and other site features (dimensions, references or benchmark, and North)



3, 1, 0-18 SCL<sup>9"</sup> Fc, NS, NP, SE  
18-48 SCL<sup>SBK</sup> Fc, SS, NP, SE .45

2, 0-22 SCL<sup>9"</sup> Fc, NS, NP, SE  
22-45 SCL<sup>SBK</sup> Fc, SS, NP, SE .45  
45-48 SCL<sup>Weak SBK</sup> Fc, SS, NP, SE

4 0-20 SCL<sup>9"</sup> Fc, NS, NP, SE  
20-48 SCL<sup>SBK</sup> Fc, SS, NP, SE

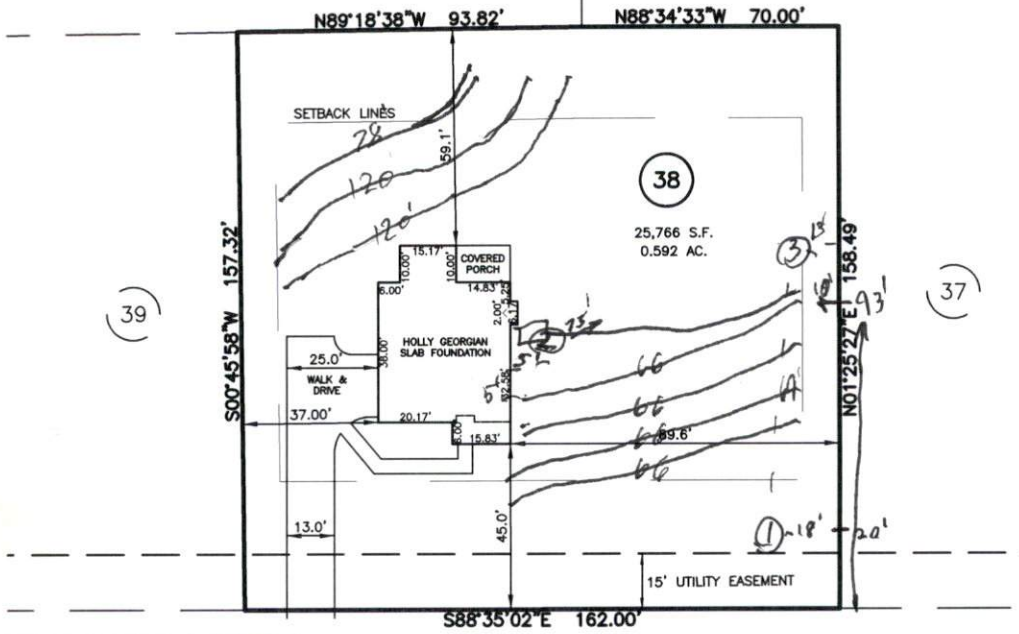
5 0-25 SCL<sup>9"</sup> Fc, NS, NP, SE  
25-45 SCL<sup>9"</sup> Fc, SS, NP, SE  
45-48 SCL/pm 2% mottle out 45"

PLOT PLAN FOR  
**NEW HOME, INC., LLC**  
 111 SALEM VILLAGE DRIVE  
 LOT 38, WOODBRIDGE SOUTH  
 BUCKHORN TOWNSHIP, HARNETT COUNTY, NORTH CAROLINA



N/F  
 CRISSY & JOEL RICKER  
 D.B. 3244 PG. 888  
 P.C. # F SLIDE 540C

equal + Gravity  
 initial 4- 66' Lines  
 Repair 3- 120', 120', 79' Lines



IMPERVIOUS SURFACES	
HOUSE	1,630 S.F.
WALK & DRIVE	1,390 S.F.
PORCH	150 S.F.
TOTAL	3,170 S.F.
MAX. IMPERVIOUS	4,000 S.F.

SALEM VILLAGE DRIVE  
 50' PUBLIC R/W & UTILITY EASEMENT

**LEGEND**

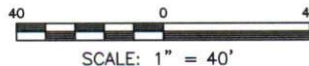
- |   |  |
|---|--|
| <ul style="list-style-type: none"> <li>AC AIR CONDITIONER</li> <li>BC BACK OF CURB</li> <li>BFP BACK FLOW PREVENTER</li> <li>○ CLEANOUT</li> <li>CI CURB INLET</li> <li>DHS DRILL HOLE SET</li> <li>ECM EXISTING CONCRETE MONUMENT</li> <li>EDH EXISTING DRILL HOLE</li> <li>EIS EXISTING IRON STAKE</li> <li>EIP EXISTING IRON PIPE</li> <li>EM ELECTRIC METER</li> <li>ES ELECTRIC STUB</li> <li>EPK EXISTING PK NAIL</li> <li>FLA FLARED END SECTION</li> <li>FHY FIRE HYDRANT</li> <li>FOP FIBER OPTIC PEDESTAL</li> <li>GM GAS METER</li> <li>→ GUY</li> </ul> | <ul style="list-style-type: none"> <li>INV. INVERT</li> <li>IPS IRON PIPE SET</li> <li>IRS IRON ROD SET</li> <li>LP LIGHT POLE</li> <li>MNS MAGNETIC NAIL SET</li> <li>MS MANHOLE SANITARY SEWER</li> <li>MS MANHOLE STORM SEWER</li> <li>OWH OVERHEAD WIRES</li> <li>PKS PK NAIL SET</li> <li>PNS POINT NOT SET</li> <li>RRS RAIL ROAD SPIKE</li> <li>TP TELEPHONE PEDESTAL</li> <li>TR TRANSFORMER</li> <li>CTV CABLE TV PEDESTAL</li> <li>UM WATER METER</li> <li>UV WATER VALVE</li> <li>YI YARD INLET</li> <li>( ) FIELD MEASUREMENT</li> </ul> |
|---|--|

**SETBACK INFO**

- FRONT: 35'
- REAR: 25'
- SIDES: 10'
- CORNER SIDE: 20'

**REFERENCES:**

P.B. 2023, PGS 92-94



**NOTES**

1. THIS SURVEY SUBJECT TO ANY FACTS THAT MAY BE DISCLOSED BY A FULL AND ACCURATE TITLE SEARCH.
2. THIS MAP MAY NOT BE A CERTIFIED SURVEY AND HAS NOT BEEN REVIEWED BY A LOCAL GOVERNMENT AGENCY FOR COMPLIANCE WITH ANY APPLICABLE LAND DEVELOPMENT REGULATIONS AND HAS NOT BEEN REVIEWED FOR COMPLIANCE WITH RECORDING REQUIREMENTS FOR PLATS.

PLOT PLAN  
 PRELIMINARY PLAT- NOT FOR RECORDATION,  
 CONVEYANCE OR SALES

REV CODE: 1.FLIP, 2.PLAN, 3.ROTATE, 4.MOVE, 5.SS  
 6.SEVERAL OF ABOVE, 7.LAND FEATURE, 8. OTHER

REV1: NOV. 18, 2023(2)  
 DATE: NOV. 15, 2023

F.B. \_\_\_\_\_

**RWK, PA**  
 ENGINEERING ~ SURVEYING  
 CORPORATE LICENSE: C-1771  
 101 W. MAIN ST., SUITE 202  
 GARNER, NC 27529  
 PHONE (919) 779-4854  
 FAX (919) 779-4056