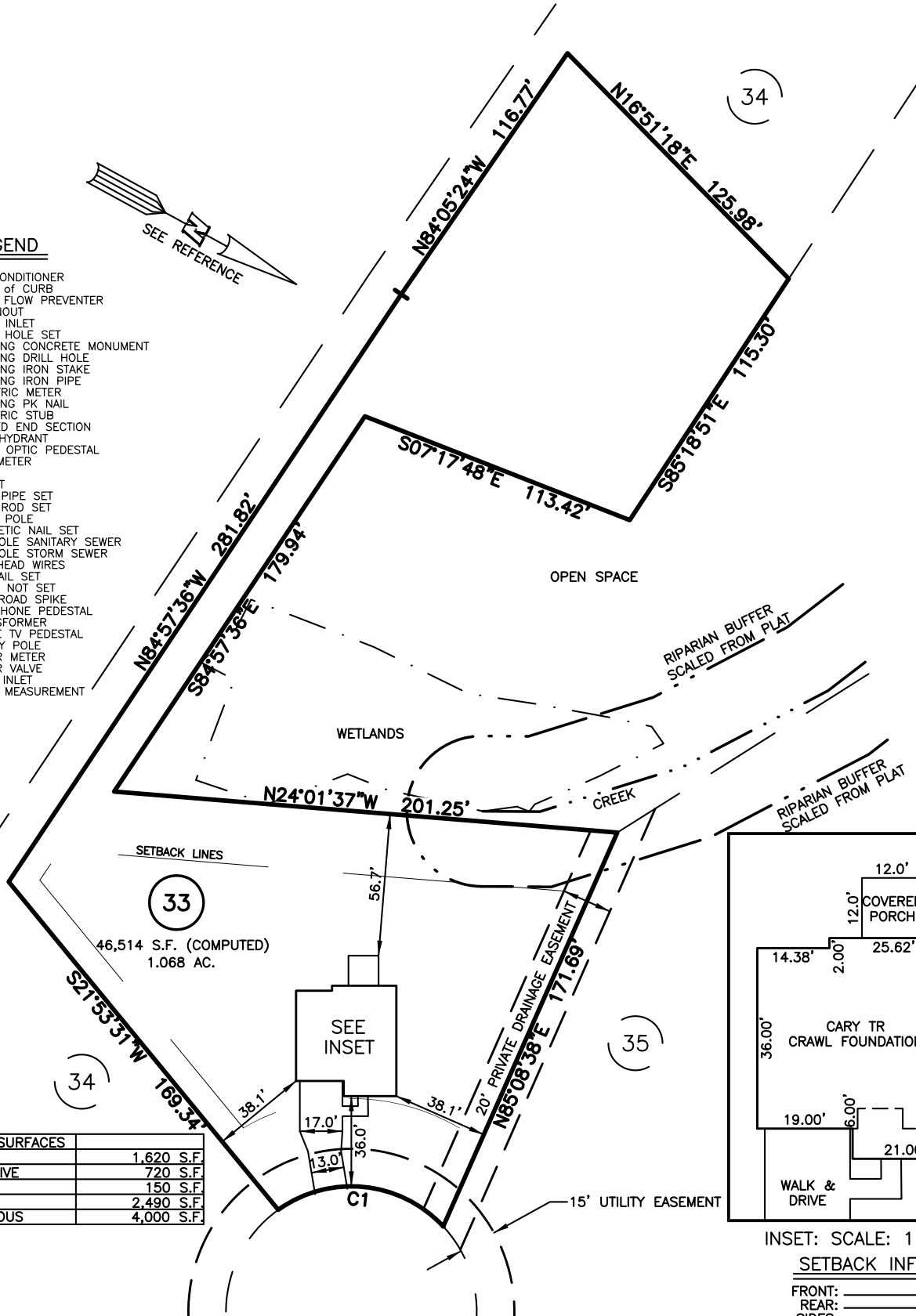
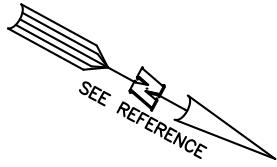


PLOT PLAN FOR
NEW HOME INC., LLC
 88 WILLOW CREEK PLACE
 LOT 33, WOODBRIDGE SOUTH
 BUCKHORN TOWNSHIP, HARNETT COUNTY, NORTH CAROLINA

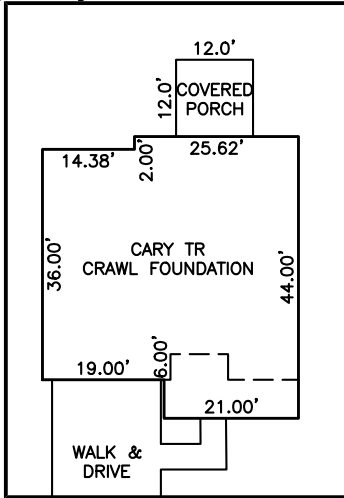
LEGEND

- AIR CONDITIONER
- BC BACK OF CURB
- BFP BACK FLOW PREVENTER
- CLEANOUT
- CURB INLET
- DHS DRILL HOLE SET
- ECM EXISTING CONCRETE MONUMENT
- EDH EXISTING DRILL HOLE
- EIS EXISTING IRON STAKE
- EIP EXISTING IRON PIPE
- EM ELECTRIC METER
- EPK EXISTING PK NAIL
- ES ELECTRIC STUB
- FLARED END SECTION
- FIRE HYDRANT
- FIBER OPTIC PEDESTAL
- GM GAS METER
- GUY
- INV. INVERT
- IPS IRON PIPE SET
- IRS IRON ROD SET
- LIGHT POLE
- MNS MAGNETIC NAIL SET
- MANHOLE SANITARY SEWER
- MANHOLE STORM SEWER
- OHV OVERHEAD WIRES
- PKS PK NAIL SET
- PNS POINT NOT SET
- RRS RAIL ROAD SPIKE
- TI TELEPHONE PEDESTAL
- TRANSFORMER
- CABLE TV PEDESTAL
- UTILITY POLE
- WATER METER
- WATER VALVE
- YARD INLET
- () FIELD MEASUREMENT



33
 46,514 S.F. (COMPUTED)
 1.068 AC.

IMPERVIOUS SURFACES	
HOUSE	1,620 S.F.
WALK & DRIVE	720 S.F.
PORCH	150 S.F.
TOTAL	2,490 S.F.
MAX IMPERVIOUS	4,000 S.F.



INSET: SCALE: 1"=30'

SETBACK INFO

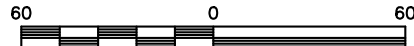
- FRONT: _____ 35'
- REAR: _____ 25'
- SIDES: _____ 10'
- CORNER SIDE: _____ 20'

REFERENCES:

P.B. 2023, PGS 92-94

WILLOW CREEK PLACE
 50' PUBLIC R/W & UTILITY EASEMENT

CURVE	RADIUS	ARC LENGTH	CHORD LENGTH	CHORD BEARING	DELTA ANGLE
C1	50.00'	72.20'	66.09'	N22°58'35" W	82°44'02"



SCALE: 1" = 60'

NOTES

1. THIS SURVEY SUBJECT TO ANY FACTS THAT MAY BE DISCLOSED BY A FULL AND ACCURATE TITLE SEARCH.
2. THIS MAP MAY NOT BE A CERTIFIED SURVEY AND HAS NOT BEEN REVIEWED BY A LOCAL GOVERNMENT AGENCY FOR COMPLIANCE WITH ANY APPLICABLE LAND DEVELOPMENT REGULATIONS AND HAS NOT BEEN REVIEWED FOR COMPLIANCE WITH RECORDING REQUIREMENTS FOR PLATS.

PLOT PLAN
 PRELIMINARY PLAT- NOT FOR RECORDATION,
 CONVEYANCE OR SALES

DATE: NOV. 15, 2023

REV CODE: 1.FLIP, 2.PLAN, 3.ROTATE, 4.MOVE, 5.SS
 6.SEVERAL OF ABOVE, 7.LAND FEATURE, 8. OTHER

Q:\FieldLoc\

RWK, PA

ENGINEERING ~ SURVEYING

CORPORATE LICENSE: C-1771
 101 W. MAIN ST., SUITE 202
 GARNER, NC 27529
 PHONE (919) 779-4854
 FAX (919) 779-4056