

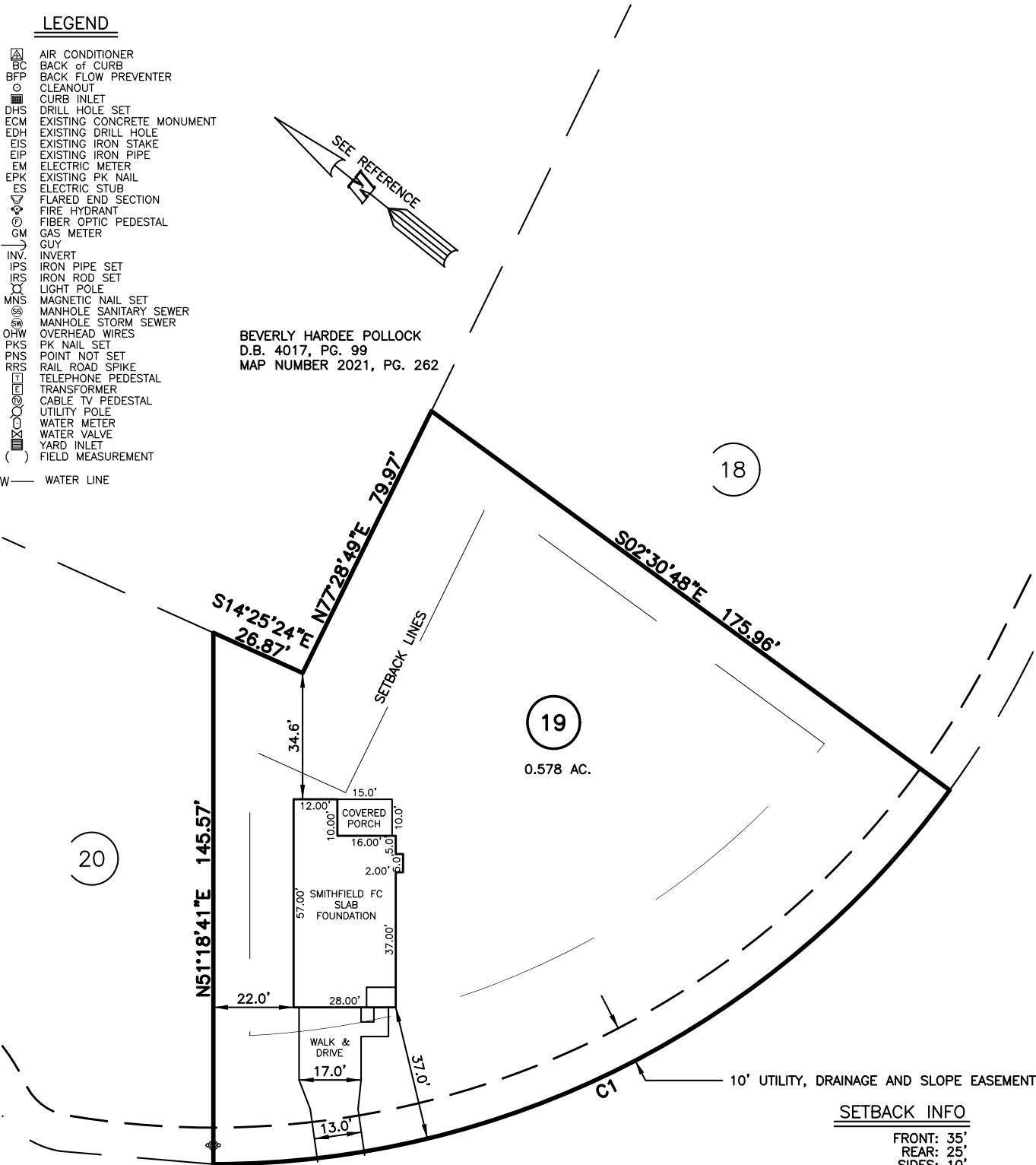
PLOT PLAN FOR
NEW HOME, INC.
 WHISTLING WAY
 LOT 19, HERITAGE AT NEILL'S CREEK SUBDIVISION
 NEILL'S CREEK TOWNSHIP, HARNETT COUNTY, NORTH CAROLINA

LEGEND

- ⊠ AIR CONDITIONER
- BC BACK of CURB
- BFP BACK FLOW PREVENTER
- CLEANOUT
- ⊠ CURB INLET
- DHS DRILL HOLE SET
- ECM EXISTING CONCRETE MONUMENT
- EDH EXISTING DRILL HOLE
- EIS EXISTING IRON STAKE
- EIP EXISTING IRON PIPE
- EM ELECTRIC METER
- EPK EXISTING PK NAIL
- ES ELECTRIC STUB
- ⊠ FLARED END SECTION
- ⊠ FIRE HYDRANT
- ⊠ FIBER OPTIC PEDESTAL
- ⊠ GAS METER
- ⊠ GUY
- INV. INVERT
- IPS IRON PIPE SET
- IRS IRON ROD SET
- LIGHT POLE
- MNS MAGNETIC NAIL SET
- ⊠ MANHOLE SANITARY SEWER
- ⊠ MANHOLE STORM SEWER
- OHW OVERHEAD WIRES
- PKS PK NAIL SET
- PNS POINT NOT SET
- RRS RAIL ROAD SPIKE
- ⊠ TELEPHONE PEDESTAL
- ⊠ TRANSFORMER
- ⊠ CABLE TV PEDESTAL
- ⊠ UTILITY POLE
- ⊠ WATER METER
- ⊠ WATER VALVE
- ⊠ YARD INLET
- () FIELD MEASUREMENT

— W — WATER LINE

BEVERLY HARDEE POLLOCK
 D.B. 4017, PG. 99
 MAP NUMBER 2021, PG. 262



SETBACK INFO

FRONT: 35'
 REAR: 25'
 SIDES: 10'
 CORNER SIDE: 20'

WHISTLING WAY
 50' PUBLIC R/W

IMPERVIOUS SURFACES	S.F.
HOUSE	1,450
WALK & DRIVE	670
PORCH	150
TOTAL	2,270
MAXIMUM IMPERVIOUS	7,050

CURVE	RADIUS	ARC LENGTH	CHORD LENGTH	CHORD BEARING	DELTA ANGLE
C1	250.00'	234.85'	226.31'	N65°36'04"W	53°49'29"

REFERENCES:

B.M. 2023, PG. 520-521



SCALE: 1" = 40'

NOTES

1. THIS SURVEY SUBJECT TO ANY FACTS THAT MAY BE DISCLOSED BY A FULL AND ACCURATE TITLE SEARCH.
2. THIS MAP MAY NOT BE A CERTIFIED SURVEY AND HAS NOT BEEN REVIEWED BY A LOCAL GOVERNMENT AGENCY FOR COMPLIANCE WITH ANY APPLICABLE LAND DEVELOPMENT REGULATIONS AND HAS NOT BEEN REVIEWED FOR COMPLIANCE WITH RECORDING REQUIREMENTS FOR PLATS.

PLOT PLAN
 PRELIMINARY PLAT- NOT FOR RECORDATION,
 CONVEYANCE OR SALES

REV CODE: 1.FLIP, 2.PLAN, 3.ROTATE, 4.MOVE, 5.SS
 6.SEVERAL OF ABOVE, 7.LAND FEATURE, 8. OTHER

DATE: OCT. 30, 2023

F.B. _____

RWK, PA
ENGINEERING ~ SURVEYING
 CORPORATE LICENSE: C-1771
 101 W. MAIN ST., SUITE 202
 GARNER, NC 27529
 PHONE (919) 779-4854
 FAX (919) 779-4056