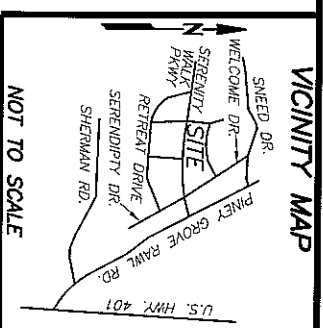


CURVE TABLE						
CURVE	DELTA	RADIUS	ARC	CHORD	TANGENT	CHORD BRG
C1	19°00'55"	526.00'	174.57'	173.77'	88.09'	N 15°13'05" W
LINE TABLE						
LINE	BEARING	DISTANCE				
L1	S 23°43'38" W	54.69'				
L2	S 22°10'56" E	143.16'				



NOT TO SCALE

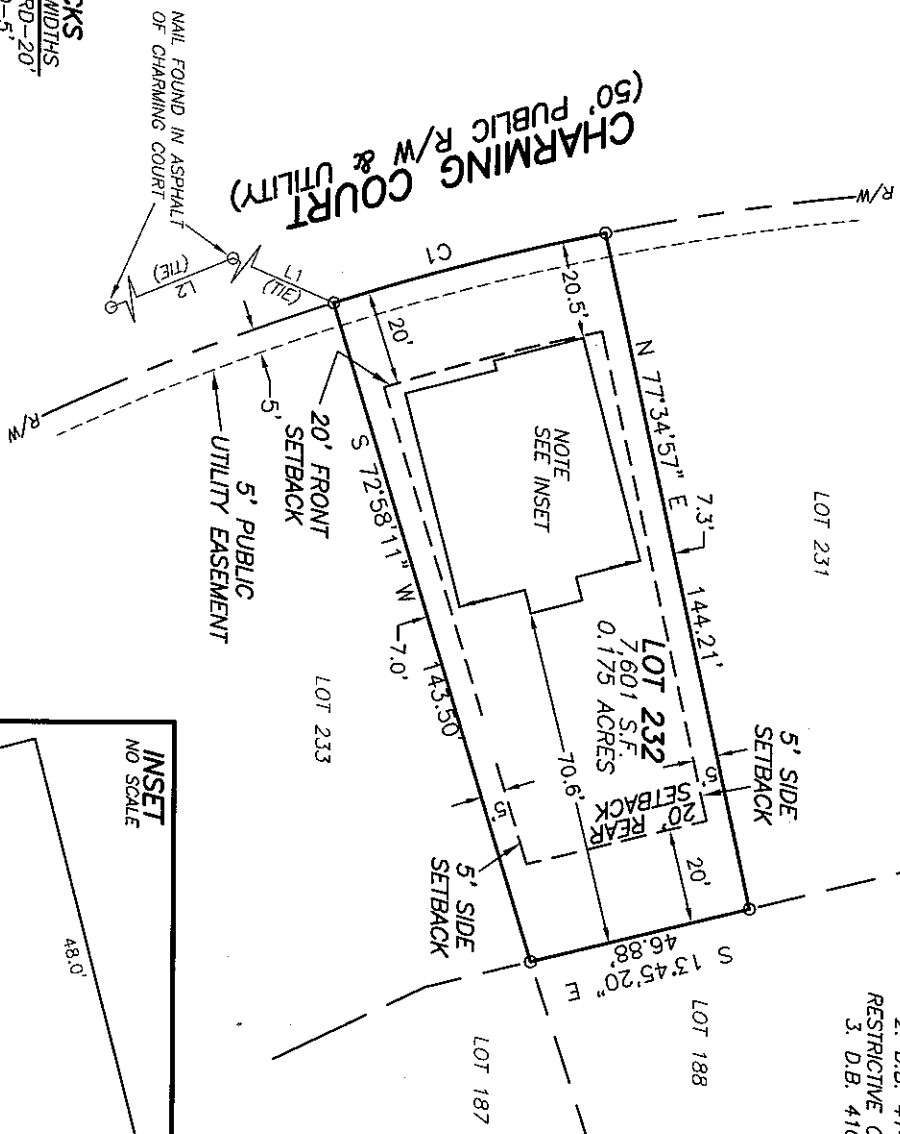
REFERENCES:

- D.B. 4209 PG. 2421
P.N. 0645-93-1325,000
PID: 08065502 0032 72

NOTICE OF DEVELOPMENT GUIDELINES:

- D.B. 4149, PG. 210
RESTRICTIVE COVENANTS:
- D.B. 4109, PG. 612

CHARMING COURT
(50' PUBLIC R/W & UTILITY)



N.C. GRID NORTH NAD83 (2011)
P.B. 2023, PG. 471-481

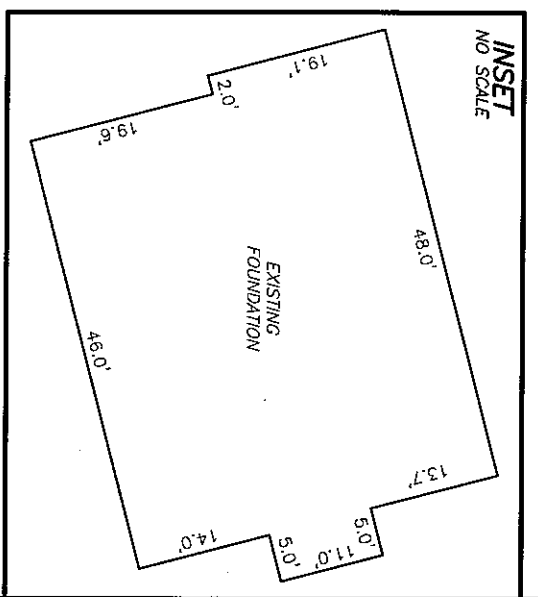
SETBACKS
>43' LOT WIDTHS
 FRONT YARD-20'
 SIDE YARD-5'
 REAR YARD-20'
 CORNER SIDE-12'

- NOTES:**
- ALL EASEMENTS, RIGHTS OF WAY AND BOUNDARY INFORMATION TAKEN FROM P.B. 2023, PG. 471-481 UNLESS OTHERWISE NOTED.
 - PROPERTY IS SUBJECT TO ALL EASEMENTS AND RESTRICTIONS OF RECORD. NO TITLE EXAMINATION HAS BEEN DONE BY ROBINSON & PLANTE, P.C.

NOTE:
 RATIO OF PRECISION IS 1:10,000±, ENCLOSURE WAS DISTRIBUTED BY THE COMPASS METHOD. THE DISTANCES ON THIS MAP ARE ADJUSTED HORIZONTAL GROUND UNLESS NOTED OTHERWISE. ALL AREAS ARE CALCULATED BY COORDINATE COMPUTATION.

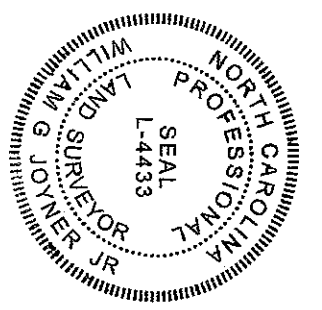
LOT 232 SERENITY SUBDIVISION
PHASE 2E
48 CHARMING COURT
HARNETT COUNTY
FUQUAY-VARINA, N.C. 27526

REFERENCE: PLAT BOOK 2023 PAGE 471-481.



FILE: STYLO1232ED

I CERTIFY THAT THIS MAP WAS DRAWN UNDER MY SUPERVISION FROM AN ACTUAL SURVEY MADE UNDER MY SUPERVISION DESCRIPTION RECORDED IN RECORDS AS SHOWN THAT THE BOUNDARIES NOT SURVEYED ARE INDICATED AS DRAWN FROM INFORMATION IN PRECISION IS 1:10,000; AND THAT THIS MAP MEET THE REQUIREMENTS OF THE STANDARDS OF PRACTICE FOR LAND SURVEYING IN NORTH CAROLINA (21 NCAC 56.16000).
 THIS 4th DAY OF JANUARY 2024.
William G. Joyner
 PROFESSIONAL LAND SURVEYOR L-4433



ROBINSON & PLANTE PC
 LAND SURVEYING
 C-2687
 970 TRINITY ROAD
 RALEIGH, N.C. 27607
 PHONE (919) 859-6030
 FAX (919) 859-6032

DATE: 1-3-24 SCALE: 1"=40'