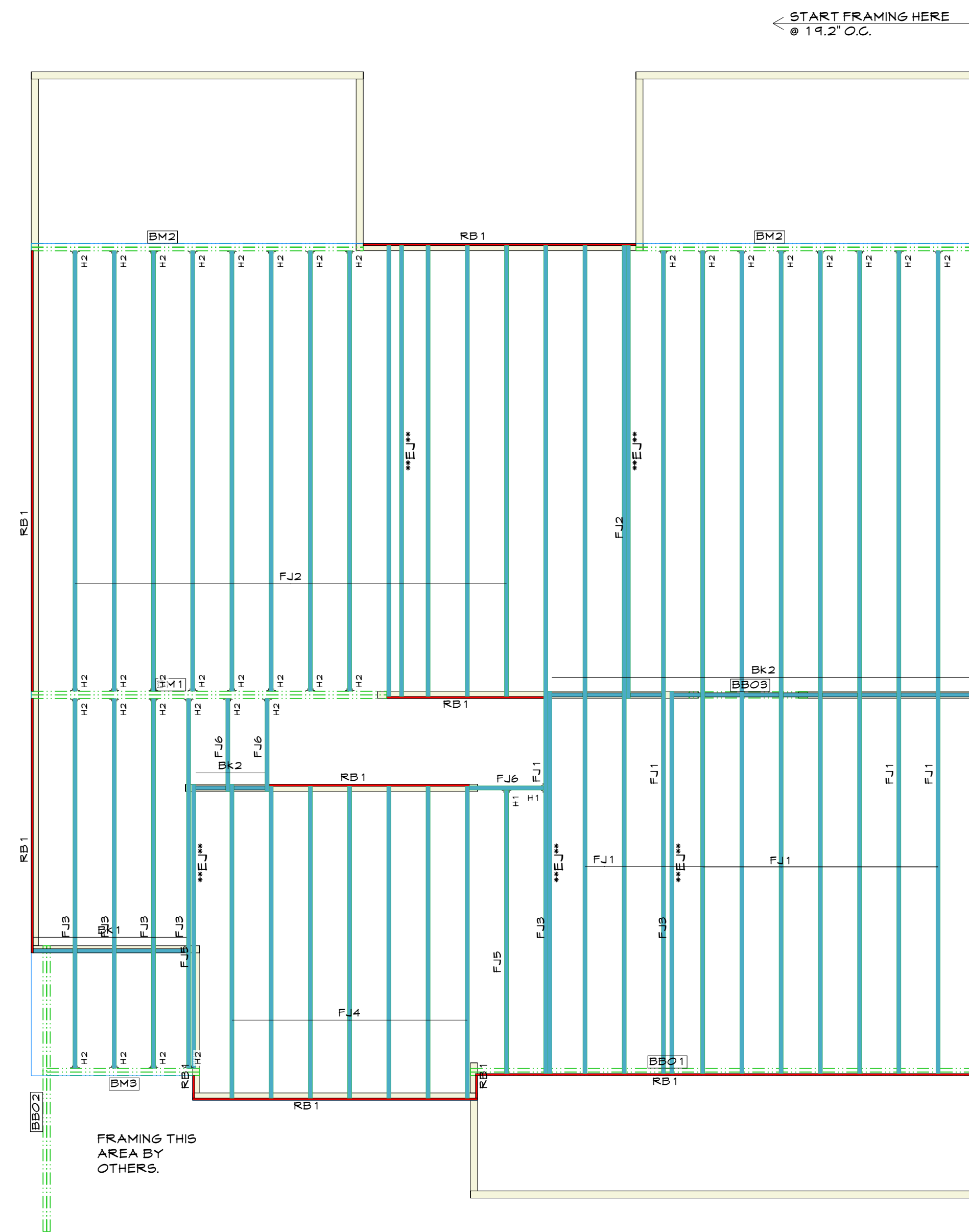


Second Floor:

Products				
PlotID	Net Qty	Product	Length	Piles
FJ1	11	14" BCI® 5000s-1.8	34' 0"	1
FJ2	14	14" BCI® 5000s-1.8	19' 0"	1
FJ3	6	14" BCI® 5000s-1.8	16' 0"	1
FJ4	7	14" BCI® 5000s-1.8	13' 0"	1
FJ5	2	14" BCI® 5000s-1.8	12' 0"	1
FJ6	3	14" BCI® 5000s-1.8	4' 0"	1
BM1	2	1-3/4" x 14" VERSA-LAM® 2.0 3 100 5P	16' 0"	2
BM2	4	1-3/4" x 14" VERSA-LAM® 2.0 3 100 5P	14' 0"	2
BM3	2	1-3/4" x 14" VERSA-LAM® 2.0 3 100 5P	8' 0"	2
BBO3	2	1 1/2" x 9 1/4" Generic Material	6' 0"	2
BBO2	2	1 3/4" x 9 1/4" Generic Material	12' 0"	2
BBO1	2	1 3/4" x 2' 0" Generic Material	22' 0"	2
RB1	11	1" x 14" BC RIM BOARD OSB	12' 0"	1
Bk1	1	14" BCI® 5000s-1.8	6' 0"	1
Bk2	1	14" BCI® 5000s-1.8	18' 0"	1

Connector Summary			
PlotID	Qty	Manuf	Product
H1	2	Simpson	IUS2.06/14
H2	34	Simpson	IUS2.06/14



EJ - INSTALL EXTRA JOIST IN LOCATION AS SHOWN

SOLID BLOCK ALL POSTS FROM ABOVE TO BEARING BELOW. REFER TO DETAILS F08 & F08A.

Random length joist with red ends are to be used as blocking panels.

Verify location of toilet, tub and/or shower location. Shift joist as necessary up to max 3" to avoid plumbing drops

SOLID BLOCK ALL POSTS FROM ABOVE TO BEARING BELOW. REFER TO DETAILS F08 & F08A.

General Notes:

- See Boise Cascade Installation Guide for installation/framing details.
- All measurements to be verified in the field.
- All I-Joist, LVL beams, and Rim Board must be field cut to length.
- Contractor to verify and approve the provided material list on this layout.
- The material provided is sold as a complete package, custom cut for this job; therefore, any cut lengths or pieces of cut lengths MAY NOT be returned for credit.
- Any material discrepancies must be reported before installation. Contact Talbert Building Supply at 336-599-1135.
- See original blueprints for additional structural notes.
- Ceramic tiles floors should be supported per APA standards. Additional joists may be required.
- Plumbing, HVAC, and Electrical trade to reference Boise Cascade Specifier or Installation Guide for hole cutting information.
- Boise Cascade/Talbert Building Supply is NOT the Engineer of Record. These plans are for the EoR to review and verify all bracing/load points are picked up properly. These plans are for gravity loads only and NOT lateral. Design and pricing hinges on EoR review/approval.
- Framer Note: Install all LVL with stamps/printing facing out for visibility.
- This layout was designed based on the Construction Documents and instruction provided to Talbert Building Supply by the contractor/home owner.

Builder:
Drees Homes

Job Name:
Lot 232 Serenity

Address:
Fuqua-Varina, NC

Date: 10/24/2023 By: Wallace

