

2x4/BRICK & BLOCK
NOT TO SCALE

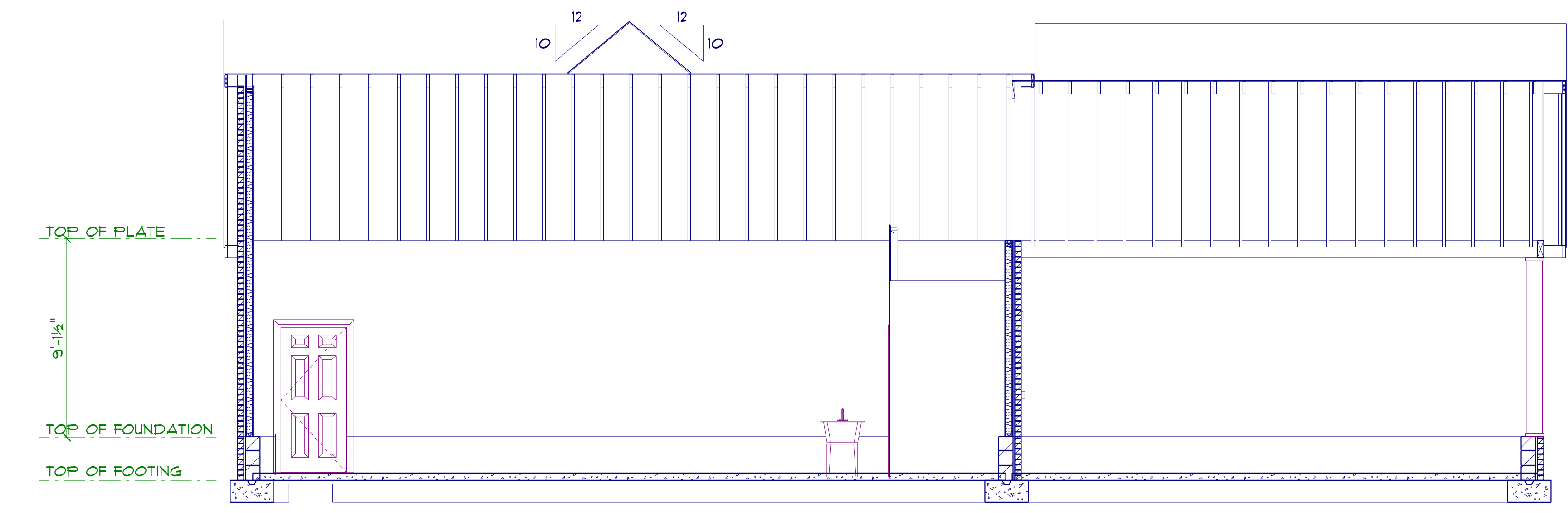
TYPICAL 2x4 BRICK EXTERIOR WALL:
FACE BRICK
1 GAUGE CORRUGATED GALVANIZED METAL BRICK TIES
1" AIR SPACE
7/16" PLYWOOD SHEATHING
2x4 STUDS @ 16" o.c.
R15 BATT INSULATION
6 mil POLY V.B.
1/2" DRYWALL
TAPED & SANDED

TYPICAL TRUSS ROOF:
SHINGLES
7/16" ROOFING PLYWOOD c/w
1" CLIPS
BLOCK & BRACE PER TRUSS MGR.
PRE-ENGINEERED TRUSSES @ 24" o.c.
2x4 TRUSS BRACING
R38 BLOWN INSULATION
1/2" CEILING BOARD
TAPED & SANDED

TYPICAL 2x4 WALL:
1/2" DRYWALL
TAPED & SANDED
2x4 STUDS @ 16" o.c.
1/2" DRYWALL
TAPED & SANDED



SECTION THROUGH
SCALE: 1" = 1/4"



SECTION THROUGH
SCALE: 1" = 1/4"