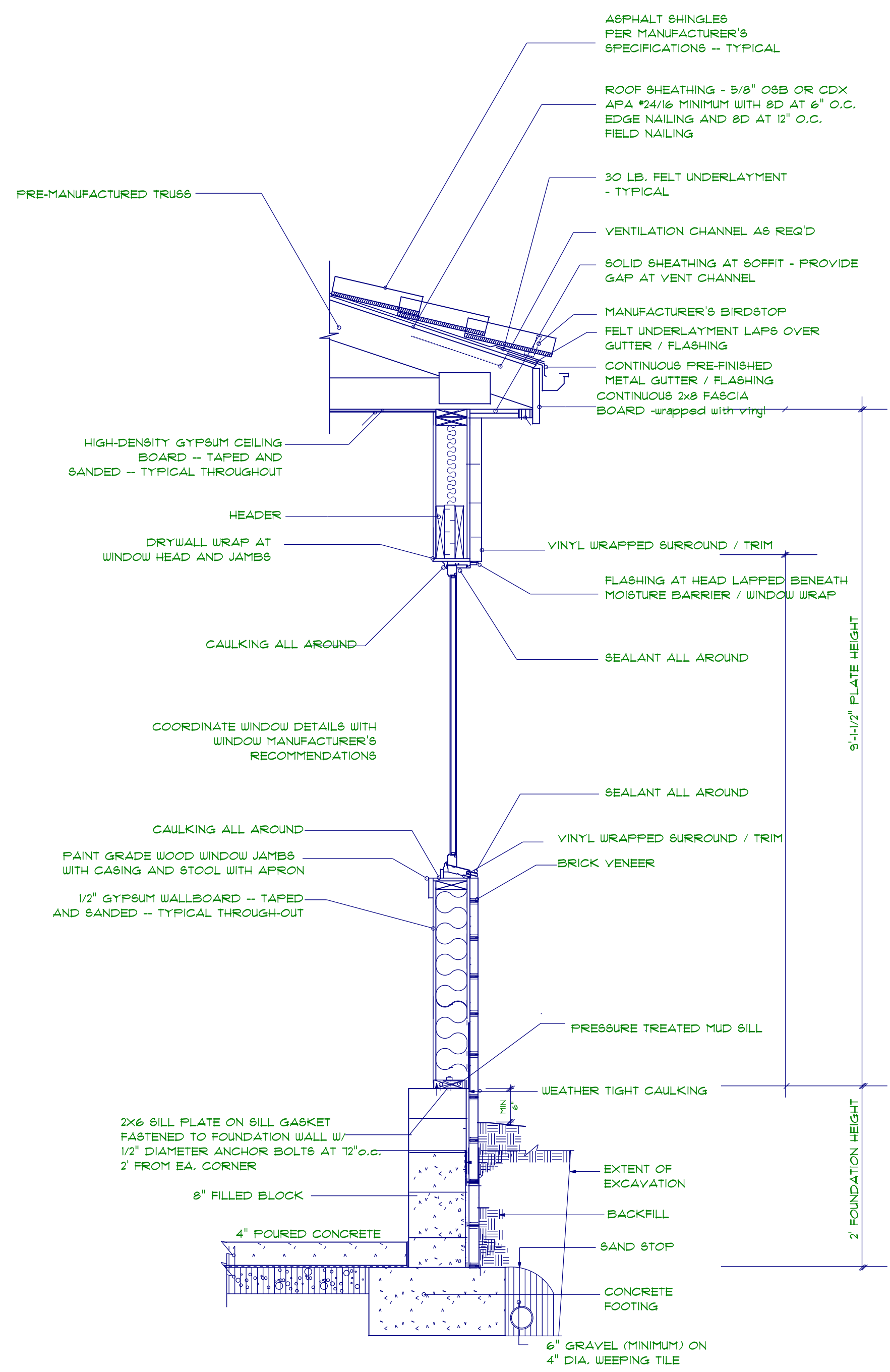


TYPICAL 2x4 BRICK EXTERIOR WALL:  
 FACE BRICK  
 1 GAUGE CORRUGATED GALVANIZED METAL BRICK TIES  
 1" AIR SPACE  
 1/16" PLYWOOD SHEATHING  
 2x4 STUDS @ 16" o.c.  
 R15 BATT INSULATION  
 6 mil POLY V.B.  
 1/2" DRYWALL  
 TAPED & SANDED

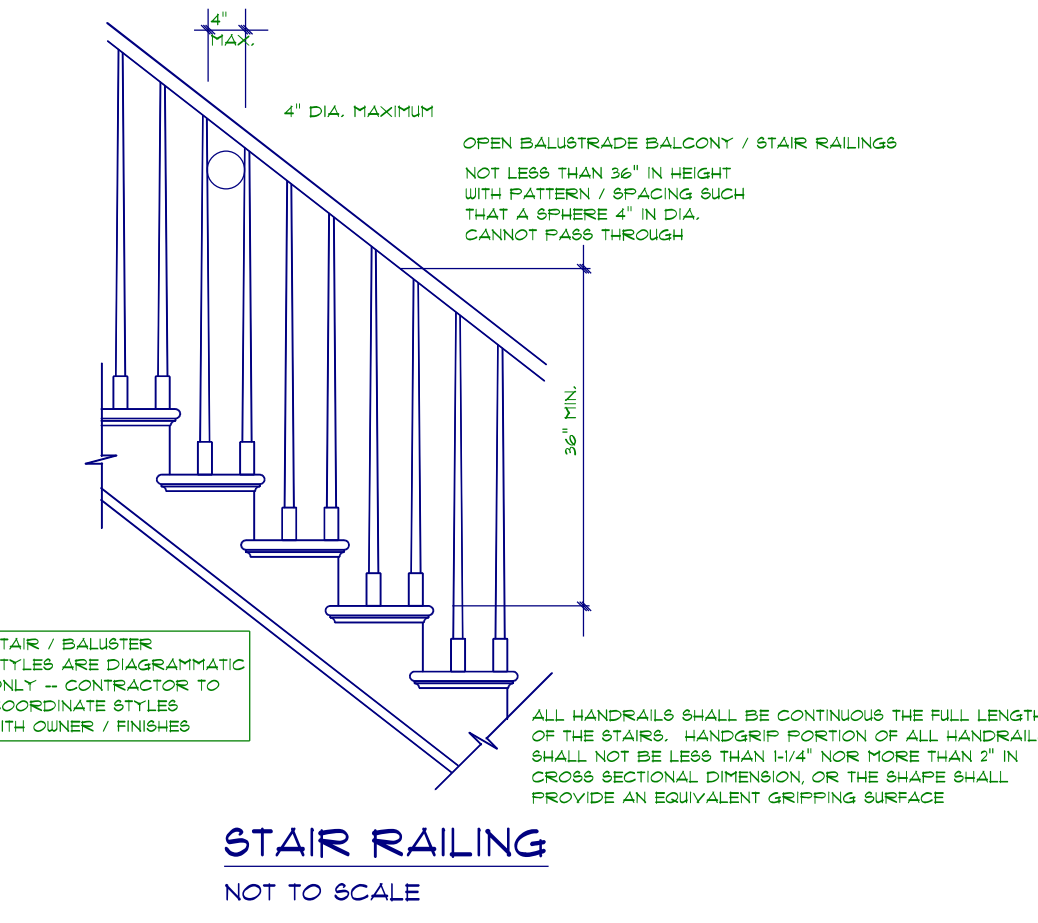
TYPICAL TRUSS ROOF:  
 SHINGLES  
 1/16" ROOFING PLYWOOD c/w  
 H CLIPS  
 BLOCK & BRACE PER TRUSS MGR.  
 PRE-ENGINEERED TRUSSES @ 24" o.c.  
 2x4 TRUSS BRACING  
 R30 BLOWN INSULATION  
 1/2" CEILING BOARD  
 TAPED & SANDED

TYPICAL 2x4 WALL:  
 1/2" DRYWALL  
 TAPED & SANDED  
 2x4 STUDS @ 16" o.c.  
 1/2" DRYWALL  
 TAPED & SANDED

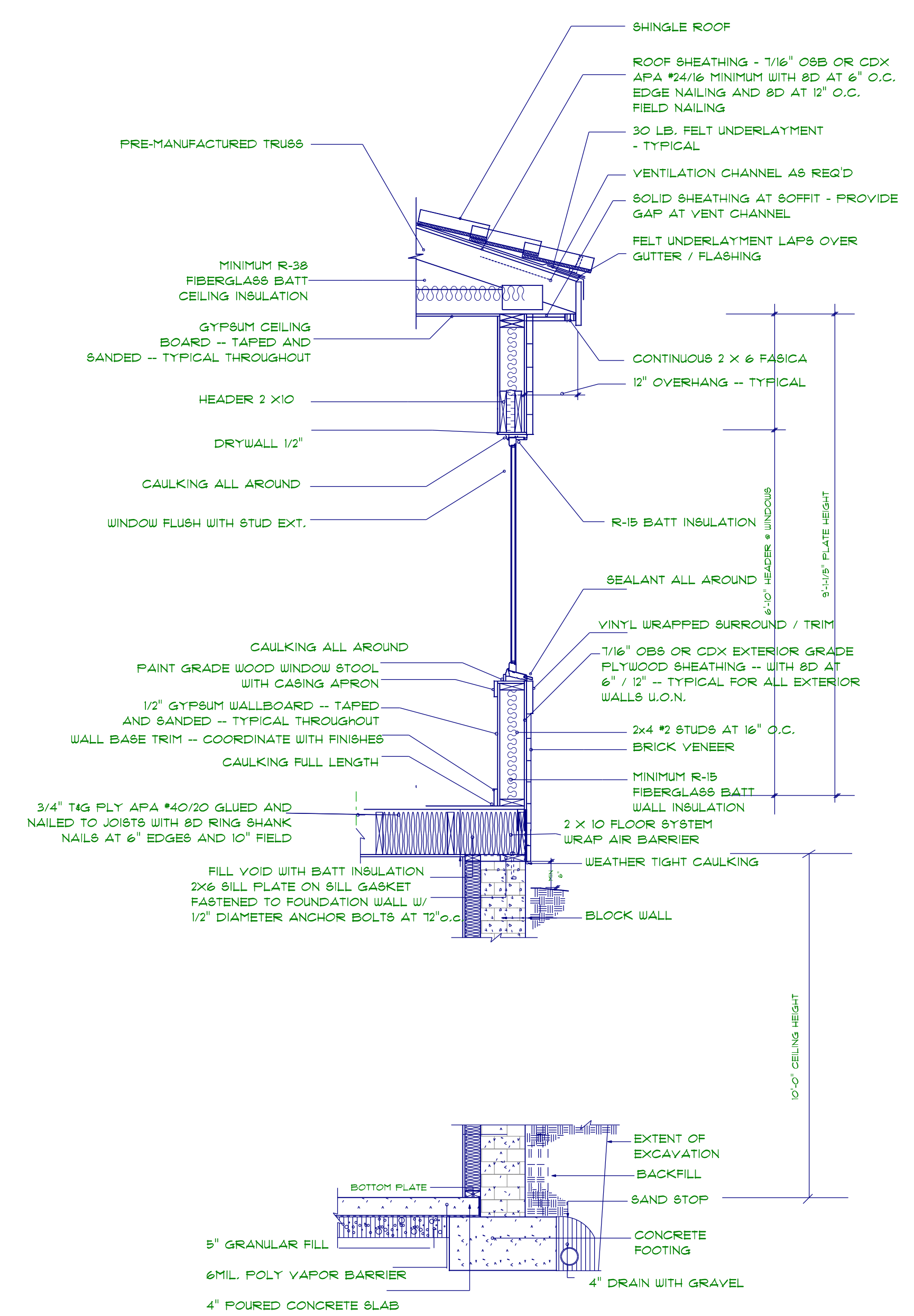
SECTION THROUGH  
 SCALE: 1" = 3/16"



2x4/BRICK & BLOCK  
 NOT TO SCALE



STAIR RAILING  
 NOT TO SCALE



2 X 4 BRICK VENEER W/CONCRETE BLOCK BASEMENT WALL  
 NOT TO SCALE