

Site Plan

Revised: Side Load Garage
9/28/2023
Revised: Move Dwelling Back
Remove Pool
10/30/2023
Revised: Center Dwelling
Front Load Garage
10/31/2023

DWB Development Inc
Deed Book 4200, Page 932
Map Number 2023-200

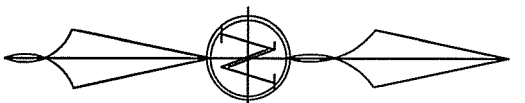
Reese Construction LLC
Deed Book 3912, Page 977
Map Number 2023-200

Maximum Allowable
ImperVIOUS Surface
7000 sq. ft.

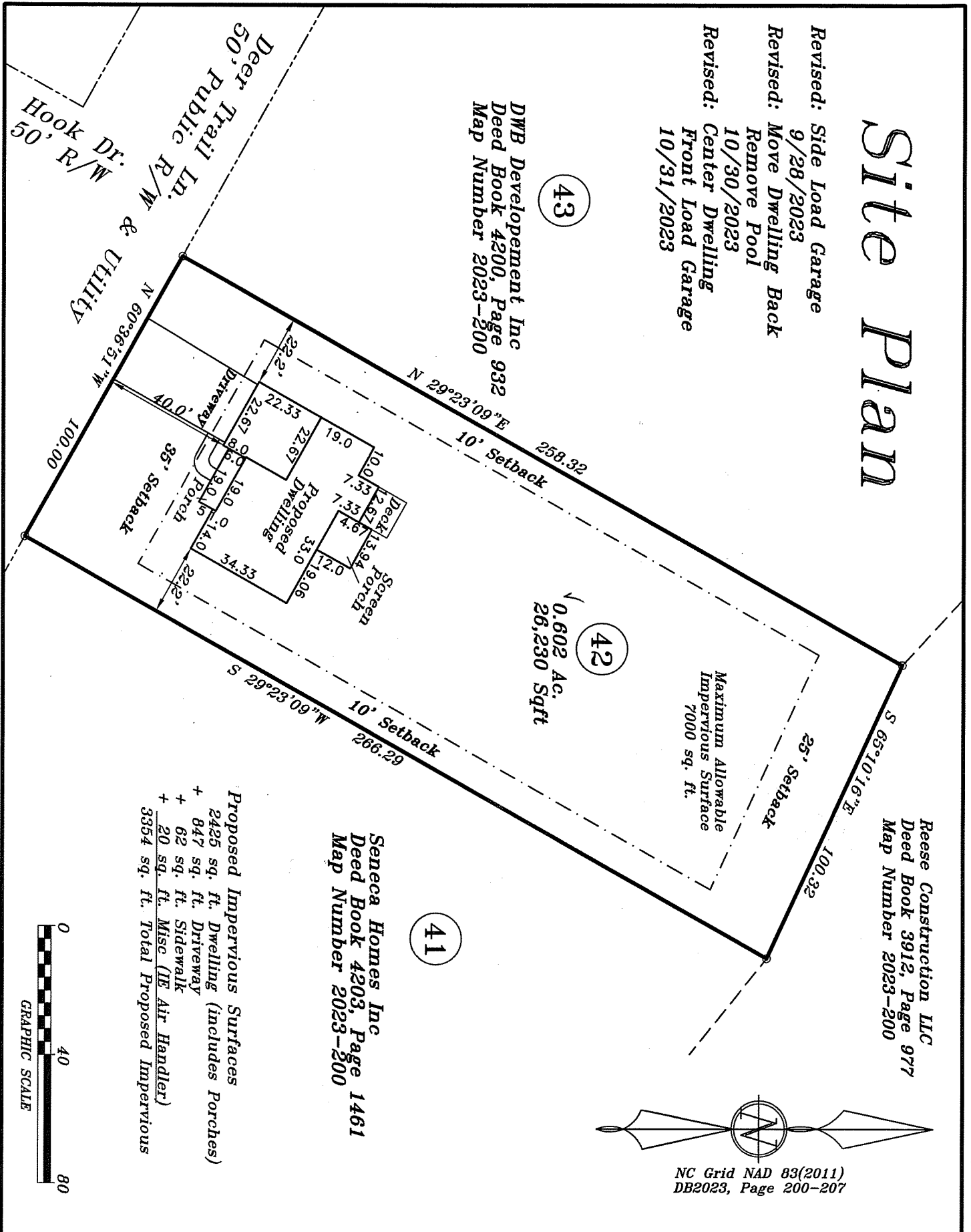
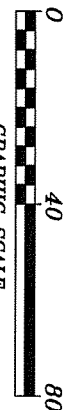
0.602 Ac.
26,230 Sqft

Seneca Homes Inc
Deed Book 4203, Page 1461
Map Number 2023-200

Proposed ImperVIOUS Surfaces
+ 2425 sq. ft. Dwelling (Includes Porches)
+ 847 sq. ft. Driveway
+ 62 sq. ft. Sidewalk
+ 20 sq. ft. Misc (IE Air Handler)
+ 3354 sq. ft. Total Proposed ImperVIOUS



NC Grid NAD 83(2011)
DB2023, Page 200-207



Seneca Homes, LLC
Mike Brown
4324 Willowdale Ct. Apex, NC 27539 919-669-4569
Hector's Creek Twp. Harnett County
Scale: 1" = 40' Date: 9/11/2023

Surveyed & Mapped for:
Seneca Homes, LLC
Mike Brown
4324 Willowdale Ct. Apex, NC 27539 919-669-4569
Hector's Creek Twp. Harnett County
Scale: 1" = 40' Date: 9/11/2023

Surveyed & Mapped By
STANCILO & ASSOCIATES
Professional Land Surveyor, P.A. C-0831
P.O. Box 730, Angier, N.C. 27501
919-639-2133 919-639-2602 (FAX)
stancilsurvey@gmail.com

VICINITY MAP

309 Deer Trail Ln. Fuquay Varina, NC
Lot #42 Cotton Farms Ph 1
Map Number 2023-200
PIN: 0643-37-5008

NOT FOR RECORDATION