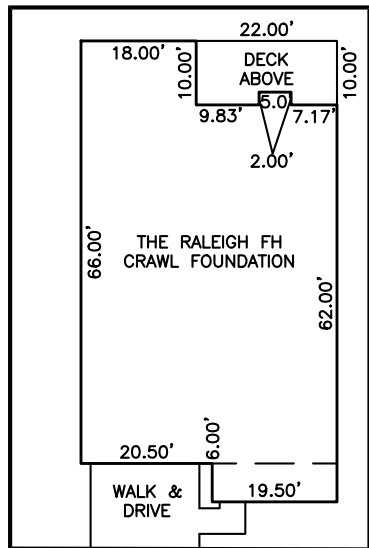


PLOT PLAN FOR
NEW HOME INC., LLC
 54 YATES MILL DRIVE
 LOT 2, WOODBRIDGE SOUTH
 BUCKHORN TOWNSHIP, HARNETT COUNTY, NORTH CAROLINA

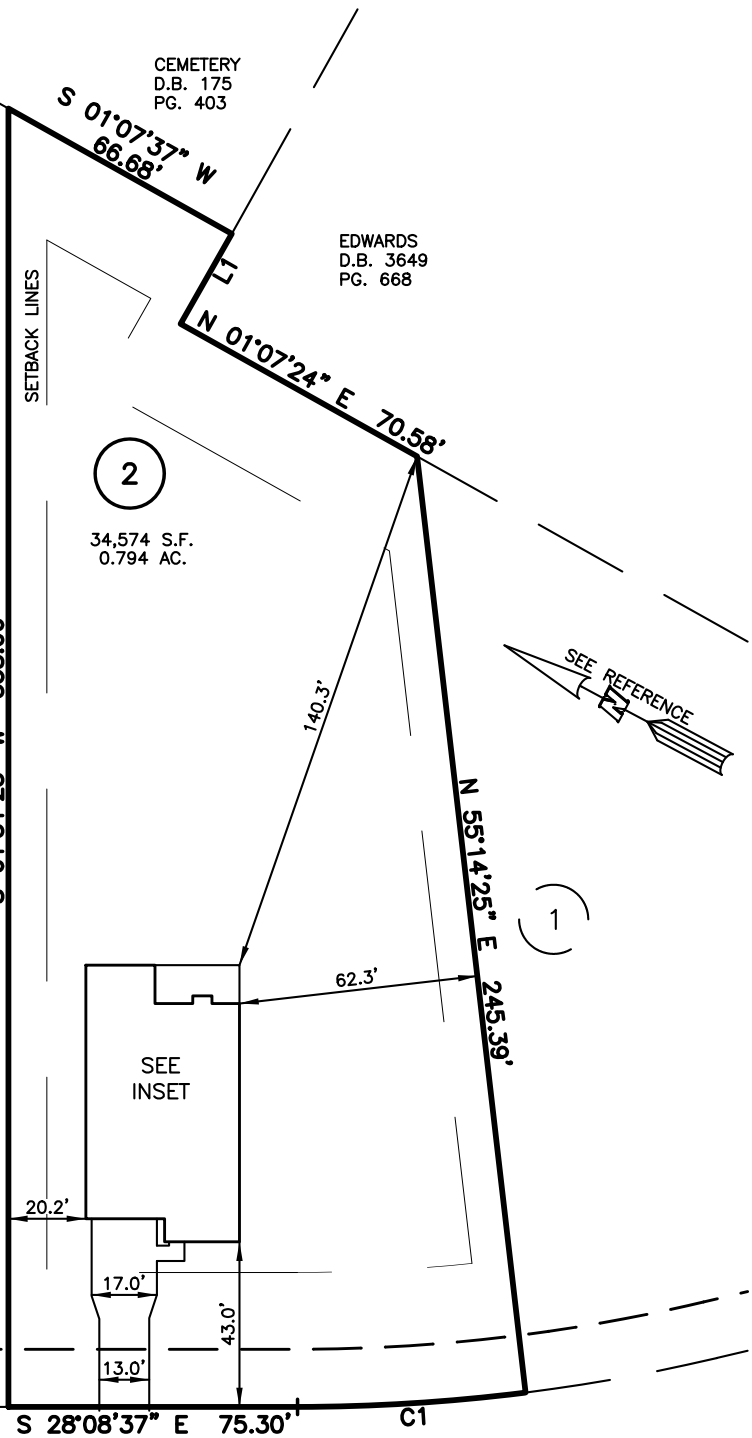
LEGEND

- △ AIR CONDITIONER
- BC BACK of CURB
- BFP BACK FLOW PREVENTER
- CLEANOUT
- CURB INLET
- DHS DRILL HOLE SET
- ECM EXISTING CONCRETE MONUMENT
- EDH EXISTING DRILL HOLE
- EIS EXISTING IRON STAKE
- EIP EXISTING IRON PIPE
- EM ELECTRIC METER
- EPK EXISTING PK NAIL
- ES ELECTRIC STUB
- FLARED END SECTION
- FIRE HYDRANT
- FIBER OPTIC PEDESTAL
- GM GAS METER
- GUY
- INV. INVERT
- IPS IRON PIPE SET
- IRS IRON ROD SET
- LIGHT POLE
- MNS MAGNETIC NAIL SET
- SS MANHOLE SANITARY SEWER
- SS MANHOLE STORM SEWER
- OHV OVERHEAD WIRES
- PKS PK NAIL SET
- PNS POINT NOT SET
- RRS RAIL ROAD SPIKE
- TELEPHONE PEDESTAL
- TRANSFORMER
- CABLE TV PEDESTAL
- UTILITY POLE
- WATER METER
- WATER VALVE
- YARD INLET
- () FIELD MEASUREMENT



INSET
 SCALE: 1" = 30'

15' UTILITY EASEMENT



2
 34,574 S.F.
 0.794 AC.

3

1

YATES MILL DRIVE
 50' PUBLIC R/W & UTILITY EASEMENT

LINE	BEARING	DISTANCE
L1	S 88°31'39" E	27.00'

NUM	RADIUS	ARC	DELTA	CHORD BRG	CHORD
C1	475.00'	59.53'	7°10'50"	S 31°44'02" E	59.49'

IMPERVIOUS SURFACES	
HOUSE	2,550 S.F.
WALK & DRIVE	760 S.F.
DECK (210 S.F.)	0 S.F.
TOTAL	3,310 S.F.
MAXIMUM IMPERVIOUS	4,000 S.F.

REFERENCES:
 P.B. 2023, PGS 92-94

SETBACK INFO
 FRONT: _____ 35'
 REAR: _____ 25'
 SIDES: _____ 10'
 CORNER SIDE: _____ 20'



SCALE: 1" = 50'

NOTES

1. THIS SURVEY SUBJECT TO ANY FACTS THAT MAY BE DISCLOSED BY A FULL AND ACCURATE TITLE SEARCH.
2. THIS MAP MAY NOT BE A CERTIFIED SURVEY AND HAS NOT BEEN REVIEWED BY A LOCAL GOVERNMENT AGENCY FOR COMPLIANCE WITH ANY APPLICABLE LAND DEVELOPMENT REGULATIONS AND HAS NOT BEEN REVIEWED FOR COMPLIANCE WITH RECORDING REQUIREMENTS FOR PLATS.

PLOT PLAN
 PRELIMINARY PLAT- NOT FOR RECORDATION,
 CONVEYANCE OR SALES

REV CODE: 1.FLIP, 2.PLAN, 3.ROTATE, 4.MOVE, 5.SS
 6.SEVERAL OF ABOVE, 7.LAND FEATURE, 8. OTHER

DATE: NOV. 1, 2023

F.B. _____

RWK, PA
 ENGINEERING ~ SURVEYING
 CORPORATE LICENSE: C-1771
 101 W. MAIN ST., SUITE 202
 GARNER, NC 27529
 PHONE (919) 779-4854
 FAX (919) 779-4056