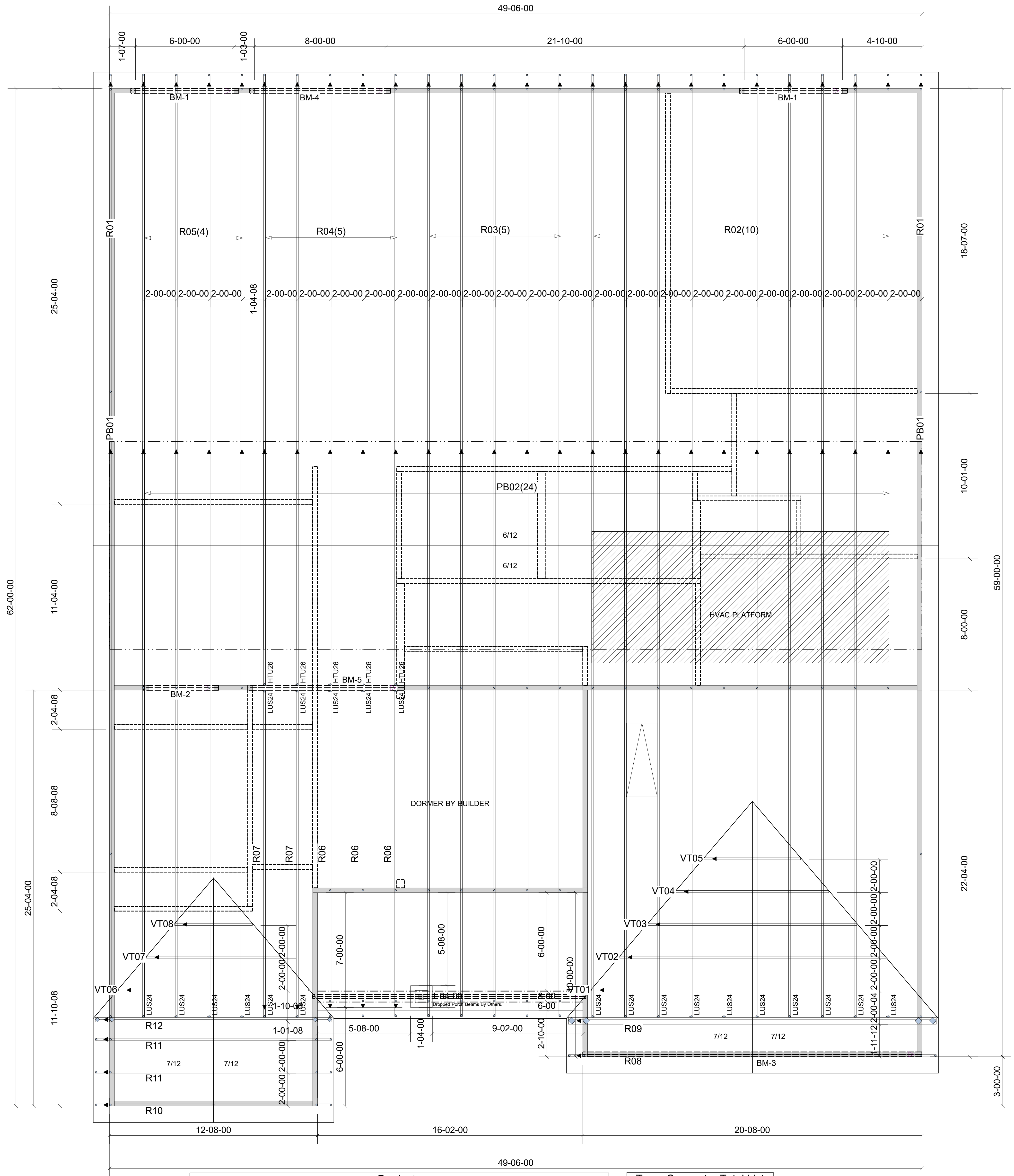


**WARNING!** Long span trusses, 60' or greater in length, require extreme care and experience for proper and safe handling and installation. For general handling and installation guidance, see the "Guide to Good Practice for Handling, Installing, Restraining & Bracing of Metal Plate Connected Wood Trusses" (BCSI), JOINTLY PRODUCED BY SBCA and TPI. For project specific guidance, consult with a registered design professional. ATLANTIC assumes no responsibility for the handling, installation or bracing of trusses.



Products				
PlotID	Length	Product	Plies	Net Qty
BM-1	8' 0"	1-3/4" x 9-1/2" VERSA-LAM® 2.0 3100 SP	2	4
BM-2	6' 0"	1-3/4" x 9-1/2" VERSA-LAM® 2.0 3100 SP	2	2
BM-3	22' 0"	1-3/4" x 11-7/8" VERSA-LAM® 2.0 3100 SP	2	2
BM-4	10' 0"	1-3/4" x 11-7/8" VERSA-LAM® 2.0 3100 SP	2	2
BM-5	10' 0"	1-3/4" x 14" VERSA-LAM® 2.0 3100 SP	2	2

Truss Connector Total List		
Manuf	Product	Qty
Simpson	HTU26	5
Simpson	LUS24	21

▲ = LEFT END OF TRUSS

**NOT FOR CONSTRUCTION**



Moncks Corner/Easley, SC (800) 475-3999  
Sparta, NC (336) 372-2226

REVISIONS:

Client:	MATTAMY HOMES-RALEIGH		
Job:	LOT 17 PROVIDENCE CREEK		
Plan Information:	CLEARWATER-FC		
NOT TO SCALE	Date:	10/19/23	
Drawn By:	Job #:	Sales Rep: KYLE GIBSON	
MBB	23-7719-R01	Phone:	

ROOF