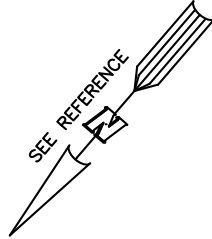
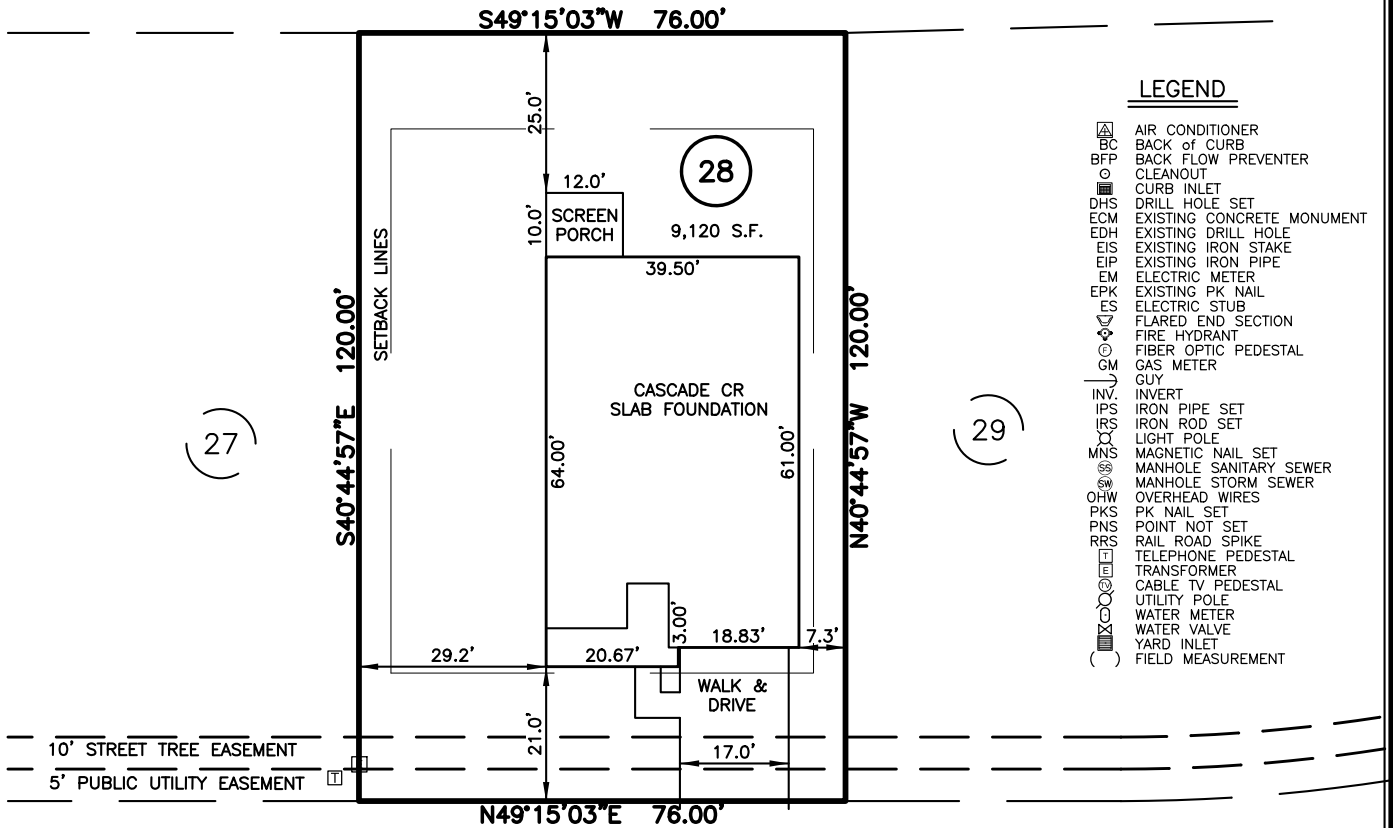


PLOT PLAN FOR  
**MATTAMY HOMES**  
 29 COTTONSEED LANE  
 LOT 28, PROVIDENCE CREEK PHASE 1  
 HECTORS CREEK AND BLACK RIVER TOWNSHIP, HARNETT COUNTY, NORTH CAROLINA



OPEN SPACE #8



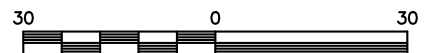
**LEGEND**

- AIR CONDITIONER
- BACK OF CURB
- BACK FLOW PREVENTER
- CLEANOUT
- CURB INLET
- DRILL HOLE SET
- EXISTING CONCRETE MONUMENT
- EXISTING DRILL HOLE
- EXISTING IRON STAKE
- EXISTING IRON PIPE
- ELECTRIC METER
- EXISTING PK NAIL
- ELECTRIC STUB
- FLARED END SECTION
- FIRE HYDRANT
- FIBER OPTIC PEDESTAL
- GAS METER
- GUY
- INVERT
- IRON PIPE SET
- IRON ROD SET
- LIGHT POLE
- MAGNETIC NAIL SET
- MANHOLE SANITARY SEWER
- MANHOLE STORM SEWER
- OVERHEAD WIRES
- PK NAIL SET
- POINT NOT SET
- RAIL ROAD SPIKE
- TELEPHONE PEDESTAL
- TRANSFORMER
- CABLE TV PEDESTAL
- UTILITY POLE
- WATER METER
- WATER VALVE
- YARD INLET
- FIELD MEASUREMENT

IMPERVIOUS SURFACES	
HOUSE	2,480 S.F.
WALK & DRIVE	460 S.F.
PORCH	120 S.F.
<b>TOTAL</b>	<b>3,060 S.F.</b>

SETBACK INFO	
FRONT:	20'
REAR:	15'
SIDES:	5'
CORNER SIDE:	15'

**REFERENCES:**  
 BM 2022 PGS 346-351



SCALE: 1" = 30'

**NOTES**

1. THIS SURVEY SUBJECT TO ANY FACTS THAT MAY BE DISCLOSED BY A FULL AND ACCURATE TITLE SEARCH.
2. THIS MAP MAY NOT BE A CERTIFIED SURVEY AND HAS NOT BEEN REVIEWED BY A LOCAL GOVERNMENT AGENCY FOR COMPLIANCE WITH ANY APPLICABLE LAND DEVELOPMENT REGULATIONS AND HAS NOT BEEN REVIEWED FOR COMPLIANCE WITH RECORDING REQUIREMENTS FOR PLATS.

PLOT PLAN  
 PRELIMINARY PLAT- NOT FOR RECORDATION,  
 CONVEYANCE OR SALES

REV CODE: 1.FLIP, 2.PLAN, 3.ROTATE, 4.MOVE, 5.SS  
 6.SEVERAL OF ABOVE, 7.LAND FEATURE, 8. OTHER

DATE: OCT. 20, 2023

F.B. \_\_\_\_\_

**RWK, PA**  
**ENGINEERING ~ SURVEYING**  
 CORPORATE LICENSE: C-1771  
 101 W. MAIN ST., SUITE 202  
 GARNER, NC 27529  
 PHONE (919) 779-4854  
 FAX (919) 779-4056