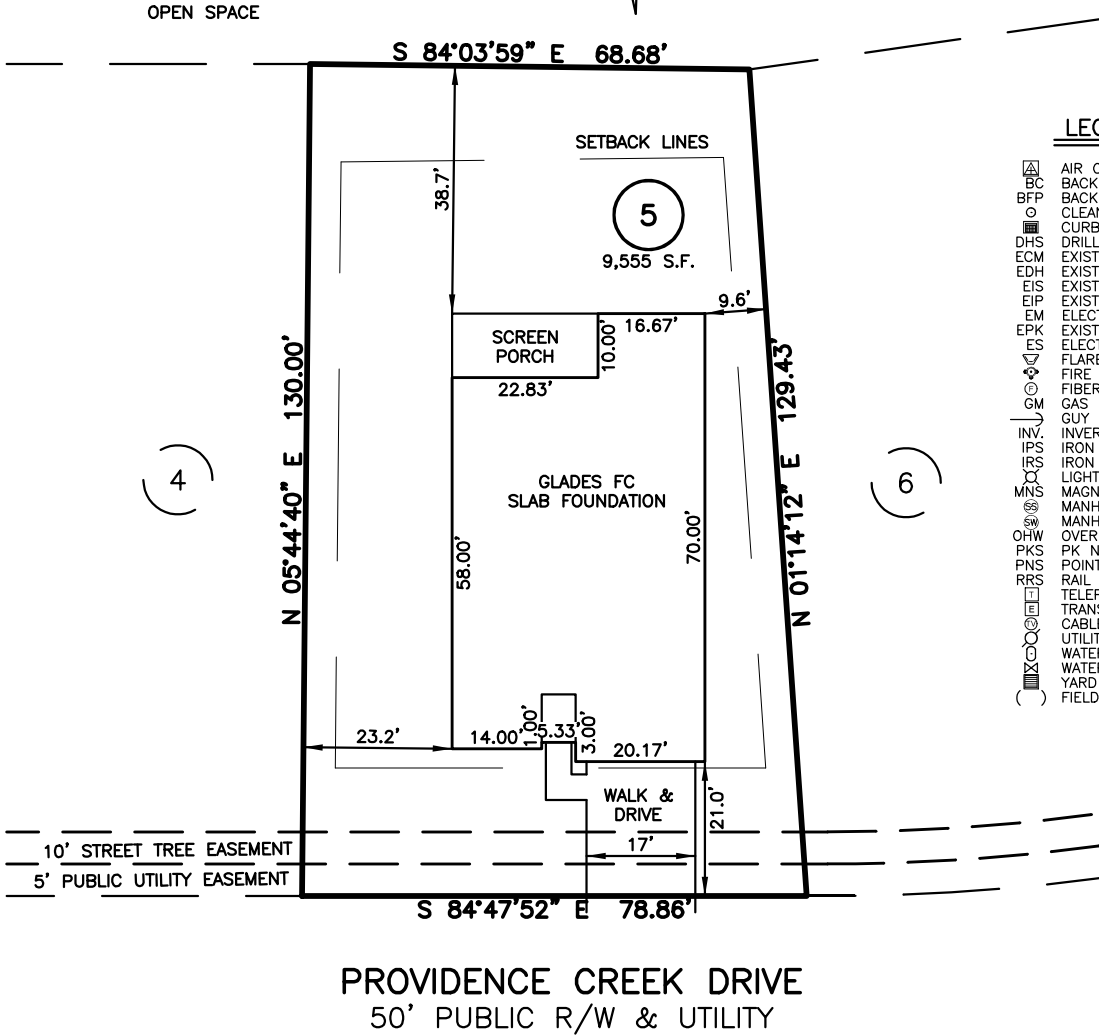


PLOT PLAN FOR
MATTAMY HOMES
 135 PROVIDENCE CREEK DRIVE
 LOT 5, PROVIDENCE CREEK PHASE 1
 HECTORS CREEK AND BLACK RIVER TOWNSHIP, HARNETT COUNTY, NORTH CAROLINA



LEGEND

- △ AIR CONDITIONER
- BC BACK of CURB
- BFP BACK FLOW PREVENTER
- CLEANOUT
- CURB INLET
- DHS DRILL HOLE SET
- ECM EXISTING CONCRETE MONUMENT
- EDH EXISTING DRILL HOLE
- EIS EXISTING IRON STAKE
- EIP EXISTING IRON PIPE
- EM ELECTRIC METER
- EPK EXISTING PK NAIL
- ES ELECTRIC STUB
- ▽ FLARED END SECTION
- ⊕ FIRE HYDRANT
- ⊙ FIBER OPTIC PEDESTAL
- GM GAS METER
- GUY
- INV. INVERT
- IPS IRON PIPE SET
- IRS IRON ROD SET
- LIGHT POLE
- MNS MAGNETIC NAIL SET
- ⊙ MANHOLE SANITARY SEWER
- ⊙ MANHOLE STORM SEWER
- OHW OVERHEAD WIRES
- PKS PK NAIL SET
- PNS POINT NOT SET
- RRS RAIL ROAD SPIKE
- ⊙ TELEPHONE PEDESTAL
- ⊙ TRANSFORMER
- ⊙ CABLE TV PEDESTAL
- ⊙ UTILITY POLE
- ⊙ WATER METER
- ⊙ WATER VALVE
- ⊙ YARD INLET
- () FIELD MEASUREMENT

SETBACK INFO

- FRONT: _____ 20'
- REAR: _____ 15'
- SIDES: _____ 5'
- CORNER SIDE: _____ 15'

IMPERVIOUS SURFACES	
HOUSE	2,500 S.F.
WALK & DRIVE	400 S.F.
SCREEN PORCH	230 S.F.
TOTAL	3,130 S.F.

REFERENCES:

BM 2022 PGS 346-351



SCALE: 1" = 30'

NOTES

1. THIS SURVEY SUBJECT TO ANY FACTS THAT MAY BE DISCLOSED BY A FULL AND ACCURATE TITLE SEARCH.
2. THIS MAP MAY NOT BE A CERTIFIED SURVEY AND HAS NOT BEEN REVIEWED BY A LOCAL GOVERNMENT AGENCY FOR COMPLIANCE WITH ANY APPLICABLE LAND DEVELOPMENT REGULATIONS AND HAS NOT BEEN REVIEWED FOR COMPLIANCE WITH RECORDING REQUIREMENTS FOR PLATS.

PLOT PLAN
 PRELIMINARY PLAT- NOT FOR RECORDATION,
 CONVEYANCE OR SALES

REV CODE: 1.FLIP, 2.PLAN, 3.ROTATE, 4.MOVE, 5.SS
 6.SEVERAL OF ABOVE, 7.LAND FEATURE, 8. OTHER

DATE: OCT. 5, 2023

F.B. _____

RWK, PA

ENGINEERING ~ SURVEYING

CORPORATE LICENSE: C-1771
 101 W. MAIN ST., SUITE 202
 GARNER, NC 27529
 PHONE (919) 779-4854
 FAX (919) 779-4056