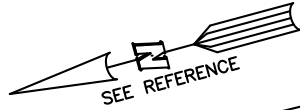


PLOT PLAN FOR  
**NEW HOME INC., LLC**  
 65 WILLOW CREEK PLACE  
 LOT 36, WOODBRIDGE SOUTH  
 BUCKHORN TOWNSHIP, HARNETT COUNTY, NORTH CAROLINA

CRISSY & JOEL RICKER  
 D.B. 3244, PG. 888  
 P.C. # F SLIDE 540C



**LEGEND**

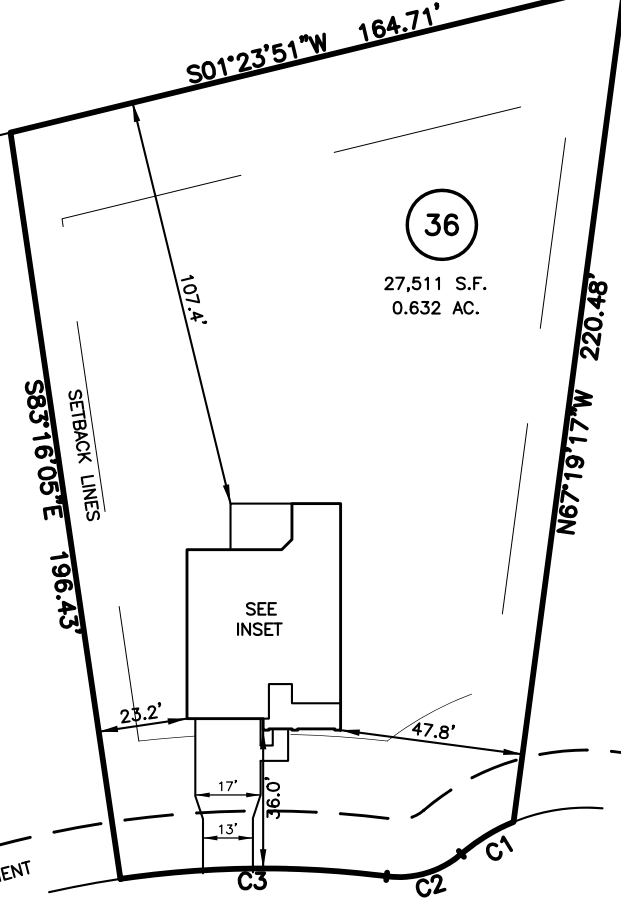
- △ AIR CONDITIONER
- BC BACK OF CURB
- BFP BACK FLOW PREVENTER
- CLEANOUT
- CURB INLET
- DHS DRILL HOLE SET
- ECM EXISTING CONCRETE MONUMENT
- EDH EXISTING DRILL HOLE
- EIS EXISTING IRON STAKE
- EIP EXISTING IRON PIPE
- EM ELECTRIC METER
- EPK EXISTING PK NAIL
- ES ELECTRIC STUB
- FLA FLARED END SECTION
- FHY FIRE HYDRANT
- FOP FIBER OPTIC PEDESTAL
- GM GAS METER
- GUY GUY
- INV INVERT
- IPS IRON PIPE SET
- IRS IRON ROD SET
- LIGHT POLE
- MNS MAGNETIC NAIL SET
- MSW MANHOLE SANITARY SEWER
- MSW MANHOLE STORM SEWER
- OHV OVERHEAD WIRES
- PKS PK NAIL SET
- PNS POINT NOT SET
- RRS RAIL ROAD SPIKE
- TEL TELEPHONE PEDESTAL
- TRN TRANSFORMER
- CTV CABLE TV PEDESTAL
- UP UTILITY POLE
- WM WATER METER
- WV WATER VALVE
- YI YARD INLET
- ( ) FIELD MEASUREMENT

(37)

(36)

27,511 S.F.  
0.632 AC.

(35)

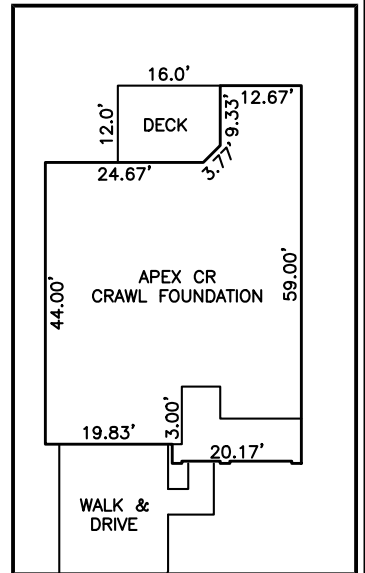


15' UTILITY EASEMENT

**WILLOW CREEK PLACE**  
 50' PUBLIC R/W & UTILITY EASEMENT

CURVE	RADIUS	ARC LENGTH	CHORD LENGTH	CHORD BEARING	DELTA ANGLE
C1	50.00'	15.98'	15.91'	S16°21'37\"E	18°18'38"
C2	25.00'	20.89'	20.29'	S01°34'32\"E	47°52'48"
C3	255.00'	69.57'	69.36'	S14°32'57\"W	15°37'57"

IMPERVIOUS SURFACES	
HOUSE	1,980 S.F.
WALK & DRIVE	660 S.F.
DECK	190 S.F.
TOTAL	2,830 S.F.
MAX IMPERVIOUS	4,000 S.F.



INSET: SCALE: 1"=30'

**SETBACK INFO**

- FRONT: \_\_\_\_\_ 35'
- REAR: \_\_\_\_\_ 25'
- SIDES: \_\_\_\_\_ 10'
- CORNER SIDE: \_\_\_\_\_ 20'



SCALE: 1" = 50'

**NOTES**

1. THIS SURVEY SUBJECT TO ANY FACTS THAT MAY BE DISCLOSED BY A FULL AND ACCURATE TITLE SEARCH.
2. THIS MAP MAY NOT BE A CERTIFIED SURVEY AND HAS NOT BEEN REVIEWED BY A LOCAL GOVERNMENT AGENCY FOR COMPLIANCE WITH ANY APPLICABLE LAND DEVELOPMENT REGULATIONS AND HAS NOT BEEN REVIEWED FOR COMPLIANCE WITH RECORDING REQUIREMENTS FOR PLATS.

**REFERENCES:**

P.B. 2023, PGS 92-94

PLOT PLAN  
 PRELIMINARY PLAT- NOT FOR RECORDATION,  
 CONVEYANCE OR SALES

REV CODE: 1.FLIP, 2.PLAN, 3.ROTATE, 4.MOVE, 5.SS  
 6.SEVERAL OF ABOVE, 7.LAND FEATURE, 8. OTHER

REV1: OCT. 30, 2023(8)  
 DATE: OCT. 20, 2023

Q:\FieldLoc\

RWK, PA

**ENGINEERING ~ SURVEYING**

CORPORATE LICENSE: C-1771  
 101 W. MAIN ST., SUITE 202  
 GARNER, NC 27529  
 PHONE (919) 779-4854  
 FAX (919) 779-4056