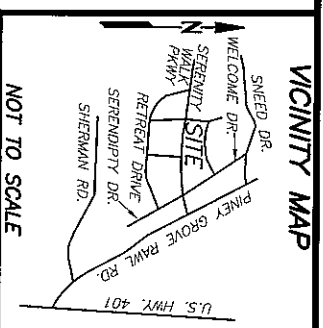


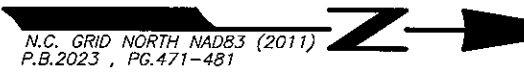
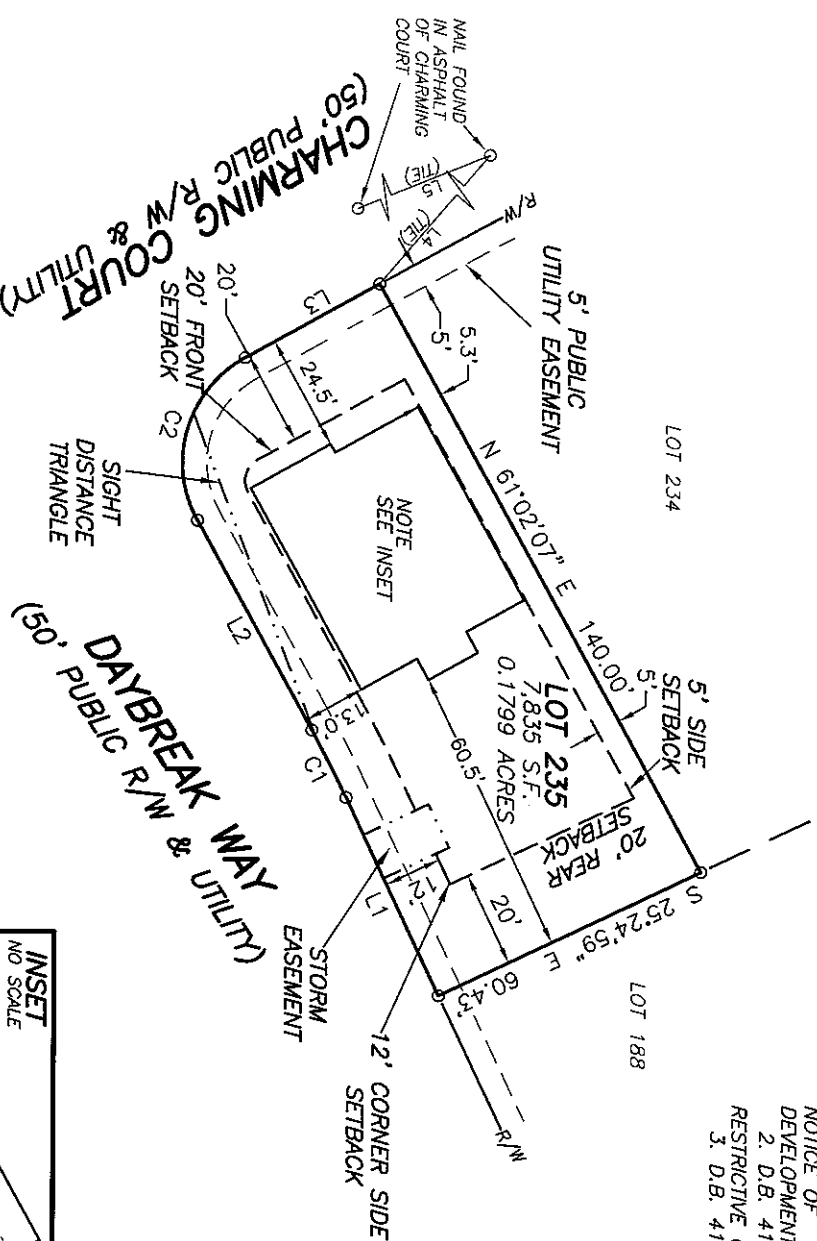
CURVE TABLE						
CURVE	DELTA	RADIUS	ARC	CHORD	TANGENT	CHORD BRG
C1	3°32'53"	255.00'	15.79'	15.79'	7.90'	S 62°48'34" W
C2	90°00'00"	25.00'	39.27'	35.36'	25.00'	N 73°57'53" W

LINE TABLE	
LINE	BEARING DISTANCE
L1	S 64°35'01" W 45.64'
L2	S 61°02'07" W 49.93'
L3	N 28°57'53" W 32.00'
L4	N 49°48'54" W 94.47'
L5	S 22°10'56" E 143.16'



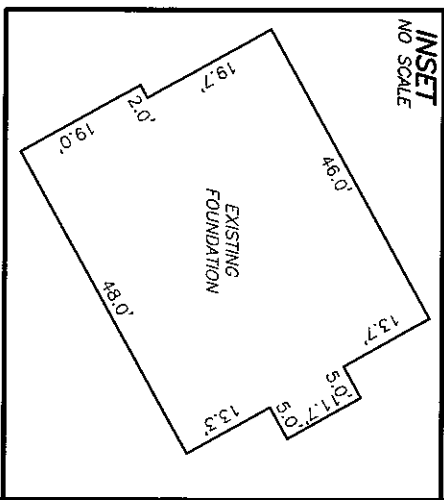
REFERENCES:
 1. D.B. 4209, PG. 2421
 PIN: 0645-93-1290.000
 PID: 08065502 0032 75

NOTICE OF DEVELOPMENT GUIDELINES:
 2. D.B. 4149, PG. 210
 RESTRICTIVE COVENANTS:
 3. D.B. 4109, PG. 612



N.C. GRID NORTH NAD83 (2011) (1110)
 P.B.2023, PG.471-481

SETBACKS
 243' LOT WIDTHS
 FRONT YARD-20'
 SIDE YARD-5'
 REAR YARD-20'
 CORNER SIDE-12'

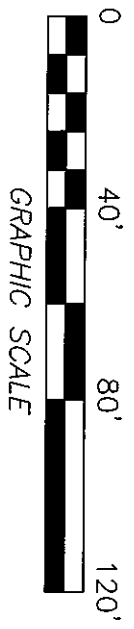


- NOTES:
1. ALL EASEMENTS, RIGHTS OF WAY AND BOUNDARY INFORMATION TAKEN FROM P.B. 2023, PG. 471-481 UNLESS OTHERWISE NOTED.
 2. PROPERTY IS SUBJECT TO ALL EASEMENTS AND RESTRICTIONS OF RECORD. NO TITLE EXAMINATION HAS BEEN DONE BY ROBINSON & PLANTE, P.C.

NOTE:
 RATIO OF PRECISION IS 1:10,000+. ENCLOSURE WAS DISTRIBUTED BY THE COMPASS METHOD. THE DISTANCES ON THIS MAP ARE ADJUSTED HORIZONTAL GROUND UNLESS NOTED OTHERWISE. ALL AREAS ARE CALCULATED BY COORDINATE COMPUTATION.

LOT 235 SERENITY SUBDIVISION
PHASE 2E
12 CHARMING COURT
HARNETT COUNTY
FUQUAY-VARINA, N.C. 27526

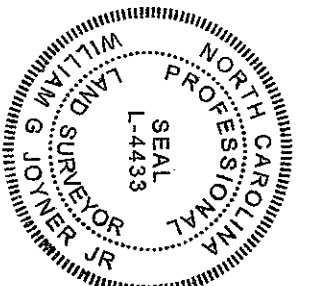
REFERENCE: PLAT BOOK 2023 PAGE 471-481.



FILE: STYLO1235FD

I CERTIFY THAT THIS MAP WAS DRAWN UNDER MY SUPERVISION FROM AN ACTUAL SURVEY MADE UNDER MY SUPERVISION. DESCRIPTION RECORDED IN REFERENCES AS SHOWN. THAT THE BOUNDARIES NOT SURVEYED ARE INDICATED AS DRAWN FROM INFORMATION IN _____ THAT THE RATIO OF PRECISION IS 1:10,000. AND THAT THIS MAP MEETS THE REQUIREMENTS OF THE STANDARDS OF PRACTICE FOR LAND SURVEYING IN NORTH CAROLINA (21 NCAC 56.16000). THIS 4th DAY OF JANUARY 2024.

William H. Ferguson
 PROFESSIONAL LAND SURVEYOR L44433



ROBINSON & PLANTE PC
 LAND SURVEYING
 C-2687
 970 TRINITY ROAD
 RALEIGH, N.C. 27607
 PHONE (919) 859-6030
 FAX (919) 859-6032

DATE: 1-3-24 SCALE: 1"=40'