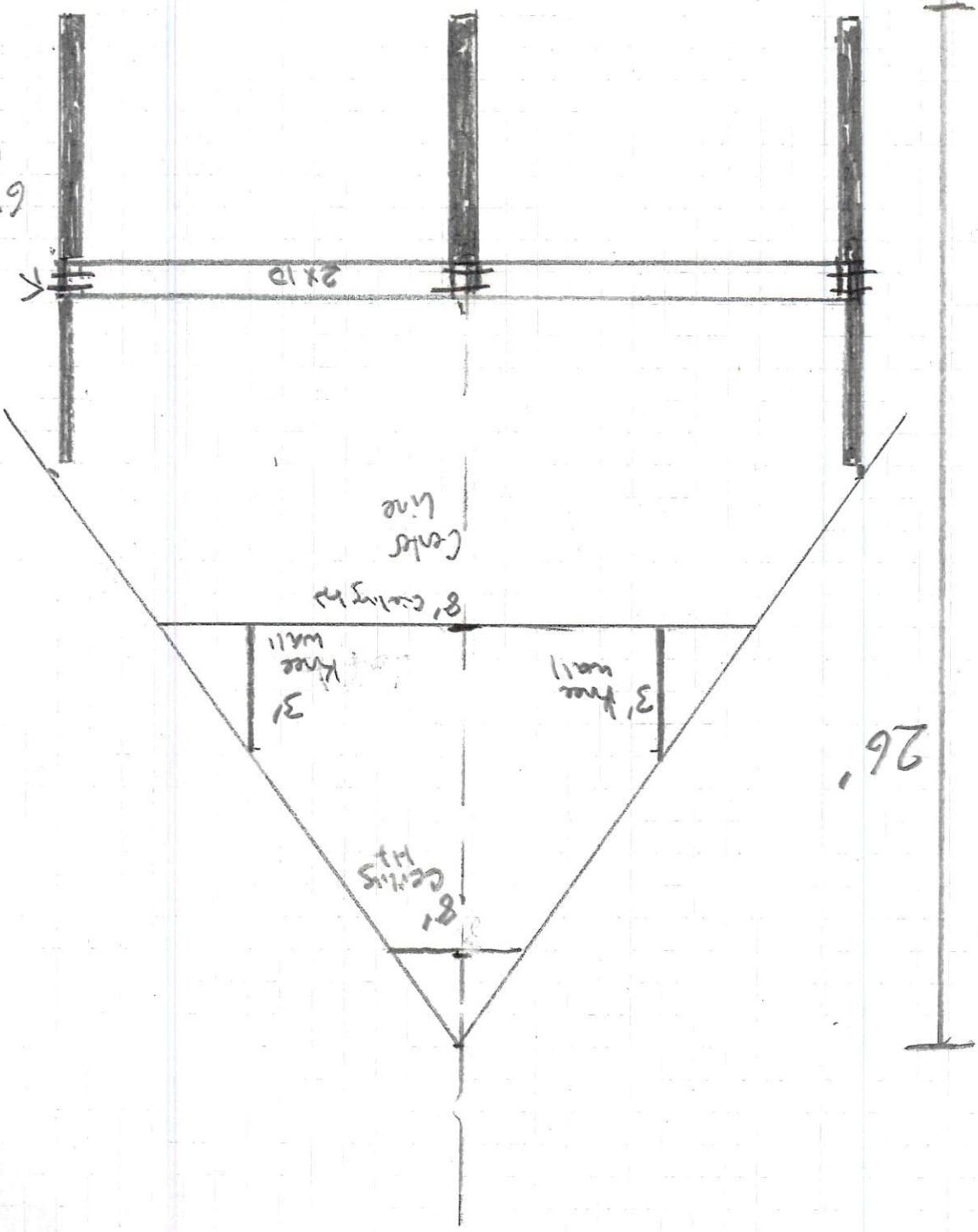
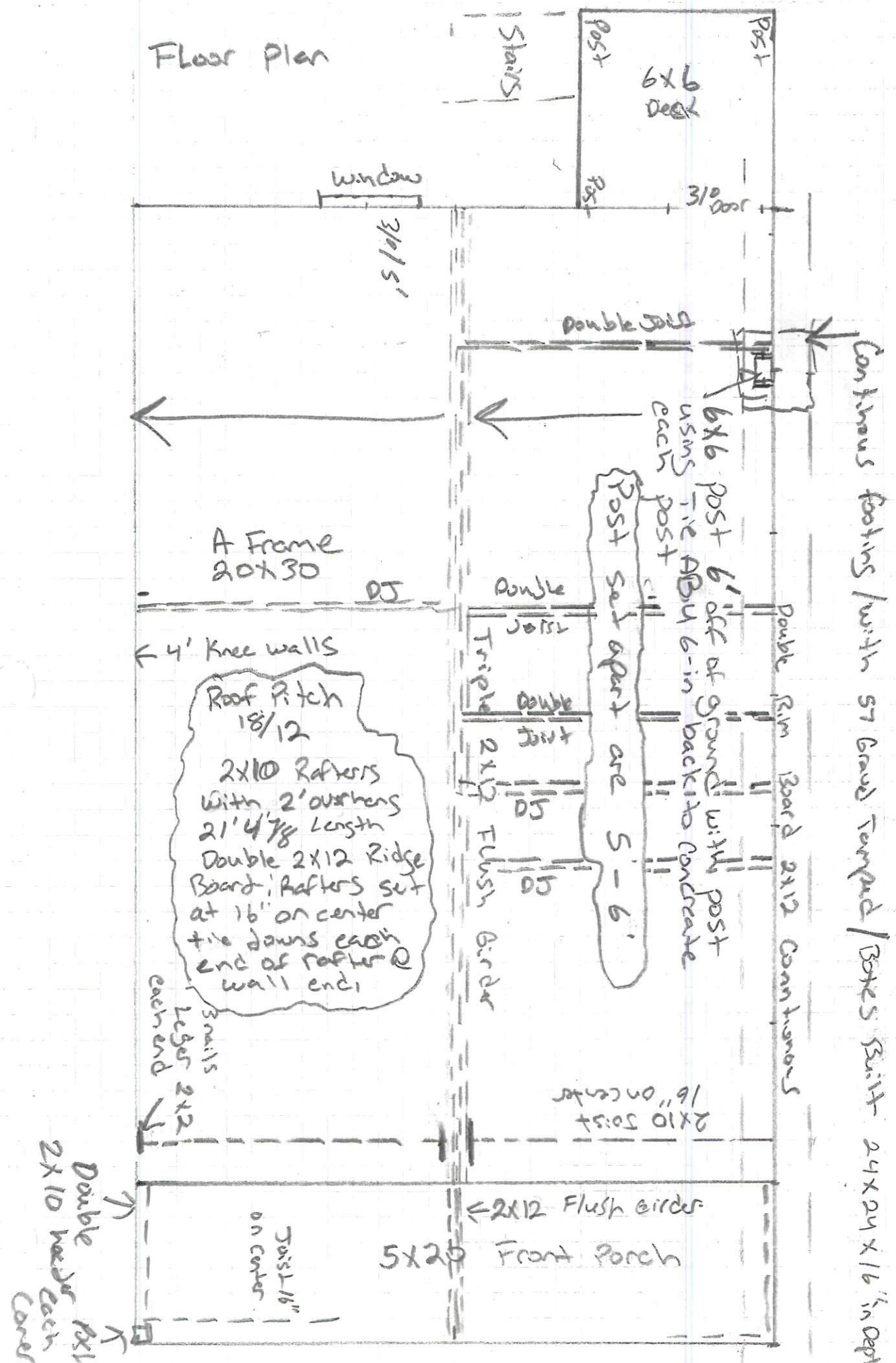


notched for post for 6x6 with 8" 5/8 coverage bolts



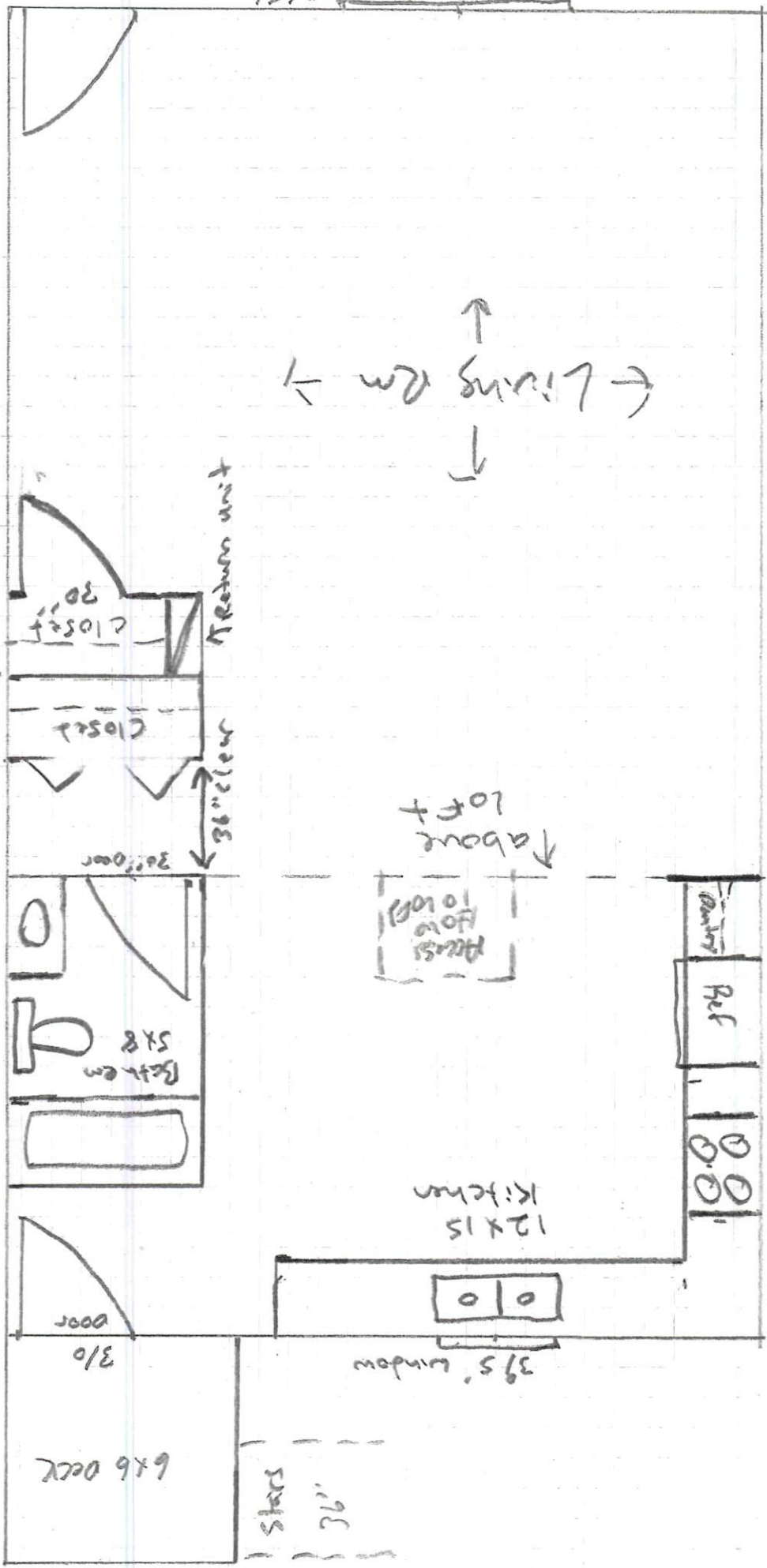
A frame built on stilts  
20x30

Floor Plan



15'6" 2' 2' 3' 8' 4' 6'

Double doors 30/5'



Living Rm

Refrigerator unit

closet

closet

36" door

Access floor to loft above

Bath 5x8

Qty Ref

12x15 Kitchen

39.5" window

6x6 deck

stairs 36"

3/0 door

6x6  
deck

2x10 Joist  
16 on center  
Span  
14'6"  
nailed  
to Rafter  
on Lags

Loft 10x12 OS

Hanger  
Hanger

OS OS

3x4

Hanger

OS

Access ladder hole to loft