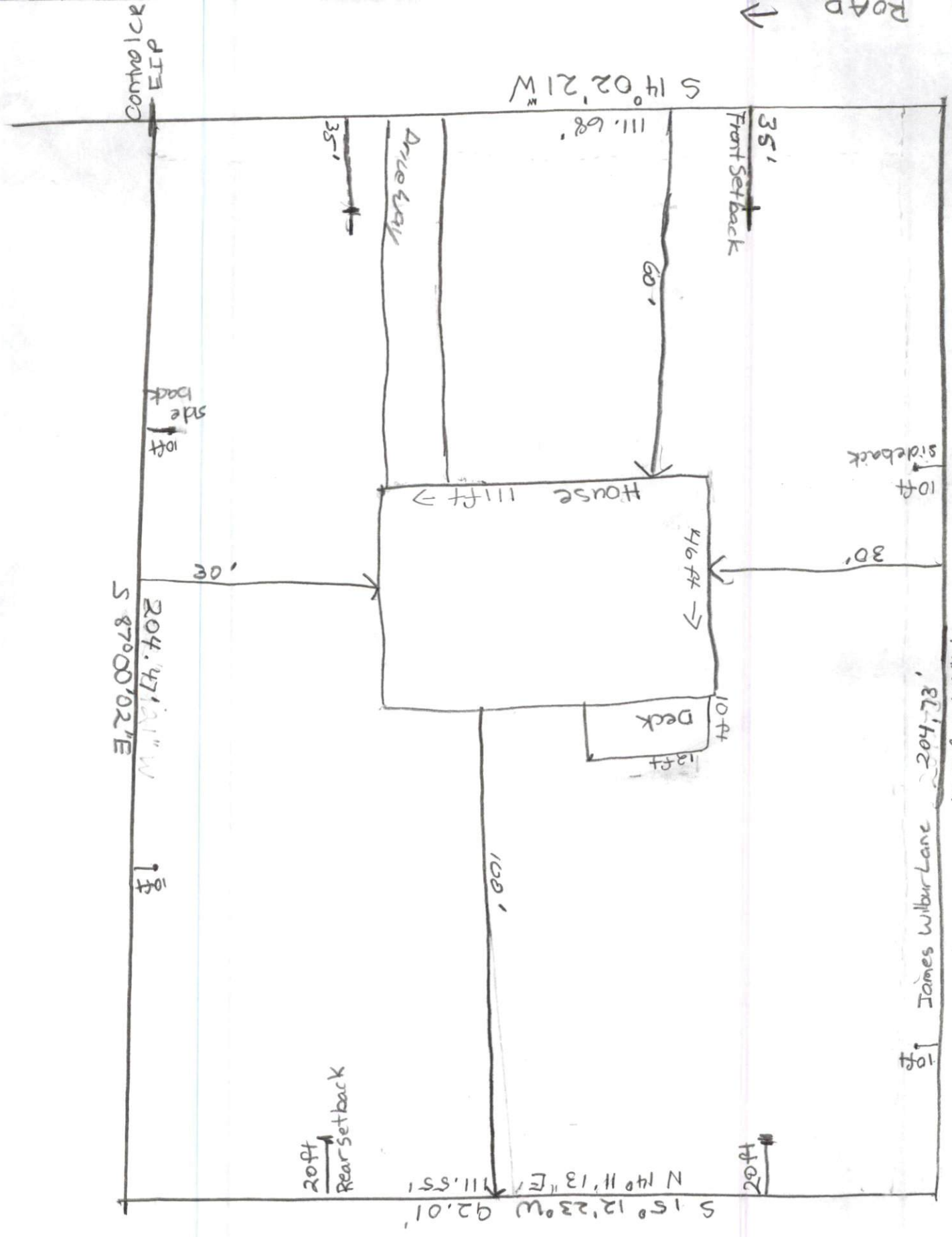


Robn Hughes
 DR. 2017, Pg. 89
 22,410 sq. feet
 (0.51 AC.)

9574-38-5888

Existing 30' Access + Utility Easement



James Wilbur Lane 204.73'

204.47121' W

S 14° 02' 21" W

S 15° 12' 23" W 92.01'

N 14° 11' 13" E 111.551'

35' Front Setback

20ft Rear Setback

10ft side back

10ft side back

30'

46ft

10ft

Deck 13ft

100'

35'

Driveway

Control EIP

10ft

10ft

ROAD

MARKS

