



COMMENTS: \_\_\_\_\_

LANDSCAPE POSITIONS	GROUP	TEXTURES	.1955 LTAR	CONSISTENCE MOIST	WET
R-RIDGE	I	S-SAND	1.2 - 0.8	VFR-VERY FRIABLE	NS-NON-STICKY
S-SHOULDER SLOPE		LS-LOAMY SAND		FR-FRIABLE	SS-SLIGHTLY STICKY
L-LINEAR SLOPE	II	SL-SANDY LOAM	0.8 - 0.6	FI-FIRM	S-STICKY
FS-FOOT SLOPE		L-LOAM		VFI-VERY FIRM	VS-VERY STICKY
N-NOSE SLOPE	III	SI-SILT	0.6 - 0.3	EFI-EXTREMELY FIRM	NP-NON-PLASTIC
H-HEAD SLOPE		SIL-SILT LOAM			SP-SLIGHTLY STICKY
CC-CONCLAVE SLOPE		CL-CLAY LOAM			P-PLASTIC
CV-CONVEX SLOPE		SCL-SANDY CLAY LOAM			VP-VERY PLASTIC
T-TERRACE	IV	SIC-SILTY CLAY	0.4 - 0.1		
FP-FLOOD PLAN		C-CLAY			
		SC-SANDY CLAY			

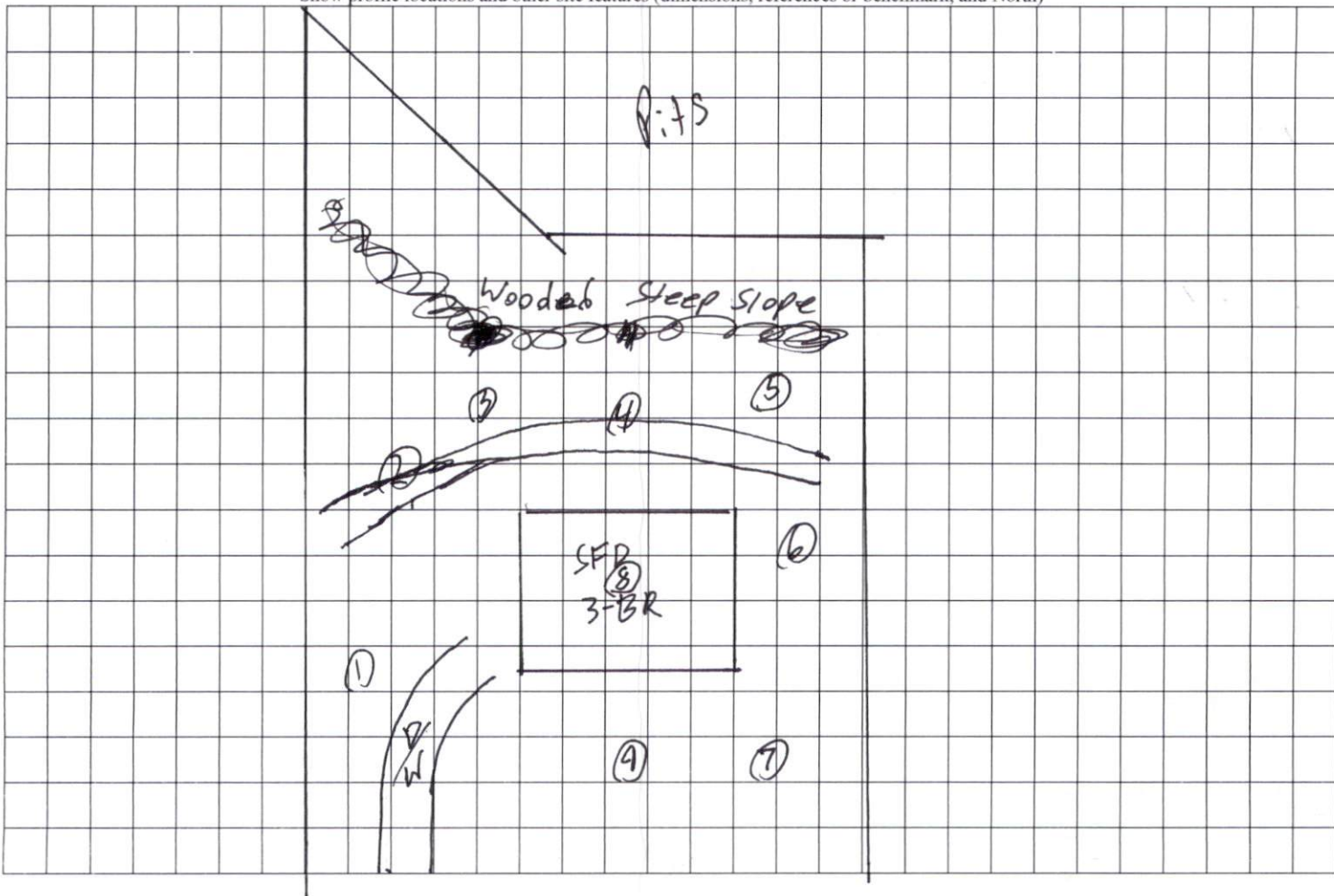
STRUCTURE

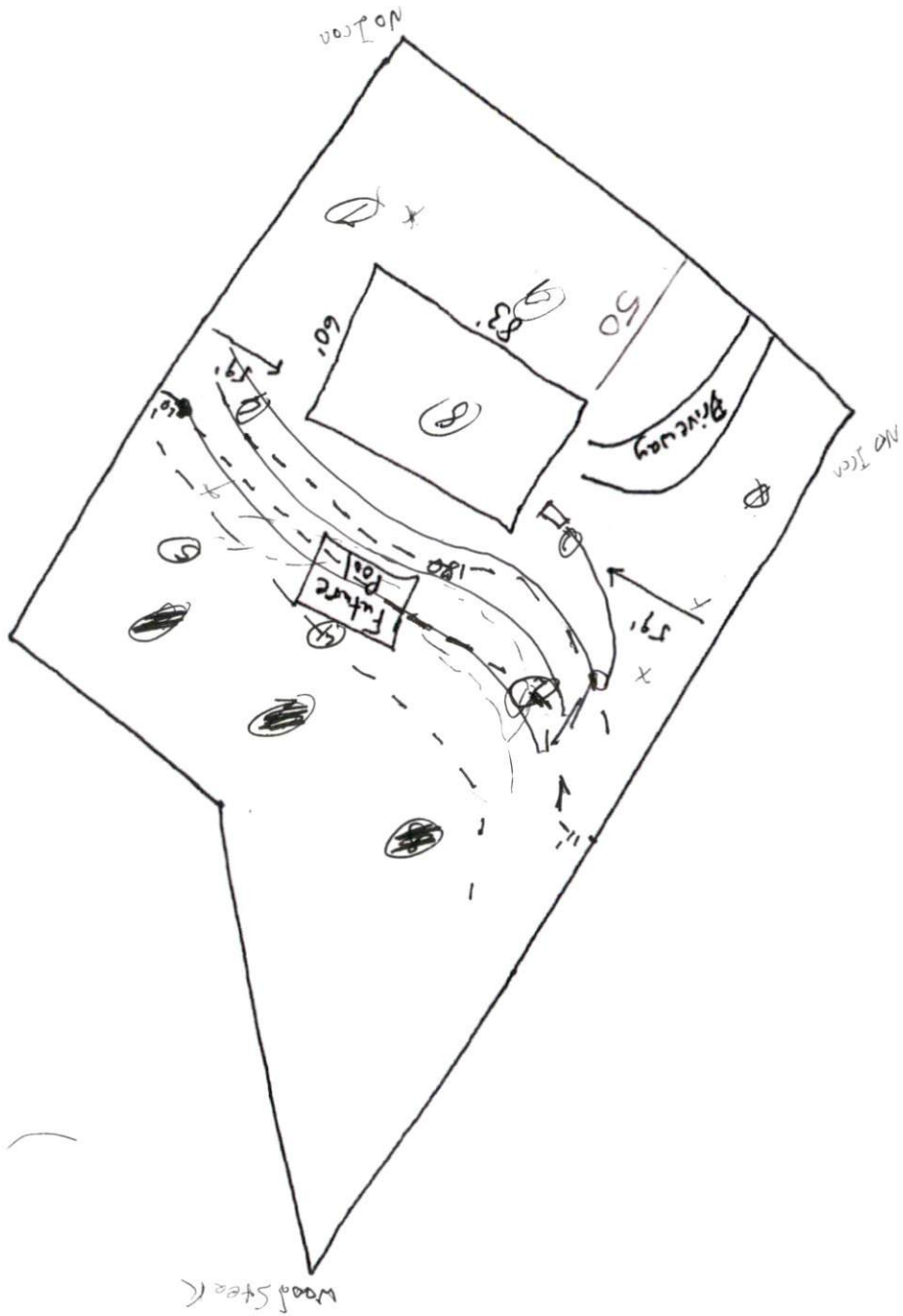
- SG-SINGLE GRAIN
- M- MASSIVE
- CR-CRUMB
- GR-GRANULAR
- SBK-SUBANGULAR BLOCKY
- ABK-ANGULAR BLOCKY
- PL-PLATY
- PR-PRISMATIC

MINERALOGY

- SLIGHTLY EXPANSIVE
- EXPANSIVE

Show profile locations and other site features (dimensions, references or benchmark, and North)

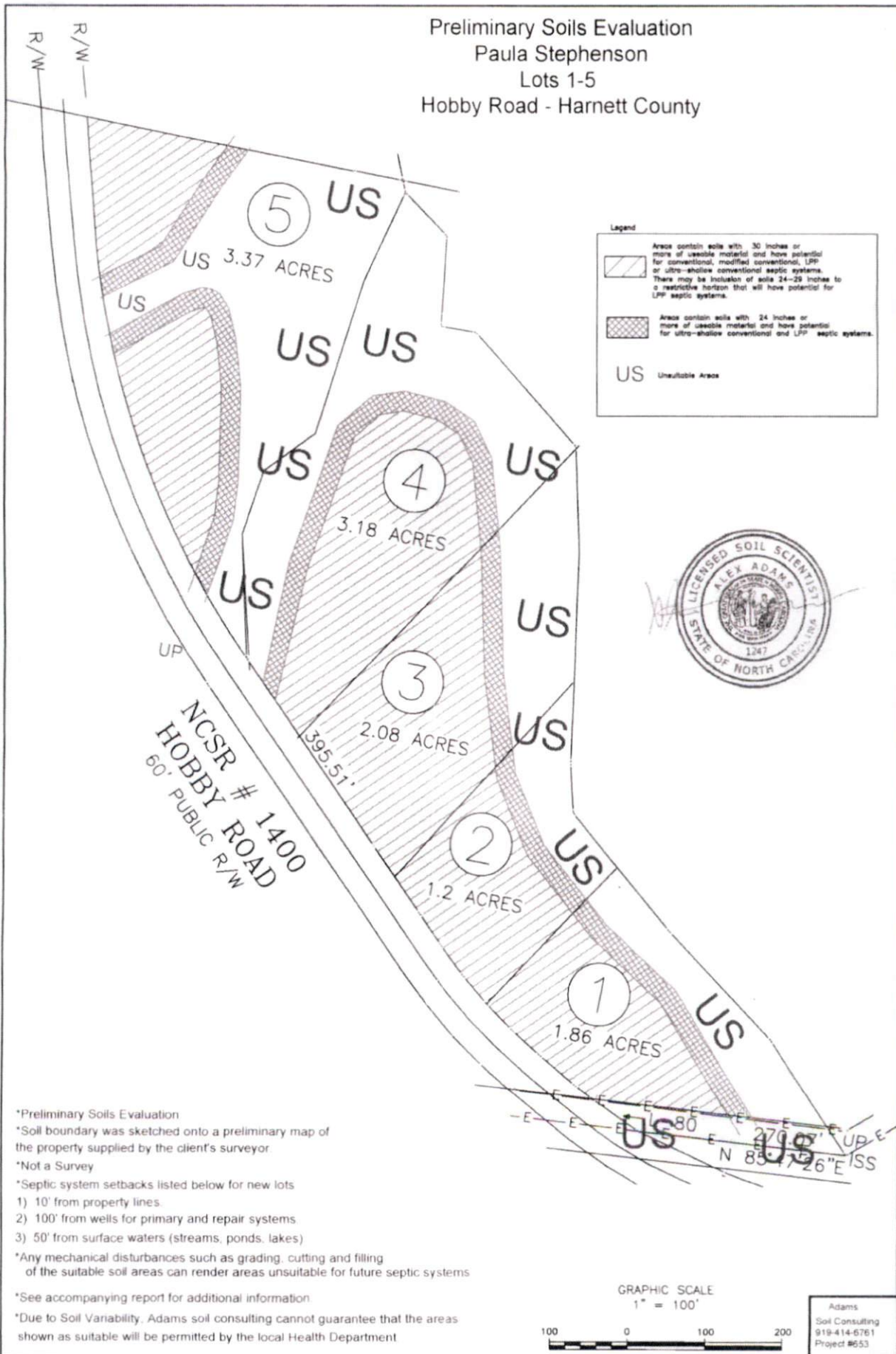






\* Needs I can  
clearly marked  
\* Needs pits

188 Hobby Rd.

Preliminary Soils Evaluation  
 Paula Stephenson  
 Lots 1-5  
 Hobby Road - Harnett County

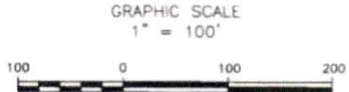


**Legend**

-  Areas contain soils with 30 inches or more of useable material and have potential for conventional, modified conventional, LPP or ultra-shallow conventional septic systems. There may be inclusion of soils 24-29 inches to a restrictive horizon that will have potential for LPP septic systems.
-  Areas contain soils with 24 inches or more of useable material and have potential for ultra-shallow conventional and LPP septic systems.
- US Unsuitable Areas



\*Preliminary Soils Evaluation  
 \*Soil boundary was sketched onto a preliminary map of the property supplied by the client's surveyor.  
 \*Not a Survey  
 \*Septic system setbacks listed below for new lots  
 1) 10' from property lines.  
 2) 100' from wells for primary and repair systems  
 3) 50' from surface waters (streams, ponds, lakes)  
 \*Any mechanical disturbances such as grading, cutting and filling of the suitable soil areas can render areas unsuitable for future septic systems  
 \*See accompanying report for additional information.  
 \*Due to Soil Variability, Adams soil consulting cannot guarantee that the areas shown as suitable will be permitted by the local Health Department



Adams  
 Soil Consulting  
 919-414-6761  
 Project #653