



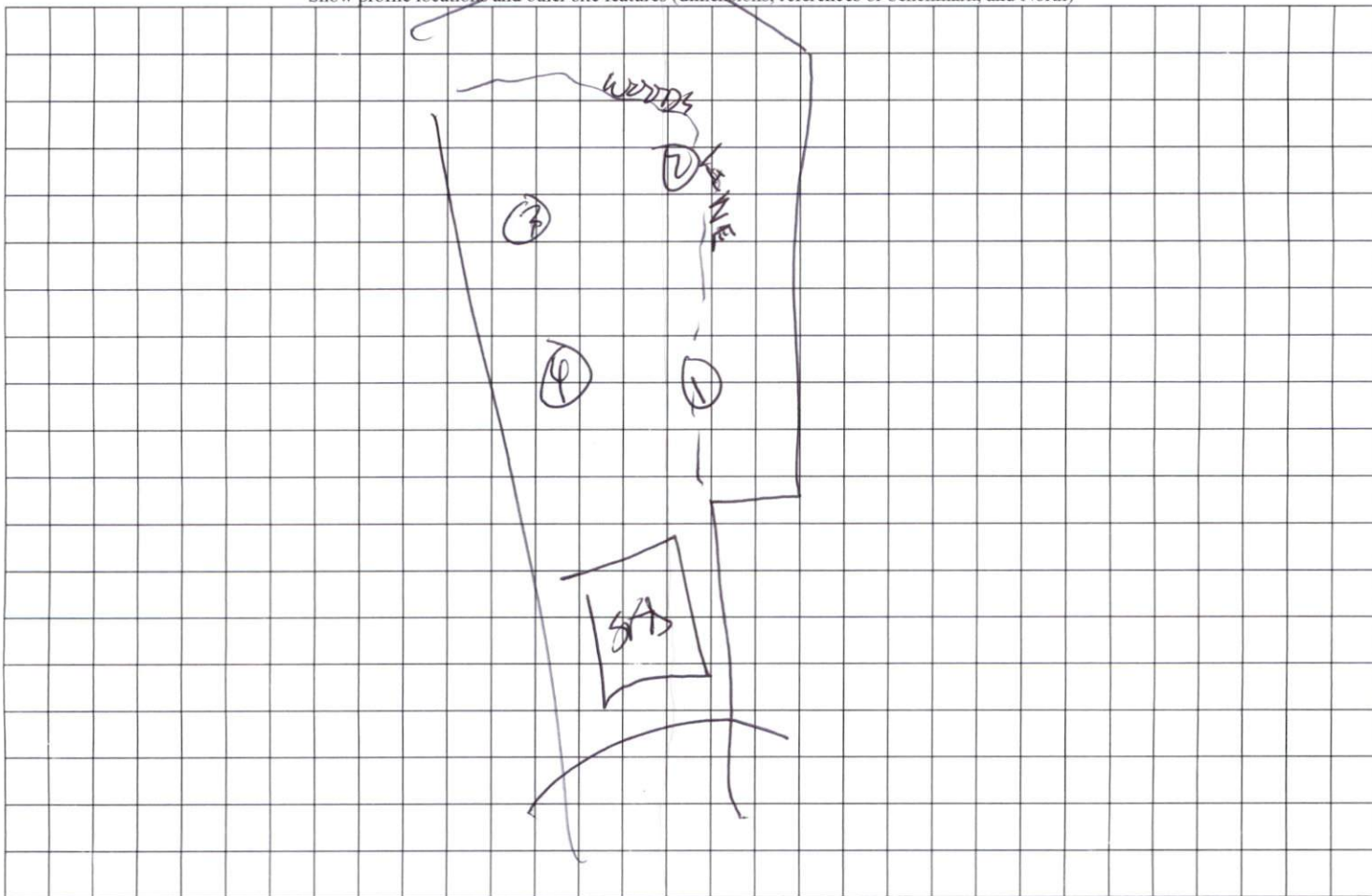
COMMENTS: \_\_\_\_\_

LANDSCAPE POSITIONS	GROUP	TEXTURES	.1955 LTAR	CONSISTENCE MOIST	WET
R-RIDGE	I	S-SAND	1.2 - 0.8	VFR-VERY FRIABLE FR-FRIABLE	NS-NON-STICKY SS-SLIGHTLY STICKY
S-SHOULDER SLOPE		LS-LOAMY SAND			
L-LINEAR SLOPE	II	SL-SANDY LOAM	0.8 - 0.6	FI-FIRM VFI-VERY FIRM EFI-EXTREMELY FIRM	S-STICKY VS-VERY STICKY NP-NON-PLASTIC SP-SLIGHTLY STICKY
FS-FOOT SLOPE		L-LOAM			
N-NOSE SLOPE	III	SI-SILT	0.6 - 0.3		P-PLASTIC VP-VERY PLASTIC
H-HEAD SLOPE		SIL-SILT LOAM			
CC-CONCLAVE SLOPE		CL-CLAY LOAM			
CV-CONVEX SLOPE		SCL-SANDY CLAY LOAM			
T-TERRACE	IV	SIC-SILTY CLAY	0.4 - 0.1		
FP-FLOOD PLAN		C-CLAY SC-SANDY CLAY			

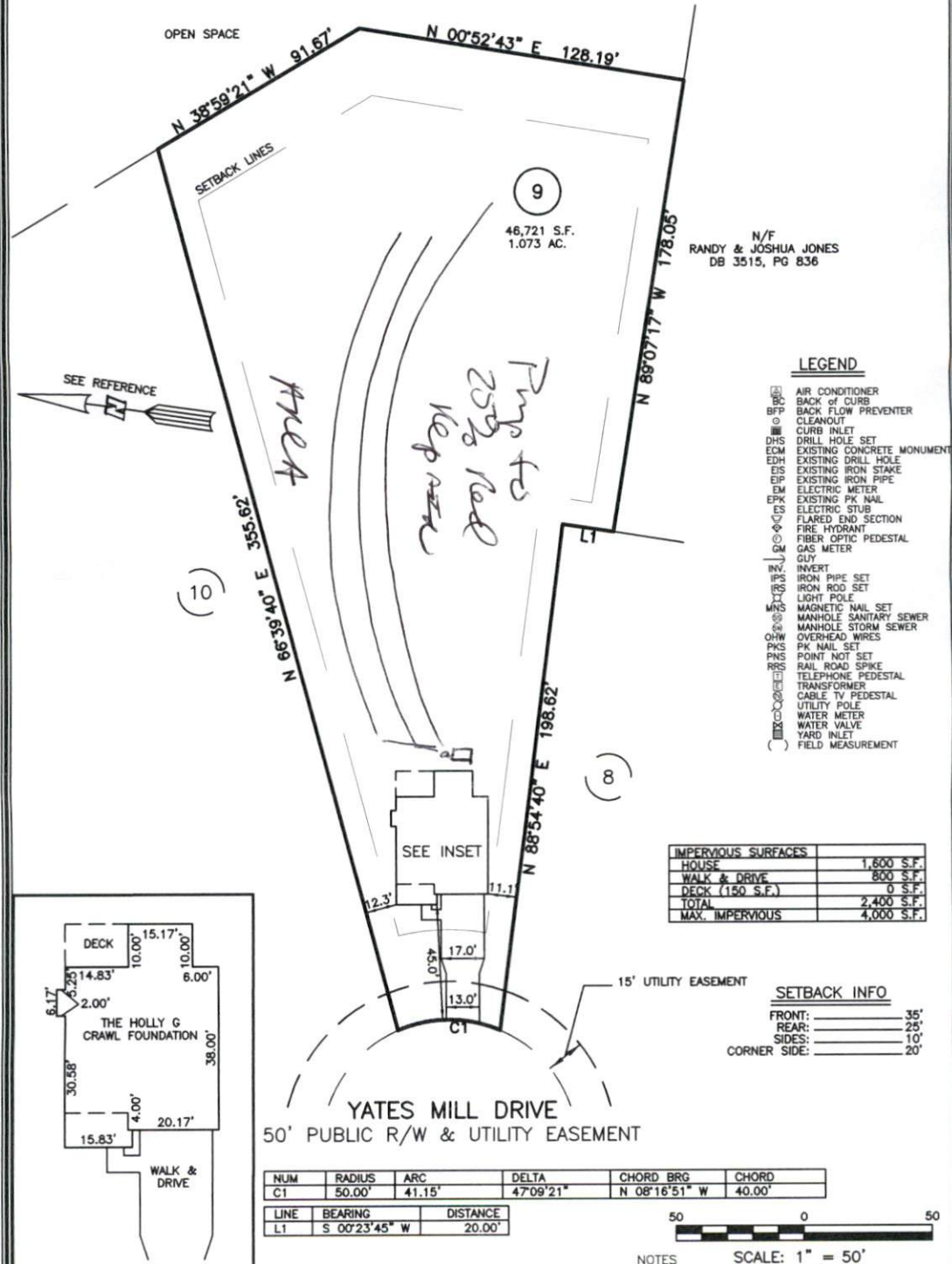
STRUCTURE  
 SG-SINGLE GRAIN  
 M- MASSIVE  
 CR-CRUMB  
 GR-GRANULAR  
 SBK-SUBANGULAR BLOCKY  
 ABK-ANGULAR BLOCKY  
 PL-PLATY  
 PR-PRISMATIC

MINERALOGY  
 SLIGHTLY EXPANSIVE  
 EXPANSIVE

Show profile locations and other site features (dimensions, references or benchmark, and North)



PLOT PLAN FOR  
**NEW HOME INC., LLC**  
 338 YATES MILL DRIVE  
 LOT 9, WOODBRIDGE SOUTH  
 BUCKHORN TOWNSHIP, HARNETT COUNTY, NORTH CAROLINA

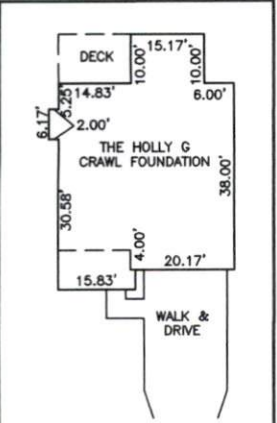


N/F  
 RANDY & JOSHUA JONES  
 DB 3515, PG 836

- LEGEND**
- AC AIR CONDITIONER
  - BC BACK OF CURB
  - BFP BACK FLOW PREVENTER
  - CLEANOUT
  - CURB INLET
  - DHS DRILL HOLE SET
  - ECM EXISTING CONCRETE MONUMENT
  - EDH EXISTING DRILL HOLE
  - EIS EXISTING IRON STAKE
  - EIP EXISTING IRON PIPE
  - EM ELECTRIC METER
  - EPK EXISTING PK NAIL
  - ES ELECTRIC STUB
  - FE FLARED END SECTION
  - FH FIRE HYDRANT
  - FOP FIBER OPTIC PEDESTAL
  - GM GAS METER
  - GUY GUY
  - INV INVERT
  - IPS IRON PIPE SET
  - IRS IRON ROD SET
  - LP LIGHT POLE
  - MNS MAGNETIC NAIL SET
  - MS MANHOLE SANITARY SEWER
  - MSW MANHOLE STORM SEWER
  - OHV OVERHEAD WIRES
  - PKS PK NAIL SET
  - PNS POINT NOT SET
  - RSS RAIL ROAD SPIKE
  - TEP TELEPHONE PEDESTAL
  - TR TRANSFORMER
  - CTV CABLE TV PEDESTAL
  - UP UTILITY POLE
  - WM WATER METER
  - WV WATER VALVE
  - YI YARD INLET
  - ( ) FIELD MEASUREMENT

IMPERVIOUS SURFACES	
HOUSE	1,600 S.F.
WALK & DRIVE	800 S.F.
DECK (150 S.F.)	0 S.F.
TOTAL	2,400 S.F.
MAX. IMPERVIOUS	4,000 S.F.

SETBACK INFO	
FRONT:	35'
REAR:	25'
SIDES:	10'
CORNER SIDE:	20'



INSET: SCALE: 1"=30'

NUM	RADIUS	ARC	DELTA	CHORD BRG	CHORD
C1	50.00'	41.15'	47°09'21"	N 08°16'51" W	40.00'

LINE	BEARING	DISTANCE
L1	S 00°23'45" W	20.00'



SCALE: 1" = 50'

- NOTES**
- THIS SURVEY SUBJECT TO ANY FACTS THAT MAY BE DISCLOSED BY A FULL AND ACCURATE TITLE SEARCH.
  - THIS MAP MAY NOT BE A CERTIFIED SURVEY AND HAS NOT BEEN REVIEWED BY A LOCAL GOVERNMENT AGENCY FOR COMPLIANCE WITH ANY APPLICABLE LAND DEVELOPMENT REGULATIONS AND HAS NOT BEEN REVIEWED FOR COMPLIANCE WITH RECORDING REQUIREMENTS FOR PLATS.

**REFERENCES:**  
 P.B. 2023, PGS 92-94

**PLOT PLAN**  
 PRELIMINARY PLAT- NOT FOR RECORDATION,  
 CONVEYANCE OR SALES

REV CODE: 1.FLUP, 2.PLAN, 3.ROTATE, 4.MOVE, 5.SS  
 6.SEVERAL OF ABOVE, 7.LAND FEATURE, 8. OTHER

REV1: OCT. 12, 2023(4)  
 DATE: OCT. 6, 2023

F.B. \_\_\_\_\_

**RWK, PA**  
**ENGINEERING - SURVEYING**  
 CORPORATE LICENSE: C-1771  
 101 W. MAIN ST., SUITE 202  
 GARNER, NC 27529  
 PHONE (919) 779-4854  
 FAX (919) 779-4056

C:\Woodbridge\1985\1985\_8.DWG