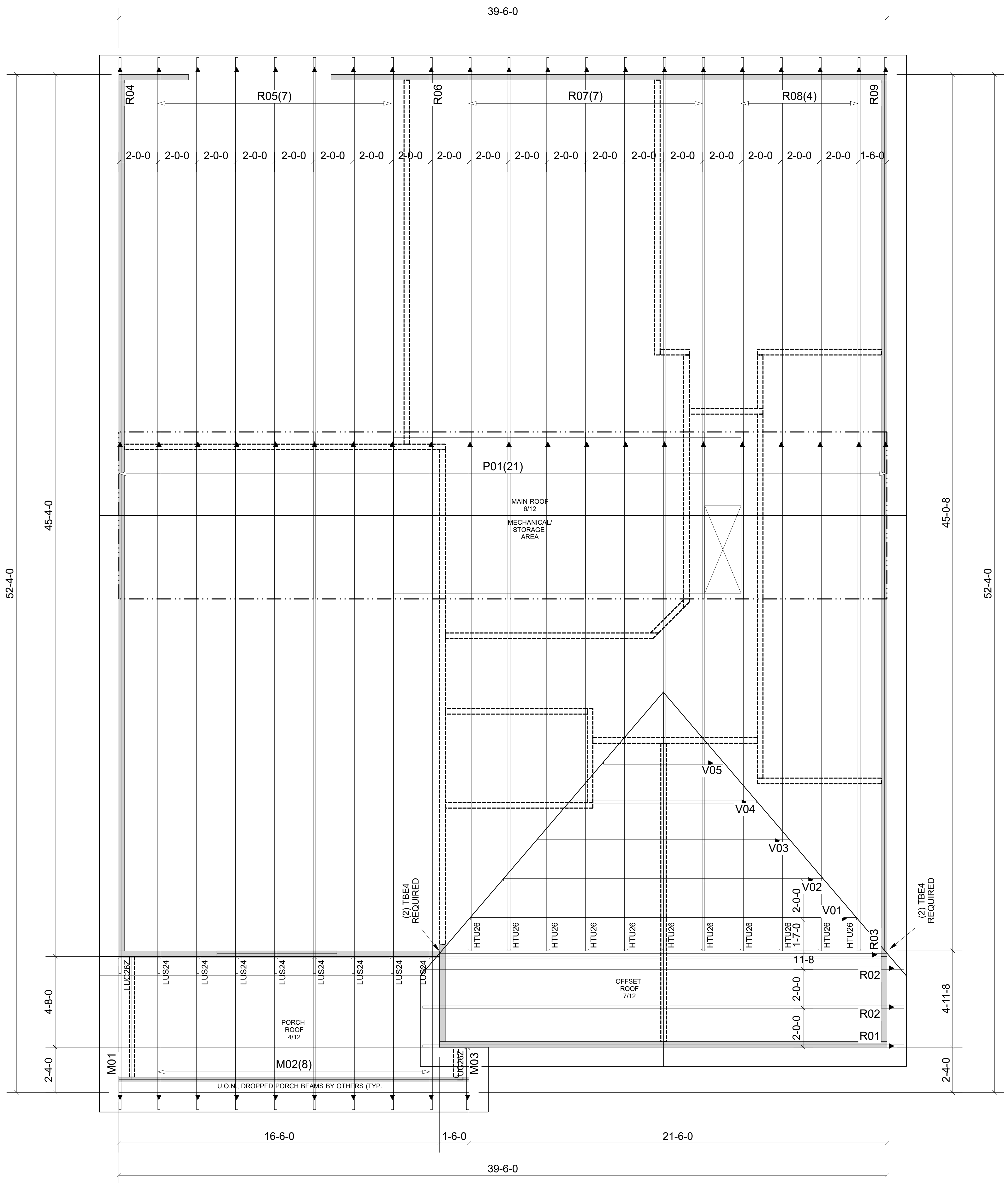


WARNING! Long span trusses, 60' or greater in length, require extreme care and experience for proper and safe handling and installation. For general handling and installation guidance, see the "Guide to Good Practice for Handling, Installing, Restraining & Bracing of Metal Plate Connected Wood Trusses ("BCS")", JOINTLY PRODUCED BY SBCA and TPI. For project specific guidance, consult with a registered design professional. ATLANTIC assumes no responsibility for the handling, installation or bracing of trusses.



| Truss Connector Total List | | |
|----------------------------|---------|-----|
| Manuf | Product | Qty |
| Simpson | HTU26 | 11 |
| Simpson | LUC26Z | 2 |
| Simpson | LUS24 | 8 |
| | TBE4 | 4 |

| Products | | | | | |
|----------|---------|--|-------|---------|--|
| PlotID | Length | Product | Plies | Net Qty | |
| BM-1 | 8-00-00 | 1-3/4" x 9-1/2" VERSA-LAM@ 2.0 3100 SP | 2 | 2 | |

▲ = LEFT END OF TRUSS

FOR PERMIT



Moncks Corner/Easley, SC (800) 475-3999
Sparta, NC (336) 372-2226

REVISIONS:

Client: **MATTAMY HOMES-RALEIGH**
Job: **LOT 24 PROVIDENCE CREEK**
Plan Information:
VOYAGEUR-FH

NOT TO SCALE

Date: 09/14/23

Drawn By: **MBB**

Job #: **23-6775-R01** Sales Rep: **KYLE GIBSON**
Phone:

ROOF