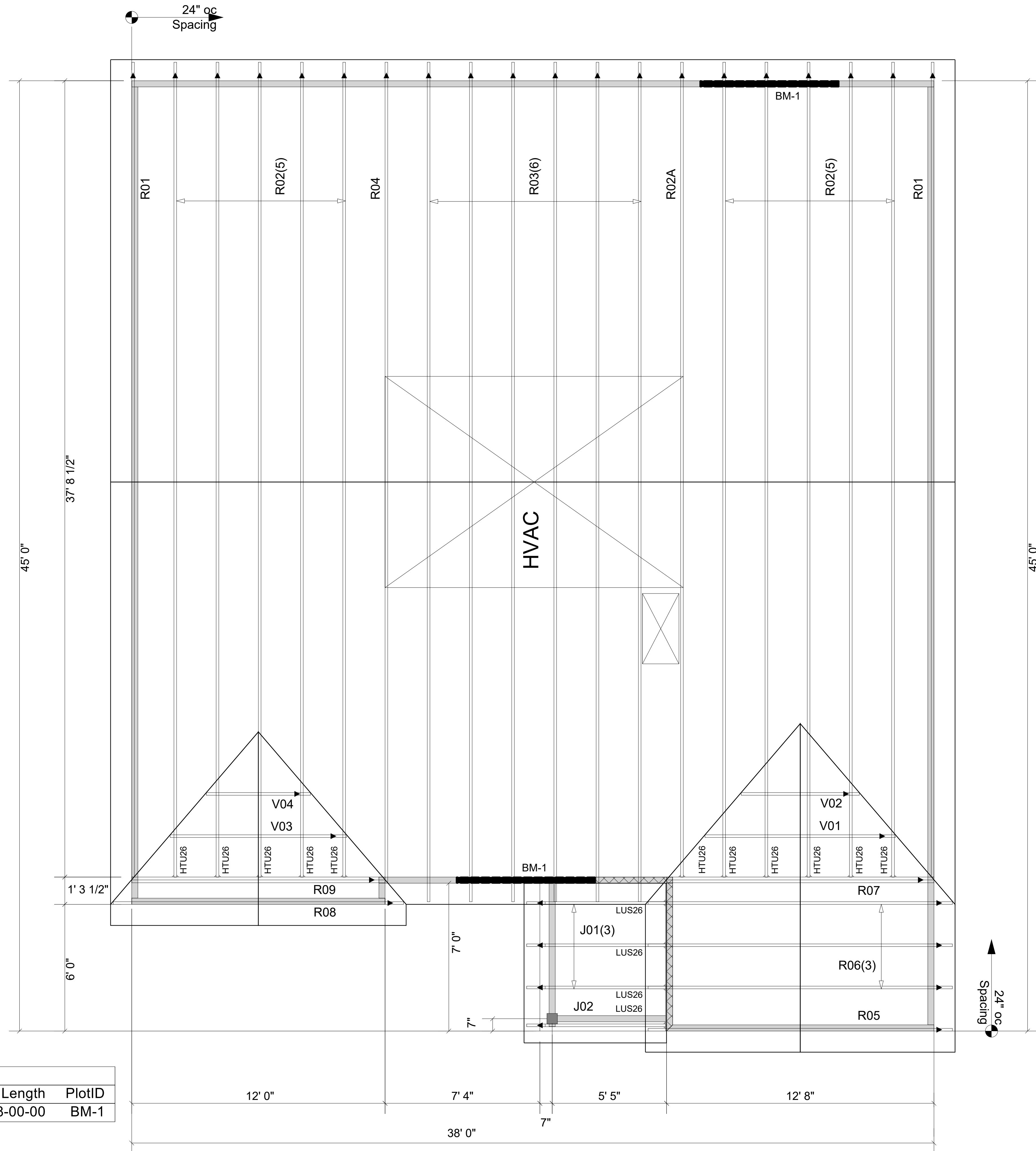


Net Qty	Plies	Product	Length	PlotID
4	2	1-3/4" x 9-1/2" VERSA-LAM® 2.0 3100 SP	8-00-00	BM-1

Truss Connector Total List		
Qty	Product	Manuf
11	HTU26	Simpson
4	LUS26	Simpson



Moncks Corner/Easley, SC (800) 475-3999  
Sparta, NC (336) 372-2226

REVISIONS:

▲ = LEFT END OF TRUSS

FOR PERMIT

Client: MATTAMY HOMES-RALEIGH

Job: LOT 50 PROVIDENCE CREEK

Plan Information: SHENANDOAH-FH

NOT TO SCALE

Drawn By: MBB

Date: 09/14/23

Job #: 23-6776-R01

Sales Rep: KYLE GIBSON

Phone: 23-6776-R01

ROOF

**WARNING!** Long span trusses, 60' or greater in length, require extreme care and experience for proper and safe handling and installation. For general handling and installation guidance, see the "Guide to Good Practice for Handling, Installing, Restraining & Bracing of Metal Plate Connected Wood Trusses ("BCSI"), JOINTLY PRODUCED BY SBCA and TPI. For project specific guidance, consult with a registered design professional. ATLANTIC assumes no responsibility for the handling, installation or bracing of trusses.