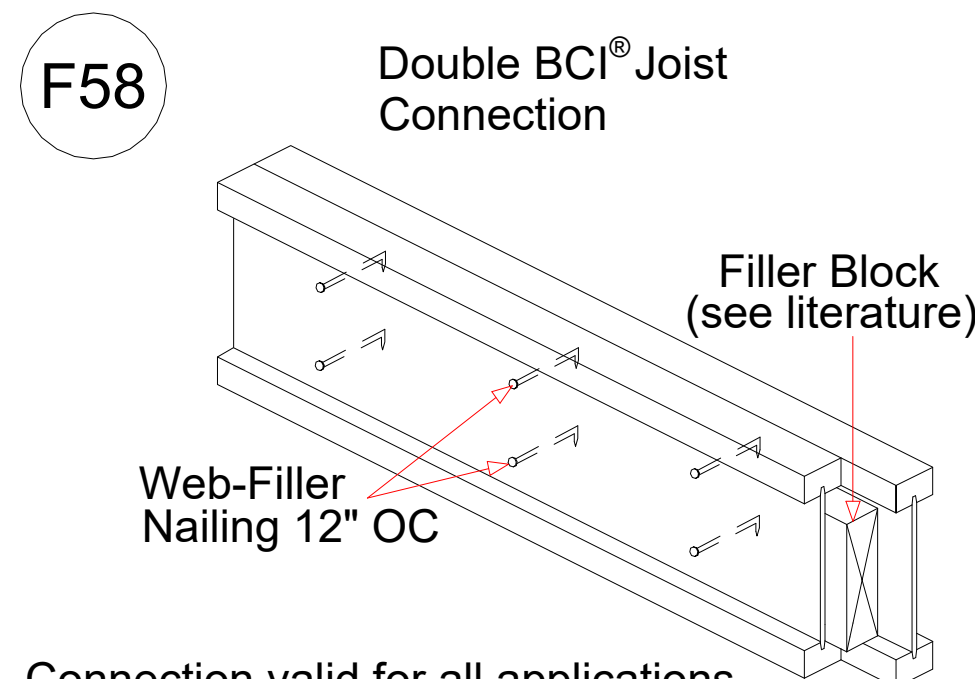


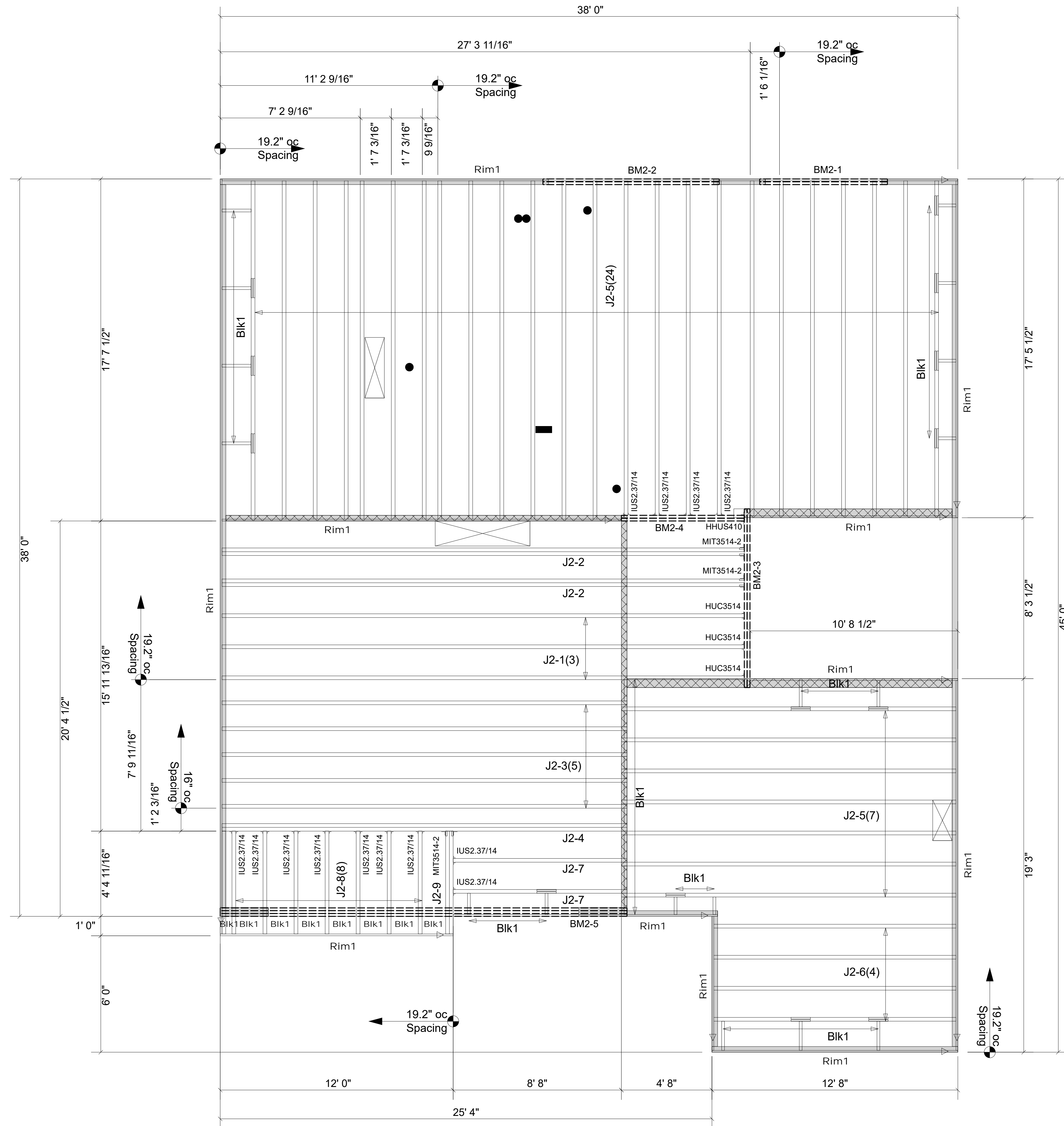
Connector Summary			
Flange	Product	Manuf	Qty
None	HHUS410	Simpson	1
None	HUC3514		3
None	IUS2.37/14	Simpson	13
None	MIT3514-2	Simpson	3

Products				
Net Qty	Plies	Product	Length	PlotID
3	1	14" BCI® 6000s-1.8	27-0-0	J2-1
4	2	14" BCI® 6000s-1.8	27-0-0	J2-2
5	1	14" BCI® 6000s-1.8	21-0-0	J2-3
2	2	14" BCI® 6000s-1.8	21-0-0	J2-4
31	1	14" BCI® 6000s-1.8	18-0-0	J2-5
4	1	14" BCI® 6000s-1.8	13-0-0	J2-6
2	1	14" BCI® 6000s-1.8	9-0-0	J2-7
8	1	14" BCI® 6000s-1.8	6-0-0	J2-8
2	2	14" BCI® 6000s-1.8	6-0-0	J2-9
2	2	1-3/4" x 9-1/2" VERSA-LAM® 2.0 3100 SP	8-0-0	BM2-1
2	2	1-3/4" x 11-7/8" VERSA-LAM® 2.0 3100 SP	10-0-0	BM2-2
2	2	1-3/4" x 14" VERSA-LAM® 2.0 3100 SP	10-0-0	BM2-3
2	2	1-3/4" x 14" VERSA-LAM® 2.0 3100 SP	8-0-0	BM2-4
3	3	1-3/4" x 18" VERSA-LAM® 2.0 3100 SP	22-0-0	BM2-5
17	1	1-1/8" x 14" BC RIM BOARD OSB	12-0-0	Rim1
36	1	14" BLOCKING	2-0-0	Blk1

Connect all 2-ply joists in the field per detail F58.



Connection valid for all applications.
Contact Boise EWP Engineering for specific conditions.



▲ = LEFT END OF TRUSS

REVISIONS:



Moncks Corner/Easley, SC (800) 475-3999
Sparta, NC (336) 372-2226

FOR PERMIT

Client: **MATTAMY HOMES-RALEIGH**
 Job: **LOT 50 PROVIDENCE CREEK**
 Plan Information: **SHENANDOAH-FH**
 Date: 09/14/23
 Job #: Sales Rep: KYLE GIBSON
 23-6776-J02 Phone: 843-729-3249
 NOT TO SCALE
 Drawn By: MBB