

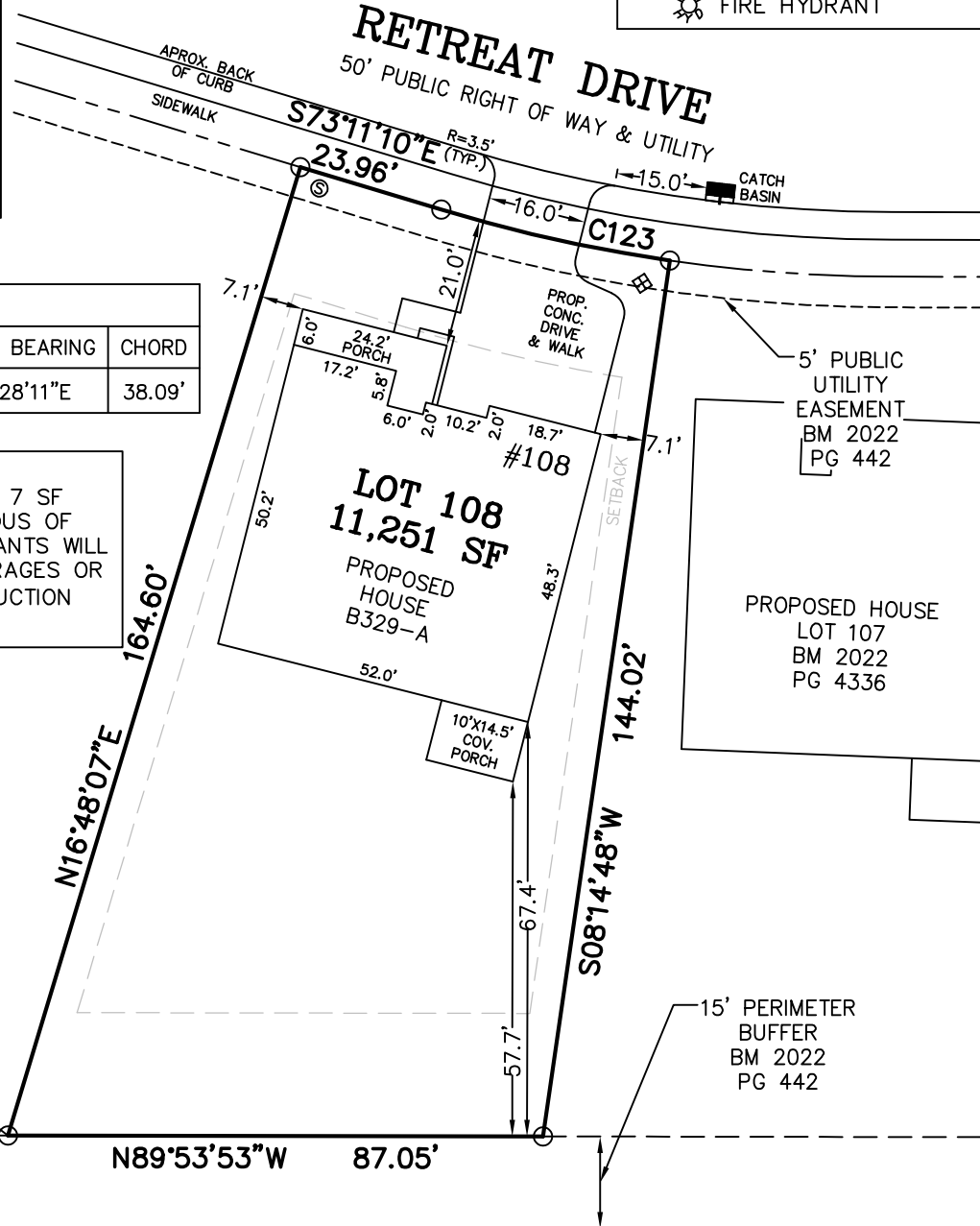
LEGEND

- MATHEMATICAL POINT
- CONTROL CORNER
- ▣ WATER METER
- ⊙ SEWER CLEAN OUT
- ⊗ FIRE HYDRANT

VICINITY MAP (NTS)

CURVE TABLE				
CURVE	LENGTH	RADIUS	CHORD BEARING	CHORD
C123	38.13'	255.00'	S77°28'11"E	38.09'

NOTE:
 THE ESTIMATED IMPERVIOUS IS 7 SF BELOW THE MAXIMUM IMPERVIOUS OF 3600 SF. MSS LAND CONSULTANTS WILL NOT BE LIABLE FOR ANY OVERAGES OR ERROR'S DUE TO THE CONSTRUCTION PROCESS.



LOT 109
 BM 2022
 PG 436



OPEN SPACE 4
 BM 2022
 PG 442

N16°48'07"E
 164.60'

N89°53'53"W 87.05'

S08°14'48"W
 144.02'

ASHLEY NICOLE MUENCH
 D.B. 3707, PG. 86
 P.I.N. 0655-12-8961.000
 P.I.D. 080655 0030 23

PABLO MARTINEZ & MARGARITA
 LOPEZ MARTINEZ
 D.B. 1845, PG. 909
 P.I.N. 0655-12-9981.000
 P.I.D. 080655 0030 22

NOTES:
 -REFERENCE HARNETT CO. BM 2022, PG 434-448 FOR BOUNDARY INFORMATION, NORTH INDEX & TIE LINES TO SUBDIVISION CONTROL CORNERS.
 -ZONED: RA-30, RA-40, & CONSERVATION.
 -SETBACKS:
 43' LOT WIDTH:
 FRONT YARD-20', SIDE YARD-4' & 4' OR 0' & 8', REAR YARD-20', CORNER YARD-12'.
 >43' LOT WIDTH:
 FRONT YARD-20', SIDE YARD-5', REAR YARD-20', CORNER YARD-12'.
 -PROPERTY IS NOT LOCATED WITHIN A SPECIAL FLOOD HAZARD AREA AS SCALED FROM THE NFIP FIRM No. 3720065500L (EFFECTIVE DATE: JULY 19, 2022).

MAXIMUM ALLOWABLE IMPERVIOUS-3,600 SF

TOTAL ESTIMATED IMPERVIOUS-3,593 SF	
SITE	SQ. FT.
HOUSE	2,684
DRIVEWAY	709
LEAD WALK	46
COV. PORCH	145
A/C PAD	9

PERMIT PLAN LOT: 108

SERENITY SUBDIVISION, PHASE 1
 HECTORS CREEK TOWNSHIP, HARNETT COUNTY, NC

SURVEYED FOR
DAVID WEEKLEY HOMES
 1901 N. HARRISON AVENUE, SUITE 200
 CARY, NC 27513

I HEREBY CERTIFY THAT THE BUILDING WILL LIE WHOLLY ON THE LOT. THIS PLAT IS OF AN EXISTING PARCEL OF LAND. THIS IS NOT A SURVEY AND NOT FOR RECORDATION PURPOSES.



MSS LAND CONSULTANTS, PC
 "Committed to Total Quality Service"
 Firm License: C-2070
 E S T. 1 9 9 8

6118 St. Giles St Phone (919) 510-4464
 (Suite E) Fax (919) 510-9102
 Raleigh, NC 27612 Email: gowersw@mssland.com

PRELIMINARY PLAN

WADE A. GOWERS, PLS L-4639

O:_DWHOMES\DWH-22-02.dwg (108.dwg, Layout1, 8/28/2023 10:10:16 AM, erawfordc, 1:1)