

Design based on plans and/or revisions dated :  
**2/14/2020**  
 Plans and/or revisions received on :  
**10/12/2023**

**THIS LAYOUT IS TO BE USED AS A TRUSS PLACEMENT GUIDE ONLY.  
 PLEASE REFER TO BUILDING PLANS FOR BUILDING CONSTRUCTION AND DETAILS,  
 SUCH AS PLUMBING OR DUCT DROPS.**

**CONSTRUCTION COPY-  
 FOR FIELD USE**

Job #

**P-10061**

**Blackman  
 1024 W Blackman  
 Dunn NC**

UNIT / Lot:

Notes:  
 1. Exterior dimensions shown are assumed to be:  
 Out-to-out of stud  
 Out-to-out of sheathing  
 Out-to-out of \_\_\_\_\_  
 2. Adjust truss locations as needed for plumbing and mechanical clearance. Unless otherwise noted, trusses may be shifted as long as O.C. spacing shown is not exceeded.  
 3. Do not cut, drill, or otherwise damage any part of any truss without prior approval from Peak Truss.  
 4. Do not approve drawings if any information herein is unclear. Once ordered trusses will be fabricated as approved.  
 5. Please contact Peak Truss Builders with any questions. We are available to help any way we can. We can be reached at 919-545-5555 or sales@peaktruss.com

Roof Truss Loading specified by building designer on Residential jobs  
 Top Chord Live Load 20.0 lb/ft²  
 Top Chord Dead Load 10.0 lb/ft²  
 Bottom Chord Live Load 0.0 lb/ft²  
 Bottom Chord Dead Load 10.0 lb/ft²

Trusses are designed for additional storage load wherever a 42"x24" box will fit between the webs.

Floor Truss Loading specified by building designer on Residential jobs

Top Chord Live Load 40.0 lb/ft²  
 Top Chord Dead Load 10.0 lb/ft²  
 Bottom Chord Live Load 0.0 lb/ft²  
 Bottom Chord Dead Load 5.0 lb/ft²

Floor Live Load deflection limit L/480  
 Roof Live Load deflection limit L/240

This layout has been designed using the IRC2015 building code.

Model created using a wind speed of 120 mph specified for Harnett County.



Scan for EWP Installation Guide.

- △ - This symbol denotes left end of truss as shown on truss drawings
- - Approximate location of toilet drop. Builder please confirm.

Truss connections by others:

- ⊞ - Nailed
- ⊞ - Ledger

**1st Floor & Low Roof Trusses**

Overhang: 12"

Depth: 24"

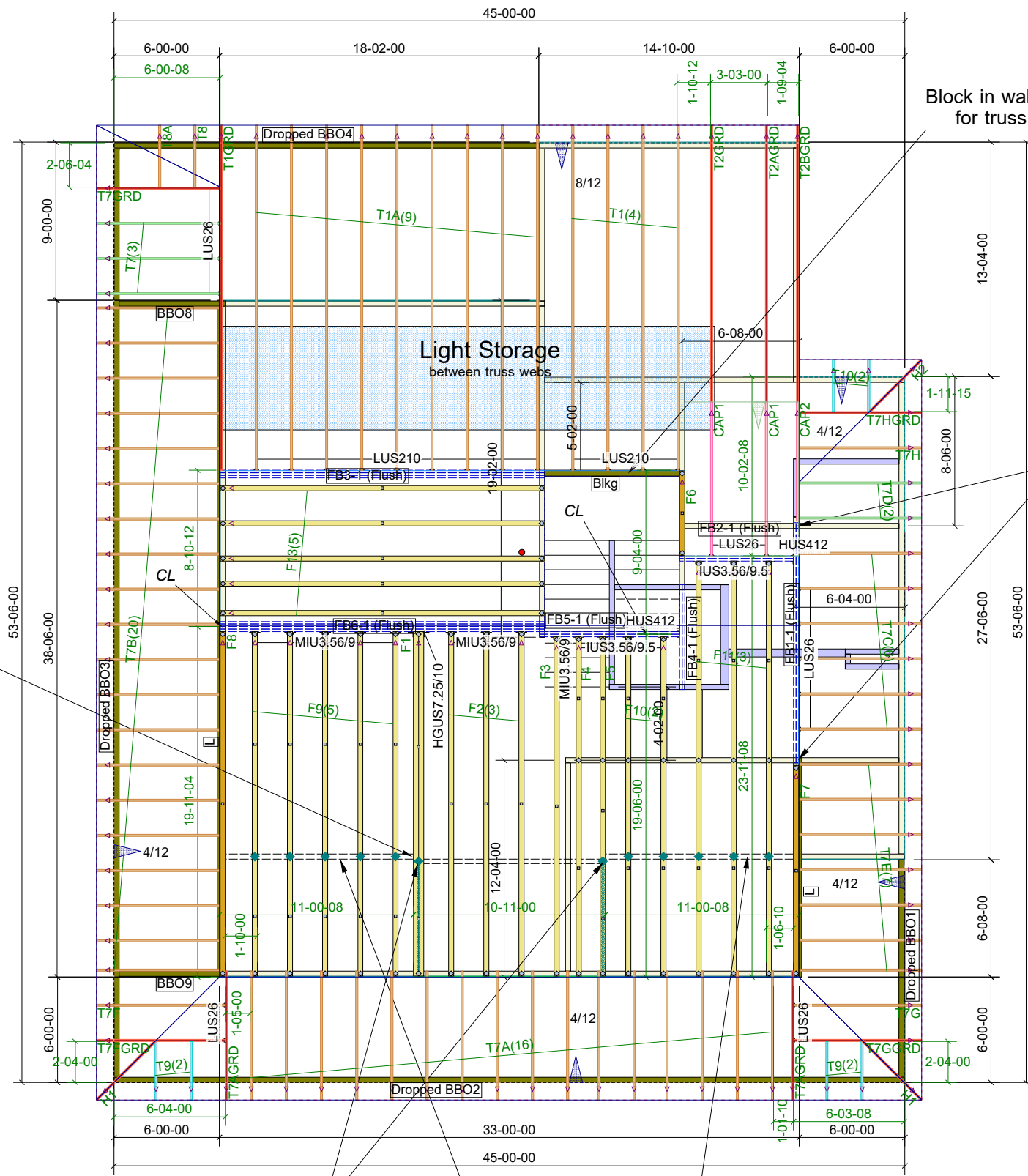
Spacing: 2' OC

**Wall Types**

- Load Bearing
- Non Load Bearing

**Pride Custom Homes, Inc**  
 P.O. Box 4178  
 Pinehurst, NC 28374

**Peak Truss Builders, LLC**  
 PO Box 340, New Hill, NC 27562



Connect 2-ply floor trusses per line 8 on detail sheet ST-2PLY\_SCREW included in delivery package

Block in wall as needed for truss hangers

Beam bearing at least 4"

Point load from girder truss above

Line load from walls above

Connector Summary		
Qty	Manuf	Product
2	Simpson	HUS412

Truss Connector Total List			
Manuf	Product	Qty	
Simpson	HGUS7.25/10	1	
Simpson	IUS3.56/9.5	7	
Simpson	LUS210	13	
Simpson	LUS26	15	
Simpson	MIU3.56/9	9	

Products				
PlotID	Length	Product	Plies	Net Qty
FB3-1 (Flush)	20-00-00	1-3/4X24 LP-LVL 2900Fb-2.0E	3	3
FB6-1 (Flush)	20-00-00	1-3/4X24 LP-LVL 2900Fb-2.0E	4	4
FB1-1 (Flush)	14-00-00	1-3/4X24 LP-LVL 2900Fb-2.0E	2	2
FB2-1 (Flush)	8-00-00	1-3/4X24 LP-LVL 2900Fb-2.0E	2	2
FB5-1 (Flush)	8-00-00	1-3/4X24 LP-LVL 2900Fb-2.0E	2	2
FB4-1 (Flush)	6-00-00	1-3/4X24 LP-LVL 2900Fb-2.0E	2	2

Design based on plans and/or revisions dated :  
**2/14/2020**  
 Plans and/or revisions received on :  
**10/12/2023**

**THIS LAYOUT IS TO BE USED AS A TRUSS PLACEMENT GUIDE ONLY.  
 PLEASE REFER TO BUILDING PLANS FOR BUILDING CONSTRUCTION AND DETAILS,  
 SUCH AS PLUMBING OR DUCT DROPS.**

**CONSTRUCTION COPY-  
 FOR FIELD USE**

Job #

**P-10061**

**Blackman  
 1024 W Blackman  
 Dunn NC**

Unit / Lot:

- Notes:
- Exterior dimensions shown are assumed to be:  
 Out-to-out of stud  
 Out-to-out of sheathing  
 Out-to-out of \_\_\_\_\_
  - Adjust truss locations as needed for plumbing and mechanical clearance. Unless otherwise noted, trusses may be shifted as long as O.C. spacing shown is not exceeded.
  - Do not cut, drill, or otherwise damage any part of any truss without prior approval from Peak Truss.
  - Do not approve drawings if any information herein is unclear. Once ordered trusses will be fabricated as approved.
  - Please contact Peak Truss Builders with any questions. We are available to help any way we can. We can be reached at 919-545-5555 or sales@peaktruss.com

Roof Truss Loading specified by building designer on Residential jobs

Top Chord Live Load	20.0 lb/ft²
Top Chord Dead Load	10.0 lb/ft²
Bottom Chord Live Load	0.0 lb/ft²
Bottom Chord Dead Load	10.0 lb/ft²

Trusses are designed for additional storage load wherever a 42"x24" box will fit between the webs.

Floor Truss Loading specified by building designer on Residential jobs

Top Chord Live Load	40.0 lb/ft²
Top Chord Dead Load	10.0 lb/ft²
Bottom Chord Live Load	0.0 lb/ft²
Bottom Chord Dead Load	5.0 lb/ft²

Floor Live Load deflection limit L/480  
 Roof Live Load deflection limit L/240

This layout has been designed using the IRC2015 building code.

Model created using a wind speed of 120 mph specified for Harnett County.

Layout Creation Date:  
**2/21/2024**

Sales: Le Greene - Designs: Aron Meeks

**Pride Custom Homes, Inc**  
 P.O. Box 4178  
 Pinehurst, NC  
 28374



Scan for EWP Installation Guide.

- △ - This symbol denotes left end of truss as shown on truss drawings
- - Approximate location of toilet drop. Builder please confirm.

Truss connections by others:

- Ⓝ - Nailed
- Ⓛ - Ledger

**Upper Roof Trusses**

Overhang: 12"

Depth: N/A

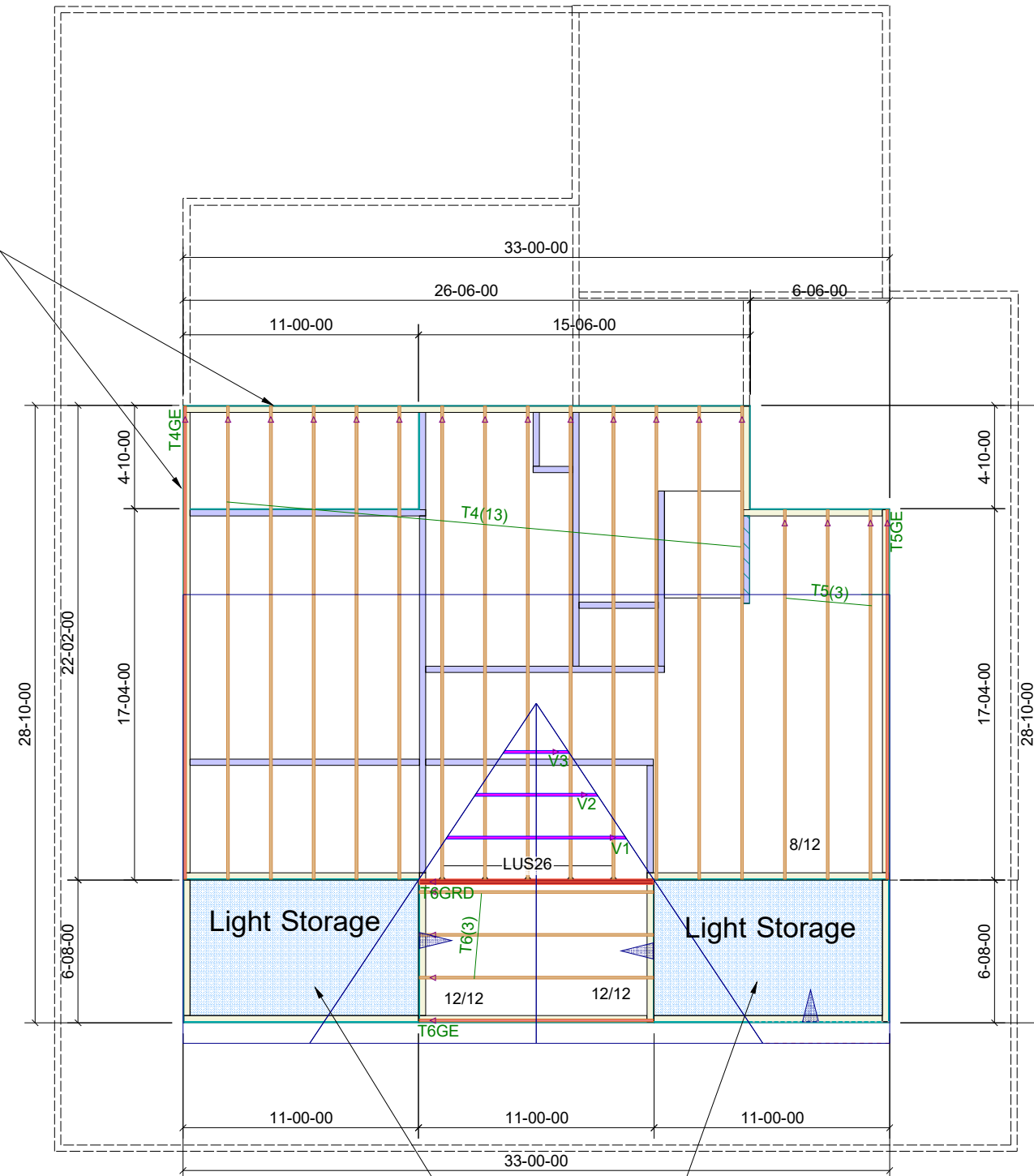
Spacing: 2' OC

**Wall Types**

	Load Bearing
	Non Load Bearing

**Peak Truss Builders, LLC**  
 PO Box 340, New Hill, NC 27562

Continue wall framing to support trusses



All truss bearings/ceilings 8'

Manuf	Product	Total Qty
Simpson	LUS26	5