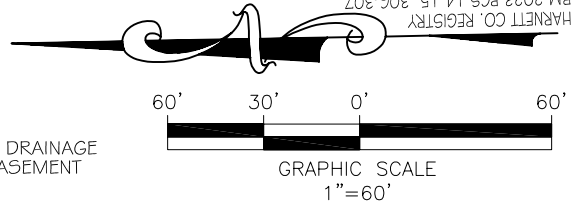


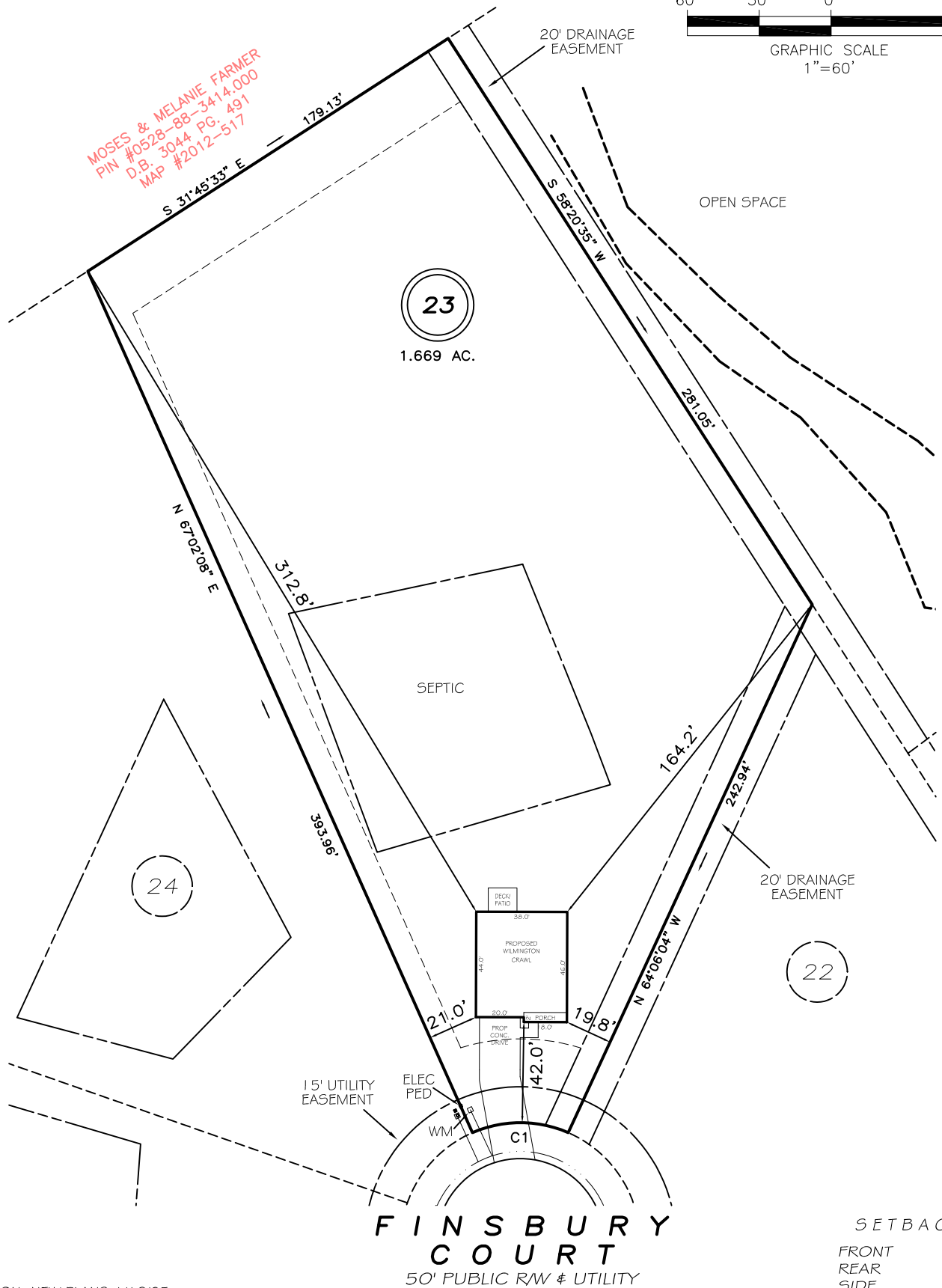
I, MICHAEL P. GRIFFIN, certify that under my direction and supervision this map was drawn from an actual field survey; that the error of closure of the survey as calculated by coordinates is 1: 10,000+; that the area shown hereon was calculated by coordinates. Dashed lines shown hereon were not surveyed.

Witness my hand and seal this day of MONTH 2023.

HARNETT CO. REGISTRY
BM 2023 PGS 14-15, 306-307



MOSES & MELANIE FARMER
PIN #0528-88-3414.000
D.B. 3044 PG. 491
MAP #2012-517



REVISION: NEW PLANS 1/10/25
REVISION: MOVE BACK 1/4/24
REVISION: ROTATE 5/16/23

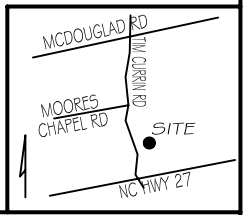
C1 R=50.00' L=41.15' N01°06'04"E 40.00'

SETBACKS

FRONT	35'
REAR	25'
SIDE	10'
CORNER SIDE	20'

LEGEND

EIP	EXISTING IRON PIPE	FES	FLARED END SECTION
IPS	IRON PIPE SET	WM	WATER METER
R/W	RIGHT OF WAY	CO	CLEAN OUT
N/F	NOW OR FORMERLY	FH	FIRE HYDRANT
EIS	EXISTING IRON STAKE	CB	CATCH BASIN



PRELIMINARY
NOT FOR RECORDATION,
SALES OR CONVEYANCE



GRIFFIN LAND SURVEYING, INC.
P. O. BOX 148
FUQUAY-VARINA, NC 27526
(919) - 567-1963
FIRM LIC.# C-1345

PLOT PLAN FOR
D.R. HORTON
MCKAY PLACE
LOT 23
FINSBURY COURT
LILLINGTON, N.C.
HARNETT COUNTY UPPER LITTLE RIVER TOWNSHIP

DRAWN BY KDF

DATE 5/12/23

CHECKED BY MPG

SCALE 1" = 60'