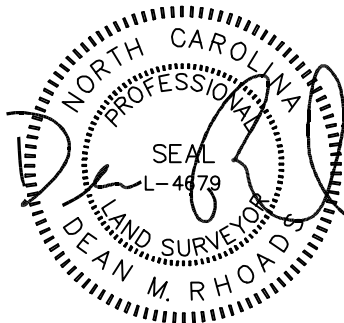


**VICINITY MAP**  
Not To Scale



IMPERVIOUS SURFACE AREA	
DESCRIPTION	AREA
HOUSE w/ PORCH	2,377 S.F.
CV PORCH/MISC	97 S.F.
DRIVEWAY & WALKS	1,069 S.F.
TOTAL (PROPOSED)=	3,543 S.F.
*TOTAL (ALLOWED)=	4,208 S.F.

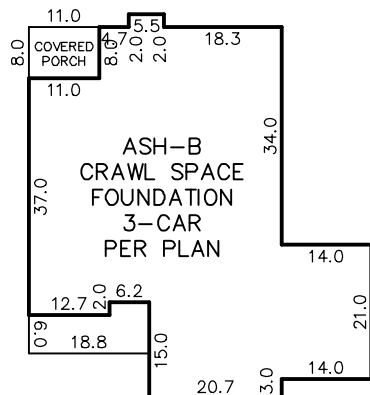
\*PB 2023 PG 241



PB 2023 PG 241

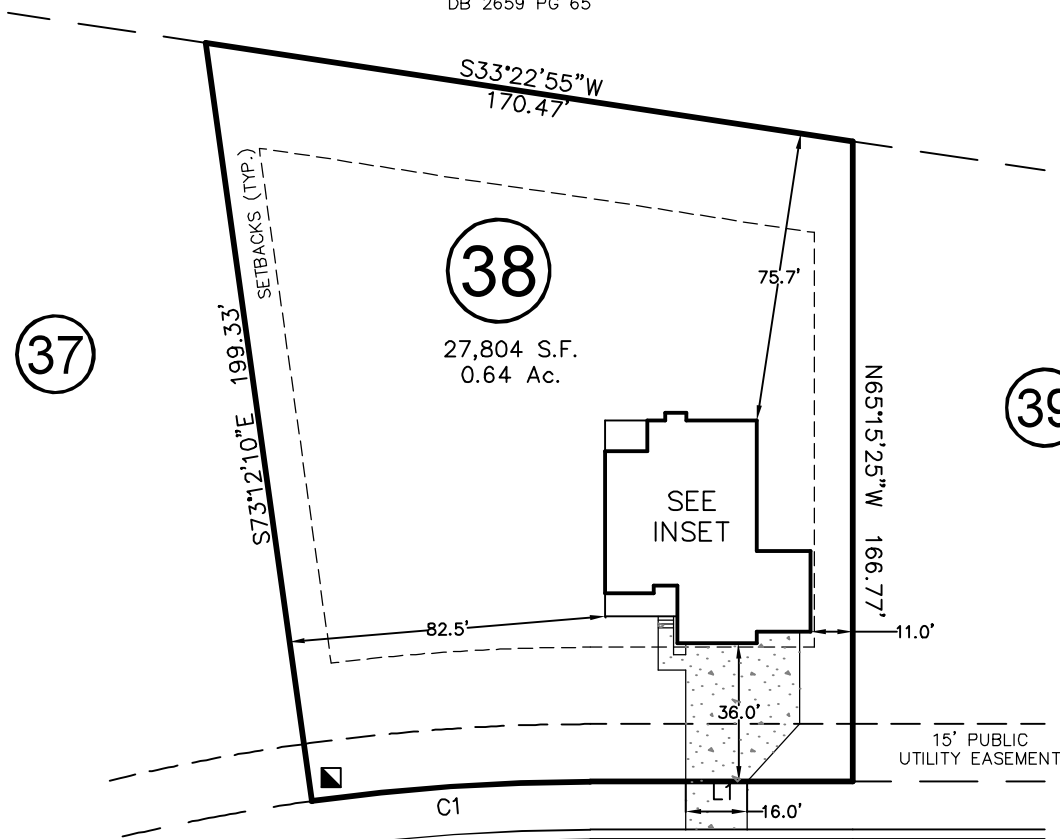
SETBACKS: (PB 2021 PG 240)

FRONT: 35' FROM R/W  
REAR: 25'  
SIDE: 10'  
CORNER LOT SIDE: 20'



**INSET**  
N.T.S.

N/F  
IRELL R. ARNOLD  
ANNETTE N. ARNOLD  
DB 2659 PG 65



**CASTLE POND WAY**  
50' PUBLIC R/W & UTILITY EASEMENT

REVISIONS		COMMENT
REV. #	DATE	REVISION BY
REV. 1	10/26/23	JWW
		ADDED FIREPLACE BUMP OUT

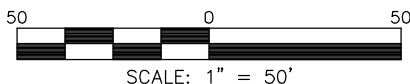
LINE	BEARING	DISTANCE
L1	N24°44'35"E	68.40'

CURVE	RADIUS	ARC LENGTH	CH LENGTH	CH BEARING
C1	525.00'	72.81'	72.75'	N20°46'15"E

THIS PROPERTY MAY BE SUBJECT TO ANY AND ALL APPLICABLE DEED RESTRICTIONS, EASEMENTS, RIGHT-OF-WAY, UTILITIES AND RESTRICTIVE COVENANTS WHICH MAY BE OF RECORD OR IMPLIED

THIS DRAWING DOES NOT REFLECT AS-BUILT INFORMATION

**PRELIMINARY PLAT**  
NOT FOR RECORDATION, CONVEYANCES, OR SALES.



SCALE: 1" = 50'

**RESIDENTIAL LAND SERVICES, PLLC.**

1917 Evans Road  
Cary, North Carolina 27513  
Phone (919) 378-9316  
Firm License # P-0873

**HOUSE LOCATION PLOT PLAN**

FOR

#143 CASTLE POND WAY

LOT 38, PRINCE PLACE, PHASE 2

Hectors Creek Township, Harnett County, North Carolina

PROPERTY OF: DAVIDSON HOMES

PLAT BOOK 2023 PAGE 240-241 DEED REFERENCE

DRAWN: DI

SURVEYED: N/A

CHECKED: DMR

DATE: SEPTEMBER 5, 2023