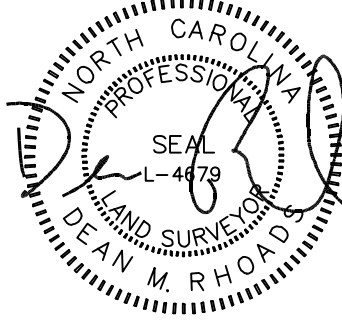


VICINITY MAP
Not To Scale



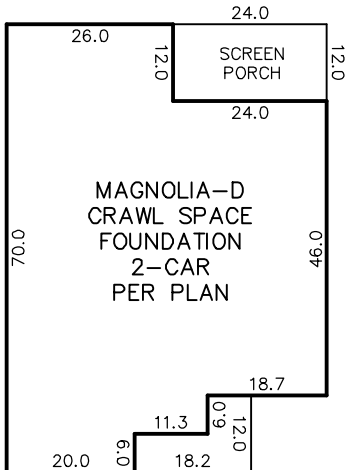
IMPERVIOUS SURFACE AREA	
DESCRIPTION	AREA
HOUSE w/ PORCH	3,071 S.F.
SC PORCH/MISC	297 S.F.
DRIVEWAY & WALKS	708 S.F.
TOTAL (PROPOSED)=	4,076 S.F.
*TOTAL (ALLOWED)=	4,208 S.F.

*PB 2023 PG 241



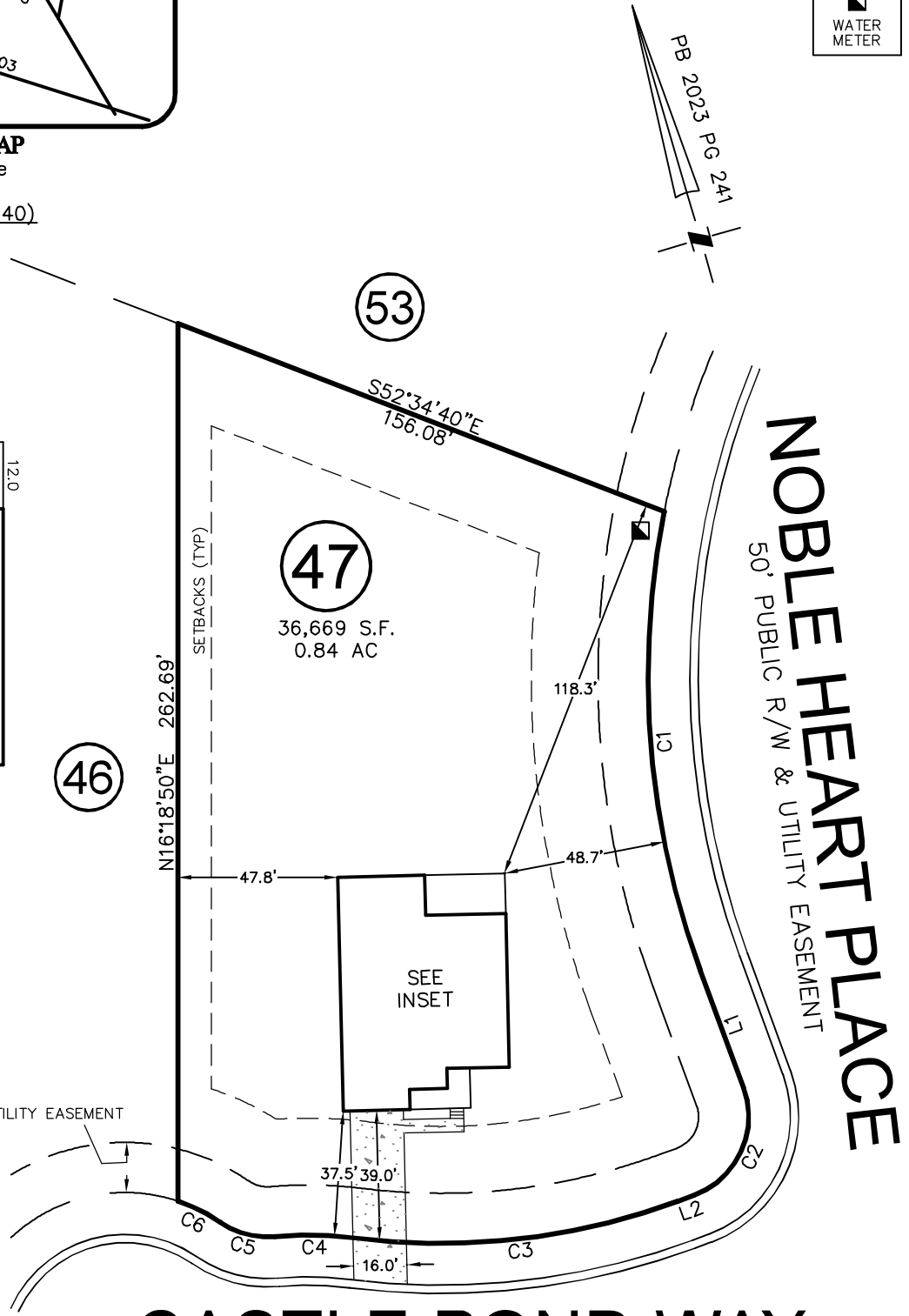
SETBACKS: (PB 2023 PG 240)

FRONT: 35' FROM R/W
REAR: 25'
SIDE: 10'
CORNER LOT SIDE: 20'



MAGNOLIA-D
CRAWL SPACE
FOUNDATION
2-CAR
PER PLAN

INSET
N.T.S.



46

53

47

36,669 S.F.
0.84 AC

NOBLE HEART PLACE
50' PUBLIC R/W & UTILITY EASEMENT

CASTLE POND WAY

50' PUBLIC R/W & UTILITY EASEMENT

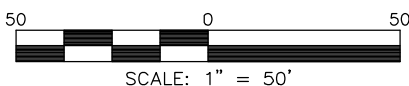
LINE	BEARING	DISTANCE
L1	S03°51'20"E	37.48'
L2	S86°05'00"W	5.14'

CURVE	RADIUS	ARC LENGTH	CH LENGTH	CH BEARING
C1	255.00'	139.62'	137.88'	S11°49'45"W
C2	25.00'	39.25'	35.34'	N41°06'50"E
C3	205.00'	97.96'	97.03'	S80°13'40"E
C4	115.00'	24.36'	24.31'	N72°36'15"W
C5	25.00'	17.26'	16.92'	S58°53'45"E
C6	50.00'	14.13'	14.09'	N47°08'59"W

THIS PROPERTY MAY BE SUBJECT TO ANY AND ALL APPLICABLE DEED RESTRICTIONS, EASEMENTS, RIGHT-OF-WAY, UTILITIES AND RESTRICTIVE COVENANTS WHICH MAY BE OF RECORD OR IMPLIED

THIS DRAWING DOES NOT REFLECT AS-BUILT INFORMATION

PRELIMINARY PLAT
NOT FOR RECORDATION, CONVEYANCES, OR SALES.



SCALE: 1" = 50'

**RESIDENTIAL
LAND SERVICES, PLLC.**

1917 Evans Road
Cary, North Carolina 27513
Phone (919) 378-9316
Firm License # P-0873

HOUSE LOCATION PLOT PLAN

FOR
CASTLE POND WAY

LOT 47, PRINCE PLACE, PHASE 2

Hectors Creek Township, Harnett County, North Carolina

PROPERTY OF: DAVIDSON HOMES

PLAT BOOK 2023 PAGE 240-241 DEED REFERENCE _____

DRAWN: JWW

SURVEYED: N/A

CHECKED: DMR

DATE: AUGUST 22, 2023