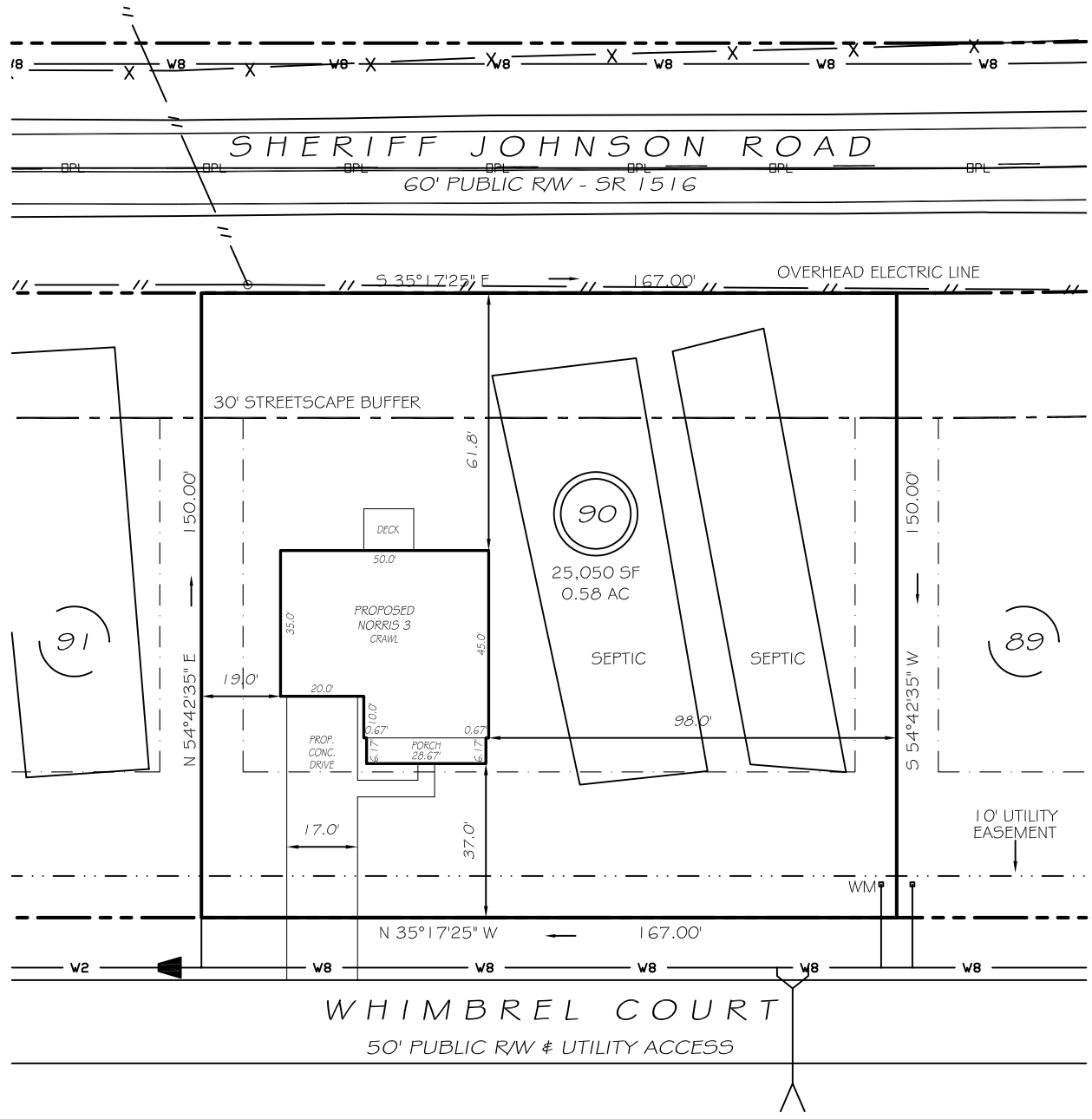
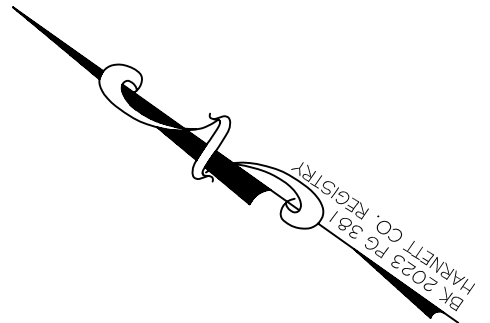


I, MICHAEL P. GRIFFIN, certify that under my direction and supervision this map was drawn from an actual field survey; that the error of closure of the survey as calculated by coordinates is 1: 10,000+; that the area shown hereon was calculated by coordinates.

Witness my hand and seal this day of MONTH 2023.

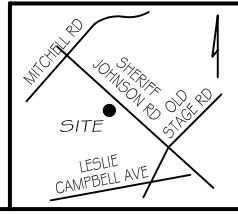


ZONING: RA-30  
 SETBACKS  
 FRONT 35'  
 REAR 25'  
 SIDE 10'  
 CORNER SIDE 20'

REVISION: MOVE, ADD SEPTIC 8/17/23

**LEGEND**

EIP	EXISTING IRON PIPE	FES	FLARED END SECTION
IPS	IRON PIPE SET	WM	WATER METER
RW	RIGHT OF WAY	CO	CLEAN OUT
N/F	NOW OR FORMERLY	FH	FIRE HYDRANT
EIS	EXISTING IRON STAKE	CB	CATCH BASIN



**PRELIMINARY**  
 NOT FOR RECORDATION,  
 SALES OR CONVEYANCE

**GLS** GRIFFIN LAND SURVEYING, INC.  
 P. O. BOX 148  
 FUQUAY-VARINA, NC 27526  
 (919) - 567 - 1963

DRAWN BY <b>KDF</b>	DATE <b>8/17/23</b>
CHECKED BY <b>MPG</b>	SCALE <b>1" = 40'</b>

**PLOT PLAN**  
 FOR  
**DRB HOMES**  
 BLAKE POND SUBDIVISION  
 LOT 90  
 60 WHIMBREL COURT  
 LILLINGTON, N.C.  
 HARNETT COUNTY NEILL'S CREEK & GROVE TOWNSHIP