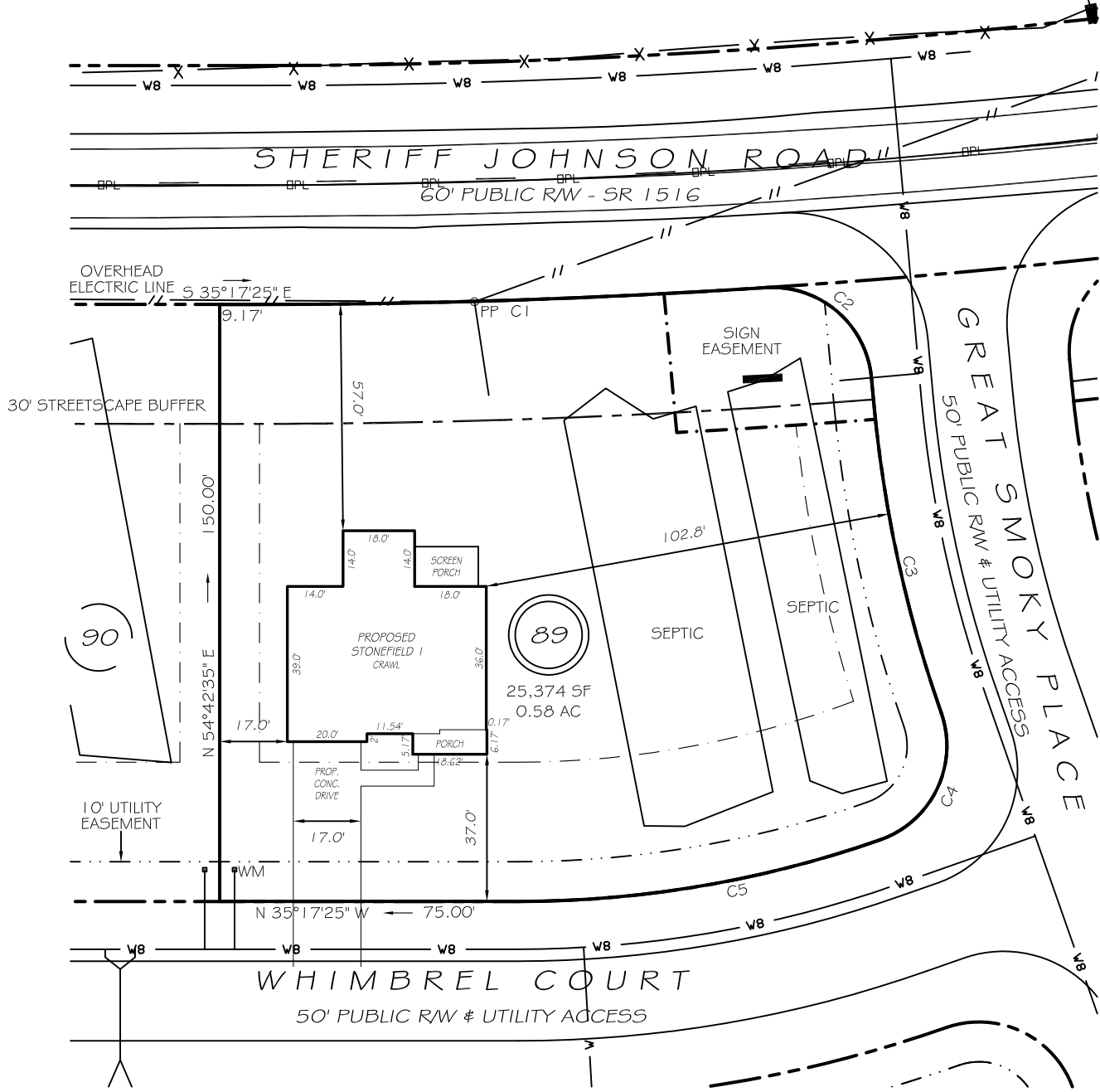


I, MICHAEL P. GRIFFIN, certify that under my direction and supervision this map was drawn from an actual field survey; that the error of closure of the survey as calculated by coordinates is 1: 10,000+; that the area shown hereon was calculated by coordinates.

Witness my hand and seal this day of MONTH 2023.

BK 2023 Fg 381
HARNETT CO. REGISTRY



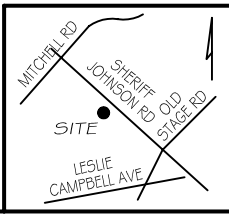
REVISION: MOVE, ADD SEPTIC 8/17/23
 C1 R=1940.00' L=128.19' N37°10'59"W 128.16'
 C2 R=25.00' L=38.63' N05°11'42"E 34.90'
 C3 R=325.00' L=79.92' S42°25'17"W 79.72'
 C4 R=25.00' L=39.27' N80°22'37"E 35.36'
 C5 R=275.00' L=92.79' N44°57'24"W 92.35'

ZONING: RA-30
 SETBACKS
 FRONT 35'
 REAR 25'
 SIDE 10'
 CORNER SIDE 20'

P R E L I M I N A R Y
 NOT FOR RECORDATION,
 SALES OR CONVEYANCE

LEGEND

EIP	EXISTING IRON PIPE	PP	POWER POLE
IPS	IRON PIPE SET	WM	WATER METER
RAW	RIGHT OF WAY	CO	CLEAN OUT
N/F	NOW OR FORMERLY	FH	FIRE HYDRANT
EIS	EXISTING IRON STAKE	CB	CATCH BASIN



GLS GRIFFIN LAND SURVEYING, INC.
 P. O. BOX 148
 FUQUAY-VARINA, NC 27526
 (919) - 567 - 1963

PLOT PLAN FOR
DRB HOMES
 BLAKE POND SUBDIVISION
 LOT 89
 WHIMBREL COURT
 LILLINGTON, N.C.
 HARNETT COUNTY NEILL'S CREEK & GROVE TOWNSHIP

DRAWN BY KDF	DATE 8/17/23
CHECKED BY MPG	SCALE 1" = 40'