

THIS LAYOUT IS TO BE USED AS A TRUSS PLACEMENT GUIDE ONLY.
PLEASE REFER TO BUILDING PLANS FOR BUILDING CONSTRUCTION AND DETAILS,
SUCH AS PLUMBING OR DUCT DROPS.

PROPOSED DESIGN-
NOT FOR
CONSTRUCTION

Job #

Q-2302242

Palmquist Residence V2
7608 Overhills Rd
Spring Lake NC 28390

Unit / Lot:

- Notes:
- Exterior dimensions shown are assumed to be:
 - Out-to-out of stud
 - Out-to-out of sheathing
 - Out-to-out of Cladding
 - Adjust truss locations as needed for plumbing and mechanical clearance. Unless otherwise noted, trusses may be shifted as long as O.C. spacing shown is not exceeded.
 - Do not cut, drill, or otherwise damage any part of any truss without prior approval from Peak Truss.
 - Do not approve drawings if any information herein is unclear. Once ordered trusses will be fabricated as approved.
 - Please contact Peak Truss Builders with any questions. We are available to help any way we can. We can be reached at 919-545-5555 or sales@peaktruss.com

Roof Truss Loading specified by building designer on Residential jobs

Top Chord Live Load 20.0 lb/ft²
Top Chord Dead Load 10.0 lb/ft²
Bottom Chord Live Load 0.0 lb/ft²
Bottom Chord Dead Load 10.0 lb/ft²

Trusses are designed for additional storage load wherever a 42"x24" box will fit between the webs.

Floor Truss Loading specified by building designer on Residential jobs

Top Chord Live Load 40.0 lb/ft²
Top Chord Dead Load 10.0 lb/ft²
Bottom Chord Live Load 0.0 lb/ft²
Bottom Chord Dead Load 5.0 lb/ft²

Floor Live Load deflection limit L/480
Roof Live Load deflection limit L/240

This layout has been designed using the IRC2015 building code.

Model created using a wind speed of 130 mph specified for Cumberland County.

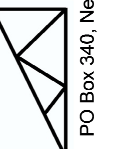
Layout Creation Date:

11/14/2023

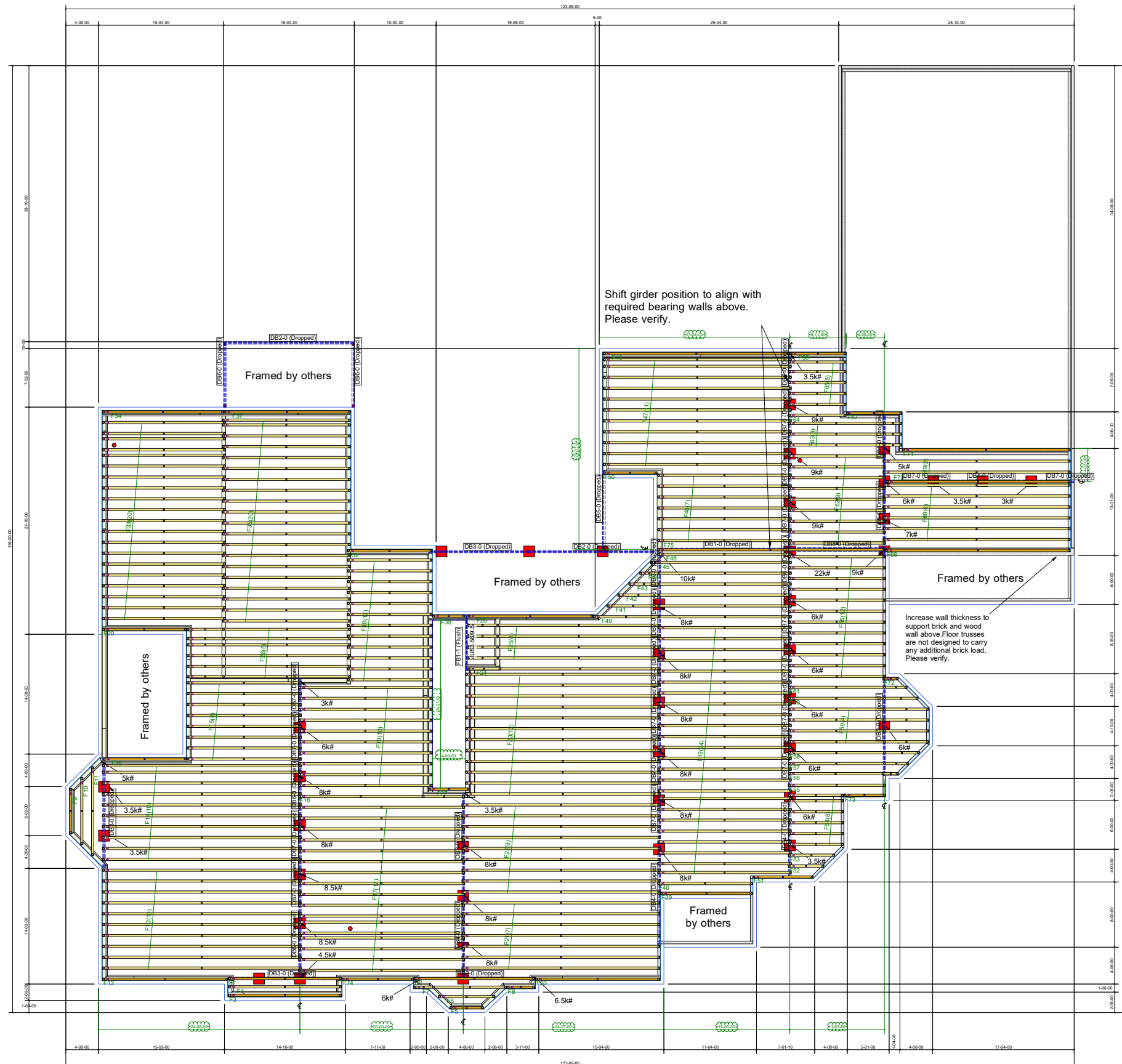
Sales: Justin Bryant - Designers: Aron Meeks

JE Womble and Sons
805 W Front St
Lillington, NC
27546

Peak Truss
Builders, LLC



PO Box 340, New Hill, NC 27562



- △ - This symbol denotes left end of truss as shown on truss drawings
- - Approximate location of toilet drop. Builder please confirm.

Truss connections by others:

- Nailed
- Ledger

Floor Trusses

Overhang: NA
Depth: 24"
Spacing: 16" OC

Wall Types

- Load Bearing
- Non Load Bearing

Truss Connector Total List			
Manuf	Product	Qty	
Simpson	IUS3.56/9.5	4	

Products				
PlotID	Length	Product	Plies	Net Qty
DB1-0 (Dropped)	18-00-00	1-3/4X9-1/4 LP-LVL 2900Fb-2.0E	2	2
DB2-0 (Dropped)	16-00-00	1-3/4X9-1/4 LP-LVL 2900Fb-2.0E	2	6
DB3-0 (Dropped)	14-00-00	1-3/4X9-1/4 LP-LVL 2900Fb-2.0E	2	10
DB4-0 (Dropped)	12-00-00	1-3/4X9-1/4 LP-LVL 2900Fb-2.0E	2	8
DB5-0 (Dropped)	10-00-00	1-3/4X9-1/4 LP-LVL 2900Fb-2.0E	2	6
DB6-0 (Dropped)	8-00-00	1-3/4X9-1/4 LP-LVL 2900Fb-2.0E	2	14
DB7-0 (Dropped)	6-00-00	1-3/4X9-1/4 LP-LVL 2900Fb-2.0E	2	36
DB8-0 (Dropped)	12-00-00	1-3/4X11-7/8 LP-LVL 2900Fb-2.0E	3	3
FB1-1 (Flush)	8-00-00	1-3/4X24 LP-LVL 2900Fb-2.0E	2	2

THIS LAYOUT IS TO BE USED AS A TRUSS PLACEMENT GUIDE ONLY.
PLEASE REFER TO BUILDING PLANS FOR BUILDING CONSTRUCTION AND DETAILS,
SUCH AS PLUMBING OR DUCT DROPS.

PROPOSED DESIGN-
NOT FOR
CONSTRUCTION

Job #

Q-2302242

Palmquist Residence V2
7608 Overhills Rd
Spring Lake NC 28390

UNIT / Lot:

Layout Creation Date:

11/14/2023

Sales: Justin Bryant - Designs: Aron Meeks

JE Womble and Sons
805 W Front St
Lillington, NC
27546

Peak Truss
Builders, LLC

PO Box 340, New Hill, NC 27562

- Notes:
- Exterior dimensions shown are assumed to be:
 - Out-to-out of stud
 - Out-to-out of sheathing
 - Out-to-out of Cladding
 - Adjust truss locations as needed for plumbing and mechanical clearance. Unless otherwise noted, trusses may be shifted as long as O.C. spacing shown is not exceeded.
 - Do not cut, drill, or otherwise damage any part of any truss without prior approval from Peak Truss.
 - Do not approve drawings if any information herein is unclear. Once ordered trusses will be fabricated as approved.
 - Please contact Peak Truss Builders with any questions. We are available to help any way we can. We can be reached at 919-545-5555 or sales@peaktruss.com

Roof Truss Loading specified by building designer on Residential jobs

Top Chord Live Load 20.0 lb/ft²
Top Chord Dead Load 10.0 lb/ft²
Bottom Chord Live Load 0.0 lb/ft²
Bottom Chord Dead Load 10.0 lb/ft²

Trusses are designed for additional storage load wherever a 42"x24" box will fit between the webs.

Floor Truss Loading specified by building designer on Residential jobs

Top Chord Live Load 40.0 lb/ft²
Top Chord Dead Load 10.0 lb/ft²
Bottom Chord Live Load 0.0 lb/ft²
Bottom Chord Dead Load 5.0 lb/ft²

Floor Live Load deflection limit L/480
Roof Live Load deflection limit L/240

This layout has been designed using the IRC2015 building code.

Model created using a wind speed of 130 mph specified for Cumberland County.

- △ - This symbol denotes left end of truss as shown on truss drawings
- - Approximate location of toilet drop. Builder please confirm.

Truss connections by others:

- Nailed
- Ledger

Roof Trusses

Overhang: 16"
Depth: NA
Spacing: 24" OC

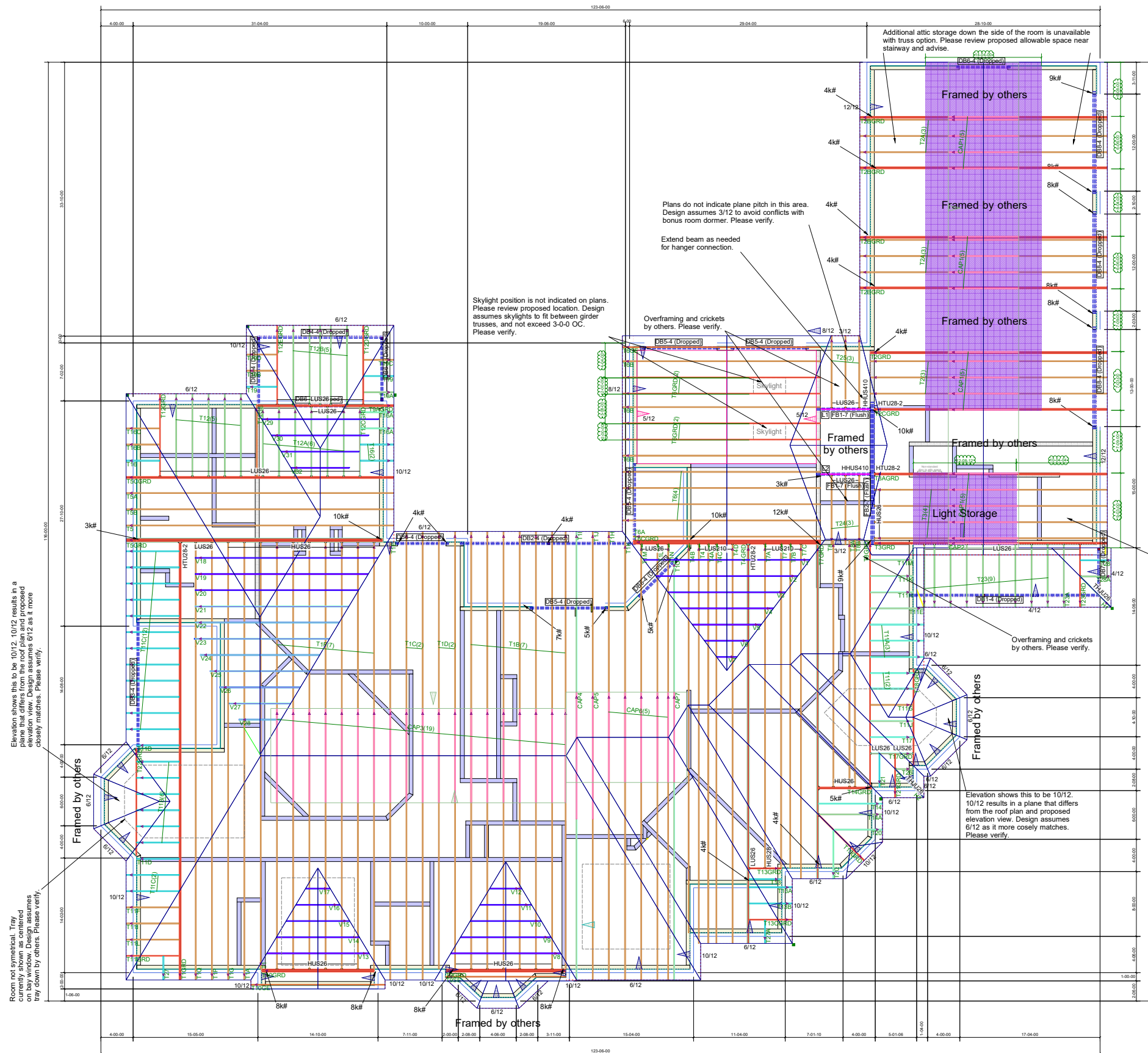
Wall Types

- Load Bearing
- Non Load Bearing

Connector Summary		
Qty	Manuf	Product
2	Simpson	HHUS410

Truss Connector Total List		
Manuf	Product	Qty
Simpson	HTU28-2	5
Simpson	HUS26	32
Simpson	HUS28	1
Simpson	LUS210	8
Simpson	LUS26	49
Simpson	THJU26	3

PlotID	Length	Products	Piles		Net Qty
			Piles	Net Qty	
DB1-4 (Dropped)	24-00-00	1-3/4X9-1/4 LP-LVL 2900Fb-2.0E	2	2	2
DB2-4 (Dropped)	22-00-00	1-3/4X9-1/4 LP-LVL 2900Fb-2.0E	2	2	2
DB3-4 (Dropped)	18-00-00	1-3/4X9-1/4 LP-LVL 2900Fb-2.0E	2	2	2
DB4-4 (Dropped)	16-00-00	1-3/4X9-1/4 LP-LVL 2900Fb-2.0E	2	2	2
DB5-4 (Dropped)	10-00-00	1-3/4X9-1/4 LP-LVL 2900Fb-2.0E	2	2	10
DB6-4 (Dropped)	8-00-00	1-3/4X9-1/4 LP-LVL 2900Fb-2.0E	2	2	10
FB1-7 (Flush)	8-00-00	1-3/4X9-1/4 LP-LVL 2900Fb-2.0E	2	4	2
DB7-4 (Dropped)	6-00-00	1-3/4X9-1/4 LP-LVL 2900Fb-2.0E	2	2	2
DB8-4 (Dropped)	14-00-00	1-3/4X14 LP-LVL 2900Fb-2.0E	3	9	9
FB2-7 (Flush)	18-00-00	1-3/4X18 LP-LVL 2900Fb-2.0E	3	3	3



Elevation shows this to be 10/12. 10/12 results in a plane that differs from the roof plan and proposed elevation view. Design assumes 6/12 as it more closely matches. Please verify.

Room not symmetrical. Truss currently shown as centered on bay window. Design assumes tray down by others. Please verify.

Skylight position is not indicated on plans. Please review proposed location. Design assumes skylights to fit between girder trusses, and not exceed 3-0-0 OC. Please verify.

Plans do not indicate plane pitch in this area. Design assumes 3/12 to avoid conflicts with bonus room dormer. Please verify. Extend beam as needed for hanger connection.

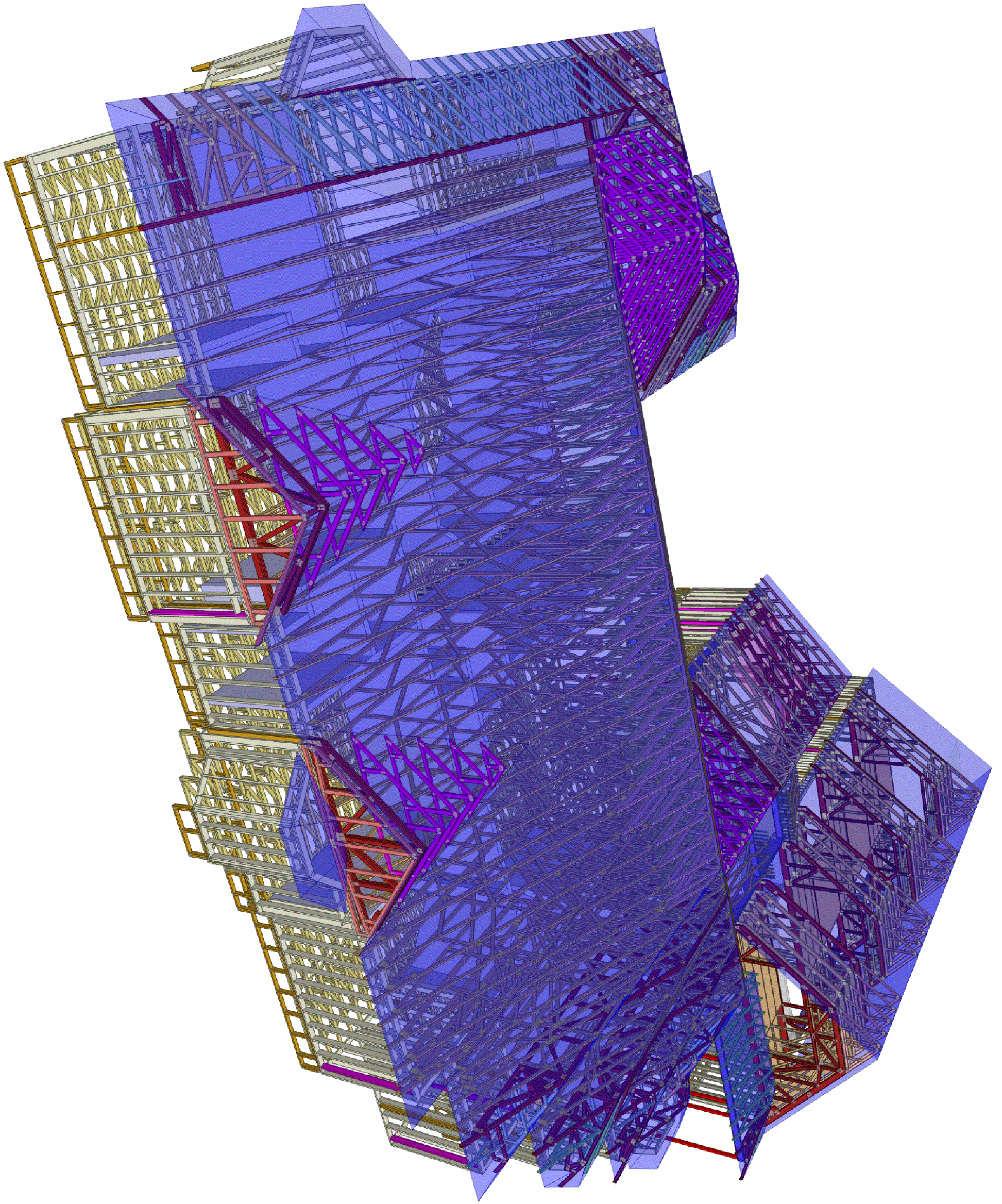
Overframing and crickets by others. Please verify.

Elevation shows this to be 10/12. 10/12 results in a plane that differs from the roof plan and proposed elevation view. Design assumes 6/12 as it more closely matches. Please verify.

Four' area on bonus room level unavailable with truss option. Please verify.

Additional attic storage down the side of the room is unavailable with truss option. Please review proposed allowable space near stairway and advise.

* Roof plan and elevations are missing some pitches and/or planes. Please review proposed roof design and advise.
* Design assumes all trays to be 'tray down by others'. Please verify.
* Design assumes all bay window roof areas to be framed by others. Please verify.



**Peak Truss
Builders, LLC**

PO Box 340, New Hill, NC 27562

JE Womble and Sons
805 W Front St
Lillington, NC
27546

Layout Creation Date:

11/14/2023

Sales: Justin Bryant - Designer: Aron Meeks

Palmquist Residence V2
7608 Overhills Rd
Spring Lake NC 28390

Unit/Lot:

Job #

Q-2302242