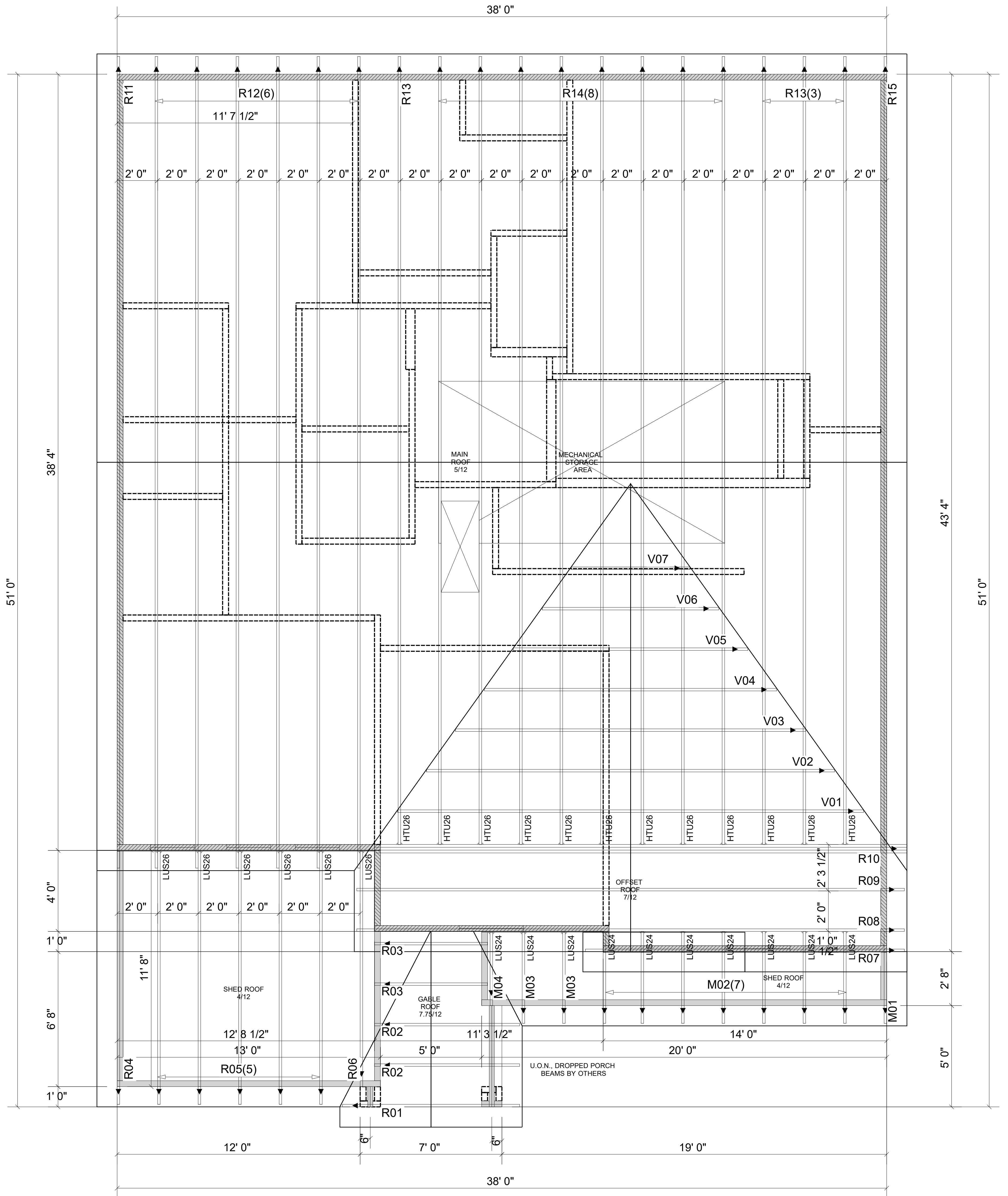


WARNING! Long span trusses, 60' or greater in length, require extreme care and experience for proper and safe handling and installation. For general handling and installation guidance, see the "Guide to Good Practice for Handling, Installing, Restraining & Bracing of Metal Plate Connected Wood Trusses" ("BCS"), JOINTLY PRODUCED BY SBCA and TPI. For project specific guidance, consult with a registered design professional. ATLANTIC assumes no responsibility for the handling, installation or bracing of trusses.



Hatch Legend	
	9-1-8 F.F.
	8-1-8 S.F.

Truss Connector Total List		
Manuf	Product	Qty
Simpson	HTU26	12
Simpson	LUS24	10
Simpson	LUS26	6

▲ = LEFT END OF TRUSS

NOT FOR CONSTRUCTION



Moncks Corner/Easley, SC (800) 475-3999
Sparta, NC (336) 372-2226

REVISIONS:

Client: **MATTAMY HOMES-RALEIGH**
Job: **LOT 44 PROVIDENCE CREEK**
Plan Information:
SEQUOIA-CL

NOT TO SCALE

Date: 08/02/23

Drawn By: DHP

Job #: Sales Rep: KYLE GIBSON
23-5656-R01 Phone:

ROOF