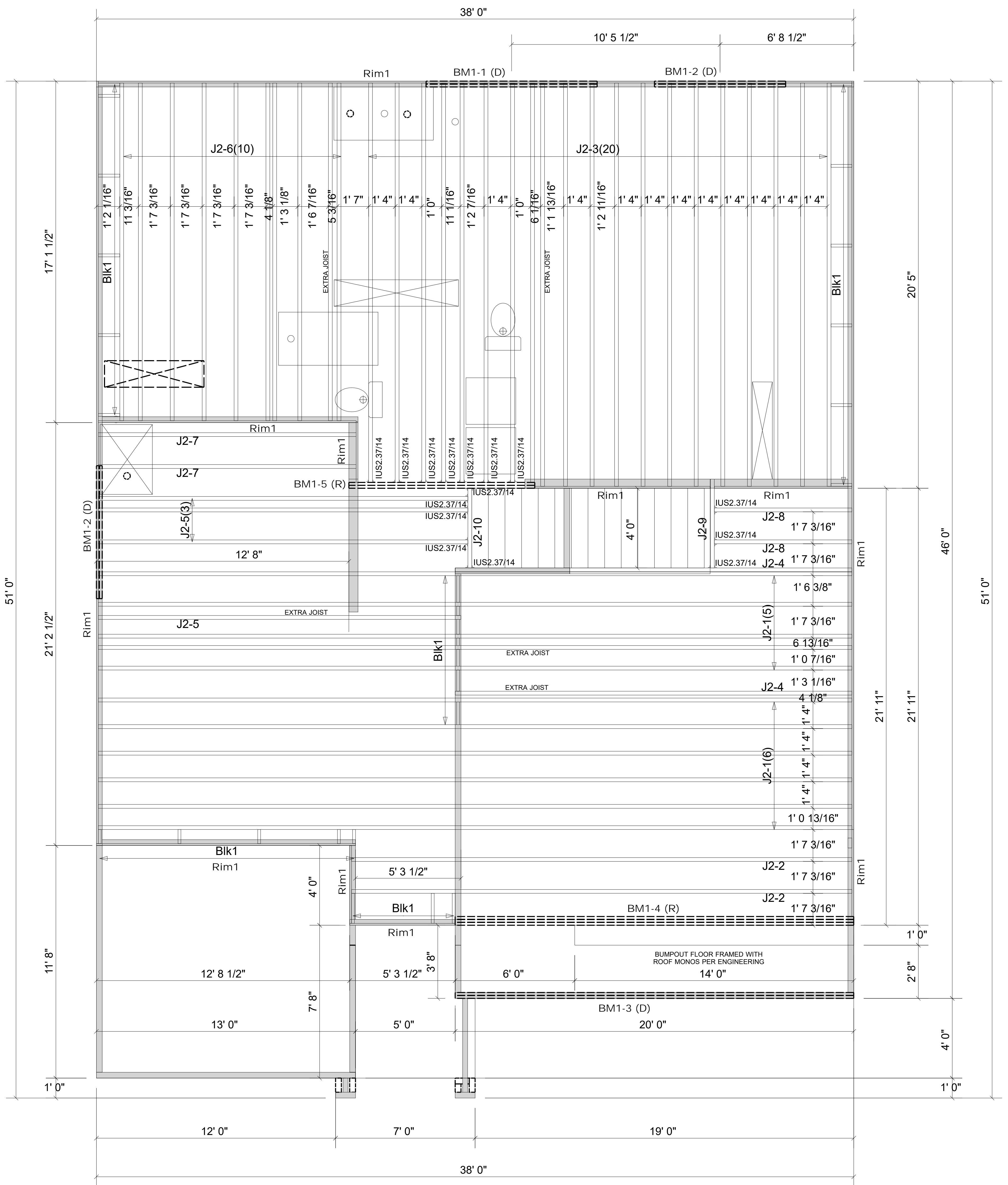


WARNING! Long span trusses, 60' or greater in length, require extreme care and experience for proper and safe handling and installation. For general handling and installation guidance, see the "Guide to Good Practice for Handling, Installing, Restraining & Bracing of Metal Plate Connected Wood Trusses" ("BCSI"), JOINTLY PRODUCED BY SBCA and TPI. For project specific guidance, consult with a registered design professional. ATLANTIC assumes no responsibility for the handling, installation or bracing of trusses.



Products					
PlotID	Length	Product	Plies	Net Qty	
J2-1	38-00-00	14" BCI@ 6000s-1.8	1	11	
J2-2	26-00-00	14" BCI@ 6000s-1.8	1	2	
J2-3	21-00-00	14" BCI@ 6000s-1.8	1	20	
J2-4	20-00-00	14" BCI@ 6000s-1.8	1	2	
J2-5	19-00-00	14" BCI@ 6000s-1.8	1	4	
J2-6	17-00-00	14" BCI@ 6000s-1.8	1	10	
J2-7	13-00-00	14" BCI@ 6000s-1.8	1	2	
J2-8	7-00-00	14" BCI@ 6000s-1.8	1	2	
J2-9	5-00-00	14" BCI@ 6000s-1.8	1	1	
J2-10	4-00-00	14" BCI@ 6000s-1.8	1	1	
BM1-1 (D)	10-00-00	1-3/4" x 9-1/2" VERSA-LAM® 2.0 3100 SP	2	2	
BM1-2 (D)	8-00-00	1-3/4" x 9-1/2" VERSA-LAM® 2.0 3100 SP	2	4	
BM1-3 (D)	20-00-00	1-3/4" x 11-7/8" VERSA-LAM® 2.0 3100 SP	2	2	
BM1-4 (R)	20-00-00	1-3/4" x 14" VERSA-LAM® 2.0 3100 SP	3	3	
BM1-5 (R)	10-00-00	1-3/4" x 14" VERSA-LAM® 2.0 3100 SP	2	2	
Rim1	12-00-00	1-1/8" x 14" BC RIM BOARD OSB	1	15	
Blk1	2-00-00	14" BLOCKING	1	14	

Connector Summary			
Qty	Manuf	Product	Flange
15	Simpson	IUS2.37/14	None

▲ = LEFT END OF TRUSS

NOT FOR CONSTRUCTION



Moncks Corner/Easley, SC (800) 475-3999
Sparta, NC (336) 372-2226

REVISIONS:

Client: **MATTAMY HOMES-RALEIGH**
Job: **LOT 44 PROVIDENCE CREEK**
Plan Information:
SEQUOIA-CL

NOT TO SCALE

Date: 08/02/23

Drawn By: DHP

Job #: Sales Rep: KYLE GIBSON
23-5656-J02 Phone:

SLS101F-1