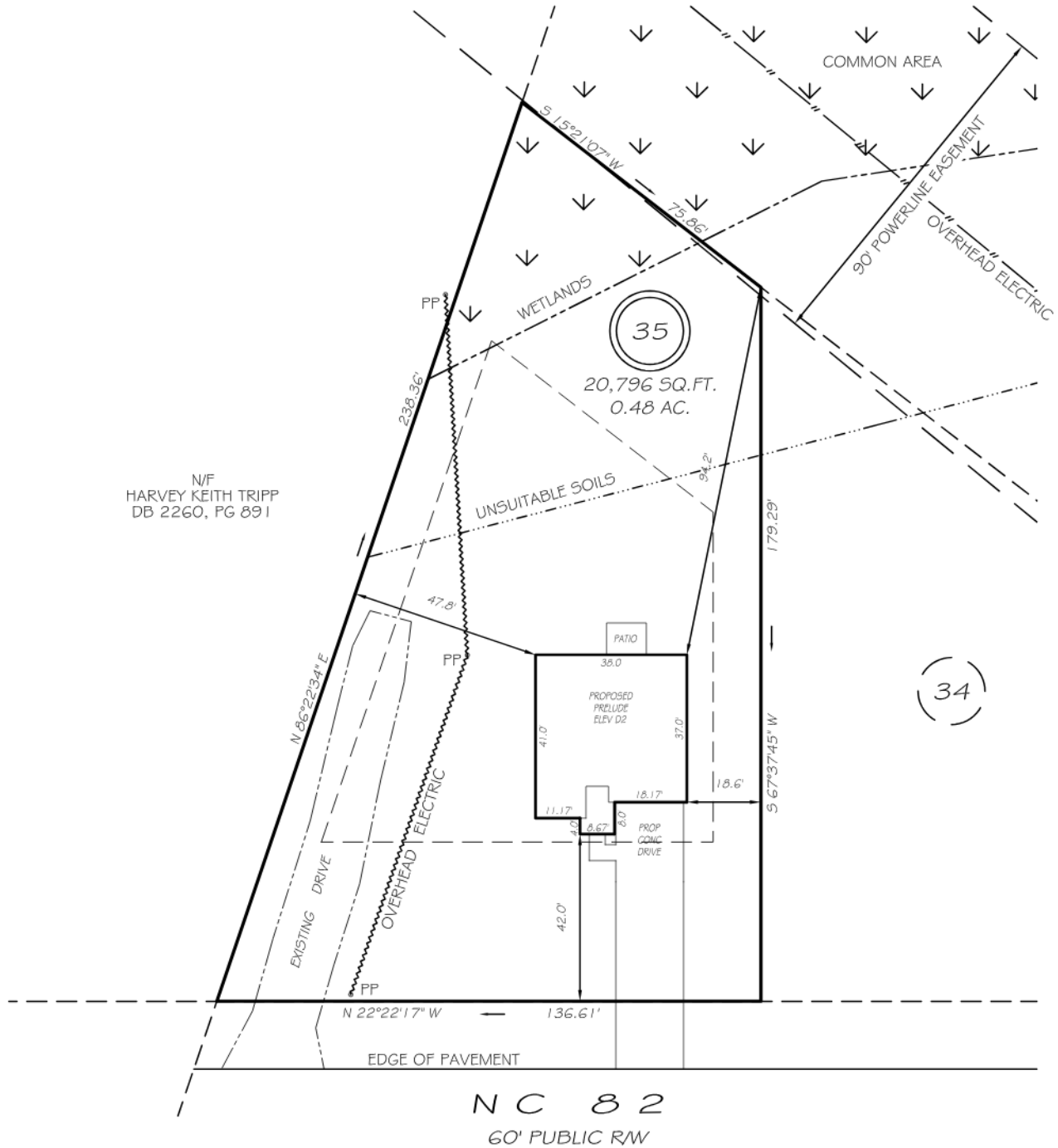


I, MICHAEL P. GRIFFIN, certify that under my direction and supervision this map was drawn from an actual field survey; that the error of closure of the survey as calculated by coordinates is 1: 10,000+; and that the area shown hereon was calculated by coordinates.

Witness my hand and seal this day of MONTH 2023.

BK 2022 PAGE 226-227  
HARNETT CO. REGISTRY



N/F  
HARVEY KEITH TRIPP  
DB 2260, PG 891

**SETBACKS**

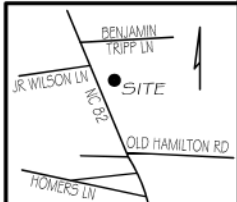
FRONT	40'
REAR	40'
SIDE	12'

REVISION: MOVE RIGHT 8/8/23

**P R E L I M I N A R Y**  
NOT FOR RECORDATION,  
SALES OR CONVEYANCE

**LEGEND**

EIP	EXISTING IRON PIPE	FES	FLARED END SECTION
IPS	IRON PIPE SET	WM	WATER METER
RAW	RIGHT OF WAY	CO	CLEAN OUT
N/F	NOW OR FORMERLY	PP	POWER POLE
EIS	EXISTING IRON STAKE	CB	CATCH BASIN



**GLS** GRIFFIN LAND SURVEYING, INC.  
P. O. BOX 148  
FUQUAY-VARINA, NC 27526  
(919) - 567 - 1963

**PLOT PLAN**  
FOR  
**DREAM FINDERS HOMES, LLC**  
SCHABERT CROSSING SUBDIVISION  
**LOT 35**  
NC 82  
DUNN, N.C.  
HARNETT COUNTY DUKE TOWNSHIP

DRAWN BY <b>KDF</b>	DATE <b>7/24/23</b>
CHECKED BY <b>MPG</b>	SCALE <b>1" = 40'</b>