



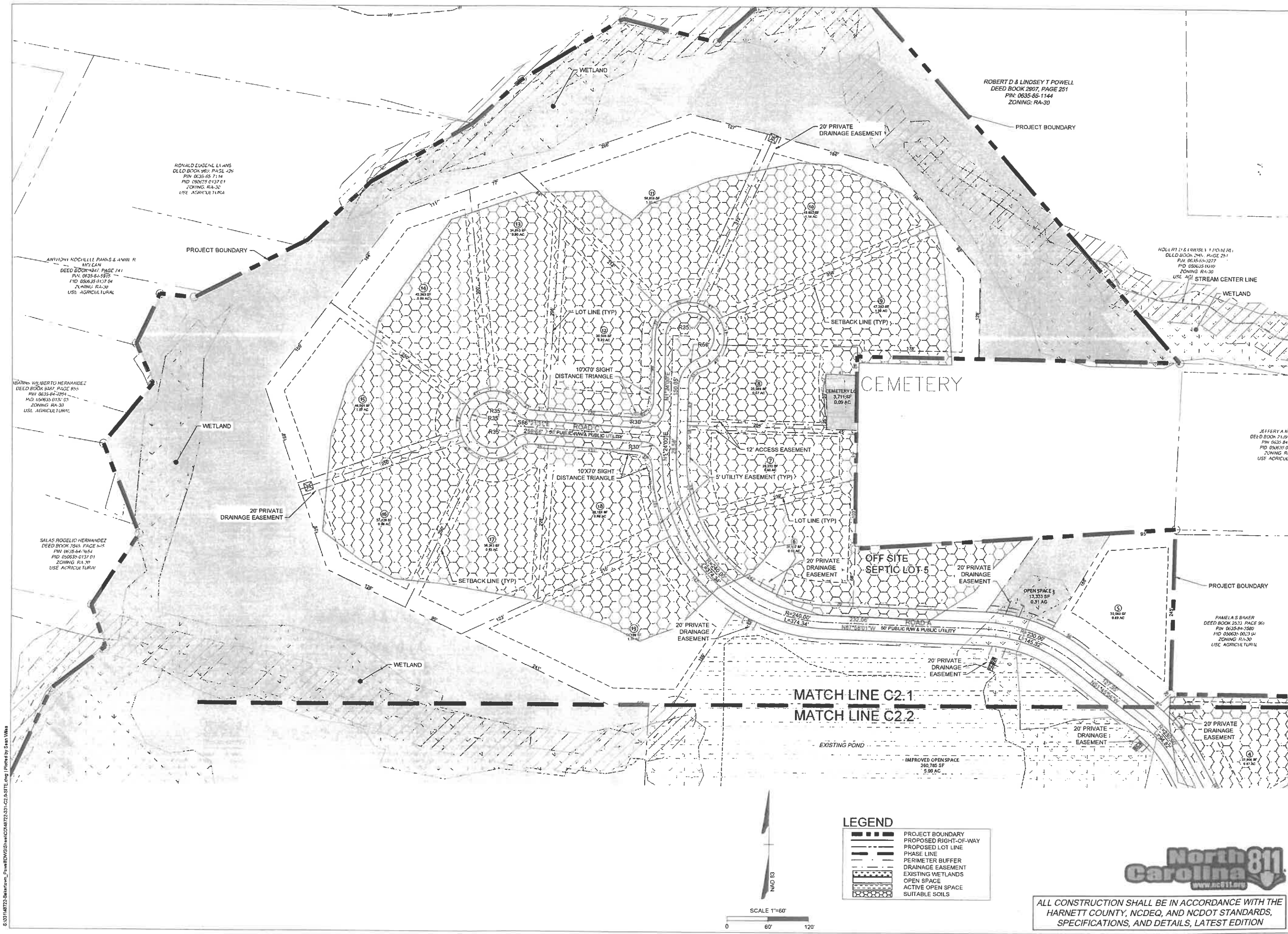
THIS DRAWING PREPARED AT THE
RALEIGH OFFICE
5410 Trinity Road, Suite 112 | Raleigh, NC 27607
TEL 919.866.4951 FAX 919.833.8124 www.timmons.com

YOUR VISION ACHIEVED THROUGH OURS.

DATE
06/02/2022
DRAWN BY
331
DESIGNED BY
331
CHECKED BY
K.ROBERTS
SCALE
1" = 60'

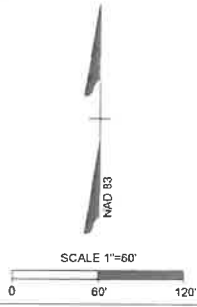
TIMMONS GROUP
NORTH CAROLINA LICENSE NO. C-1652
WOODBRIDGE SOUTH
HARNETT COUNTY - NORTH CAROLINA

DETAILED SITE PLAN - SHEET 1 OF 2
JOB NO.
48722
SHEET NO.
C2.1



LEGEND

	PROJECT BOUNDARY
	PROPOSED RIGHT-OF-WAY
	PROPOSED LOT LINE
	PHASE LINE
	PERIMETER BUFFER
	DRAINAGE EASEMENT
	EXISTING WETLANDS
	OPEN SPACE
	ACTIVE OPEN SPACE
	SUITABLE SOILS



ALL CONSTRUCTION SHALL BE IN ACCORDANCE WITH THE
HARNETT COUNTY, NCDEQ, AND NCDOT STANDARDS,
SPECIFICATIONS, AND DETAILS, LATEST EDITION

© 2022 Timmons Group, Inc. All rights reserved. This drawing is the property of Timmons Group, Inc. and may not be reproduced in whole or in part without the written consent of Timmons Group, Inc.