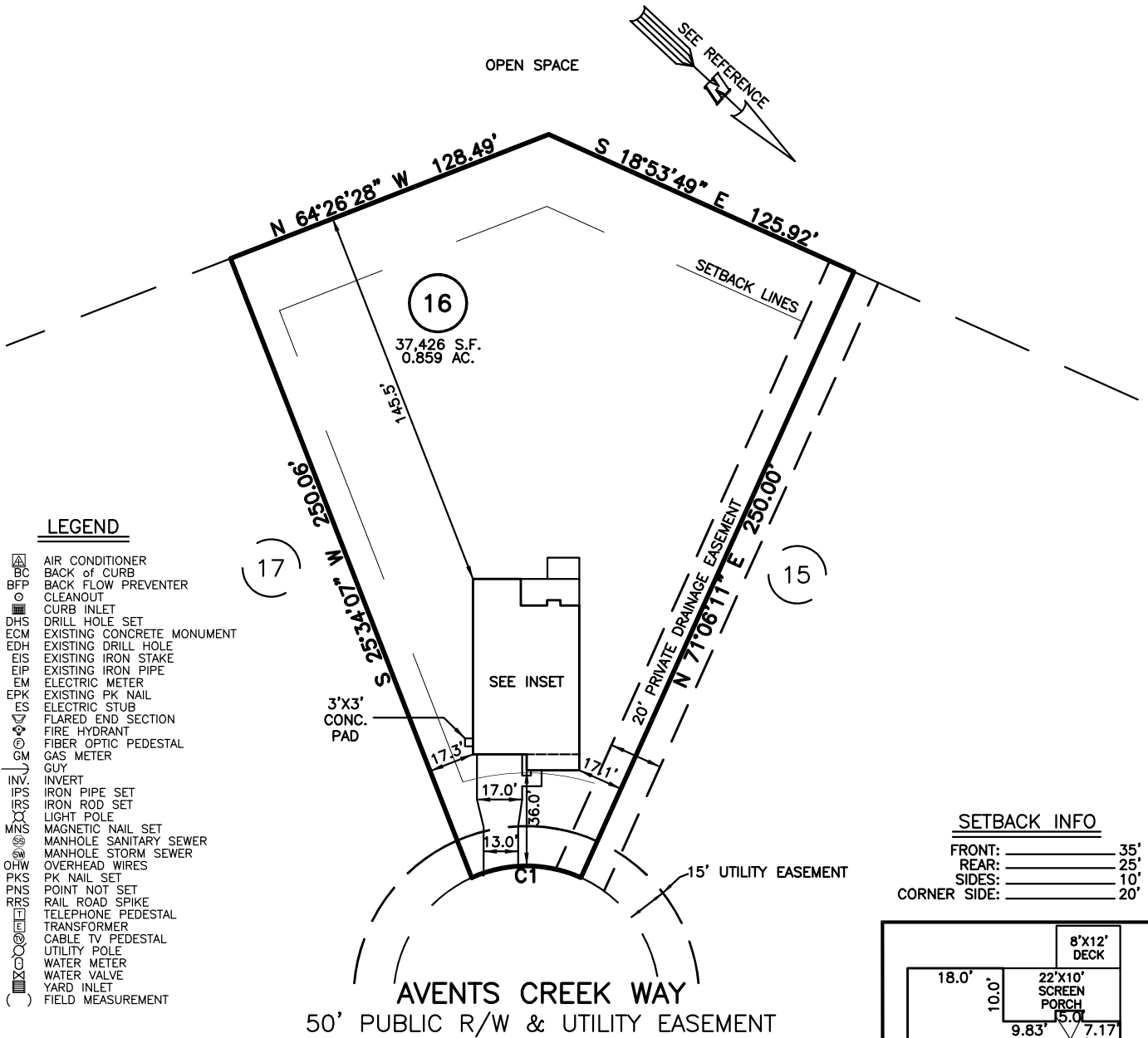


PLOT PLAN FOR
NEW HOME INC., LLC
 57 AVENTS CREEK WAY
 LOT 16, WOODBRIDGE SOUTH
 BUCKHORN TOWNSHIP, HARNETT COUNTY, NORTH CAROLINA

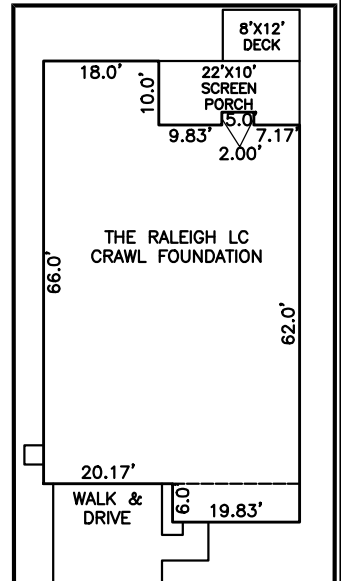


LEGEND

- ▲ AIR CONDITIONER
- BC BACK OF CURB
- BFP BACK FLOW PREVENTER
- CLEANOUT
- CURB INLET
- DHS DRILL HOLE SET
- ECM EXISTING CONCRETE MONUMENT
- EDH EXISTING DRILL HOLE
- EIS EXISTING IRON STAKE
- EIP EXISTING IRON PIPE
- EM ELECTRIC METER
- EPK EXISTING PK NAIL
- ES ELECTRIC STUB
- FLARED END SECTION
- FIRE HYDRANT
- FIBER OPTIC PEDESTAL
- GAS METER
- GM GUY
- INV. INVERT
- IPS IRON PIPE SET
- IRS IRON ROD SET
- LIGHT POLE
- MNS MAGNETIC NAIL SET
- MANHOLE SANITARY SEWER
- MANHOLE STORM SEWER
- OHV OVERHEAD WIRES
- PKS PK NAIL SET
- PNS POINT NOT SET
- RRS RAIL ROAD SPIKE
- TELEPHONE PEDESTAL
- TRANSFORMER
- CABLE TV PEDESTAL
- UTILITY POLE
- WATER METER
- WATER VALVE
- YARD INLET
- () FIELD MEASUREMENT

SETBACK INFO

FRONT:	35'
REAR:	25'
SIDES:	10'
CORNER SIDE:	20'



INSET: SCALE: 1"=30'

NUM	RADIUS	ARC	DELTA	CHORD BRG	CHORD
C1	50.00'	42.33'	48°30'11"	N 43°08'54" W	41.07'

IMPERVIOUS SURFACES	
HOUSE	2,550 S.F.
WALK & DRIVE	700 S.F.
PORCH	210 S.F.
DECK (96)	000 S.F.
TOTAL	3,460 S.F.
MAX. IMPERVIOUS	4,000 S.F.

REFERENCES:
 P.B. 2023, PGS 92-94



NOTES

SCALE: 1" = 60'

1. THIS SURVEY SUBJECT TO ANY FACTS THAT MAY BE DISCLOSED BY A FULL AND ACCURATE TITLE SEARCH.
2. THIS MAP MAY NOT BE A CERTIFIED SURVEY AND HAS NOT BEEN REVIEWED BY A LOCAL GOVERNMENT AGENCY FOR COMPLIANCE WITH ANY APPLICABLE LAND DEVELOPMENT REGULATIONS AND HAS NOT BEEN REVIEWED FOR COMPLIANCE WITH RECORDING REQUIREMENTS FOR PLATS.

PLOT PLAN
 PRELIMINARY PLAT- NOT FOR RECORDATION,
 CONVEYANCE OR SALES

REV CODE: 1.FLIP, 2.PLAN, 3.ROTATE, 4.MOVE, 5.SS
 6.SEVERAL OF ABOVE, 7.LAND FEATURE, 8. OTHER

DATE: AUG. 23, 2023

F.B. _____

RWK, PA
ENGINEERING ~ SURVEYING
 CORPORATE LICENSE: C-1771
 101 W. MAIN ST., SUITE 202
 GARNER, NC 27529
 PHONE (919) 779-4854
 FAX (919) 779-4056