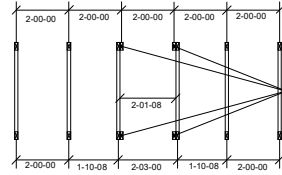


THIS LAYOUT IS INTENDED FOR THE PURPOSE OF TRUSS LOCATION AND PLACEMENT ONLY. REFER TO THE BUILDING PLANS FOR ACTUAL BUILDING CONSTRUCTION.

Truss Connector Total List		
Manuf	Product	Qty
Simpson	HUS26	17
Simpson	THD26-2	1

THE PURPOSE OF THIS DETAIL IS TO ILLUSTRATE HOW TO PROPERLY SPACE 24" O.C. ROOF TRUSSES TO ALLOW FOR A 25 1/2" OPENING FOR PULL DOWN ATTIC ACCESS

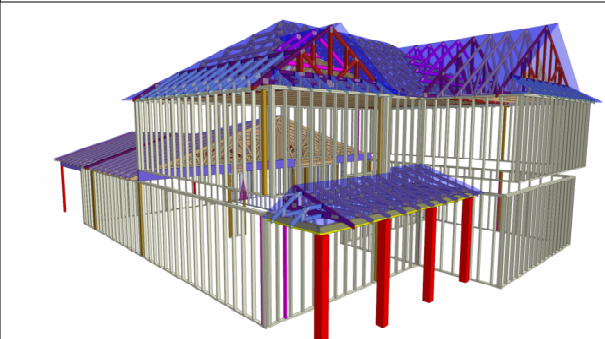
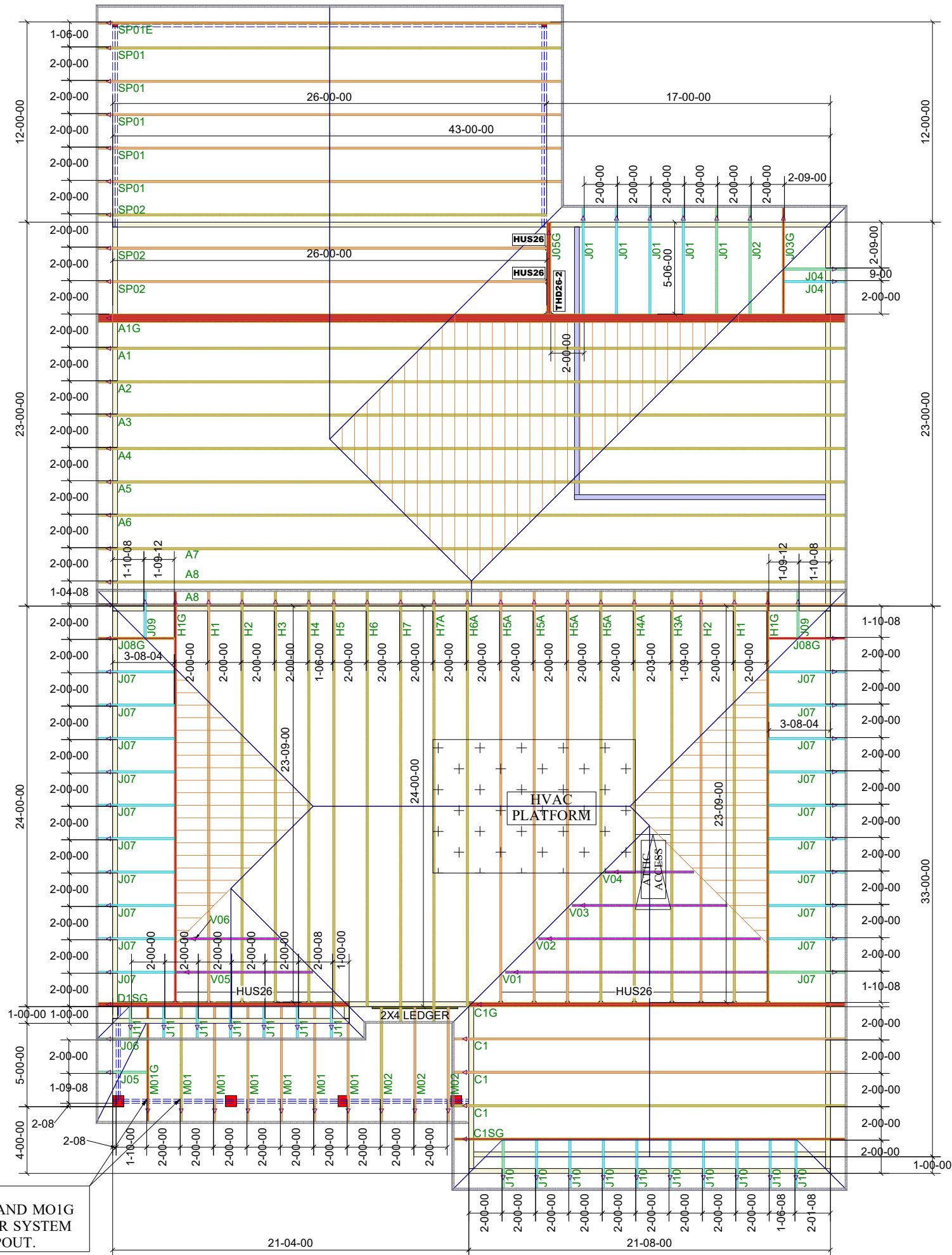
TRUSSES TO BE DESIGNED AT 24" ON CENTER



2x4 NAILER ATTACHED TO ENTIRE TOP CHORD AND BOTTOM CHORD WITH 16d NAILS (1 1/2" X 3") AT 12" ON CENTER. OMIT BOTTOM CHORD NAILERS AT THE ATTIC ACCESS LOCATION ONLY.

TRUSS LAYOUT DIMENSIONS AT PULL DOWN ATTIC ACCESS

FRAMER NOTE:
- TRUSSES M01 AND M01G FORM THE FLOOR SYSTEM ABOVE AT BUMPOUT.



1st Level Roof Area: 0
2nd Level Roof Area: 0



DEDICATED TO QUALITY AND EXCELLENCE
200 EMMETT ROAD
DUNN, NORTH CAROLINA 28334
PHONE: 910-892-8400

PROJECT:	LOT 178 BIRCHWOOD GROVE
CUSTOMER:	KB HOME
MODEL:	243-2939 - ELEVATION D - 12x26 SCREENED COVERED DECK - GR
QUOTE #:	38908
PRINT DATE:	8/10/2023
DRAWN BY:	Mike Bolt
SCALE:	N.T.S

TOP LIVE LOAD:	20
TOP DEAD LOAD:	10
BOTTOM DEAD LOAD:	10
WIND SPEED:	130

GENERAL NOTES:
- DO NOT CUT OR MODIFY TRUSSES
- TRUSSES ARE SPACED 24" ON CENTER UNLESS OTHERWISE NOTED
- REFER TO THE INDIVIDUAL TRUSS DESIGN DRAWINGS FOR THE LOCATION OF LATERAL BRACING AND MULTI-PLY CONNECTION REQUIREMENTS.
- PER ANSI TPI 1-2002 THE TRUSS ENGINEER IS RESPONSIBLE FOR TRUSS TO TRUSS CONNECTIONS AND TRUSS PLY TO PLY CONNECTIONS. THIS TRUSS PLAN RECOMMENDS TRUSS TO BEARING CONNECTIONS AND TRUSS TO BEAM CONNECTIONS WHICH SHALL BE REVIEWED BY THE BUILDING DESIGNER. IT IS THE RESPONSIBILITY OF THE BUILDING DESIGNER TO RESOLVE ALL ROOF FORCES ADEQUATELY TO THE FOUNDATION.