

COMMENTS: _____

LANDSCAPE POSITIONS	GROUP	TEXTURES	.1955 LTAR	CONSISTENCE MOIST	WET
R-RIDGE	I	S-SAND	1.2 - 0.8	VFR-VERY FRIABLE	NS-NON-STICKY
S-SHOULDER SLOPE		LS-LOAMY SAND		FR-FRIABLE	SS-SLIGHTLY STICKY
L-LINEAR SLOPE	II	SL-SANDY LOAM	0.8 - 0.6	FI-FIRM	S-STICKY
FS-FOOT SLOPE		L-LOAM		VFI-VERY FIRM	VS-VERY STICKY
N-NOSE SLOPE	III	SI-SILT	0.6 - 0.3	EFI-EXTREMELY FIRM	NP-NON-PLASTIC
H-HEAD SLOPE		SIL-SILT LOAM		SP-SLIGHTLY STICKY	
CC-CONCLAVE SLOPE		CL-CLAY LOAM		P-PLASTIC	
CV-CONVEX SLOPE		SCL-SANDY CLAY LOAM		VP-VERY PLASTIC	
T-TERRACE	IV	SIC-SILTY CLAY	0.4 - 0.1		
FP-FLOOD PLAN		C-CLAY			
		SC-SANDY CLAY			

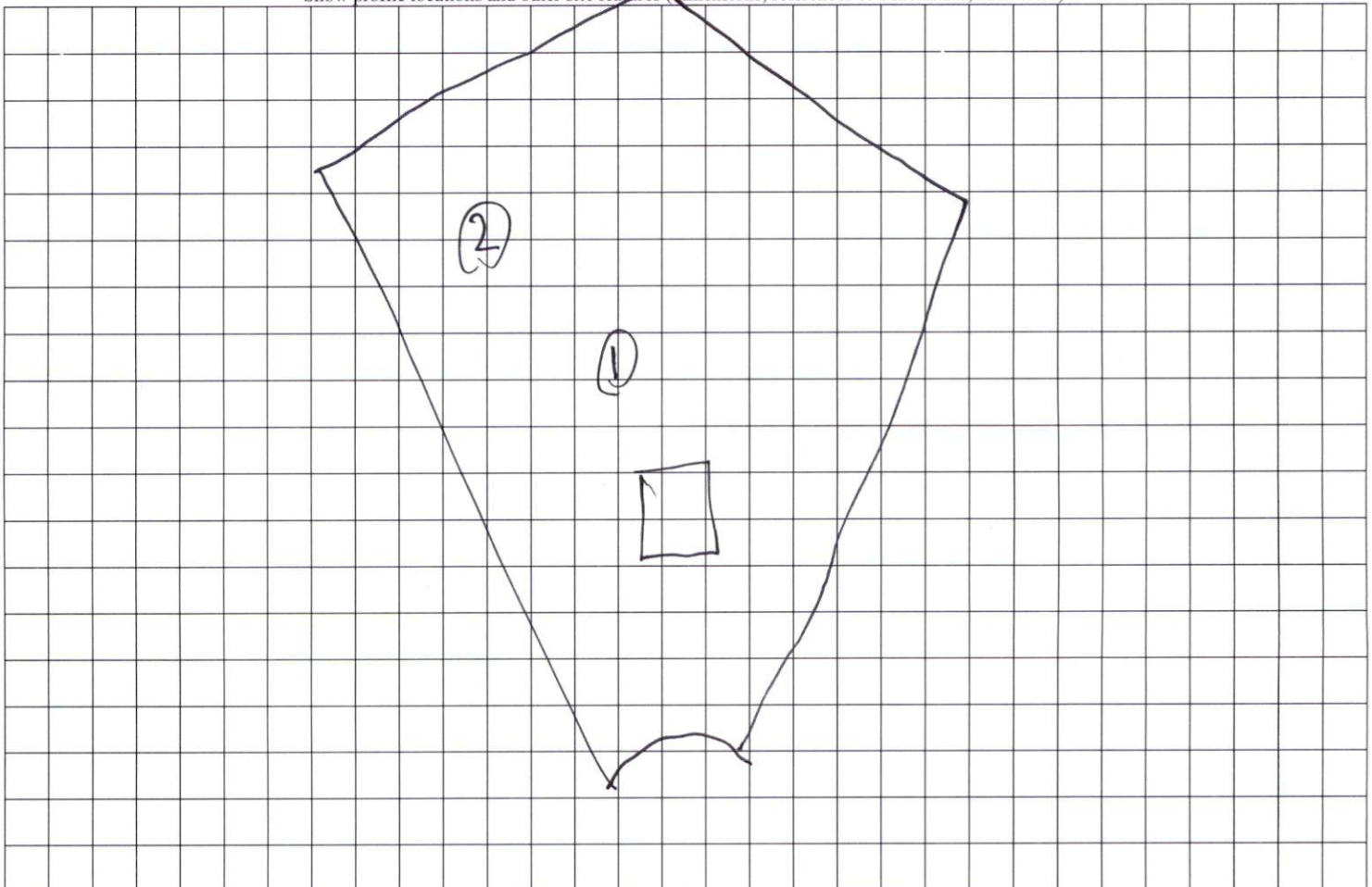
STRUCTURE

- SG-SINGLE GRAIN
- M- MASSIVE
- CR-CRUMB
- GR-GRANULAR
- SBK-SUBANGULAR BLOCKY
- ABK-ANGULAR BLOCKY
- PL-PLATY
- PR-PRISMATIC

MINERALOGY

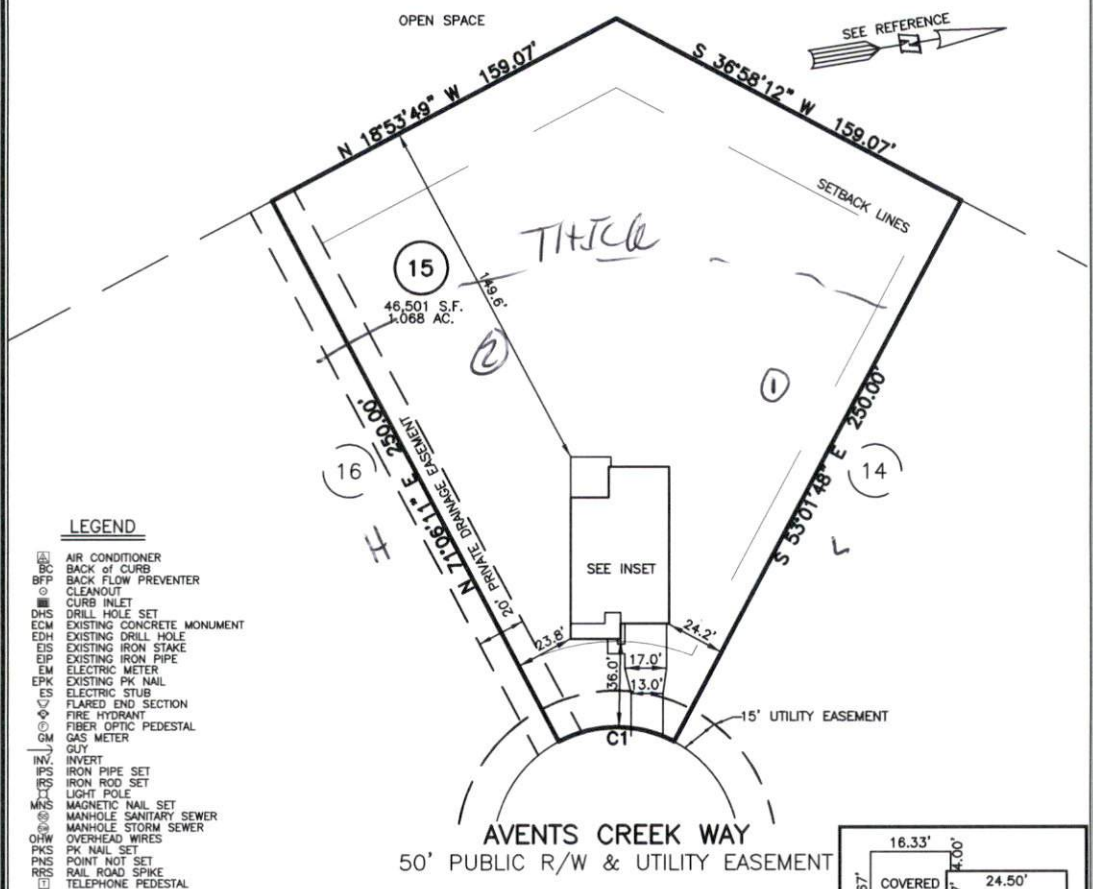
- SLIGHTLY EXPANSIVE
- EXPANSIVE

Show profile locations and other site features (dimensions, references or benchmark, and North)



PLOT PLAN FOR
NEW HOME INC., LLC
 58 AVENTS CREEK WAY
 LOT 15, WOODBRIDGE SOUTH
 BUCKHORN TOWNSHIP, HARNETT COUNTY, NORTH CAROLINA

3-52
 1, L 0-8 SL
 8-435 Clay
 2L 3-52



LEGEND

- ⊠ AIR CONDITIONER
- BC BACK OF CURB
- BFP BACK FLOW PREVENTER
- CLEANOUT
- CURB INLET
- DHS DRILL HOLE SET
- ECM EXISTING CONCRETE MONUMENT
- EDH EXISTING DRILL HOLE
- EIS EXISTING IRON STAKE
- EIP EXISTING IRON PIPE
- EM ELECTRIC METER
- EPK EXISTING PK NAIL
- ES ELECTRIC STUB
- FLARED END SECTION
- FIRE HYDRANT
- FIBER OPTIC PEDESTAL
- GM GAS METER
- GUY
- INV. INVERT
- IPS IRON PIPE SET
- IRS IRON ROD SET
- LIGHT POLE
- MNS MAGNETIC NAIL SET
- MANHOLE SANITARY SEWER
- MANHOLE STORM SEWER
- OHW OVERHEAD WIRES
- PNS PK NAIL SET
- PNS POINT NOT SET
- RRS RAIL ROAD SPIKE
- TELEPHONE PEDESTAL
- TRANSFORMER
- CABLE TV PEDESTAL
- UTILITY POLE
- WATER METER
- WATER VALVE
- YARD INLET
- () FIELD MEASUREMENT

NUM	RADIUS	ARC	DELTA	CHORD BRG	CHORD
C1	50.00'	48.75'	55°52'01"	S 09°02'12" W	46.84'

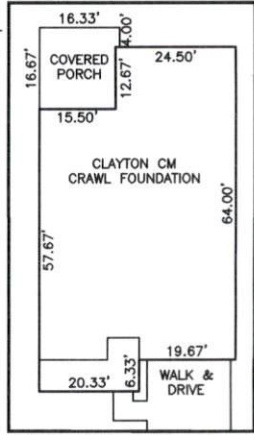
IMPERVIOUS SURFACES	
HOUSE	2,500 S.F.
WALK & DRIVE	710 S.F.
PORCH	270 S.F.
TOTAL	3,480 S.F.
MAX. IMPERVIOUS	4,000 S.F.

SETBACK INFO

- FRONT: 35'
- REAR: 25'
- SIDES: 10'
- CORNER SIDE: 20'

REFERENCES:

P.B. 2023, PGS 92-94



INSET: SCALE: 1"=30'



NOTES

1. THIS SURVEY SUBJECT TO ANY FACTS THAT MAY BE DISCLOSED BY A FULL AND ACCURATE TITLE SEARCH.
2. THIS MAP MAY NOT BE A CERTIFIED SURVEY AND HAS NOT BEEN REVIEWED BY A LOCAL GOVERNMENT AGENCY FOR COMPLIANCE WITH ANY APPLICABLE LAND DEVELOPMENT REGULATIONS AND HAS NOT BEEN REVIEWED FOR COMPLIANCE WITH RECORDING REQUIREMENTS FOR PLATS.

PLOT PLAN
 PRELIMINARY PLAT- NOT FOR RECORDATION,
 CONVEYANCE OR SALES

DATE: AUG. 11, 2023

RWK, PA
ENGINEERING ~ SURVEYING
 CORPORATE LICENSE: C-1771
 101 W. MAIN ST., SUITE 202
 GARNER, NC 27529
 PHONE (919) 779-4854
 FAX (919) 779-4056

REV CODE: 1.FLIP, 2.PLAN, 3.ROTATE, 4.MOVE, 5.SS
 6.SEVERAL OF ABOVE, 7.LAND FEATURE, 8. OTHER